



**THE SCHOOL BOARD OF BROWARD COUNTY, FLORIDA**

**2018-2019 ORGANIZATIONAL CHART**

Board Approved: 05/22/18



# THE SCHOOL BOARD OF BROWARD COUNTY, FLORIDA

## 2018-2019 ORGANIZATIONAL CHART

<b>School Board Appointed Committees &amp; Public Stakeholders</b> .....	<b>1</b>
<b>Superintendent of Schools/General Counsel</b> .....	<b>2</b>
<b>Chief School Performance &amp; Accountability Officer</b> .....	<b>3</b>
<b>Chief Academic Officer</b> .....	<b>4-7</b>
<b>Early Learning &amp; Language Acquisition</b> .....	<b>4</b>
<b>Exceptional Student Learning Support</b> .....	<b>5</b>
<b>Instruction &amp; Interventions</b> .....	<b>6-7</b>
<b>Chief Student Support Initiatives</b> .....	<b>8</b>
<b>Chief Auditor</b> .....	<b>9</b>
<b>Chief Facilities Officer</b> .....	<b>10</b>
<b>Chief Financial Officer</b> .....	<b>11</b>
<b>Chief Human Resources &amp; Equity Officer</b> .....	<b>12</b>
<b>Chief Information Officer</b> .....	<b>13</b>
<b>Chief Portfolio Services Officer</b> .....	<b>14</b>
<b>Chief Public Information Officer</b> .....	<b>15</b>
<b>Chief of Staff</b> .....	<b>16</b>
<b>Chief Strategy &amp; Operations Officer</b> .....	<b>17-18</b>
<b>Business Support Center, Grants Administration, Strategic Implementation &amp; Accountability</b> .....	<b>17</b>
<b>Food &amp; Nutrition Services, Procurement &amp; Warehousing Services, Student Transportation &amp; Fleet Services</b> .....	<b>18</b>



**SCHOOL BOARD APPOINTED COMMITTEES & PUBLIC STAKEHOLDERS**

**THE SCHOOL BOARD OF BROWARD COUNTY, FL  
2018-2019 ORGANIZATIONAL CHART**

**Legend**

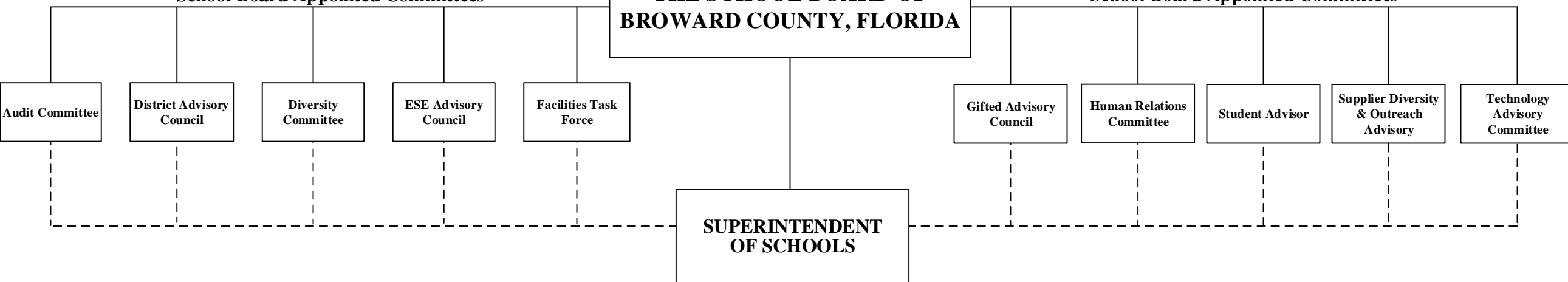
Funding from sources other than General Funds	New Position Job Description Exists <b>N</b>	Reporting Change from Different Division <b>R</b>
New Position Job Description Does Not Exist <b>N</b> ✓	Job Study on Existing Position <b>J</b>	Alignment Change within same Division <b>A</b>
Revision to Existing Job Description/Title Change ✓	Funding:	
	<b>C</b> Capital	<b>FS</b> Food Service
	<b>G</b> General	<b>Gr</b> Grant
	<u>Direct Report</u>	<u>Indirect Report</u>

**BROWARD COUNTY  
COMMUNITY**

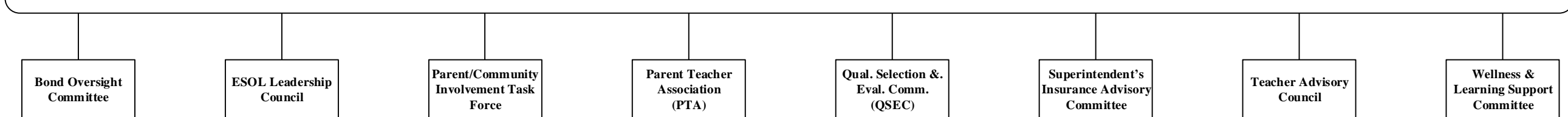
**THE SCHOOL BOARD OF  
BROWARD COUNTY, FLORIDA**

**School Board Appointed Committees**

**School Board Appointed Committees**



**PUBLIC STAKEHOLDERS**



**SUPERINTENDENT/GENERAL COUNSEL**



**THE SCHOOL BOARD OF BROWARD COUNTY, FL  
2018-2019 ORGANIZATIONAL CHART**

Funding from sources other than General Funds

**C** Capital    **FS** Food Service  
**G** General    **Gr** Grant

**BROWARD COUNTY  
COMMUNITY**

**THE SCHOOL BOARD OF  
BROWARD COUNTY, FLORIDA**

**GENERAL COUNSEL**

**SUPERINTENDENT  
OF SCHOOLS**

**Collective Bargaining Team**

**DEPUTY  
GENERAL COUNSEL**  
(2)

**ASSISTANT  
GENERAL COUNSEL**  
(4)

**ASSISTANT  
GENERAL COUNSEL**

**ADMINISTRATIVE  
COUNSEL**

**Recovery Team**

**CHIEF OF STAFF** (S)  
Page 16

**CHIEF  
Special Investigative Unit  
(SIU)** (D)  
Page 16

**DIRECTOR  
Legislative Affairs** (D)

**COORDINATOR** (27)  
Governmental Affairs

**CHIEF SCHOOL  
PERFORMANCE &  
ACCOUNTABILITY  
OFFICER**  
Page 3

**CHIEF ACADEMIC  
OFFICER**  
Pages 4-7

**CHIEF  
STUDENT SUPPORT  
INITIATIVES**  
Page 8

**CHIEF AUDITOR**  
Page 9

**CHIEF FACILITIES  
OFFICER**  
Page 10

**CHIEF FINANCIAL  
OFFICER**  
Page 11

**CHIEF HUMAN  
RESOURCES &  
EQUITY OFFICER**  
Page 12

**CHIEF  
INFORMATION  
OFFICER**  
Page 13

**CHIEF PORTFOLIO  
SERVICES OFFICER**  
Page 14

**CHIEF  
PUBLIC  
INFORMATION  
OFFICER**  
Page 15

**CHIEF STRATEGY &  
OPERATIONS  
OFFICER**  
Pages 17-18

Funding from sources other than General Funds

**C** Capital    **FS** Food Service  
**G** General    **Gr** Grant



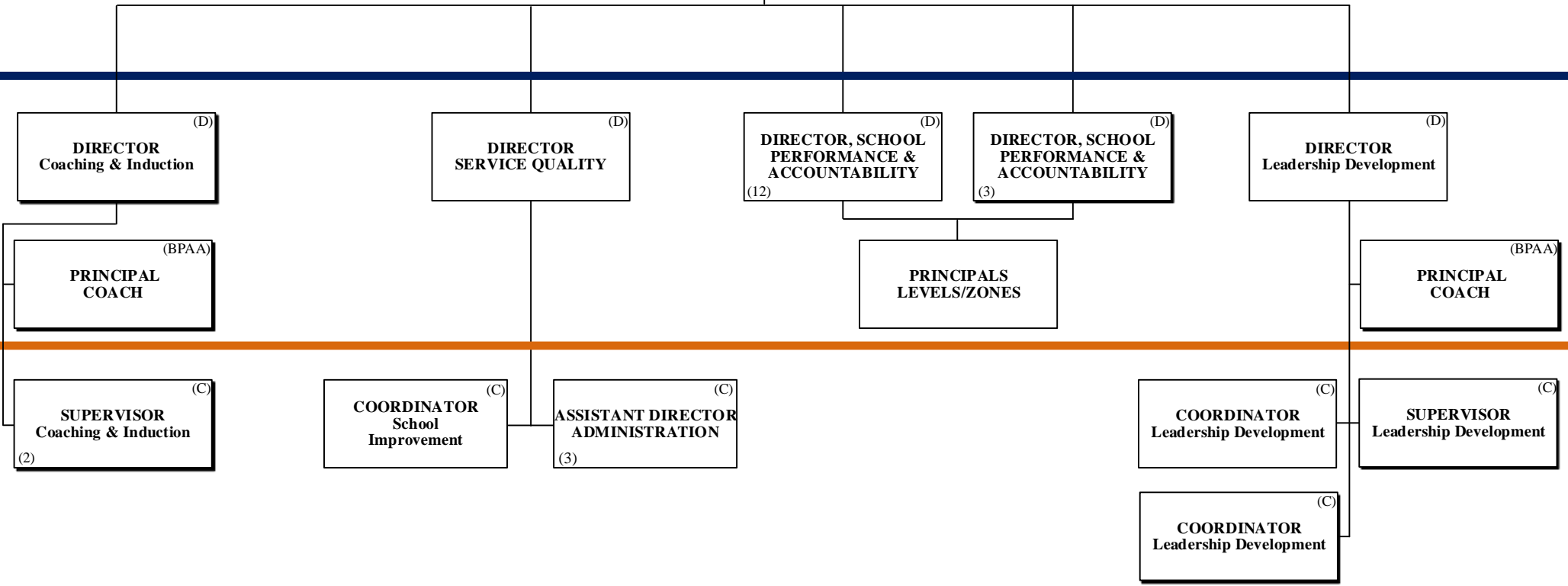
# SCHOOL PERFORMANCE & ACCOUNTABILITY OSPA

THE SCHOOL BOARD OF BROWARD COUNTY, FL  
2018-2019 ORGANIZATIONAL CHART

THE SCHOOL BOARD OF BROWARD COUNTY, FLORIDA

SUPERINTENDENT OF SCHOOLS

CHIEF SCHOOL PERFORMANCE & ACCOUNTABILITY OFFICER (S)



PAY BANDS 'S' & 'E'

PAY BAND 'D'

PAY BANDS 'C' & 'B'

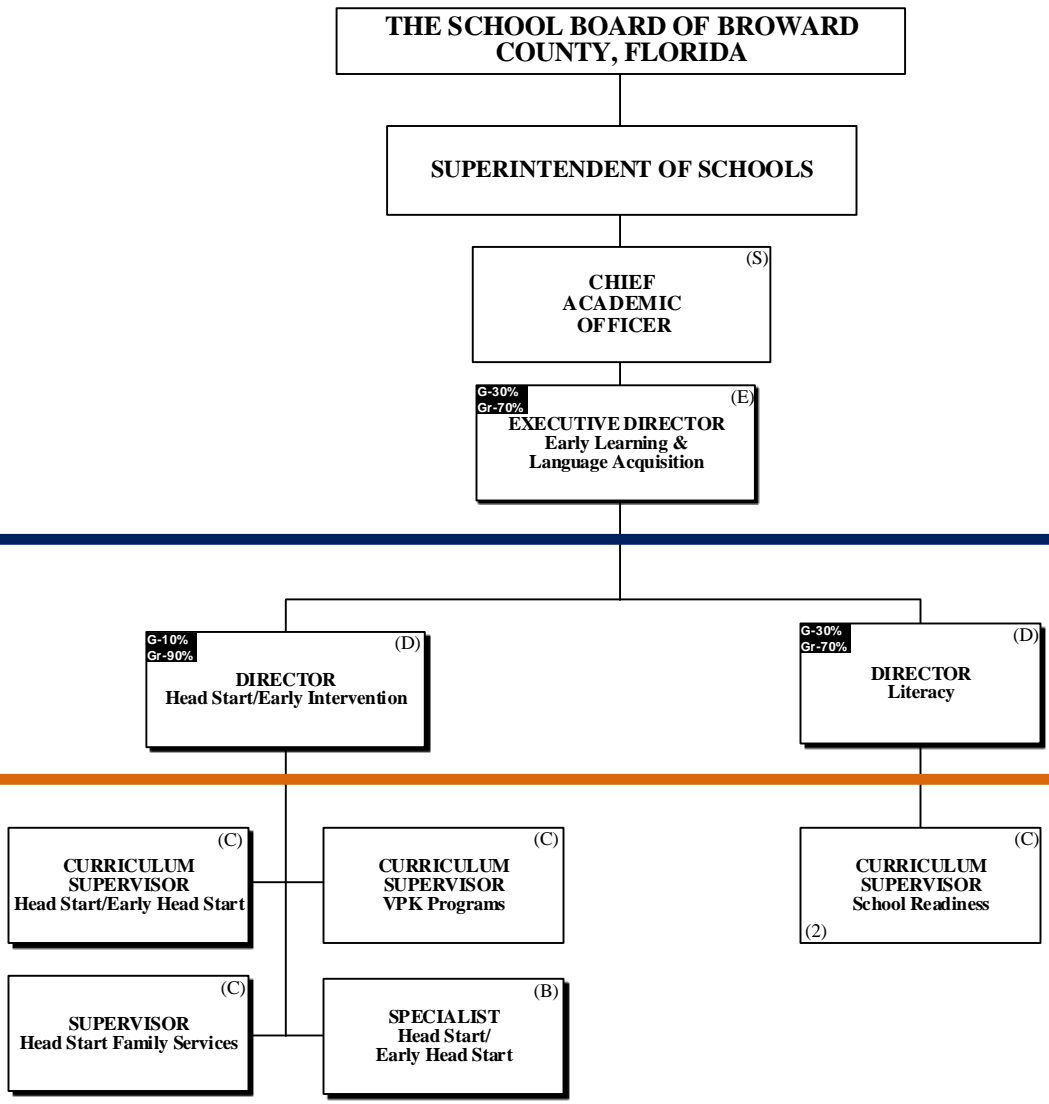
Funding from sources other than General Funds

**C** Capital    **FS** Food Service  
**G** General    **Gr** Grant

# ACADEMICS EARLY LEARNING & LANGUAGE ACQUISITION



**THE SCHOOL BOARD OF BROWARD COUNTY, FL  
 2018-2019 ORGANIZATIONAL CHART**



PAY BANDS 'S' & 'E'

PAY BAND 'D'

PAY BANDS 'C' & 'B'

# ACADEMICS EXCEPTIONAL STUDENT LEARNING SUPPORT



**THE SCHOOL BOARD OF BROWARD COUNTY, FL  
2018-2019 ORGANIZATIONAL CHART**

Funding from sources other than General Funds

**C** Capital    **FS** Food Service  
**G** General    **Gr** Grant

**THE SCHOOL BOARD OF BROWARD COUNTY, FLORIDA**

**SUPERINTENDENT OF SCHOOLS**

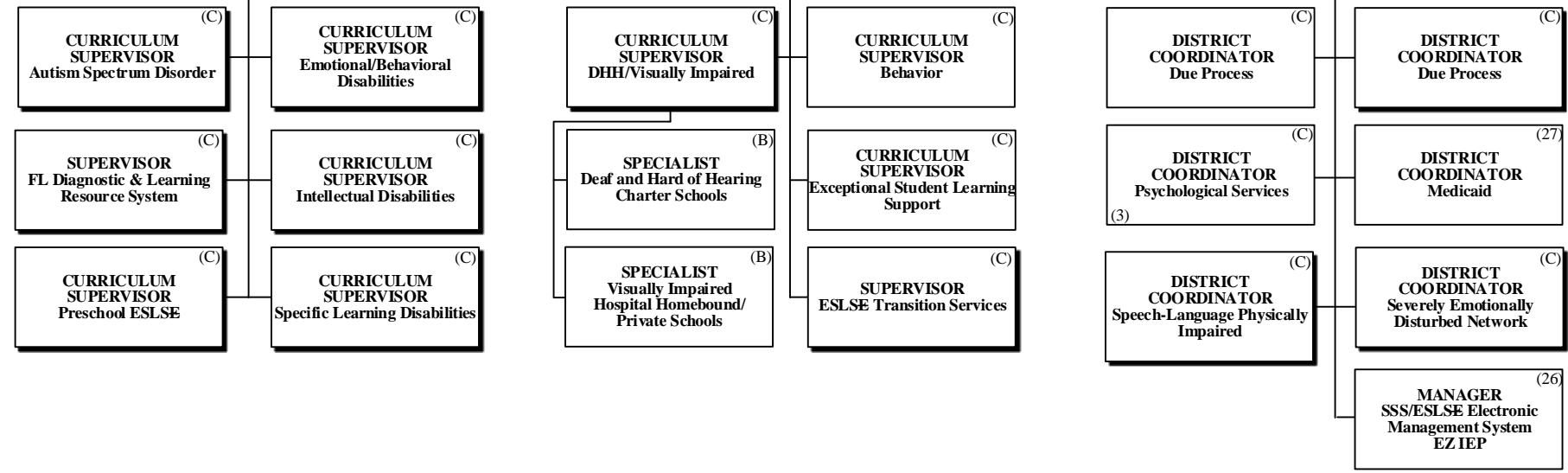
**CHIEF ACADEMIC OFFICER** <sup>(S)</sup>

**EXECUTIVE DIRECTOR**  
Exceptional Student Learning Support <sup>(E)</sup>

PAY BANDS 'S' & 'E'

**DIRECTOR** <sup>(D)</sup> Exceptional Student Learning Support (Pre-K/Elementary)   
 **DIRECTOR** <sup>(D)</sup> Exceptional Student Learning Support (Secondary)   
 **DIRECTOR** <sup>(D)</sup> Exceptional Student Learning Support Services

PAY BAND 'D'



PAY BANDS 'C' & 'B'

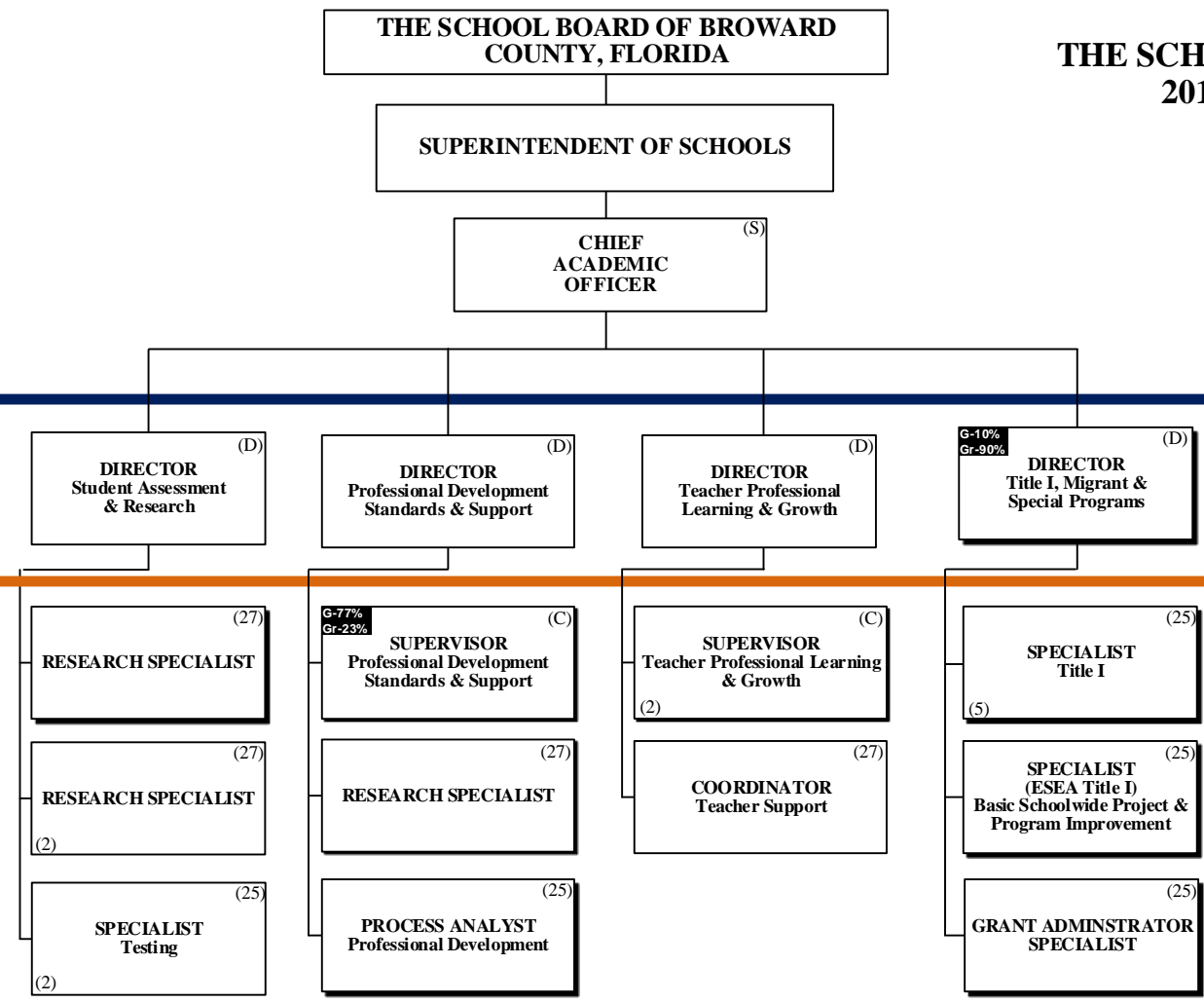
Funding from sources other than General Funds

**C** Capital    **FS** Food Service  
**G** General    **Gr** Grant

# ACADEMICS INSTRUCTION & INTERVENTIONS



## THE SCHOOL BOARD OF BROWARD COUNTY, FL 2018-2019 ORGANIZATIONAL CHART



PAY BANDS 'S' & 'E'

PAY BAND 'D'

PAY BANDS 'C' & 'B'



Funding from sources other than General Funds

- C** Capital    **FS** Food Service
- G** General    **Gr** Grant

# ACADEMICS INSTRUCTION & INTERVENTIONS

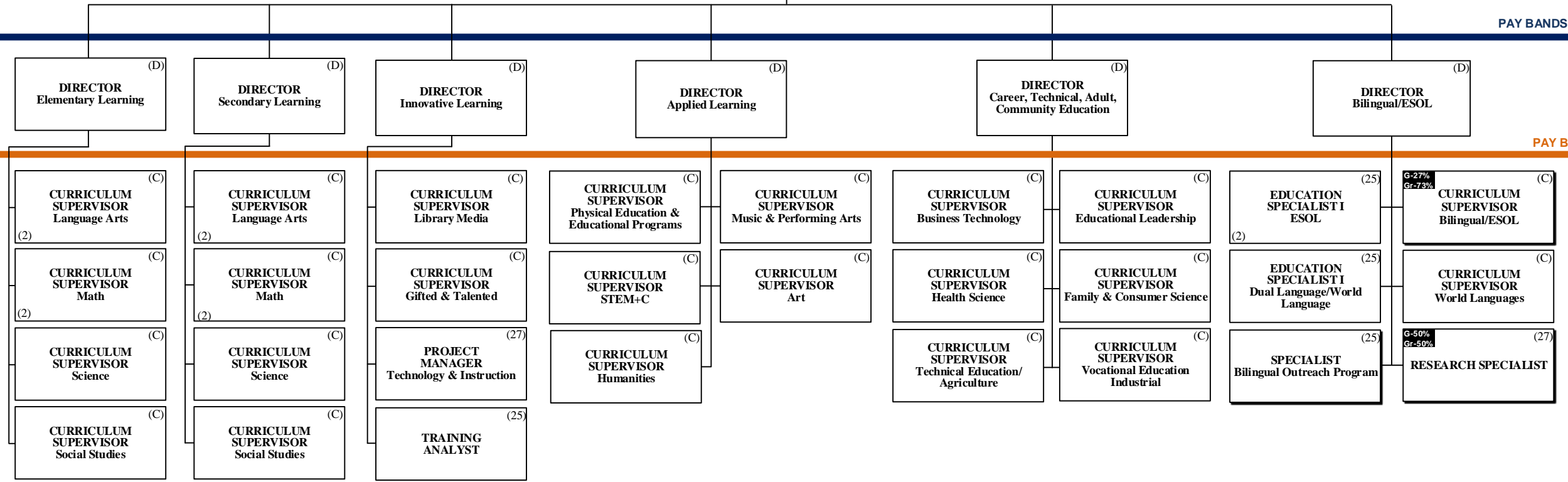


## THE SCHOOL BOARD OF BROWARD COUNTY, FL 2018-2019 ORGANIZATIONAL CHART

THE SCHOOL BOARD OF BROWARD COUNTY, FLORIDA

SUPERINTENDENT OF SCHOOLS

CHIEF ACADEMIC OFFICER (S)



PAY BANDS 'S' & 'E'

PAY BAND 'D'

PAY BANDS 'C' & 'B'

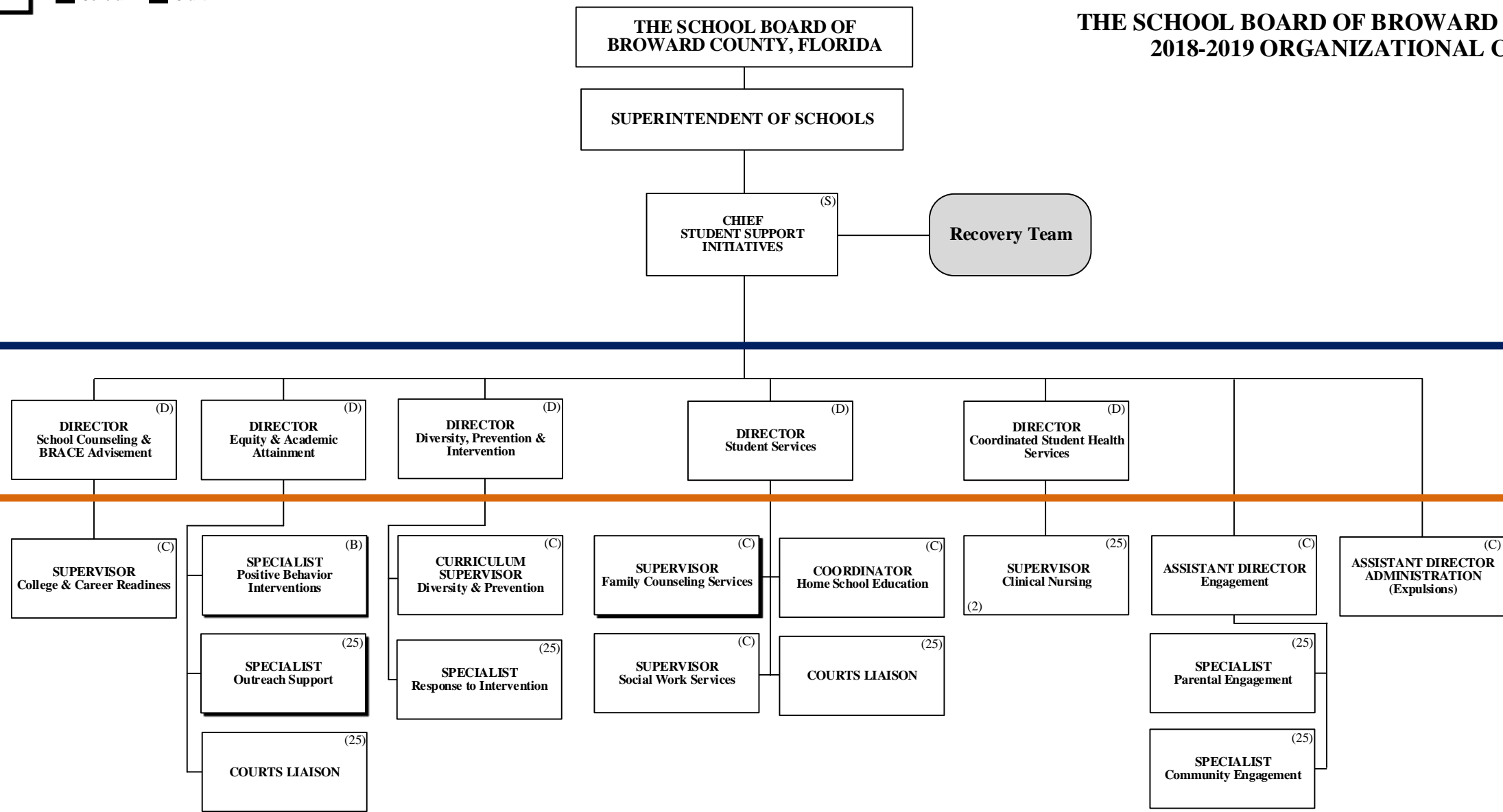


# STUDENT SUPPORT INITIATIVES

THE SCHOOL BOARD OF BROWARD COUNTY, FL  
2018-2019 ORGANIZATIONAL CHART

Funding from sources other than General Funds

- C** Capital    **FS** Food Service
- G** General    **Gr** Grant



PAY BANDS 'S' & 'E'

PAY BAND 'D'

PAY BANDS 'C' & 'E'

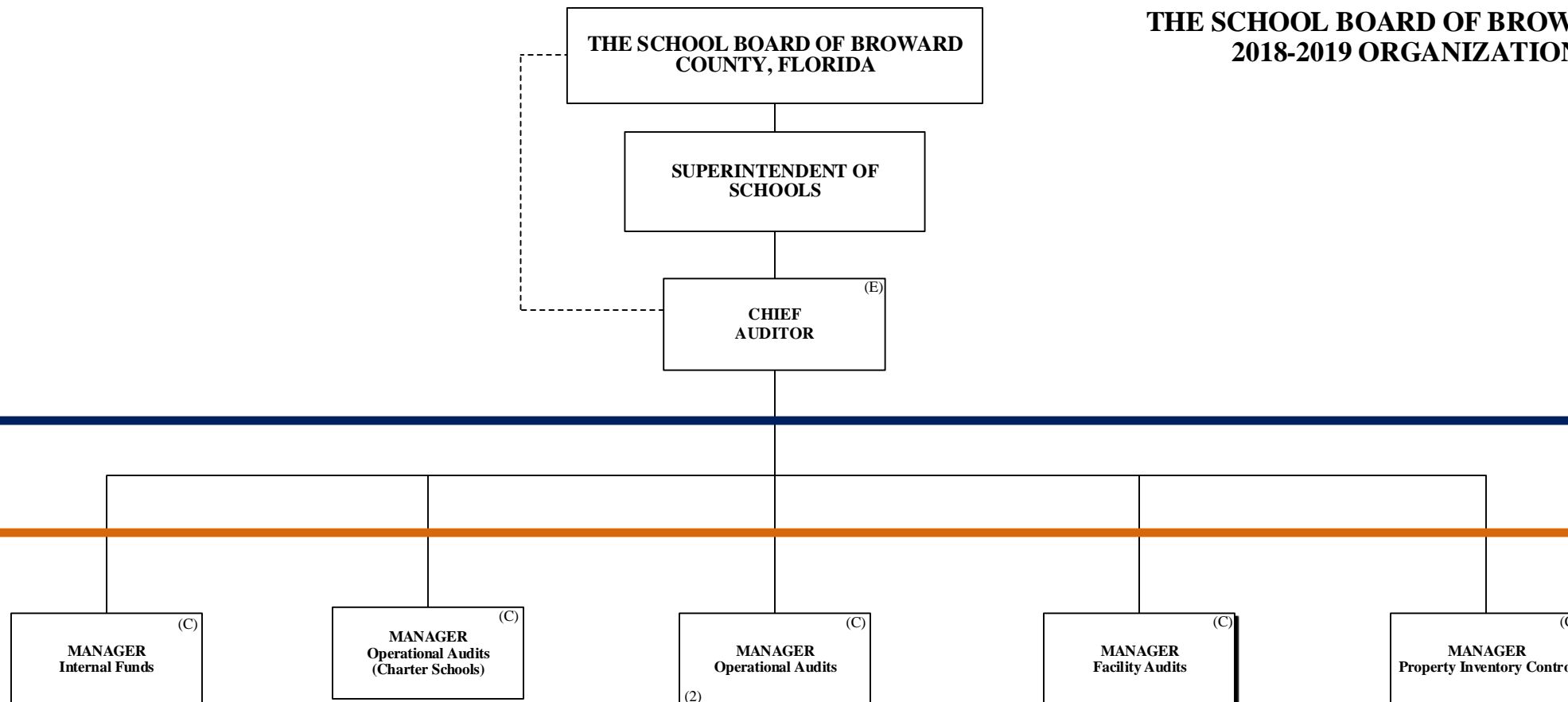


**THE SCHOOL BOARD OF BROWARD COUNTY, FL  
2018-2019 ORGANIZATIONAL CHART**

Funding from sources other than General Funds

- C** Capital    **FS** Food Service
- G** General    **Gr** Grant

**AUDITOR**



PAY BANDS 'S' & 'E'

PAY BAND 'D'

PAY BANDS 'C' & 'B'

# FACILITIES



Funding from sources other than General Funds

**C** Capital    **FS** Food Service  
**G** General    **Gr** Grant

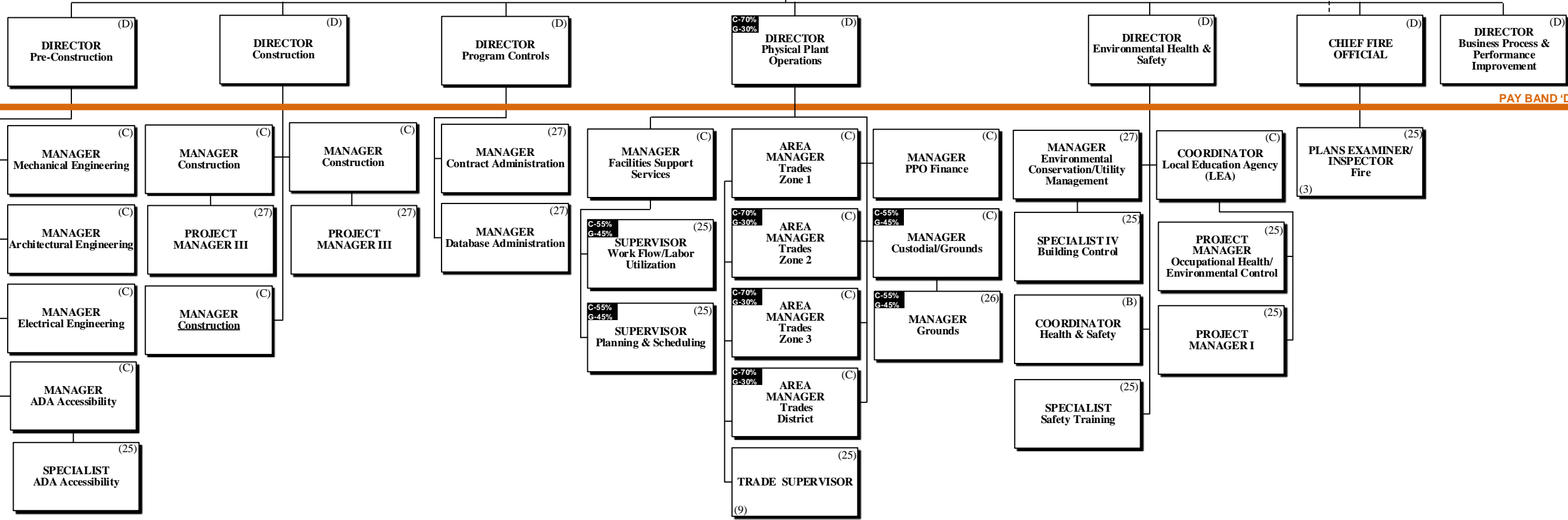
THE SCHOOL BOARD OF BROWARD COUNTY, FLORIDA

## THE SCHOOL BOARD OF BROWARD COUNTY, FL 2018-2019 ORGANIZATIONAL CHART

SUPERINTENDENT OF SCHOOLS

CHIEF FACILITIES OFFICER (S)

PAY BANDS 'S' & 'E'



PAY BAND 'D'

ESMAB PAY BANDS 'C' & 'B'  
TSP PAY GRADES 25-28

Funding from sources other than General Funds

**C** Capital    **FS** Food Service  
**G** General    **Gr** Grant

# FINANCIAL MANAGEMENT

THE SCHOOL BOARD OF BROWARD COUNTY, FLORIDA

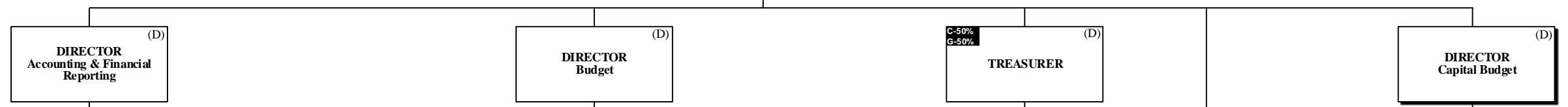


## THE SCHOOL BOARD OF BROWARD COUNTY, FL 2018-2019 ORGANIZATIONAL CHART

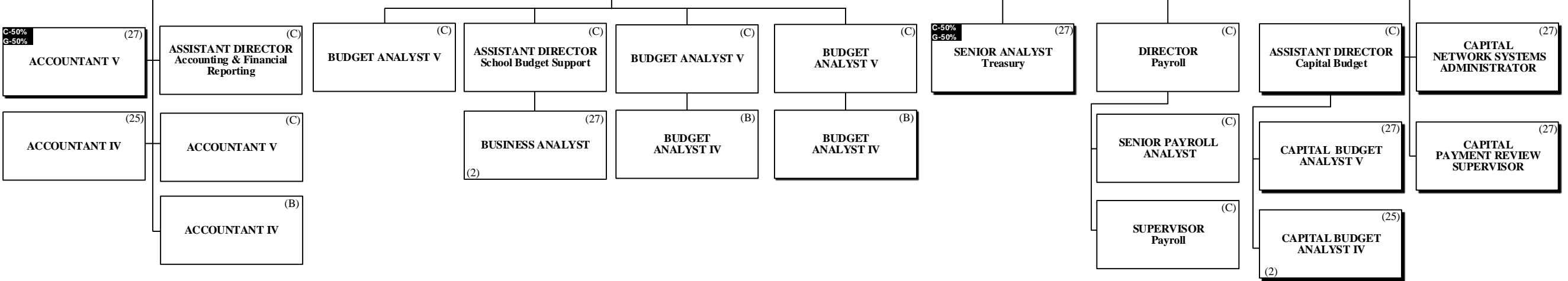
SUPERINTENDENT OF SCHOOLS

**C-20%**  
**G-80%**    (S)  
CHIEF FINANCIAL OFFICER (CFO)

PAY BANDS 'S' & 'E'



PAY BAND 'D'



ESMAB PAY BANDS 'C' & 'B'  
TSP PAY GRADES 25-28

# HUMAN RESOURCES & EQUITY

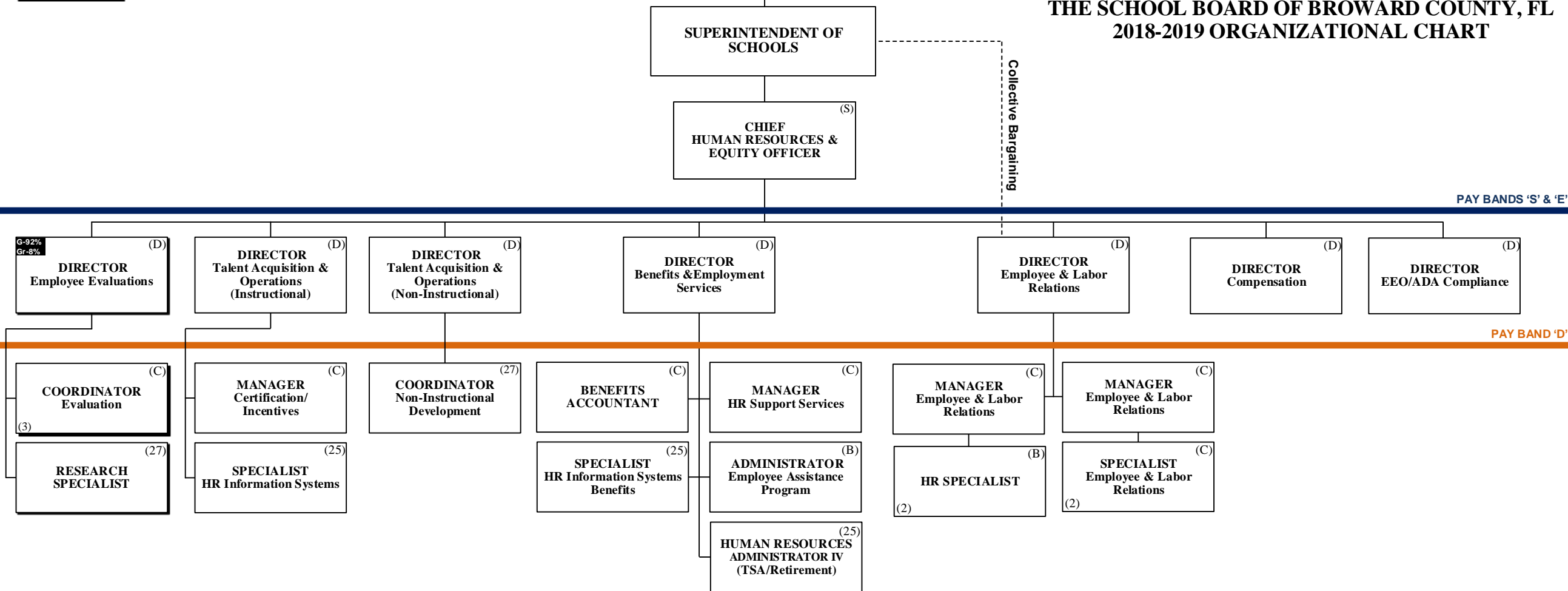
THE SCHOOL BOARD OF BROWARD COUNTY, FLORIDA



THE SCHOOL BOARD OF BROWARD COUNTY, FL  
2018-2019 ORGANIZATIONAL CHART

Funding from sources other than General Funds

**C** Capital    **FS** Food Service  
**G** General    **Gr** Grant



PAY BANDS 'S' & 'E'

PAY BAND 'D'

ESMAB PAY BANDS 'C' & 'B'  
TSP/PBA PAY GRADES 25-28

Funding from sources other than General Funds

**C** Capital    **FS** Food Service  
**G** General    **Gr** Grant

# INFORMATION & TECHNOLOGY



## THE SCHOOL BOARD OF BROWARD COUNTY, FL 2018-2019 ORGANIZATIONAL CHART

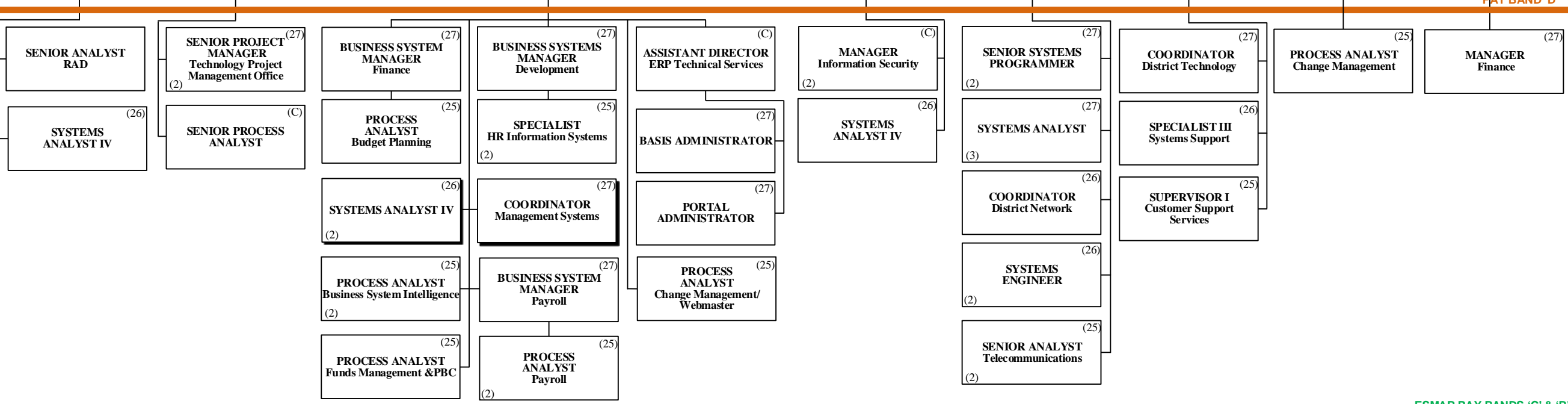
THE SCHOOL BOARD OF BROWARD COUNTY, FLORIDA

SUPERINTENDENT OF SCHOOLS

CHIEF INFORMATION OFFICER (S)

PAY BANDS 'S' & 'E'

DIRECTOR School Applications (D)    DIRECTOR Technology Planning & Policy (D)    DIRECTOR Business Applications (D)    DIRECTOR Information Technology Security (D)    DIRECTOR Technical Support Services (D)    DIRECTOR Network Integration (D)    DIRECTOR Computer Operations (D)



PAY BAND 'D'

ESMAB PAY BANDS 'C' & 'B'  
TSP PAY GRADES 25-28

Funding from sources other than General Funds

**C** Capital    **FS** Food Service  
**G** General    **Gr** Grant



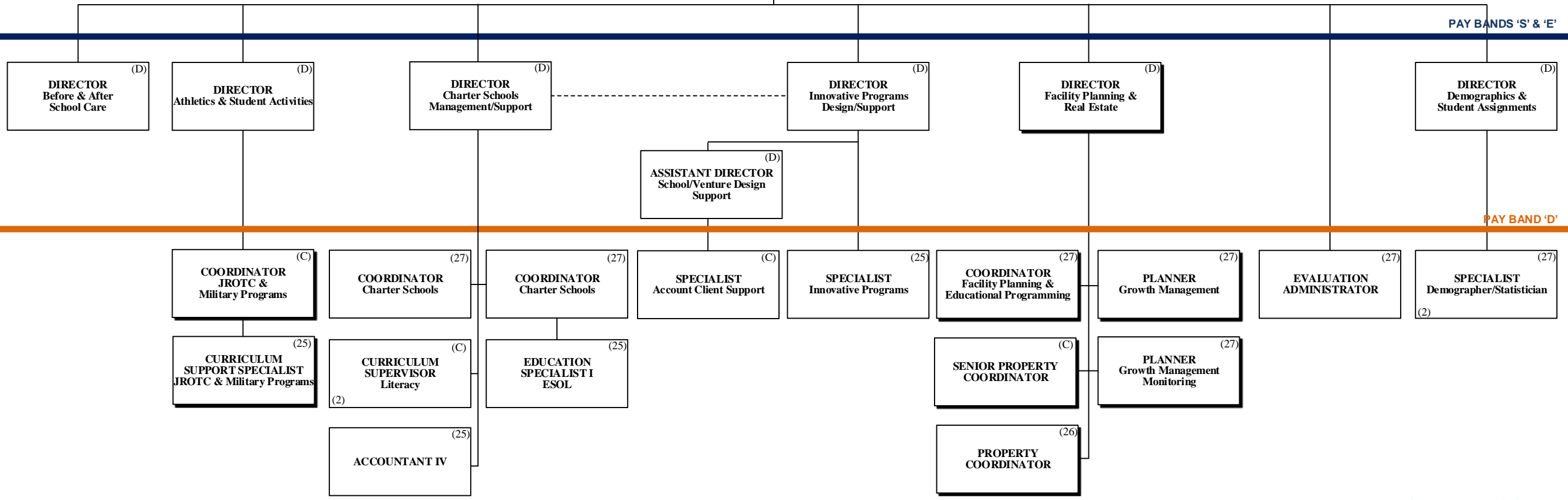
# PORTFOLIO SERVICES

## THE SCHOOL BOARD OF BROWARD COUNTY, FL 2018-2019 ORGANIZATIONAL CHART

THE SCHOOL BOARD OF BROWARD COUNTY, FLORIDA

SUPERINTENDENT OF SCHOOLS

CHIEF PORTFOLIO SERVICES OFFICER (E)



PAY BANDS 'S' & 'E'

PAY BAND 'D'

ESMAB PAY BANDS 'C' & 'B'  
TSP PAY GRADES 25-28





Funding from sources other than General Funds

- C** Capital    **FS** Food Service
- G** General    **Gr** Grant

# PUBLIC INFORMATION

## THE SCHOOL BOARD OF BROWARD COUNTY, FL 2018-2019 ORGANIZATIONAL CHART

THE SCHOOL BOARD OF BROWARD COUNTY, FLORIDA

SUPERINTENDENT OF SCHOOLS

CHIEF PUBLIC INFORMATION OFFICER (E)

DIRECTOR/ GENERAL MANAGER Broward Educational Communication Network (BECON) (D)

DIRECTOR Marketing & Strategic Communications (D)

DIRECTOR Mass Media & Community Relations (D)

BECON STATION MANAGER (28)

MANAGER II Engineering (26)

MANAGER of GRAPHICS (26)

COORDINATOR District Community Relations (27)

COORDINATOR BECON Public Relations & Fundraising (26)

MANAGER II Production (26)

SPECIALIST Communications (25)  
(2)

SPECIALIST Mass Media (25)  
(2)

MANAGER II School Services (B)

PAY BANDS 'S' & 'E'

**Crisis and Recovery Communications**

**Purpose:** To enhance the District's capacity to respond in a timely and accurate manner to the unprecedented number of public records requests, media requests and subpoenas related to the tragedy at Marjory Stoneman Douglas High School. In addition, the current situation requires increased communications effort throughout the entire District.

**Resources:** Crisis Communications Experts and Consultants, Public Information Office, Legislative Affairs Department, Council of Great City Schools (Communications staff on loan from other districts)

PAY BAND 'D'

ESMAB PAY BANDS 'C' & 'B'  
TSP PAY GRADES 25-28

# CHIEF OF STAFF



THE SCHOOL BOARD OF BROWARD COUNTY, FLORIDA

THE SCHOOL BOARD OF BROWARD COUNTY, FL  
2018-2019 ORGANIZATIONAL CHART

Funding from sources other than General Funds

**C** Capital    **FS** Food Service  
**G** General    **Gr** Grant

SUPERINTENDENT OF SCHOOLS

CHIEF OF STAFF (S)

PAY BANDS 'S' & 'E'

DIRECTOR (D)  
District Administrative Services

CHIEF BUILDING OFFICIAL (D)

DIRECTOR (D)  
Risk Management

CHIEF (D)  
Special Investigative Unit (SIU)

MAJOR (D)  
SIU Operations/  
Investigations

PAY BAND 'D'

ASSISTANT CHIEF BUILDING OFFICIAL (27)  
Inspections

SENIOR ENGINEER (27)

ASSISTANT CHIEF BUILDING OFFICIAL (27)  
Plans

MANAGER (B)  
Emergency Management

PROGRAM ADMINISTRATOR (C)  
Workers Compensation

PERSONNEL ADMINISTRATOR (C)  
Professional Standards

DETECTIVE (25)  
SIU (Schools - 11)  
(Personnel - 9)  
(20)

SCHOOL SAFETY COORDINATOR (25)

Revisions to the SIU organization will be forthcoming pending the current active assessment effort regarding district safety and security needs.

PLANS EXAMINER/INSPECTOR (25)  
Building (4)

PLANS EXAMINER/INSPECTOR (25)  
Plumbing (2)

SENIOR PLANS EXAMINER (26)

MANAGER (C)  
Workers Compensation Claims

MANAGER (C)  
Workers Compensation Medical Consumerism

MANAGER (B)  
Workers Compensation Information Analytics

PLANS EXAMINER/INSPECTOR (25)  
Mechanical (2)

PLANS EXAMINER/INSPECTOR (25)  
Electrical (2)

SENIOR PLANS EXAMINER (26)  
Structural

SUPERVISOR (B)  
Workers Compensation Claims

SUPERVISOR (B)  
Workers Compensation Medical Case Management

SPECIALIST (B)  
Workers Compensation Stay-at-Work/Return-to-Work

PLANS EXAMINER/INSPECTOR (25)  
Roofing (2)

ADJUSTER (B)  
Workers Compensation Claims (8)

CASE MANAGER (B)  
Workers Compensation Medical Case (8)

ESMAB PAY BANDS 'C' & 'B'  
TSP PAY GRADES 25-28

# STRATEGY & OPERATIONS

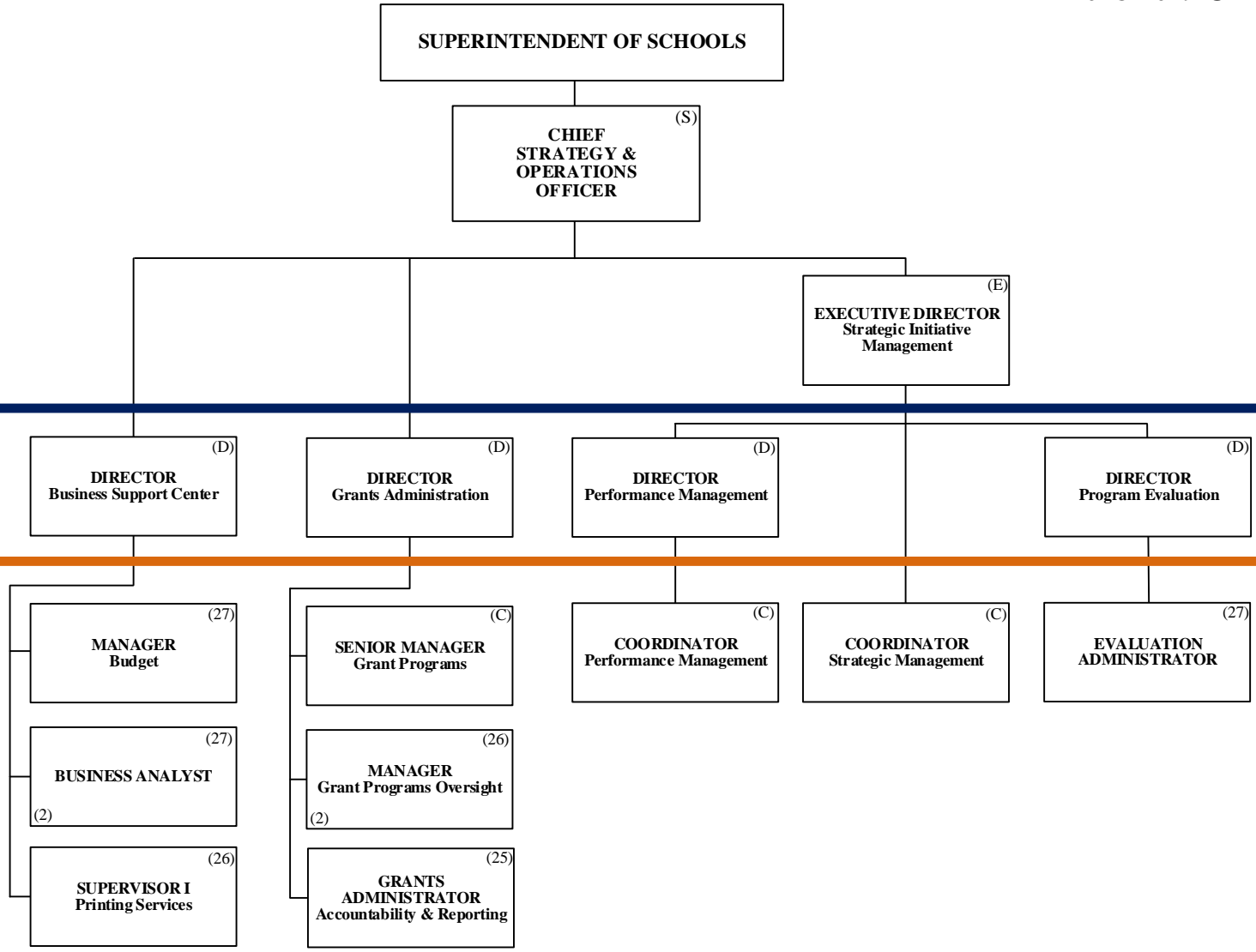


Funding from sources other than General Funds

- C** Capital    **FS** Food Service
- G** General    **Gr** Grant

THE SCHOOL BOARD OF BROWARD COUNTY, FLORIDA

THE SCHOOL BOARD OF BROWARD COUNTY, FL  
2018-2019 ORGANIZATIONAL CHART



PAY BANDS 'S' & 'E'

PAY BAND 'D'

ESMAB PAY BANDS 'C' & 'B'  
TSP PAY GRADES 25-28



Funding from sources other than General Funds

**C** Capital    **FS** Food Service  
**G** General    **Gr** Grant

# STRATEGY & OPERATIONS

THE SCHOOL BOARD OF BROWARD COUNTY, FLORIDA

## THE SCHOOL BOARD OF BROWARD COUNTY, FL 2018-2019 ORGANIZATIONAL CHART

SUPERINTENDENT OF SCHOOLS

CHIEF STRATEGY & OPERATIONS OFFICER (S)

EXECUTIVE DIRECTOR Student Transportation & Fleet Services (E)

PAY BANDS 'S' & 'E'

DIRECTOR Food & Nutrition Services (D)

DIRECTOR Procurement & Warehousing Services (D)

PAY BAND 'D'

ASSISTANT DIRECTOR Food & Nutrition Services (C)

COORDINATOR Food & Nutrition Services (C)

ASSISTANT DIRECTOR Procurement Compliance (C)

**C-50%** **G-50%** MANAGER Supplier Diversity & Outreach Program (C)

MANAGER Warehousing Services (B)

ASSISTANT DIRECTOR Transportation Support Services (C)

MANAGER I Vehicle Maintenance (C)

MANAGER Transportation Operations (C)

AREA SUPERVISOR Food & Nutrition Services (B) (11)

FINANCE MANAGER Food & Nutrition Services (C)

MANAGER Strategic Sourcing (C)

MANAGER Construction Sourcing (C)

SENIOR PROCESS ANALYST (C)

COORDINATOR Supplier Diversity & Outreach Program (26)

MANAGER II Transportation Terminal (2) (C)

SUPERVISOR Vehicle Maintenance (2) (25)

MANAGER Centralized Routing (C)

AREA SUPERVISOR Special Programs Food & Nutrition Services (B) (2)

PROGRAM MANAGER Nutrition, Education & Training (26)

PURCHASING AGENT IV (25)

PURCHASING AGENT IV Construction (25)

SENIOR PROCESS ANALYST (C)

**C-50%** **G-50%** COORDINATOR Supplier Diversity & Outreach Program (Compliance) (26)

ACCOUNTANT V (27)

DATA ANALYST Transportation (25)

SUPERVISOR Food & Nutrition Services Information Systems (B)

SUPERVISOR Food & Nutrition Services Equipment & Supplies (25)

PROCESS ANALYST Procurement & Warehousing Services (2) (25)

PROCESS ANALYST MWBE Construction (25)

MANAGER I Transportation Terminal (2) (B)

SUPERVISOR Special Needs Transportation (25)

ESMAB PAY BANDS 'C' & 'B'  
TSP PAY GRADES 25-28