



**THE SCHOOL BOARD OF BROWARD COUNTY, FLORIDA
2019-2020 ORGANIZATIONAL CHART**

Approved as Amended: 06/11/19

Pg 14 Revised: 06/25/19

Pg 17 Revised: 08/06/2019; 12/10/19; 04/21/20

Pg 10 Revised & Pg 20 Added: 10/02/19



**THE SCHOOL BOARD OF BROWARD COUNTY, FLORIDA
2019-2020 ORGANIZATIONAL CHART**

School Board Appointed Committees & Public Stakeholders	1
Superintendent of Schools	2
General Counsel	3
School Performance & Accountability	4
Academics	5-7
Learning & Development Support	5
Exceptional Student Learning Support	6
Student Learning	7
Student Support Initiatives & Recovery	8
Auditor	9
Capital Programs	10
Financial Management	11
Human Resources & Equity	12
Information & Technology	13
Portfolio Services	14
Communications	15
Chief of Staff	16
Safety, Security & Emergency Preparedness	17
Strategy & Operations	18-20
Business Support Center, Grants Administration, Strategic Implementation & Accountability	18
Food & Nutrition Services, Procurement & Warehousing Services, Supplier Diversity & Outreach, Student Transportation & Fleet Services	19
Physical Plant Operations	20

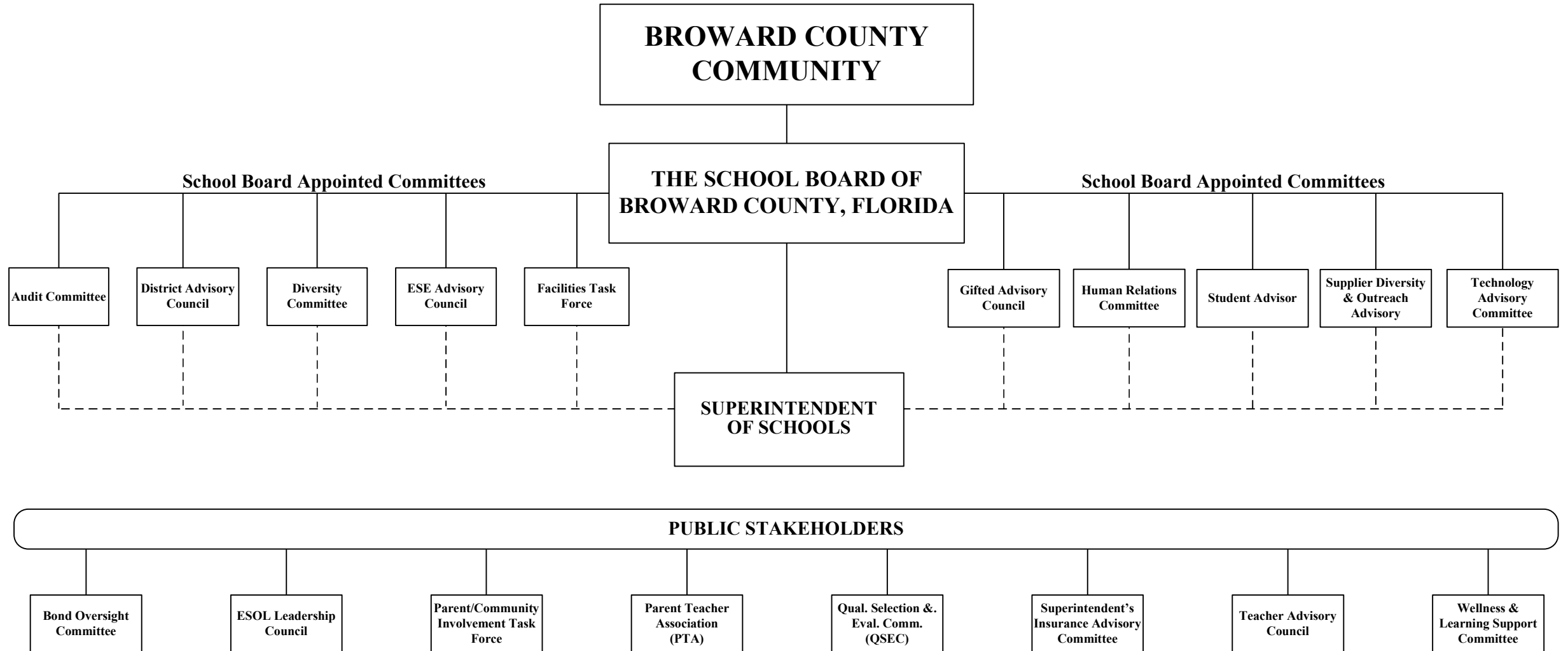


**THE SCHOOL BOARD OF BROWARD COUNTY, FL
2019-2020 ORGANIZATIONAL CHART**

**SCHOOL BOARD APPOINTED COMMITTEES &
PUBLIC STAKEHOLDERS**

Funding from sources other than General Funds

C Capital **FS** Food Service
G General **Gr** Grant

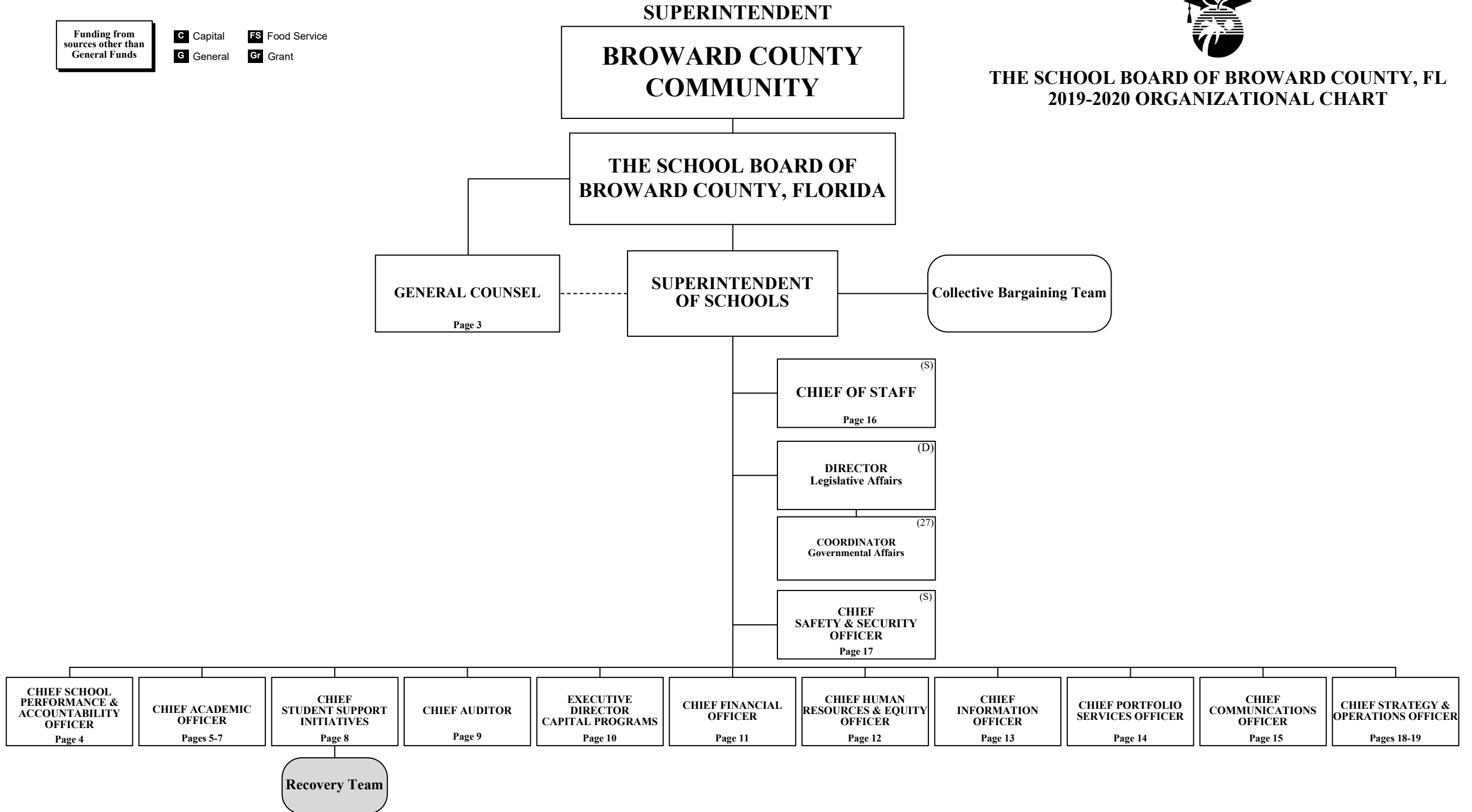




**THE SCHOOL BOARD OF BROWARD COUNTY, FL
2019-2020 ORGANIZATIONAL CHART**

Funding from sources other than General Funds

C Capital **FS** Food Service
G General **Gr** Grant



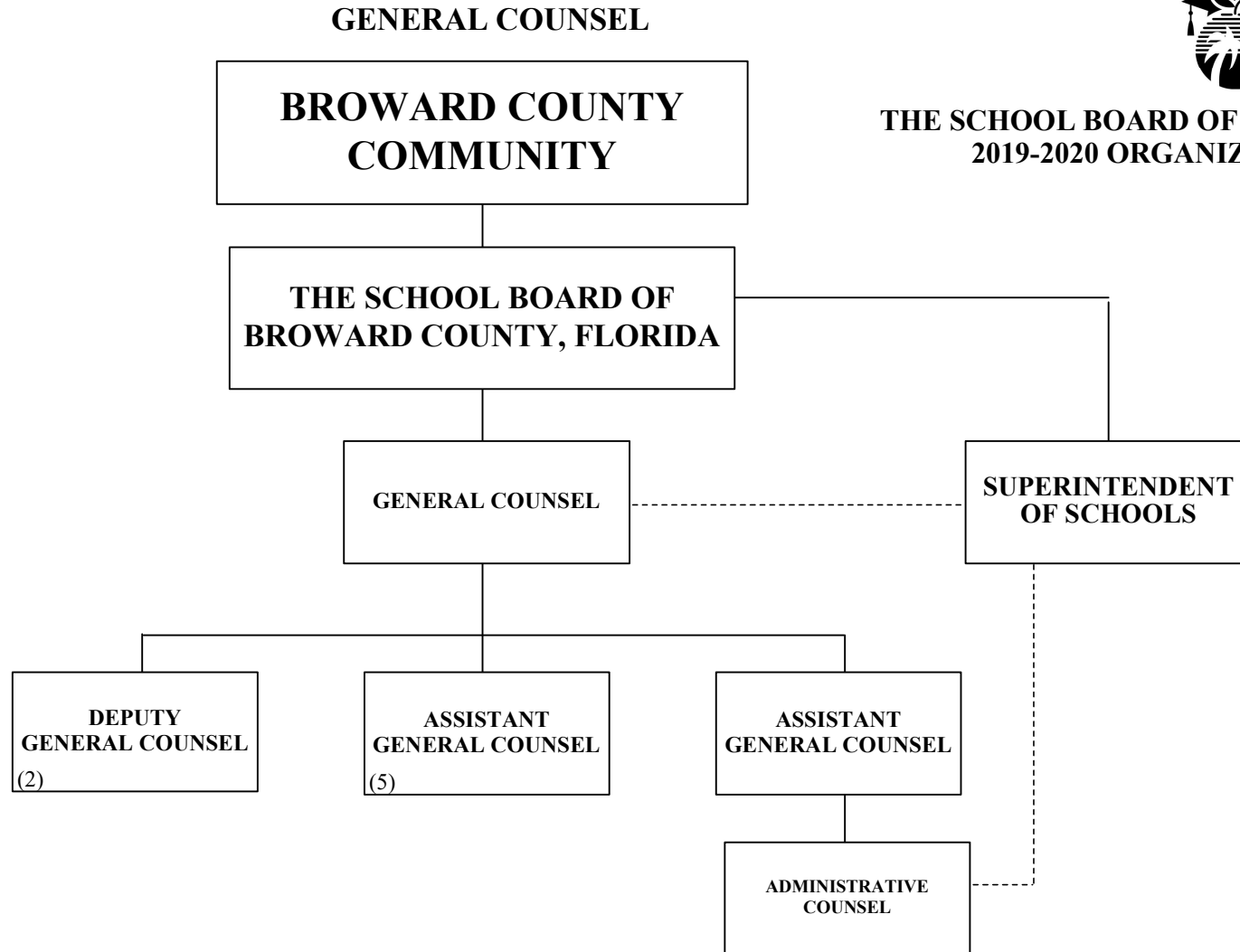
Funding from sources other than General Funds

C Capital
G General

FS Food Service
Gr Grant



**THE SCHOOL BOARD OF BROWARD COUNTY, FL
2019-2020 ORGANIZATIONAL CHART**





**THE SCHOOL BOARD OF BROWARD COUNTY, FL
2019-2020 ORGANIZATIONAL CHART**

Funding from sources other than General Funds

C Capital **FS** Food Service
G General **Gr** Grant

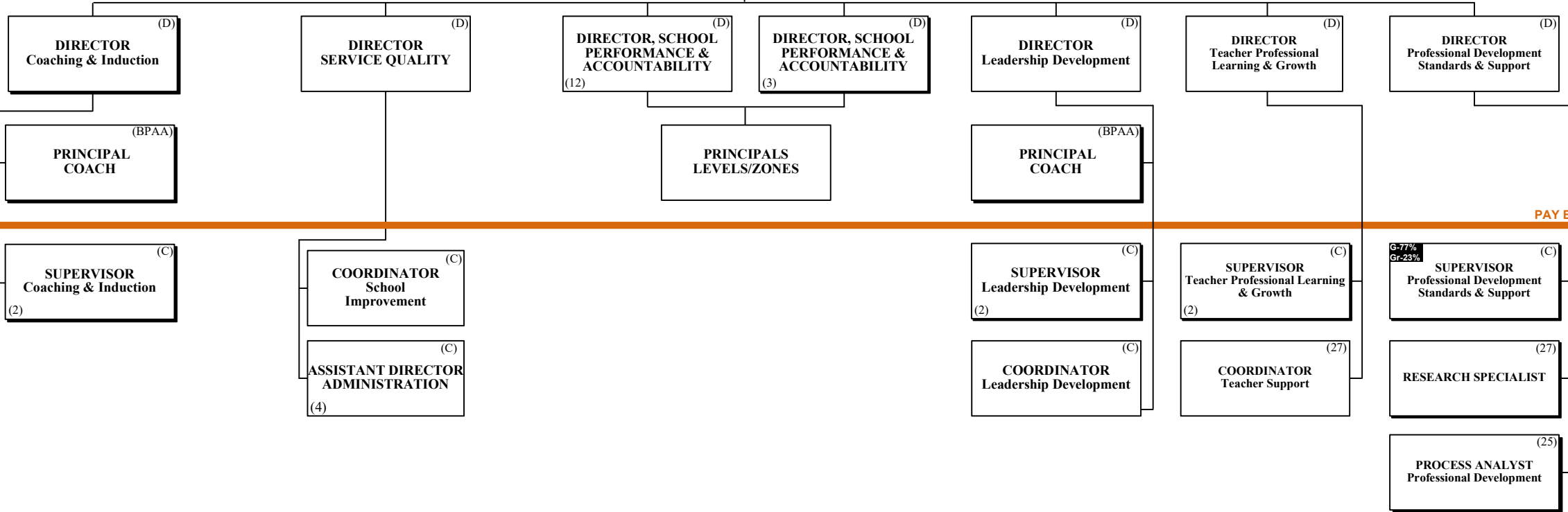
**SCHOOL PERFORMANCE & ACCOUNTABILITY
OSPA**

THE SCHOOL BOARD OF BROWARD COUNTY, FLORIDA

SUPERINTENDENT OF SCHOOLS

CHIEF SCHOOL PERFORMANCE & ACCOUNTABILITY OFFICER (S)

PAY BANDS 'S' & 'E'



PAY BAND 'D'

PAY BANDS 'C' & 'B'

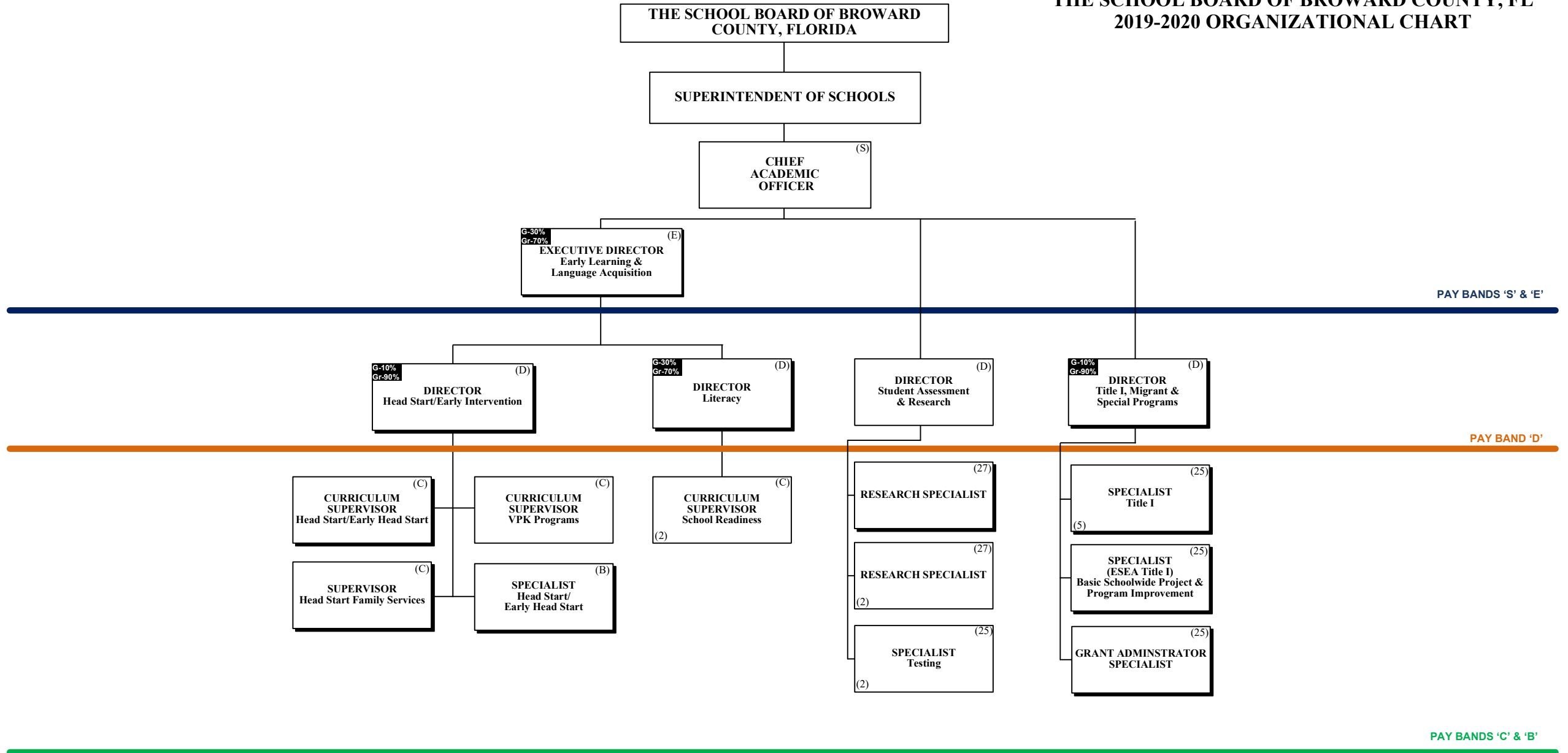
Funding from sources other than General Funds

C Capital **FS** Food Service
G General **Gr** Grant

ACADEMICS LEARNING & DEVELOPMENT SUPPORT



**THE SCHOOL BOARD OF BROWARD COUNTY, FL
2019-2020 ORGANIZATIONAL CHART**



Funding from sources other than General Funds

C Capital **FS** Food Service
G General **Gr** Grant

ACADEMICS EXCEPTIONAL STUDENT LEARNING SUPPORT



THE SCHOOL BOARD OF BROWARD COUNTY, FL
2019-2020 ORGANIZATIONAL CHART

THE SCHOOL BOARD OF BROWARD COUNTY, FLORIDA

SUPERINTENDENT OF SCHOOLS

CHIEF ACADEMIC OFFICER (S)

EXECUTIVE DIRECTOR Exceptional Student Learning Support (E)

PAY BANDS 'S' & 'E'

DIRECTOR Exceptional Student Learning Support (Pre-K/Elementary) (D)

DIRECTOR Exceptional Student Learning Support (Secondary) (D)

DIRECTOR Exceptional Student Learning Support Services (D)

PAY BAND 'D'

CURRICULUM SUPERVISOR Autism Spectrum Disorder (C)

CURRICULUM SUPERVISOR Emotional/Behavioral Disabilities (C)

CURRICULUM SUPERVISOR DHH/Visually Impaired (C)

CURRICULUM SUPERVISOR Behavior (C)

DISTRICT COORDINATOR Due Process (C)

DISTRICT COORDINATOR Due Process (C)

SUPERVISOR FL Diagnostic & Learning Resource System (C)

CURRICULUM SUPERVISOR Intellectual Disabilities (C)

SPECIALIST Deaf and Hard of Hearing Charter Schools (B)

CURRICULUM SUPERVISOR Exceptional Student Learning Support (C)

DISTRICT COORDINATOR Psychological Services (3) (C)

DISTRICT COORDINATOR Medicaid (27) (C)

CURRICULUM SUPERVISOR Preschool ESLSE (C)

CURRICULUM SUPERVISOR Specific Learning Disabilities (C)

SPECIALIST Visually Impaired Hospital Homebound/Private Schools (B)

SUPERVISOR ESLSE Transition Services (C)

DISTRICT COORDINATOR Speech-Language Physically Impaired (C)

DISTRICT COORDINATOR Severely Emotionally Disturbed Network (C)

MANAGER SSS/ESLSE Electronic Management System EZ IEP (26) (C)

PAY BANDS 'C' & 'B'

Funding from sources other than General Funds

C Capital **FS** Food Service
G General **Gr** Grant

ACADEMICS STUDENT LEARNING

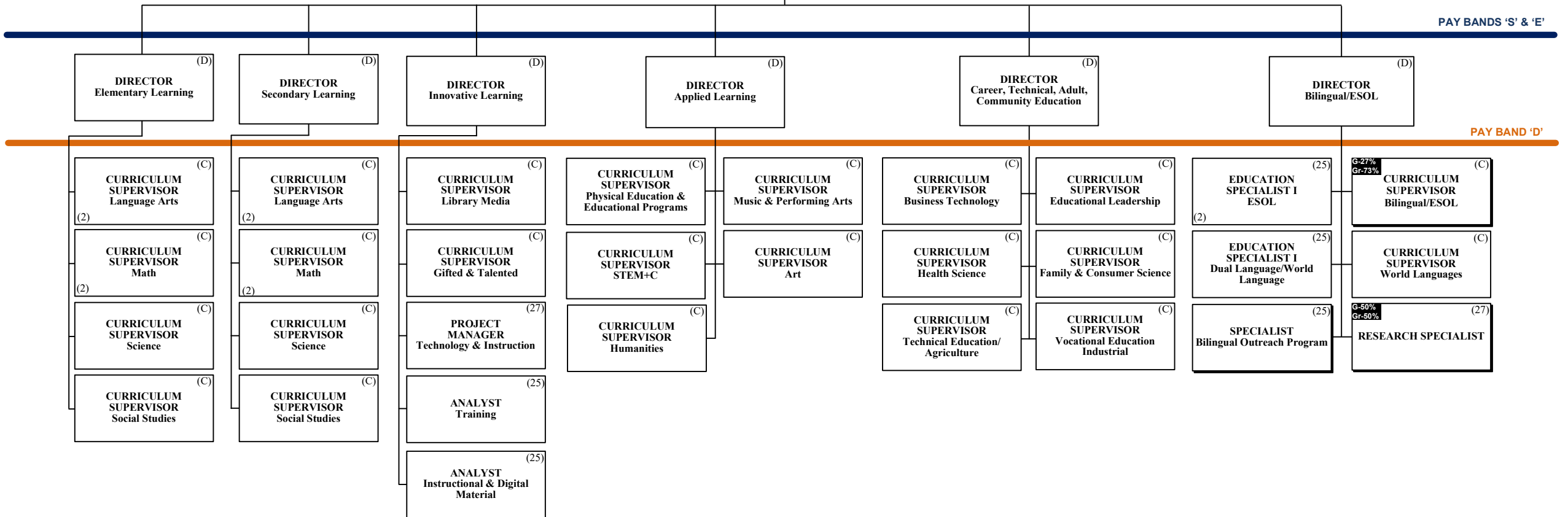


THE SCHOOL BOARD OF BROWARD COUNTY, FLORIDA

THE SCHOOL BOARD OF BROWARD COUNTY, FL
2019-2020 ORGANIZATIONAL CHART

SUPERINTENDENT OF SCHOOLS

CHIEF ACADEMIC OFFICER ^(S)



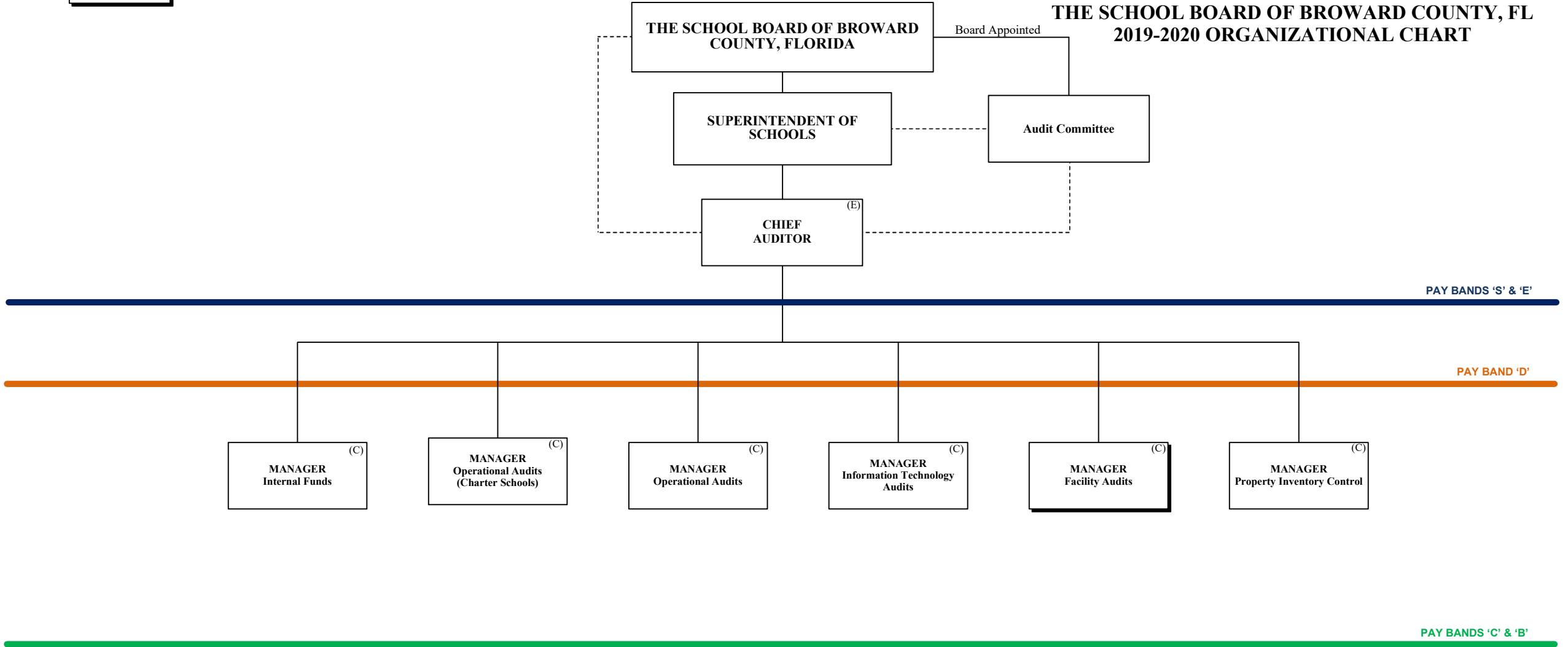


Funding from sources other than General Funds

- C** Capital
- FS** Food Service
- G** General
- Gr** Grant

AUDITOR

THE SCHOOL BOARD OF BROWARD COUNTY, FL 2019-2020 ORGANIZATIONAL CHART





**THE SCHOOL BOARD OF BROWARD COUNTY, FL
2019-2020 ORGANIZATIONAL CHART**

CAPITAL PROGRAMS

Funding from sources other than General Funds

- C** Capital **FS** Food Service
- G** General **Gr** Grant

THE SCHOOL BOARD OF BROWARD COUNTY, FLORIDA

SUPERINTENDENT OF SCHOOLS

**EXECUTIVE DIRECTOR
Capital Programs** (E)

PAY BANDS 'S' & 'E'

**DIRECTOR
Construction** (D)

**DIRECTOR
Program Controls** (D)

**DIRECTOR
Pre-Construction** (D)

PAY BAND 'D'

**MANAGER
Construction** (C)

**MANAGER
Construction** (C)
(2)

**MANAGER
Database Administration** (27)

**MANAGER
Mechanical Engineering** (C)

**MANAGER
ADA Accessibility** (C)

**PROJECT
MANAGER III** (27)

**MANAGER
Business Process &
Performance
Improvement** (C)

**MANAGER
Architectural Engineering** (C)

**SPECIALIST
ADA Accessibility** (25)

**MANAGER
Electrical Engineering** (C)

**PROJECT
MANAGER III** (27)

Board Approved: 06/11/2019
Revised: 10/02/2019

ESMAB PAY BANDS 'C' & 'B'
TSP PAY GRADES 25-28



**THE SCHOOL BOARD OF BROWARD COUNTY, FL
2019-2020 ORGANIZATIONAL CHART**

Funding from sources other than General Funds

C Capital **FS** Food Service
G General **Gr** Grant

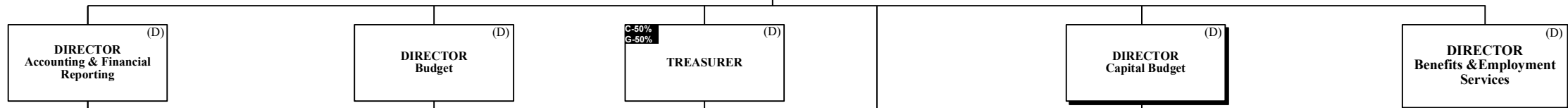
FINANCIAL MANAGEMENT

THE SCHOOL BOARD OF BROWARD COUNTY, FLORIDA

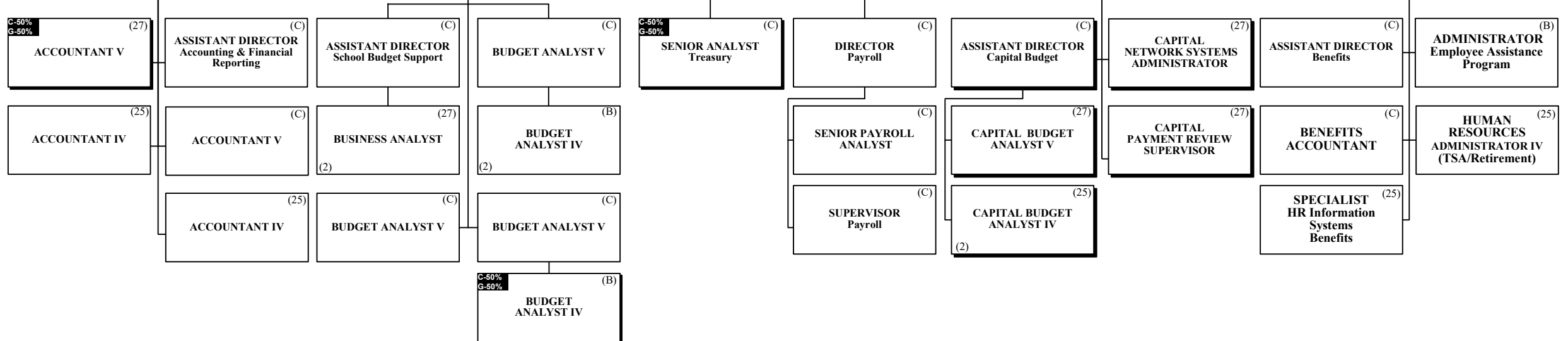
SUPERINTENDENT OF SCHOOLS

CHIEF FINANCIAL OFFICER (CFO)
C-20% G-80% (S)

PAY BANDS 'S' & 'E'



PAY BAND 'D'



ESMAB PAY BANDS 'C' & 'B'
TSP PAY GRADES 25-28

Funding from sources other than General Funds

C Capital **FS** Food Service
G General **Gr** Grant

HUMAN RESOURCES & EQUITY

THE SCHOOL BOARD OF BROWARD COUNTY, FLORIDA



THE SCHOOL BOARD OF BROWARD COUNTY, FL 2019-2020 ORGANIZATIONAL CHART

SUPERINTENDENT OF SCHOOLS

CHIEF HUMAN RESOURCES & EQUITY OFFICER (S)

Collective Bargaining

PAY BANDS 'S' & 'E'

DIRECTOR (D)
Employee Evaluations

DIRECTOR (D)
Talent Acquisition & Operations (Instructional)

DIRECTOR (D)
Talent Acquisition & Operations (Non-Instructional)

DIRECTOR (D)
Employee & Labor Relations

DIRECTOR (D)
Compensation & HR Support Services

DIRECTOR (D)
EEO/ADA Compliance

PAY BAND 'D'

COORDINATOR (C)
Evaluation (3)
RESEARCH SPECIALIST (27)

MANAGER (C)
Certification/Incentives
SPECIALIST (25)
HR Information Systems

COORDINATOR (27)
Non-Instructional Development

MANAGER (C)
Employee & Labor Relations
HR SPECIALIST (2)

MANAGER (C)
Employee & Labor Relations
SPECIALIST (2)
Employee & Labor Relations

MANAGER (C)
HR Support Services

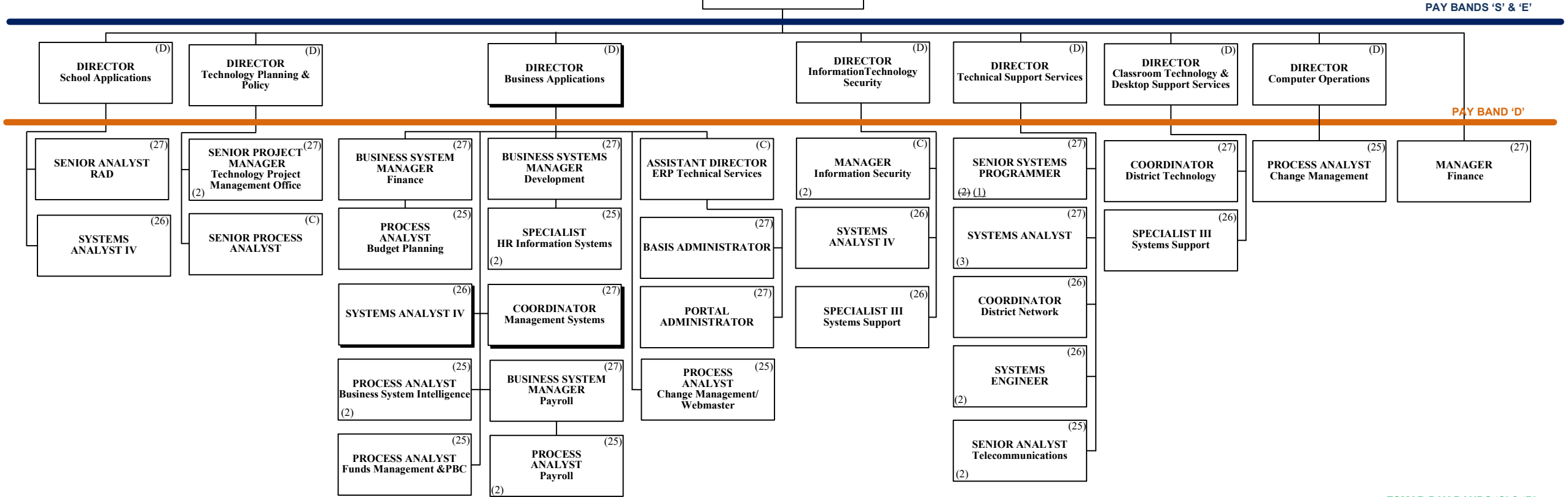
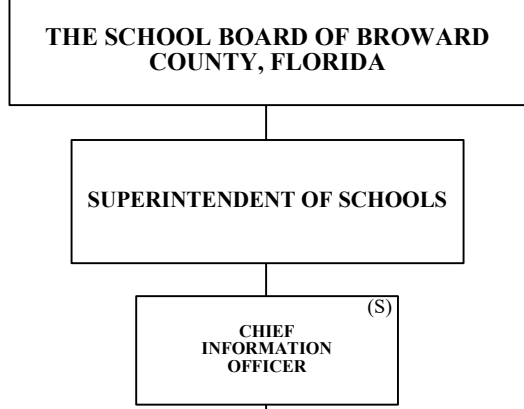
ESMAB PAY BANDS 'C' & 'B'
TSP/PBA PAY GRADES 25-28



INFORMATION & TECHNOLOGY

THE SCHOOL BOARD OF BROWARD COUNTY, FL 2019-2020 ORGANIZATIONAL CHART

Funding from sources other than General Funds	C Capital	FS Food Service
sources other than General Funds	G General	Gr Grant
New Position Job Description Does Not Exist	N New Position Job Description Exists	R Reporting Change from Different Division
Revision to Existing Job Description/Title Change	N Job Study on Existing Position	A Alignment Change within same Division
	Funding:	
	C Capital	FS Food Service
	G General	Gr Grant
		Direct Report
		Indirect Report



ESMAB PAY BANDS 'C' & 'B'
TSP PAY GRADES 25-28



**THE SCHOOL BOARD OF BROWARD COUNTY, FL
2019-2020 ORGANIZATIONAL CHART**

Funding from sources other than General Funds

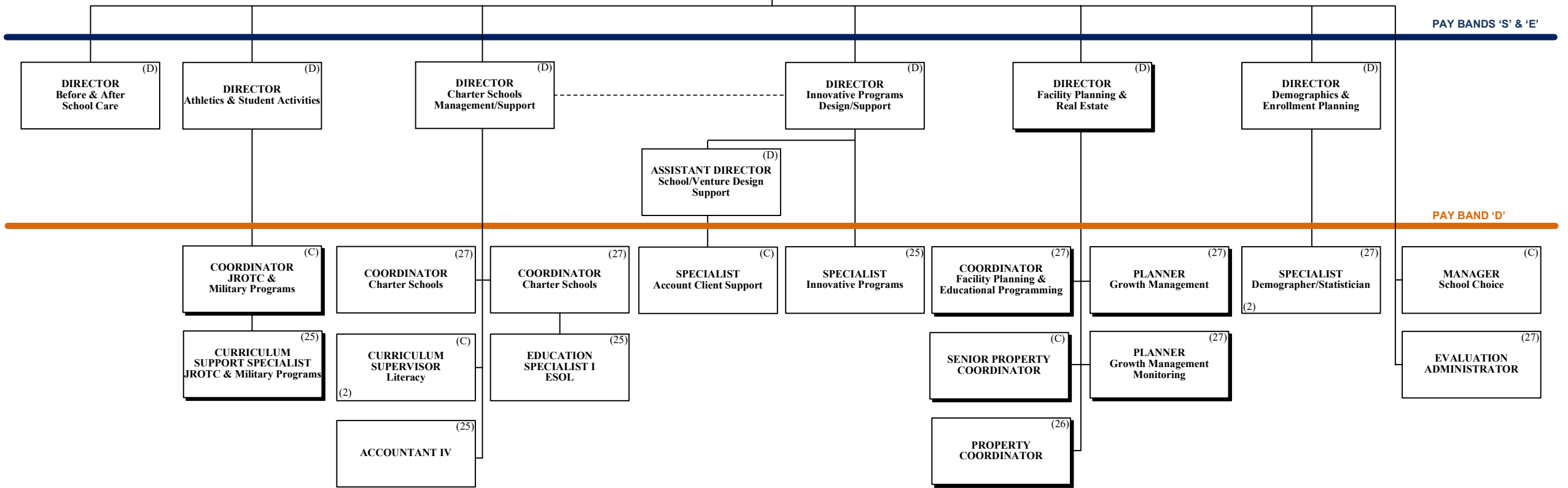
C Capital **FS** Food Service
G General **Gr** Grant

PORTFOLIO SERVICES

THE SCHOOL BOARD OF BROWARD COUNTY, FLORIDA

SUPERINTENDENT OF SCHOOLS

CHIEF PORTFOLIO SERVICES OFFICER (E)



PAY BANDS 'S' & 'E'

PAY BAND 'D'

ESMAB PAY BANDS 'C' & 'B'
TSP PAY GRADES 25-28



**THE SCHOOL BOARD OF BROWARD COUNTY, FL
2019-2020 ORGANIZATIONAL CHART**

Funding from sources other than General Funds

- C** Capital **FS** Food Service
- G** General **Gr** Grant

COMMUNICATIONS

THE SCHOOL BOARD OF BROWARD COUNTY, FLORIDA

SUPERINTENDENT OF SCHOOLS

CHIEF COMMUNICATIONS OFFICER (E)

PAY BANDS 'S' & 'E'

DIRECTOR/ GENERAL MANAGER
Broward Educational Communication Network (BECON) (D)

DIRECTOR
Marketing & Strategic Communications (D)

PAY BAND 'D'

BECON STATION MANAGER (28)

MANAGER II Engineering (26)

MANAGER Media & Community Relations (C)

COORDINATOR District Community Relations (27)

COORDINATOR BECON Public Relations & Fundraising (26)

MANAGER II Production (26)

SPECIALIST Communications (25)
(2)

MANAGER of GRAPHICS (26)

MANAGER II School Services (B)

ESMAB PAY BANDS 'C' & 'B'
TSP PAY GRADES 25-28



THE SCHOOL BOARD OF BROWARD COUNTY, FL 2019-2020 ORGANIZATIONAL CHART

Funding from sources other than General Funds

C Capital **FS** Food Service
G General **Gr** Grant

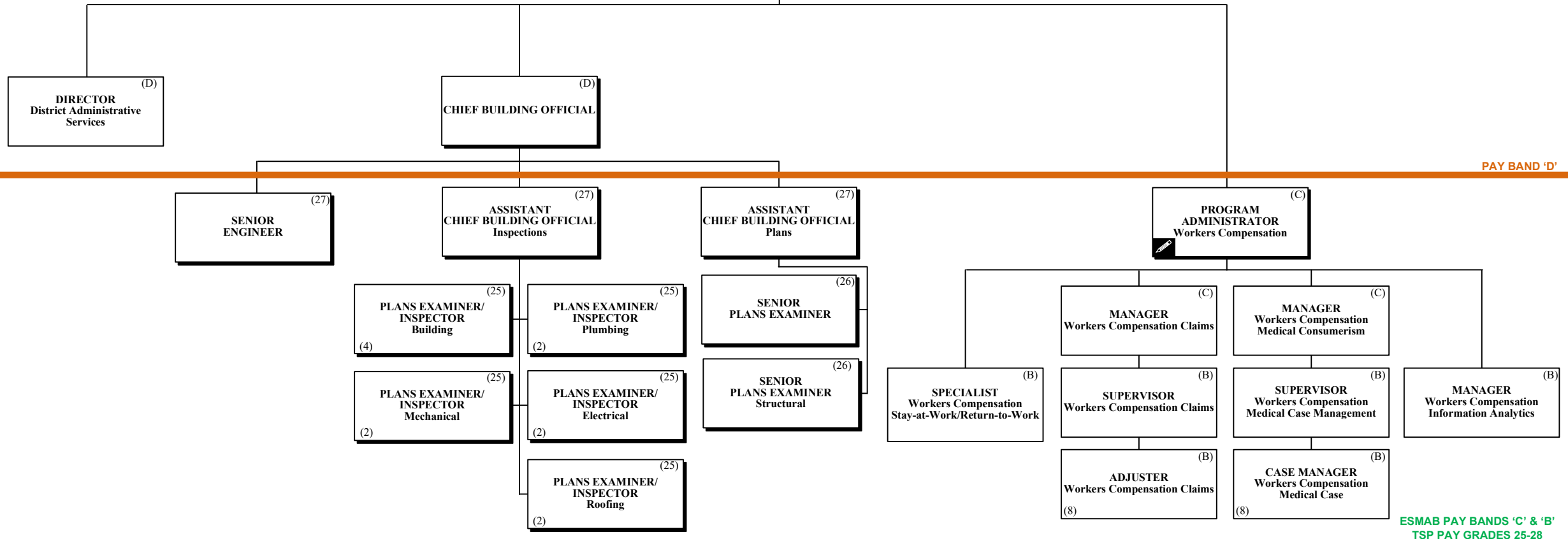
CHIEF OF STAFF

THE SCHOOL BOARD OF BROWARD COUNTY, FLORIDA

SUPERINTENDENT OF SCHOOLS

CHIEF OF STAFF (S)

PAY BANDS 'S' & 'E'



PAY BAND 'D'

ESMAB PAY BANDS 'C' & 'B'
TSP PAY GRADES 25-28

Funding from sources other than General Funds

- C** Capital **FS** Food Service
- G** General **Gr** Grant
- R** Referendum

SAFETY, SECURITY & EMERGENCY PREPAREDNESS



THE SCHOOL BOARD OF BROWARD COUNTY, FLORIDA

THE SCHOOL BOARD OF BROWARD COUNTY, FL 2019-2020 ORGANIZATIONAL CHART

SUPERINTENDENT OF SCHOOLS

CHIEF SAFETY & SECURITY OFFICER (S)

EXECUTIVE DIRECTOR (E)
Enterprise Risk & Emergency Preparedness

DIRECTOR (D)
Risk Management

DIRECTOR (D)
School Security Support Services

C DIRECTOR (D)
Environmental Health & Safety

DIRECTOR (D)
Safety & Security Operations

CHIEF (D)
Special Investigative Unit (SIU)

C CHIEF FIRE OFFICIAL (D)

PAY BANDS 'S' & 'E'

PAY BAND 'D'

BUDGET ANALYST V (C)

SENIOR DATA ANALYST (27)

MANAGER (B)
Emergency Management

PROJECT MANAGER (25)
Safety, Security & Emergency Preparedness

PERSONNEL ADMINISTRATOR (C)
Training/Clearance

COORDINATOR (25)
School Safety

MANAGER (25)
District Security Operations Center

C MANAGER (27)
Environmental Conservation/Utility Management

C SPECIALIST IV (25)
Building Control

C SPECIALIST (25)
Safety Training

C COORDINATOR (B)
Health & Safety

C COORDINATOR (C)
Local Education Agency (LEA)

C PROJECT MANAGER (25)
Occupational Health/Environmental Control

C PROJECT MANAGER I (25)

AREA MANAGER (25)
Security (7)

R AREA MANAGER (25)
Security (9)

LIEUTENANT (C)
(2)

DETECTIVE (25)
SIU (18)

DETECTIVE (25)
DISTRICT LIAISON School Resource Officers

C PLANS EXAMINER/INSPECTOR (25)
Fire (3)

Board Approved: 06/11/2019
Revised: 08/06/2019; 12/10/19; 04/21/20

ESMAB PAY BANDS 'C' & 'B'
TSP PAY GRADES 25-28

Funding from sources other than General Funds

C Capital **FS** Food Service
G General **Gr** Grant

STRATEGY & OPERATIONS



THE SCHOOL BOARD OF BROWARD COUNTY, FL 2019-2020 ORGANIZATIONAL CHART

THE SCHOOL BOARD OF BROWARD COUNTY, FLORIDA

SUPERINTENDENT OF SCHOOLS

CHIEF STRATEGY & OPERATIONS OFFICER (S)

EXECUTIVE DIRECTOR Strategic Initiative Management (E)

PAY BANDS 'S' & 'E'

DIRECTOR Business Support Center (D)

DIRECTOR Grants Administration (D)

DIRECTOR Performance Management (D)

DIRECTOR Program Evaluation (D)

PAY BAND 'D'

MANAGER Budget (27)

BUSINESS ANALYST (27)
(2)

SUPERVISOR I Printing Services (26)

SENIOR MANAGER Grant Programs (C)

MANAGER Grant Programs Oversight (26)
(2)

GRANTS ADMINISTRATOR Accountability & Reporting (25)

COORDINATOR Performance Management (C)

COORDINATOR Strategic Management (C)

EVALUATION ADMINISTRATOR (27)

Board Approved: 06/11/2019
 Revised: 10/02/2019

ESMAB PAY BANDS 'C' & 'B'
 TSP PAY GRADES 25-28



**THE SCHOOL BOARD OF BROWARD COUNTY, FL
2019-2020 ORGANIZATIONAL CHART**

Funding from sources other than General Funds

C Capital **FS** Food Service
G General **Gr** Grant

STRATEGY & OPERATIONS

THE SCHOOL BOARD OF BROWARD COUNTY, FLORIDA

SUPERINTENDENT OF SCHOOLS

CHIEF STRATEGY & OPERATIONS OFFICER (S)

EXECUTIVE DIRECTOR Student Transportation & Fleet Services (E)

PAY BANDS 'S' & 'E'

DIRECTOR Food & Nutrition Services (D)

DIRECTOR Procurement & Warehousing Services (D)

OFFICER Economic Development & Diversity Compliance (D)
C-50%
G-50%

DIRECTOR Student Transportation & Fleet Services (E) (D)

PAY BAND 'D'

ASSISTANT DIRECTOR Food & Nutrition Services (C)

COORDINATOR Food & Nutrition Services (C)

ASSISTANT DIRECTOR Procurement Compliance (C)

MANAGER Warehousing Services (B)

MANAGER Supplier Diversity & Outreach Program (C)
C-50%
G-50%

ASSISTANT DIRECTOR Transportation Support Services (C)

MANAGER I Transportation Terminal (B)
(2)

MANAGER I Vehicle Maintenance (C)

MANAGER Centralized Routing (C)

AREA SUPERVISOR Food & Nutrition Services (B)
(11)

FINANCE MANAGER Food & Nutrition Services (C)

MANAGER Strategic Sourcing (C)

MANAGER Construction Sourcing (C)

SENIOR PROCESS ANALYST (C)

COORDINATOR Supplier Diversity & Outreach Program (26)

MANAGER II Transportation Terminal (C)
(2)

SUPERVISOR Special Needs Transportation (25)

SUPERVISOR Vehicle Maintenance (25)
(2)

DATA ANALYST Transportation (25)

AREA SUPERVISOR Special Programs Food & Nutrition Services (B)
(2)

PROGRAM MANAGER Nutrition, Education & Training (26)

PURCHASING AGENT IV (25)

PURCHASING AGENT IV Construction (25)

SENIOR PROCESS ANALYST (C)

COORDINATOR Supplier Diversity & Outreach Program (Compliance) (26)
C-50%
G-50%

ACCOUNTANT V (27)

SUPERVISOR Food & Nutrition Services Information Systems (B)

SUPERVISOR Food & Nutrition Services Equipment & Supplies (25)

PROCESS ANALYST Procurement & Warehousing Services (25)
(2)

Board Approved: 06/11/2019
Revised: 10/02/2019

ESMAB PAY BANDS 'C' & 'B'
TSP PAY GRADES 25-28



THE SCHOOL BOARD OF BROWARD COUNTY, FL
2019-2020 ORGANIZATIONAL CHART

Funding from sources other than General Funds

C Capital **FS** Food Service
G General **Gr** Grant

STRATEGY & OPERATIONS

THE SCHOOL BOARD OF BROWARD COUNTY, FLORIDA

SUPERINTENDENT OF SCHOOLS

CHIEF STRATEGY & OPERATIONS OFFICER (S)

EXECUTIVE DIRECTOR Physical Plant Operations (E)

PAY BANDS 'S' & 'E'

DIRECTOR Physical Plant Operations (D)
C-70%
G-30%

PAY BAND 'D'

MANAGER Custodial/Grounds (C)
C-55%
G-45%

AREA MANAGER Trades Zone 1 (C)
C-70%
G-30%

AREA MANAGER Trades Zone 3 (C)
C-70%
G-30%

MANAGER Facilities Support Services (C)

MANAGER PPO Finance (C)

MANAGER Grounds (26)
C-55%
G-45%

AREA MANAGER Trades Zone 2 (C)
C-70%
G-30%

AREA MANAGER Trades District (C)
C-70%
G-30%

SUPERVISOR Work Flow/Labor Utilization (25)
C-55%
G-45%

SUPERVISOR Planning & Scheduling (25)
C-55%
G-45%

TRADE SUPERVISOR (25)
(9)

ESMAB PAY BANDS 'C' & 'B'
TSP PAY GRADES 25-28