



**THE SCHOOL BOARD OF BROWARD COUNTY, FLORIDA
2020-2021 ORGANIZATIONAL CHART**

Board Approved: 06/09/20



**THE SCHOOL BOARD OF BROWARD COUNTY, FLORIDA
2020-2021 ORGANIZATIONAL CHART**

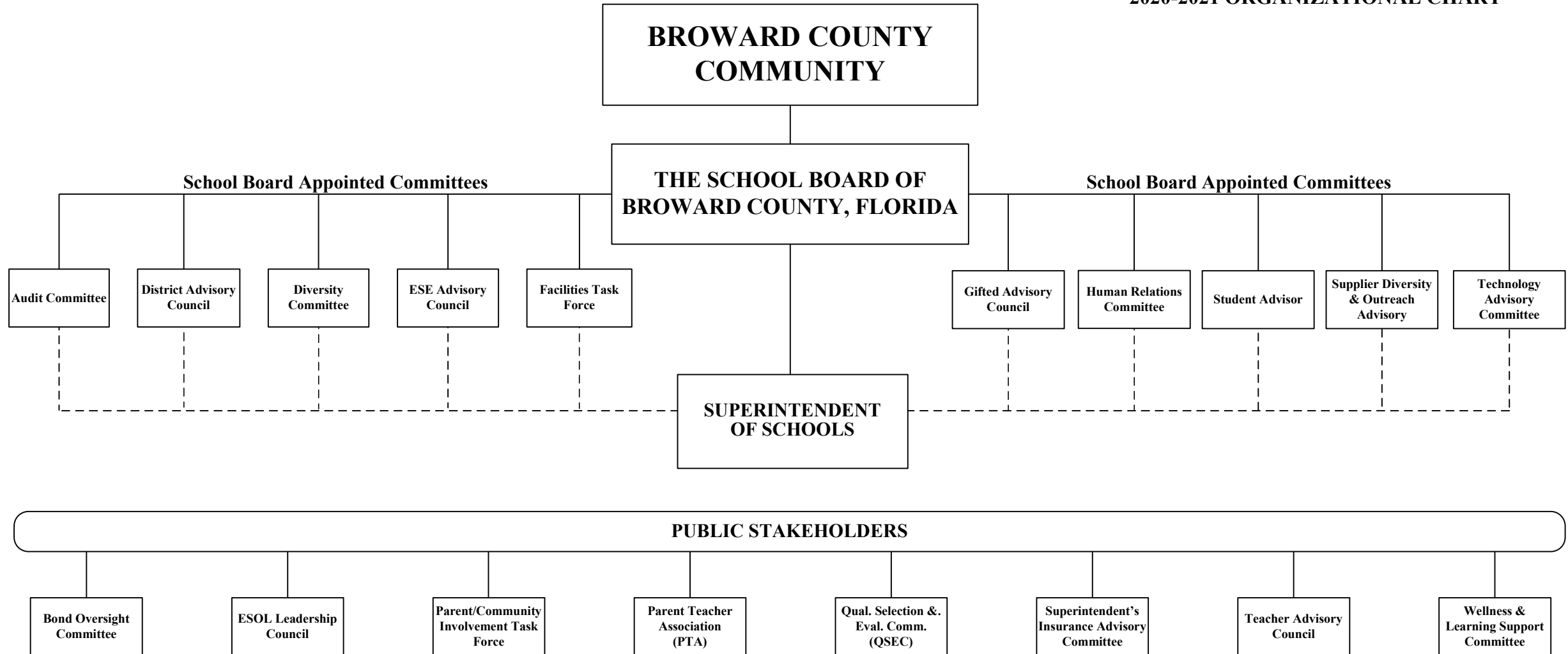
School Board Appointed Committees & Public Stakeholders	1
Superintendent of Schools	2
General Counsel	3
School Performance & Accountability	4
Academics	5-7
Learning & Development Support	5
Exceptional Student Learning Support	6
Student Learning	7
Student Support Initiatives & Recovery	8
Auditor	9
Capital Programs	10
Financial Management	11
Human Resources & Equity	12
Information & Technology	13
Portfolio Services	14
Communications	15
Chief of Staff	16
Safety, Security & Emergency Preparedness	17
Strategy & Operations	18-20
Business Support Center, Grants Administration, Strategic Implementation & Accountability	18
Food & Nutrition Services, Procurement & Warehousing Services, Supplier Diversity & Outreach, Student Transportation & Fleet Services	19
Physical Plant Operations	20



**THE SCHOOL BOARD OF BROWARD COUNTY, FL
2020-2021 ORGANIZATIONAL CHART**

**SCHOOL BOARD APPOINTED COMMITTEES &
PUBLIC STAKEHOLDERS**

Funding from sources other than General Funds
Funding: **C** Capital **FS** Food Service **Gr** Grant
G General **R** Referendum

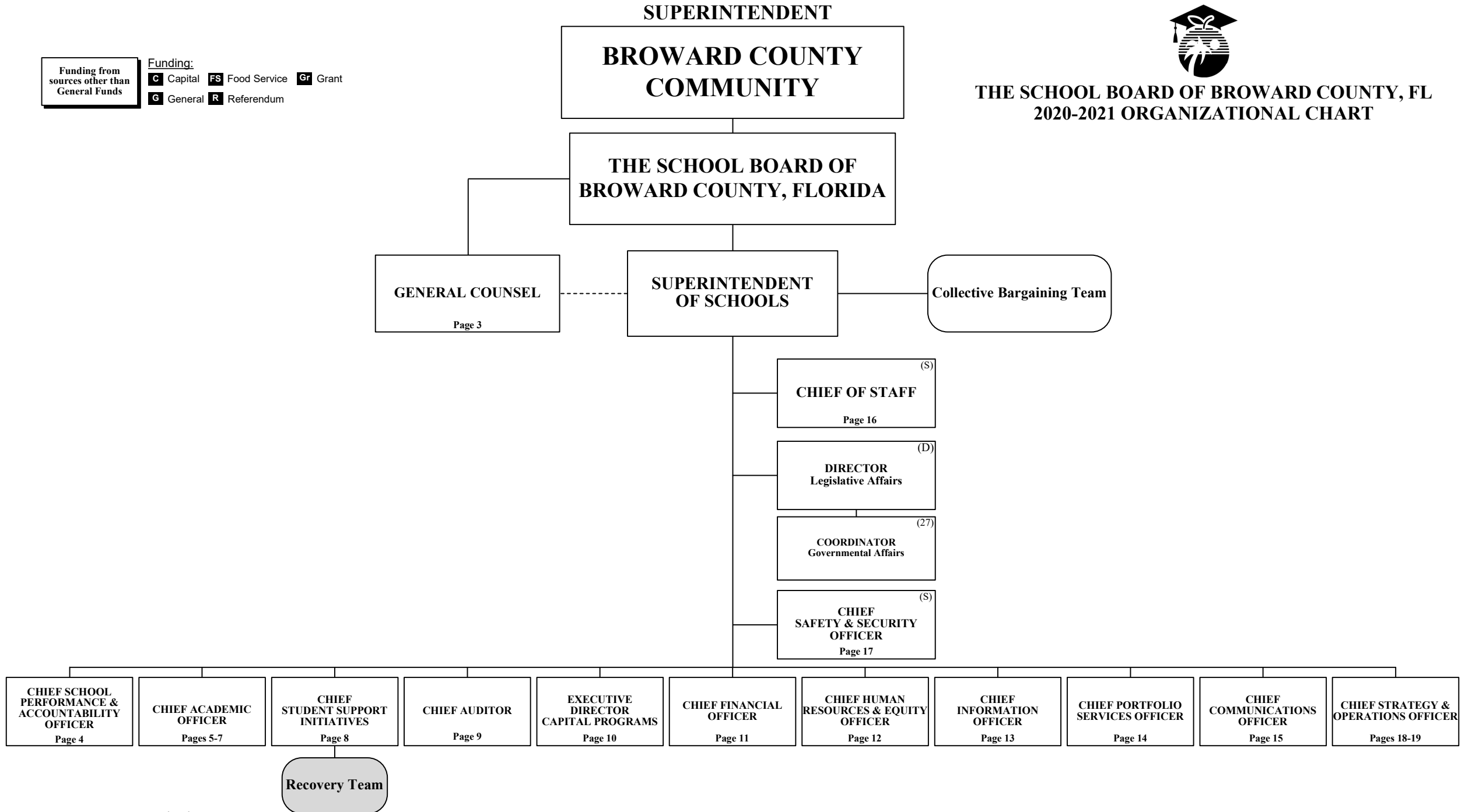


Funding from sources other than General Funds

Funding:
C Capital **FS** Food Service **Gr** Grant
G General **R** Referendum



**THE SCHOOL BOARD OF BROWARD COUNTY, FL
 2020-2021 ORGANIZATIONAL CHART**



Board Approved: 06/09/20

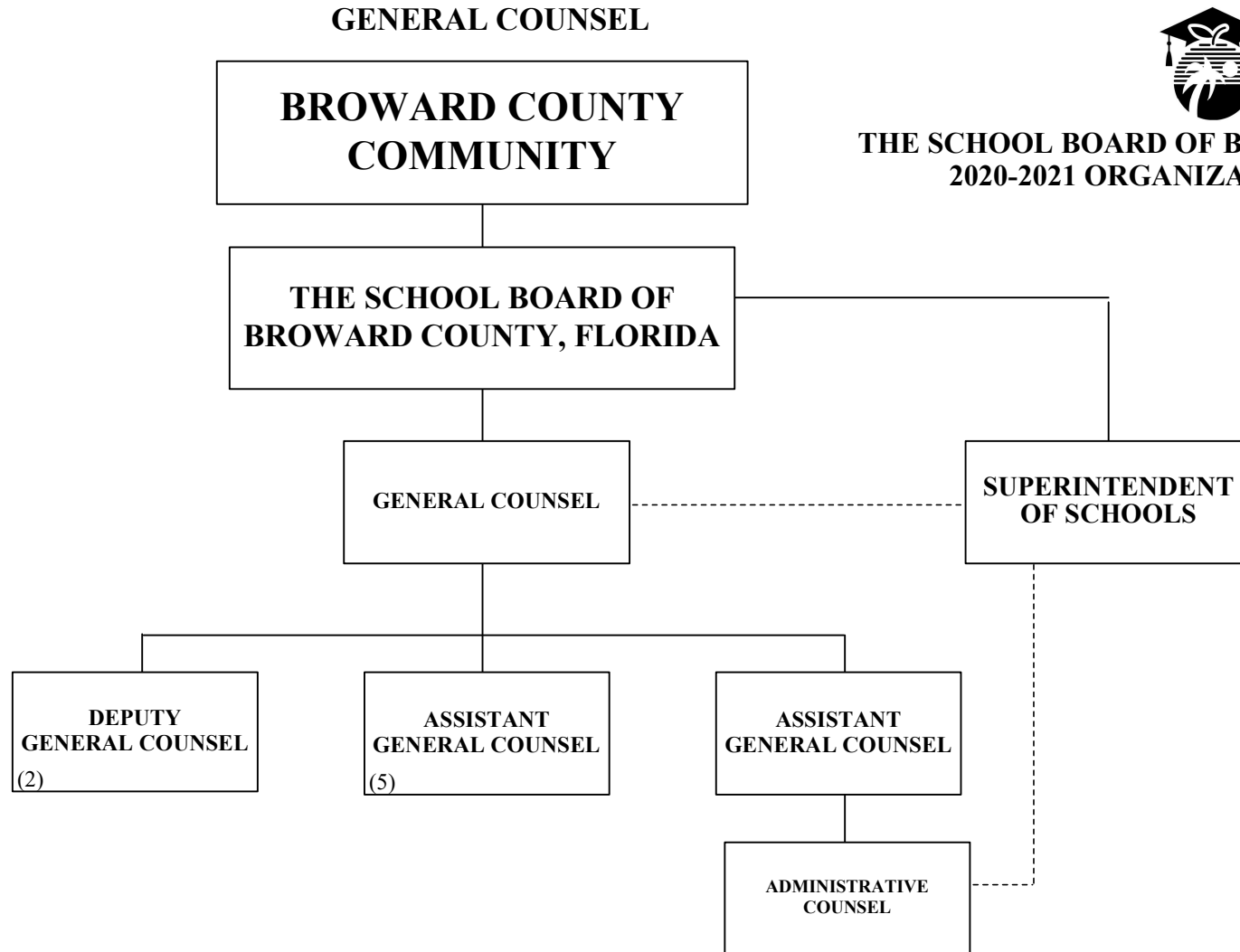
Funding from sources other than General Funds

Funding:

C Capital **FS** Food Service **Gr** Grant
G General **R** Referendum



**THE SCHOOL BOARD OF BROWARD COUNTY, FL
2020-2021 ORGANIZATIONAL CHART**



Funding from sources other than General Funds

Funding:

C Capital **FS** Food Service **Gr** Grant
G General **R** Referendum

SCHOOL PERFORMANCE & ACCOUNTABILITY OSPA



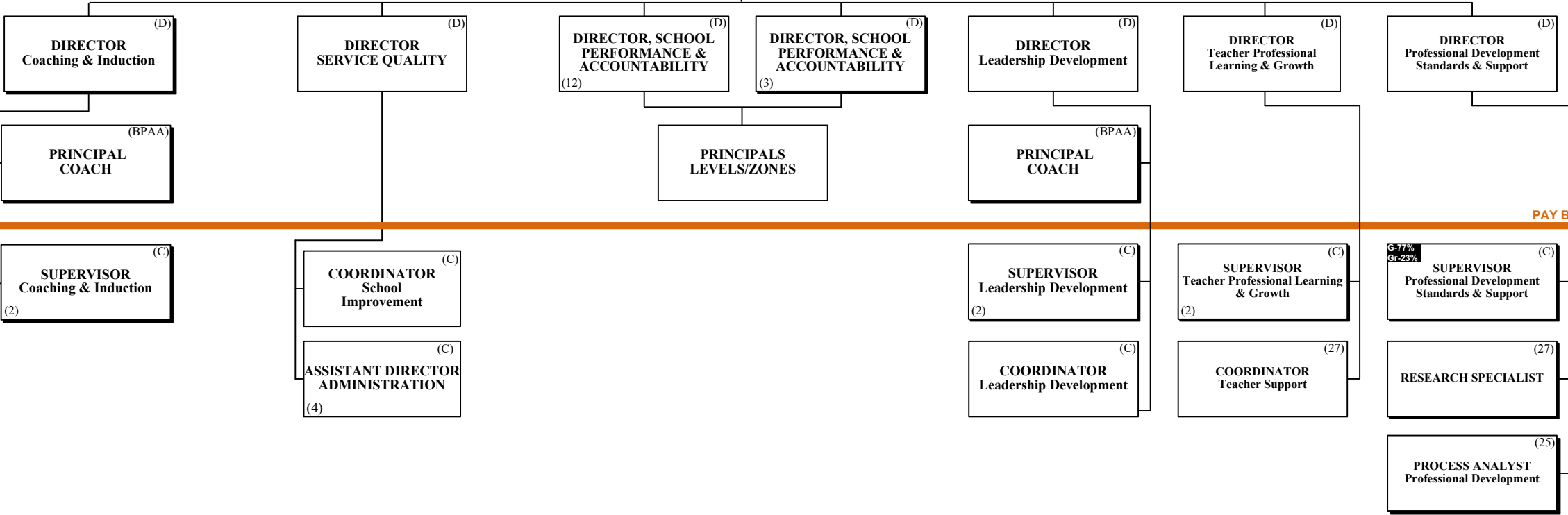
THE SCHOOL BOARD OF BROWARD COUNTY, FLORIDA

THE SCHOOL BOARD OF BROWARD COUNTY, FL
 2020-2021 ORGANIZATIONAL CHART

SUPERINTENDENT OF SCHOOLS

CHIEF SCHOOL PERFORMANCE & ACCOUNTABILITY OFFICER (S)

PAY BANDS 'S' & 'E'



PAY BAND 'D'

PAY BANDS 'C' & 'B'

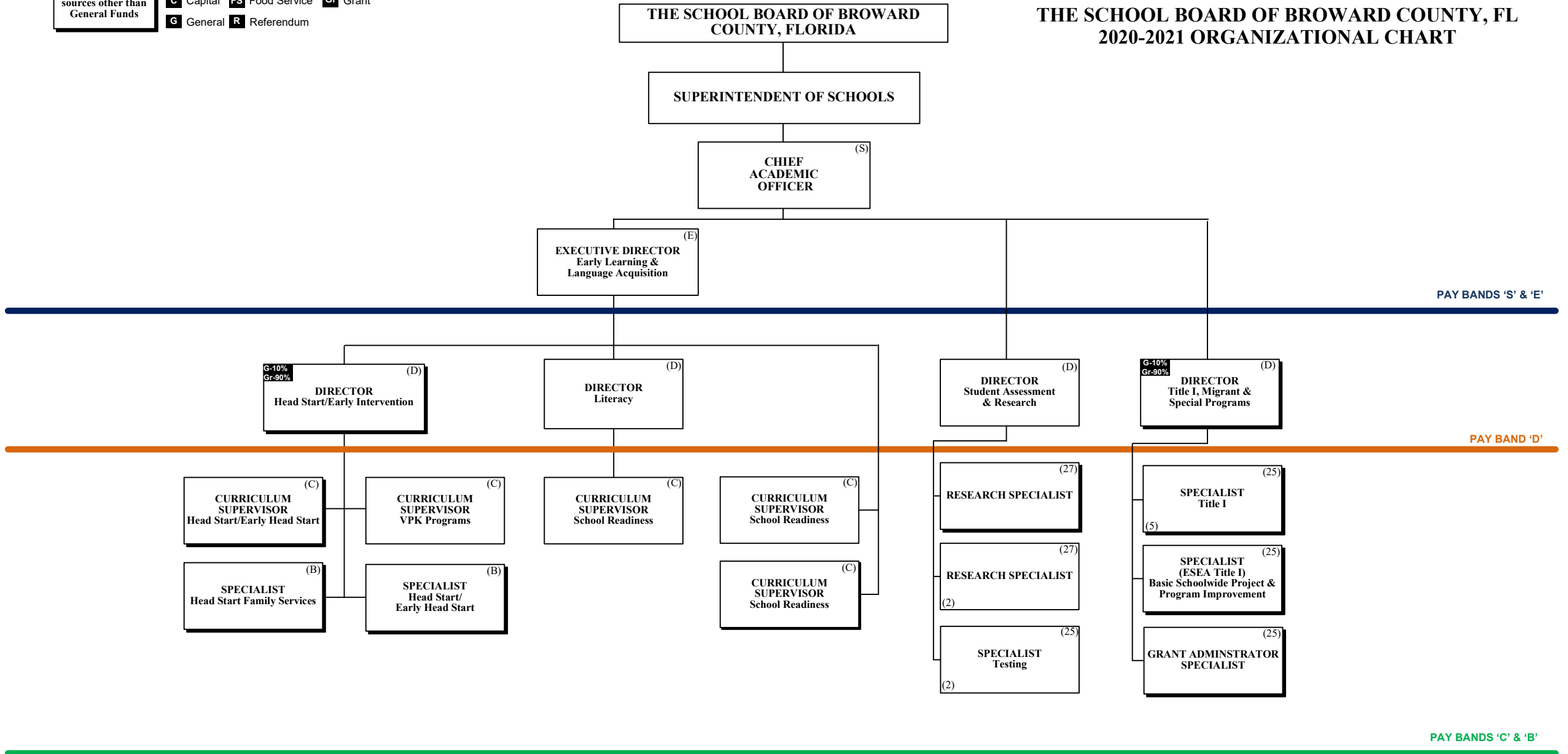
ACADEMICS LEARNING & DEVELOPMENT SUPPORT



**THE SCHOOL BOARD OF BROWARD COUNTY, FL
2020-2021 ORGANIZATIONAL CHART**

Funding from sources other than General Funds

Funding:
C Capital **FS** Food Service **Gr** Grant
G General **R** Referendum



ACADEMICS EXCEPTIONAL STUDENT LEARNING SUPPORT



**THE SCHOOL BOARD OF BROWARD COUNTY, FL
2020-2021 ORGANIZATIONAL CHART**

Funding from sources other than General Funds

Funding:
C Capital **FS** Food Service **Gr** Grant
G General **R** Referendum

THE SCHOOL BOARD OF BROWARD COUNTY, FLORIDA

SUPERINTENDENT OF SCHOOLS

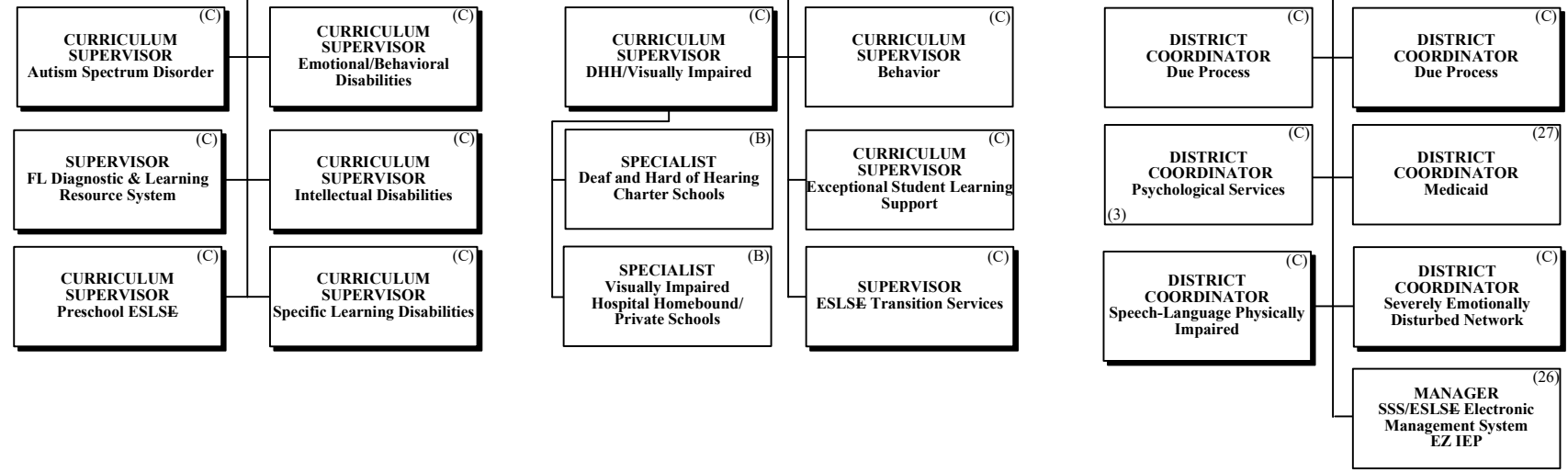
CHIEF ACADEMIC OFFICER ^(S)

EXECUTIVE DIRECTOR
Exceptional Student Learning Support ^(E)

PAY BANDS 'S' & 'E'

DIRECTOR ^(D) Exceptional Student Learning Support (Pre-K/Elementary)
 DIRECTOR ^(D) Exceptional Student Learning Support (Secondary)
 DIRECTOR ^(D) Exceptional Student Learning Support Services

PAY BAND 'D'



PAY BANDS 'C' & 'B'

ACADEMICS STUDENT LEARNING



THE SCHOOL BOARD OF BROWARD
COUNTY, FLORIDA

THE SCHOOL BOARD OF BROWARD COUNTY, FL
2020-2021 ORGANIZATIONAL CHART

Funding from sources other than General Funds
 Funding: **C** Capital **FS** Food Service **Gr** Grant
G General **R** Referendum

SUPERINTENDENT OF SCHOOLS

CHIEF ACADEMIC OFFICER (S)

PAY BANDS 'S' & 'E'

DIRECTOR (D)
Elementary Learning

DIRECTOR (D)
Secondary Learning

DIRECTOR (D)
Innovative Learning

DIRECTOR (D)
Applied Learning

DIRECTOR (D)
Career, Technical, Adult,
Community Education

DIRECTOR (D)
Bilingual/ESOL

PAY BAND 'D'

CURRICULUM SUPERVISOR (C)
Language Arts (2)

CURRICULUM SUPERVISOR (C)
Language Arts (2)

CURRICULUM SUPERVISOR (C)
Library Media (C)

CURRICULUM SUPERVISOR (C)
Physical Education &
Educational Programs (C)

CURRICULUM SUPERVISOR (C)
Music & Performing Arts (C)

CURRICULUM SUPERVISOR (C)
Business Technology (C)

CURRICULUM SUPERVISOR (C)
Educational Leadership (C)

EDUCATION SPECIALIST I (25)
ESOL (2)

CURRICULUM SUPERVISOR (C)
Bilingual/ESOL (G-27%, Gr-73%)

CURRICULUM SUPERVISOR (C)
Math (2)

CURRICULUM SUPERVISOR (C)
Math (2)

CURRICULUM SUPERVISOR (C)
Gifted & Talented (C)

CURRICULUM SUPERVISOR (C)
STEM+C (C)

CURRICULUM SUPERVISOR (C)
Art (C)

CURRICULUM SUPERVISOR (C)
Health Science (C)

CURRICULUM SUPERVISOR (C)
Family & Consumer Science (C)

EDUCATION SPECIALIST I (25)
Dual Language/World Language (25)

CURRICULUM SUPERVISOR (C)
World Languages (C)

CURRICULUM SUPERVISOR (C)
Science (C)

CURRICULUM SUPERVISOR (C)
Science (C)

PROJECT MANAGER (27)
Technology & Instruction (27)

CURRICULUM SUPERVISOR (C)
Humanities (C)

CURRICULUM SUPERVISOR (C)
Technical Education/
Agriculture (C)

CURRICULUM SUPERVISOR (C)
Vocational Education
Industrial (C)

SPECIALIST (25)
Bilingual Outreach Program (25)

RESEARCH SPECIALIST (27)
(G-50%, Gr-50%) (27)

CURRICULUM SUPERVISOR (C)
Social Studies (C)

CURRICULUM SUPERVISOR (C)
Social Studies (C)

ANALYST (25)
Training (25)

ANALYST (25)
Instructional & Digital
Material (25)

PAY BANDS 'C' & 'B'

STUDENT SUPPORT INITIATIVES & RECOVERY



THE SCHOOL BOARD OF BROWARD COUNTY, FL
2020-2021 ORGANIZATIONAL CHART

Funding from sources other than General Funds

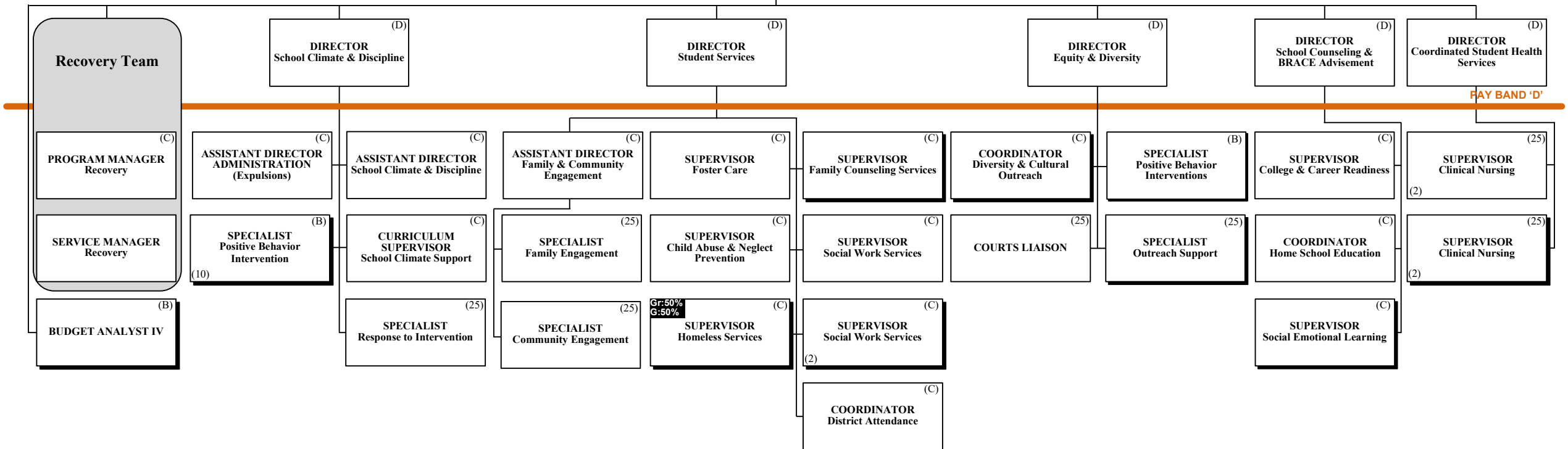
Funding: **C** Capital **FS** Food Service **Gr** Grant
G General **R** Referendum

THE SCHOOL BOARD OF BROWARD COUNTY, FLORIDA

SUPERINTENDENT OF SCHOOLS

CHIEF STUDENT SUPPORT INITIATIVES & RECOVERY (S)

PAY BANDS 'S' & 'E'



PAY BAND 'D'

PAY BANDS 'C' & 'B'

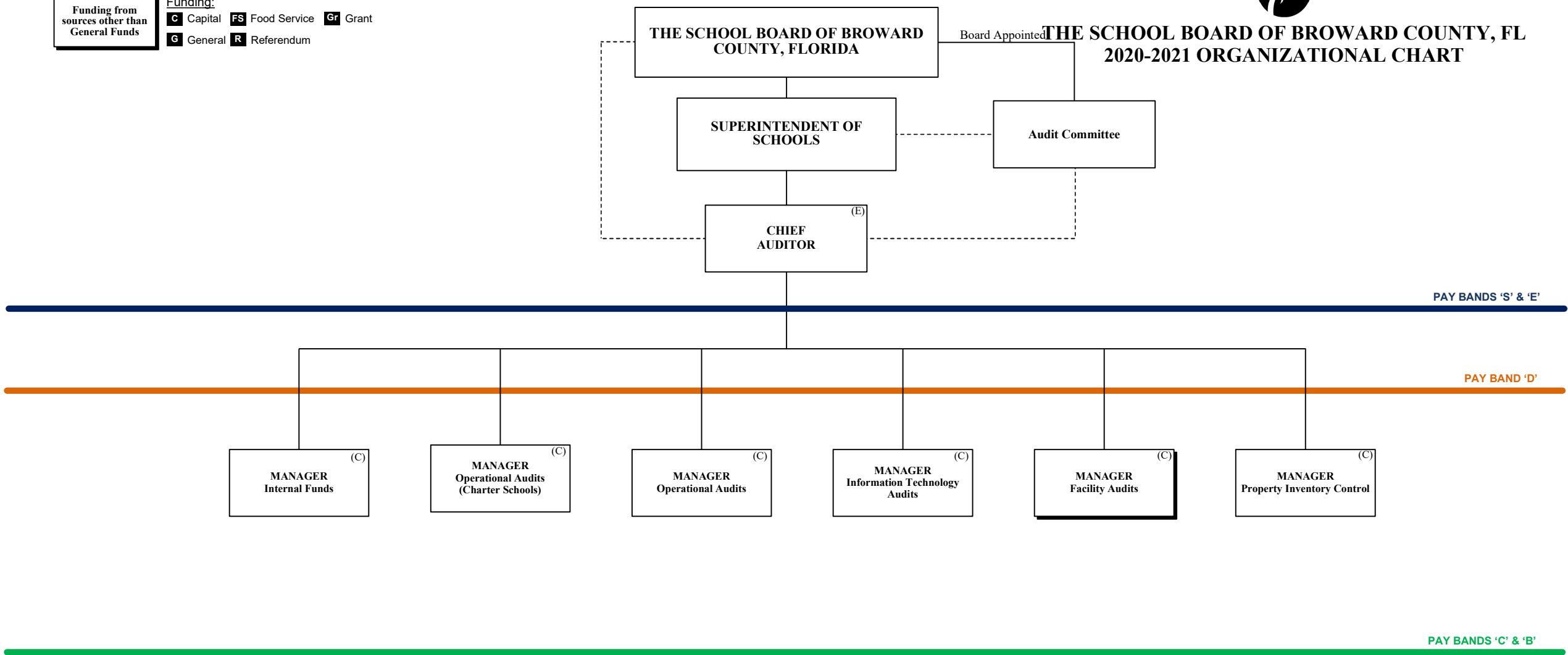


AUDITOR

Funding from sources other than General Funds

Funding: **C** Capital **FS** Food Service **Gr** Grant
G General **R** Referendum

THE SCHOOL BOARD OF BROWARD COUNTY, FL
 2020-2021 ORGANIZATIONAL CHART



CAPITAL PROGRAMS



THE SCHOOL BOARD OF BROWARD COUNTY, FL 2020-2021 ORGANIZATIONAL CHART

Funding from sources other than General Funds

Funding: **C** Capital **FS** Food Service **Gr** Grant
G General **R** Referendum

THE SCHOOL BOARD OF BROWARD COUNTY, FLORIDA

SUPERINTENDENT OF SCHOOLS

EXECUTIVE DIRECTOR
Capital Programs (E)

PAY BANDS 'S' & 'E'

DIRECTOR
Construction (D)

DIRECTOR
Program Controls (D)

DIRECTOR
Pre-Construction (D)

PAY BAND 'D'

MANAGER
Construction (C)

MANAGER
Construction (C)
(2)

MANAGER
Database Administration (27)

MANAGER
Mechanical Engineering (C)

MANAGER
ADA Accessibility (C)

PROJECT
MANAGER III (27)

MANAGER
Architectural Engineering (C)

SPECIALIST
ADA Accessibility (25)

MANAGER
Electrical Engineering (C)

PROJECT
MANAGER III (27)

ESMAB PAY BANDS 'C' & 'B'
TSP PAY GRADES 25-28

FINANCIAL MANAGEMENT



THE SCHOOL BOARD OF BROWARD COUNTY, FL 2020-2021 ORGANIZATIONAL CHART

Funding from sources other than General Funds

Funding: **C** Capital **FS** Food Service **Gr** Grant
G General **R** Referendum

THE SCHOOL BOARD OF BROWARD COUNTY, FLORIDA

SUPERINTENDENT OF SCHOOLS

C-20%
G-80% **(S)**
CHIEF FINANCIAL OFFICER (CFO)

PAY BANDS 'S' & 'E'

(D) DIRECTOR Accounting & Financial Reporting

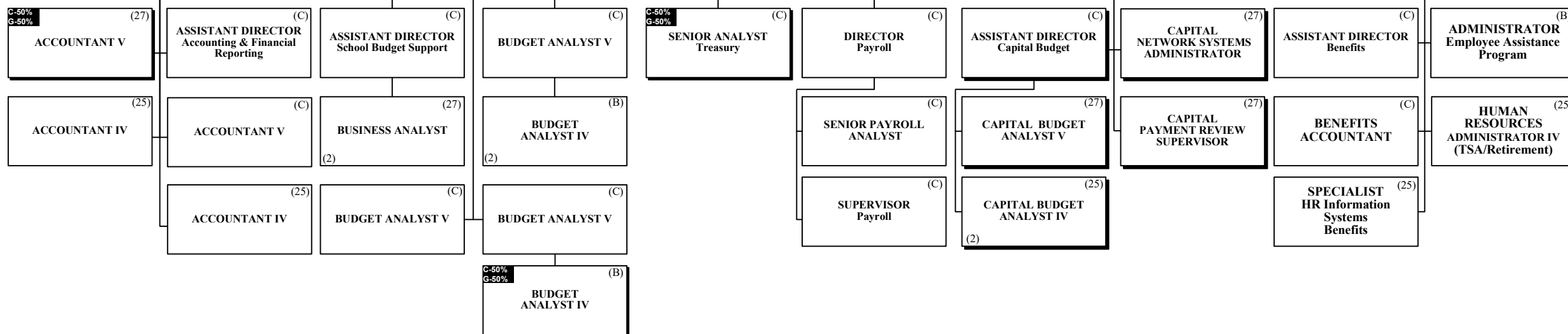
(D) DIRECTOR Budget

C-50%
G-50% **(D)** TREASURER

(D) DIRECTOR Capital Budget

(D) DIRECTOR Benefits & Employment Services

PAY BAND 'D'



ESMAB PAY BANDS 'C' & 'B'
TSP PAY GRADES 25-28

HUMAN RESOURCES & EQUITY

THE SCHOOL BOARD OF BROWARD COUNTY, FLORIDA



THE SCHOOL BOARD OF BROWARD COUNTY, FL
2020-2021 ORGANIZATIONAL CHART

Funding from sources other than General Funds

Funding: **C** Capital **FS** Food Service **Gr** Grant
G General **R** Referendum

SUPERINTENDENT OF SCHOOLS

CHIEF HUMAN RESOURCES & EQUITY OFFICER (S)

Collective Bargaining

PAY BANDS 'S' & 'E'

DIRECTOR (D)
Employee Evaluations

DIRECTOR (D)
Talent Acquisition & Operations (Instructional)

DIRECTOR (D)
Talent Acquisition & Operations (Non-Instructional)

DIRECTOR (D)
Employee & Labor Relations

DIRECTOR (D)
Compensation & HR Support Services

DIRECTOR (D)
EEO/ADA Compliance

PAY BAND 'D'

COORDINATOR (C)
Evaluation (3)

RESEARCH SPECIALIST (27)

MANAGER (C)
Certification/Incentives

SPECIALIST (25)
HR Information Systems

COORDINATOR (27)
Non-Instructional Development

MANAGER (C)
Employee & Labor Relations

HR SPECIALIST (2)

MANAGER (C)
Employee & Labor Relations

SPECIALIST (2)
Employee & Labor Relations (C)

MANAGER (C)
HR Support Services

ESMAB PAY BANDS 'C' & 'B'
TSP/PBA PAY GRADES 25-28

INFORMATION & TECHNOLOGY



THE SCHOOL BOARD OF BROWARD COUNTY, FL 2020-2021 ORGANIZATIONAL CHART

Funding from sources other than General Funds

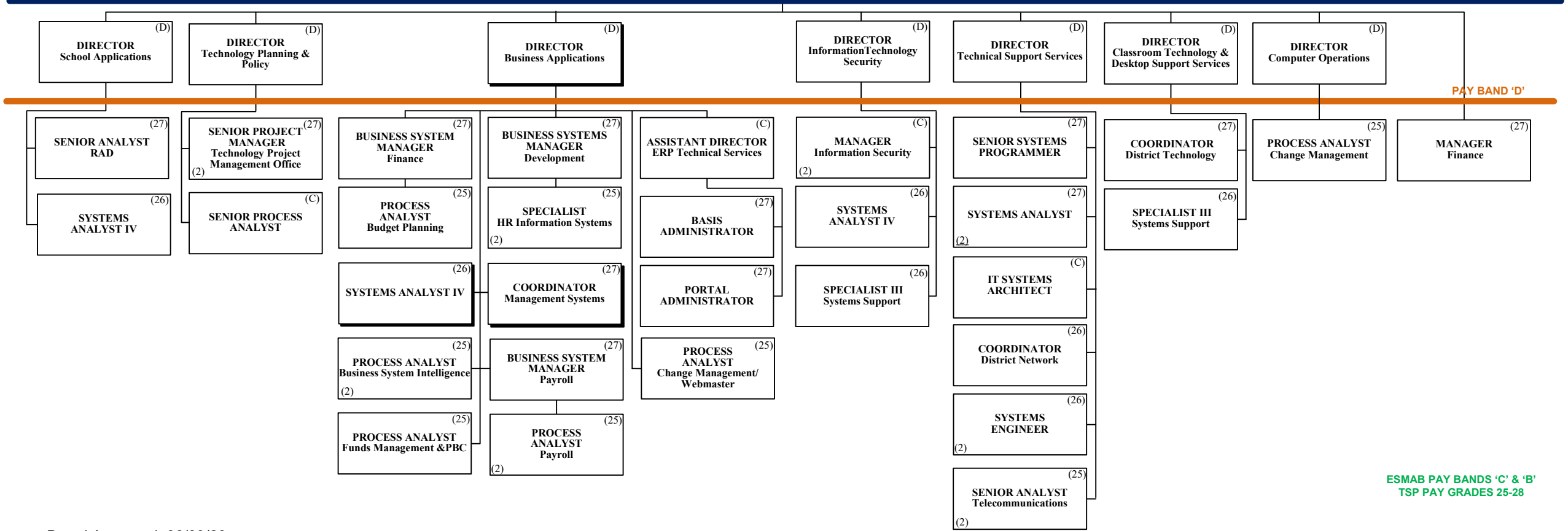
Funding: **C** Capital **FS** Food Service **Gr** Grant
G General **R** Referendum

THE SCHOOL BOARD OF BROWARD COUNTY, FLORIDA

SUPERINTENDENT OF SCHOOLS

CHIEF INFORMATION OFFICER (S)

PAY BANDS 'S' & 'E'



PAY BAND 'D'

ESMAB PAY BANDS 'C' & 'B'
TSP PAY GRADES 25-28



PORTFOLIO SERVICES

**THE SCHOOL BOARD OF BROWARD COUNTY, FL
2020-2021 ORGANIZATIONAL CHART**

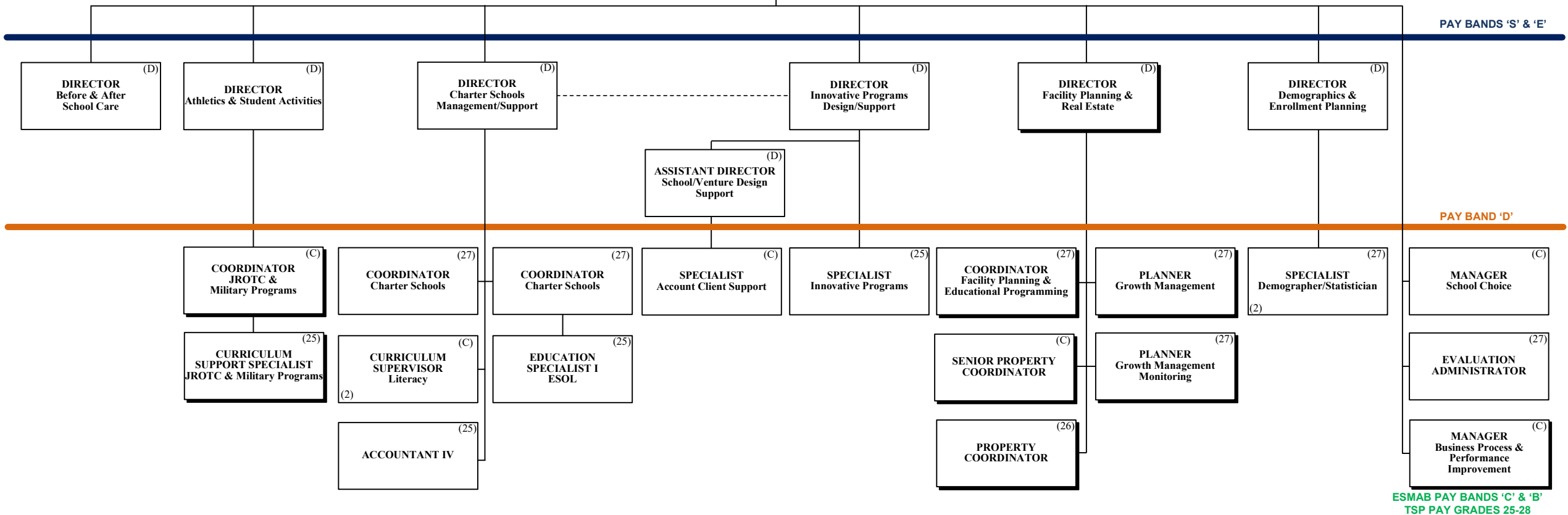
Funding from sources other than General Funds

Funding: **C** Capital **FS** Food Service **Gr** Grant
G General **R** Referendum

THE SCHOOL BOARD OF BROWARD COUNTY, FLORIDA

SUPERINTENDENT OF SCHOOLS

CHIEF PORTFOLIO SERVICES OFFICER (E)



ESMAB PAY BANDS 'C' & 'B'
TSP PAY GRADES 25-28

Funding from sources other than General Funds

Funding:

C Capital **FS** Food Service **Gr** Grant
G General **R** Referendum



**THE SCHOOL BOARD OF BROWARD COUNTY, FL
 2020-2021 ORGANIZATIONAL CHART**

COMMUNICATIONS

THE SCHOOL BOARD OF BROWARD COUNTY, FLORIDA

SUPERINTENDENT OF SCHOOLS

CHIEF COMMUNICATIONS OFFICER (E)

PAY BANDS 'S' & 'E'

DIRECTOR/ GENERAL MANAGER Broward Educational Communication Network (BECON) (D)

DIRECTOR Marketing & Strategic Communications (D)

PAY BAND 'D'

BECON STATION MANAGER (28)

MANAGER II Engineering (26)

MANAGER Media & Community Relations (C)

COORDINATOR District Community Relations (27)

COORDINATOR BECON Public Relations & Fundraising (26)

MANAGER II Production (26)

SPECIALIST Communications (25) (2)

MANAGER Graphics (26)

MANAGER II School Services (B)

ESMAB PAY BANDS 'C' & 'B'
 TSP PAY GRADES 25-28

CHIEF OF STAFF



THE SCHOOL BOARD OF BROWARD COUNTY, FL 2020-2021 ORGANIZATIONAL CHART

Funding from sources other than General Funds

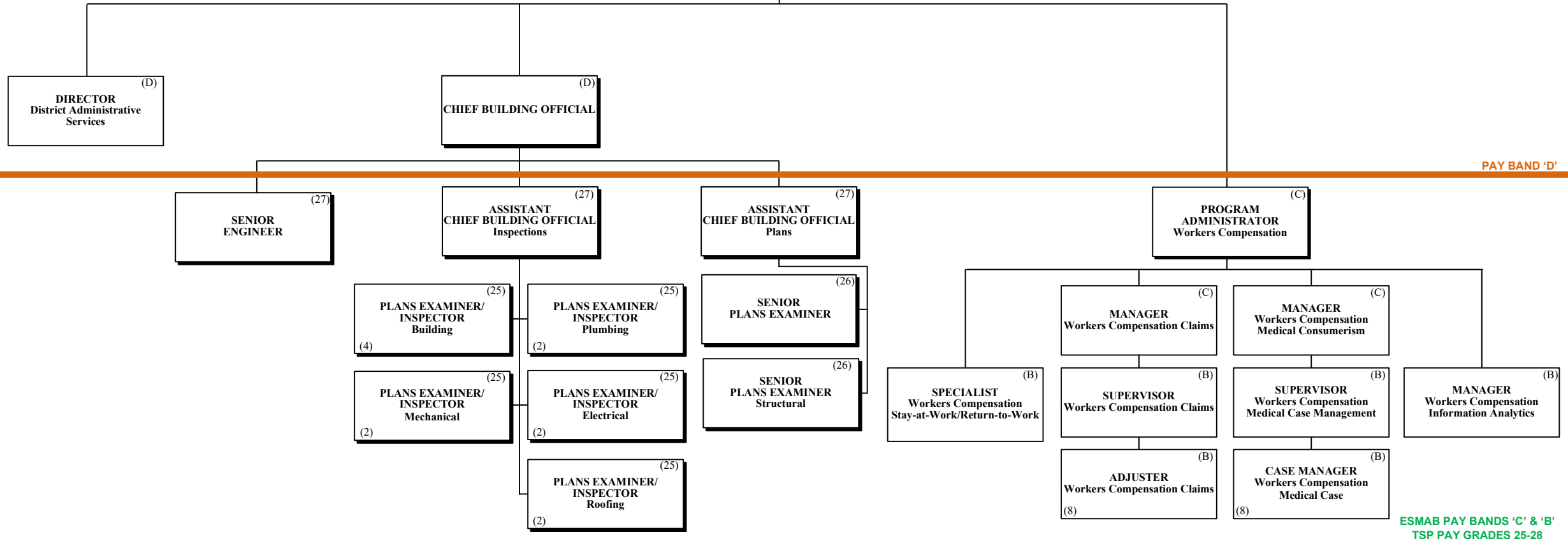
Funding: **C** Capital **FS** Food Service **Gr** Grant
G General **R** Referendum

THE SCHOOL BOARD OF BROWARD COUNTY, FLORIDA

SUPERINTENDENT OF SCHOOLS

CHIEF OF STAFF (S)

PAY BANDS 'S' & 'E'



PAY BAND 'D'

ESMAB PAY BANDS 'C' & 'B'
TSP PAY GRADES 25-28

SAFETY, SECURITY & EMERGENCY PREPAREDNESS

THE SCHOOL BOARD OF BROWARD
COUNTY, FLORIDA



THE SCHOOL BOARD OF BROWARD COUNTY, FL
2020-2021 ORGANIZATIONAL CHART

Funding from sources other than General Funds

Funding:
C Capital **FS** Food Service **Gr** Grant
G General **R** Referendum

SUPERINTENDENT OF SCHOOLS

CHIEF
SAFETY & SECURITY
OFFICER (S)

EXECUTIVE DIRECTOR (E)
Enterprise Risk &
Emergency Preparedness

PAY BANDS 'S' & 'E'

DIRECTOR (D)
Risk Management

DIRECTOR (D)
School Security
Support Services

C DIRECTOR (D)
Environmental Health & Safety

DIRECTOR (D)
Safety & Security Operations

CHIEF (D)
Special Investigative Unit (SIU)

C CHIEF FIRE OFFICIAL (D)

PAY BAND 'D'

BUDGET ANALYST V (C)

SENIOR DATA ANALYST (27)

MANAGER (B)
Emergency Management

PROJECT MANAGER (25)
Safety, Security & Emergency
Preparedness

PERSONNEL ADMINISTRATOR (C)
Training/Clearance

COORDINATOR (25)
School Safety

MANAGER (25)
District Security
Operations Center

C MANAGER (27)
Environmental Conservation/
Utility Management

C SPECIALIST IV (25)
Building Control

C SPECIALIST (25)
Safety Training

C COORDINATOR (B)
Health & Safety

C COORDINATOR (C)
Local Education Agency (LEA)

C PROJECT MANAGER (25)
Occupational Health/
Environmental Control

C PROJECT MANAGER I (25)

AREA MANAGER (25)
Security (7)

R AREA MANAGER (25)
Security (9)

LIEUTENANT (C)
(2)

DETECTIVE (25)
SIU (19)

C PLANS EXAMINER/
INSPECTOR (25)
Fire (3)

ESMAB PAY BANDS 'C' & 'B'
TSP PAY GRADES 25-28

STRATEGY & OPERATIONS



THE SCHOOL BOARD OF BROWARD COUNTY, FL 2020-2021 ORGANIZATIONAL CHART

Funding from sources other than General Funds

Funding: **C** Capital **FS** Food Service **Gr** Grant
G General **R** Referendum

THE SCHOOL BOARD OF BROWARD COUNTY, FLORIDA

SUPERINTENDENT OF SCHOOLS

CHIEF STRATEGY & OPERATIONS OFFICER (S)

EXECUTIVE DIRECTOR Strategic Initiative Management (E)

PAY BANDS 'S' & 'E'

DIRECTOR Grants Administration (D)

DIRECTOR Business Support Center (D)

DIRECTOR Performance Management (D)

DIRECTOR Program Evaluation (D)

PAY BAND 'D'

SENIOR MANAGER Grant Programs (C)

MANAGER Grant Programs Oversight (26)
(2)

GRANTS ADMINISTRATOR Accountability & Reporting (25)

MANAGER Budget (27)

BUSINESS ANALYST (27)
(2)

SUPERVISOR I Printing Services (26)

COORDINATOR Performance Management (C)

COORDINATOR Strategic Management (C)

EVALUATION ADMINISTRATOR (27)

ESMAB PAY BANDS 'C' & 'B'
TSP PAY GRADES 25-28



STRATEGY & OPERATIONS

THE SCHOOL BOARD OF BROWARD COUNTY, FLORIDA

THE SCHOOL BOARD OF BROWARD COUNTY, FL
2020-2021 ORGANIZATIONAL CHART

Funding from sources other than General Funds

Funding: C Capital FS Food Service Gr Grant G General R Referendum

SUPERINTENDENT OF SCHOOLS

CHIEF STRATEGY & OPERATIONS OFFICER (S)

EXECUTIVE DIRECTOR Student Transportation & Fleet Services (E)

PAY BANDS 'S' & 'E'

DIRECTOR Food & Nutrition Services (D)

DIRECTOR Procurement & Warehousing Services (D)

OFFICER Economic Development & Diversity Compliance (D)
C-50% G-50%

DIRECTOR Student Transportation & Fleet Services (D)

PAY BAND 'D'

ASSISTANT DIRECTOR Food & Nutrition Services (C)

COORDINATOR Food & Nutrition Services (C)
(2)

MANAGER Strategic Sourcing (C)

MANAGER Construction Sourcing (C)

ASSISTANT DIRECTOR Procurement Compliance (C)

MANAGER Supplier Diversity & Outreach Program (C)
C-50% G-50%

ASSISTANT DIRECTOR Transportation Support Services (C)

MANAGER I Transportation Terminal (B)
(2)

MANAGER I Vehicle Maintenance (C)

MANAGER Centralized Routing (C)

AREA SUPERVISOR Food & Nutrition Services (B)
(11)

FINANCE MANAGER Food & Nutrition Services (C)

MANAGER Warehousing Services (B)

PURCHASING AGENT IV Construction (25)

SENIOR PROCESS ANALYST (C)

COORDINATOR Supplier Diversity & Outreach Program (26)

MANAGER II Transportation Terminal (C)
(2)

SUPERVISOR Special Needs Transportation (25)

SUPERVISOR Vehicle Maintenance (25)
(2)

DATA ANALYST Transportation (25)

AREA SUPERVISOR Special Programs Food & Nutrition Services (B)
(2)

PROGRAM MANAGER Nutrition, Education & Training (26)

MANAGER Warehousing Services (B)

PURCHASING AGENT IV Construction (25)

SENIOR PROCESS ANALYST (C)

COORDINATOR Supplier Diversity & Outreach Program (Compliance) (26)
C-50% G-50%

ACCOUNTANT V (27)

SUPERVISOR Food & Nutrition Services Information Systems (B)

SUPERVISOR Food & Nutrition Services Equipment & Supplies (25)

MANAGER Warehousing Services (B)

PURCHASING AGENT IV Construction (25)

PROCESS ANALYST Procurement & Warehousing Services (25)
(2)

PURCHASING AGENT IV (25)

Funding from sources other than General Funds

Funding: C Capital FS Food Service Gr Grant G General R Referendum



STRATEGY & OPERATIONS

THE SCHOOL BOARD OF BROWARD COUNTY, FLORIDA

**THE SCHOOL BOARD OF BROWARD COUNTY, FL
2020-2021 ORGANIZATIONAL CHART**

SUPERINTENDENT OF SCHOOLS

CHIEF STRATEGY & OPERATIONS OFFICER (S)

EXECUTIVE DIRECTOR Physical Plant Operations (E)

PAY BANDS 'S' & 'E'

DIRECTOR Physical Plant Operations (D)
C-70%
G-30%

PAY BAND 'D'

MANAGER Custodial/Grounds (C)
C-65%
G-45%

AREA MANAGER Trades Zone 1 (C)
C-70%
G-30%

AREA MANAGER Trades Zone 3 (C)
C-70%
G-30%

MANAGER Facilities Support Services (C)

MANAGER PPO Finance (C)

SENIOR PROCESS ANALYST (C)
C

MANAGER Grounds (26)
C-65%
G-45%

AREA MANAGER Trades Zone 2 (C)
C-70%
G-30%

AREA MANAGER Trades District (C)
C-70%
G-30%

SUPERVISOR Work Flow/Labor Utilization (25)
C-65%
G-45%

SUPERVISOR Planning & Scheduling (25)
C-65%
G-45%

TRADE SUPERVISOR (25)
(9)