



THE SCHOOL BOARD OF BROWARD COUNTY, FLORIDA
2020-2021 ORGANIZATIONAL CHART

Board Approved: 06/09/20
Revised: 02/09/21



**THE SCHOOL BOARD OF BROWARD COUNTY, FLORIDA
2020-2021 ORGANIZATIONAL CHART**

School Board Appointed Committees & Public Stakeholders	1
Superintendent of Schools	2
General Counsel	3
School Performance & Accountability	4
Academics	5-7
Learning & Development Support	5
Exceptional Student Learning Support	6
Student Learning	7
Student Support Initiatives & Recovery	8
Auditor	9
Facilities	10
Financial Management	11
Human Resources & Equity	12
Information & Technology	13
Portfolio Services	14
Communications	15
Chief of Staff	16
Safety, Security & Emergency Preparedness	17
Strategy & Operations	18-20
Business Support Center, Grants Administration, Strategic Implementation & Accountability	18
Food & Nutrition Services, Procurement & Warehousing Services, Supplier Diversity & Outreach, Student Transportation & Fleet Services	19
Physical Plant Operations	20



**THE SCHOOL BOARD OF BROWARD COUNTY, FL
2020-2021 ORGANIZATIONAL CHART**

**SCHOOL BOARD APPOINTED COMMITTEES &
PUBLIC STAKEHOLDERS**

Funding:
Funding from sources other than General Funds
C Capital **FS** Food Service **Gr** Grant
G General **R** Referendum

**BROWARD COUNTY
COMMUNITY**

**THE SCHOOL BOARD OF
BROWARD COUNTY, FLORIDA**

School Board Appointed Committees

School Board Appointed Committees

- Audit Committee
- District Advisory Council
- Diversity Committee
- ESE Advisory Council
- Facilities Task Force

- Gifted Advisory Council
- Human Relations Committee
- Student Advisor
- Supplier Diversity & Outreach Advisory
- Technology Advisory Committee

**SUPERINTENDENT
OF SCHOOLS**

PUBLIC STAKEHOLDERS

- Bond Oversight Committee
- ESOL Leadership Council
- Parent/Community Involvement Task Force
- Parent Teacher Association (PTA)
- Qual. Selection & Eval. Comm. (QSEC)
- Superintendent's Insurance Advisory Committee
- Teacher Advisory Council
- Wellness & Learning Support Committee

Funding from sources other than General Funds

Funding:
C Capital **FS** Food Service **Gr** Grant
G General **R** Referendum



**THE SCHOOL BOARD OF BROWARD COUNTY, FL
 2020-2021 ORGANIZATIONAL CHART**

SUPERINTENDENT

**BROWARD COUNTY
 COMMUNITY**

**THE SCHOOL BOARD OF
 BROWARD COUNTY, FLORIDA**

GENERAL COUNSEL

Page 3

**SUPERINTENDENT
 OF SCHOOLS**

Collective Bargaining Team

CHIEF OF STAFF (S)

Page 16

**DIRECTOR
 Legislative Affairs** (D)

**COORDINATOR
 Governmental Affairs** (27)

**CHIEF
 SAFETY & SECURITY
 OFFICER** (S)

Page 17

**CHIEF SCHOOL
 PERFORMANCE &
 ACCOUNTABILITY
 OFFICER**

Page 4

**CHIEF ACADEMIC
 OFFICER**

Pages 5-7

**CHIEF
 STUDENT SUPPORT
 INITIATIVES**

Page 8

Recovery Team

CHIEF AUDITOR

Page 9

**CHIEF FACILITIES
 OFFICER**

Page 10

**CHIEF FINANCIAL
 OFFICER**

Page 11

**CHIEF HUMAN
 RESOURCES & EQUITY
 OFFICER**

Page 12

**CHIEF
 INFORMATION
 OFFICER**

Page 13

**CHIEF PORTFOLIO
 SERVICES OFFICER**

Page 14

**CHIEF
 COMMUNICATIONS
 OFFICER**

Page 15

**CHIEF STRATEGY &
 OPERATIONS OFFICER**

Pages 18-19

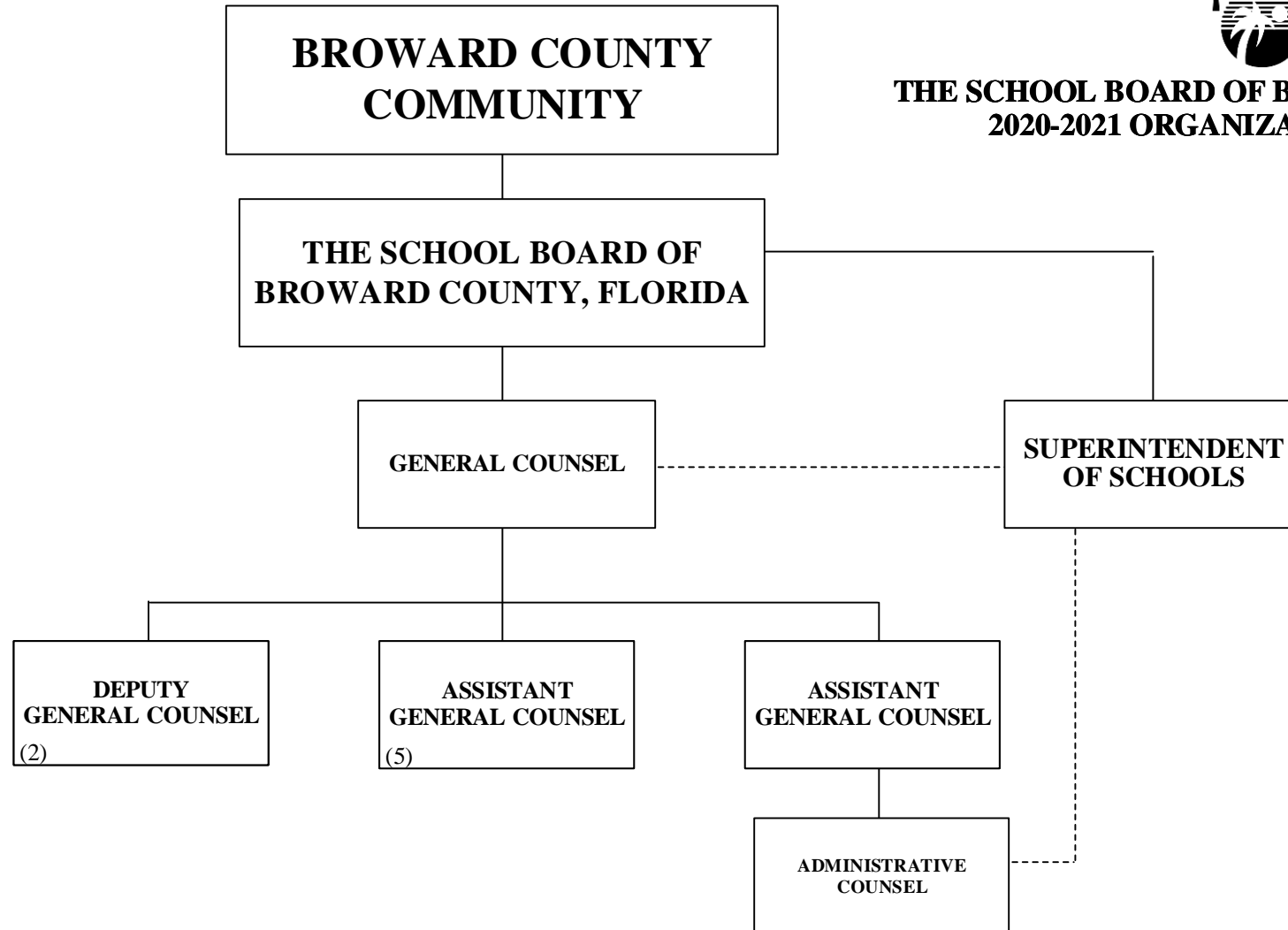
GENERAL COUNSEL



**THE SCHOOL BOARD OF BROWARD COUNTY, FL
2020-2021 ORGANIZATIONAL CHART**

Funding from sources other than General Funds

Funding:
C Capital **FS** Food Service **Gr** Grant
G General **R** Referendum



Funding from sources other than General Funds

Funding:

- C** Capital
- FS** Food Service
- Gr** Grant
- G** General
- R** Referendum

SCHOOL PERFORMANCE & ACCOUNTABILITY OSPA



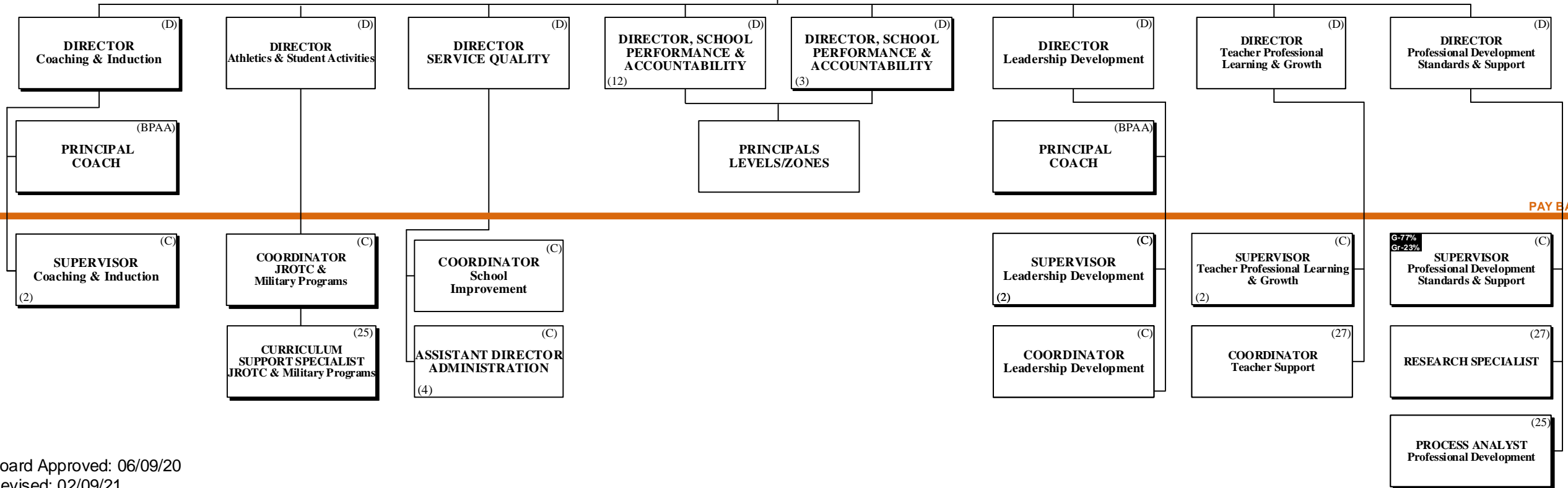
THE SCHOOL BOARD OF BROWARD COUNTY, FLORIDA

**THE SCHOOL BOARD OF BROWARD COUNTY, FL
2020-2021 ORGANIZATIONAL CHART**

SUPERINTENDENT OF SCHOOLS

CHIEF SCHOOL PERFORMANCE & ACCOUNTABILITY OFFICER (S)

PAY BANDS 'S' & 'E'



PAY BAND 'D'

PAY BANDS 'C' & 'B'

Board Approved: 06/09/20
Revised: 02/09/21

ACADEMICS LEARNING & DEVELOPMENT SUPPORT



THE SCHOOL BOARD OF BROWARD COUNTY, FL 2020-2021 ORGANIZATIONAL CHART

Funding:
 Funding from sources other than General Funds: **C** Capital **FS** Food Service **Gr** Grant
G General **R** Referendum

THE SCHOOL BOARD OF BROWARD COUNTY, FLORIDA

SUPERINTENDENT OF SCHOOLS

CHIEF ACADEMIC OFFICER (S)

EXECUTIVE DIRECTOR (E)
Early Learning & Language Acquisition

PAY BANDS 'S' & 'E'

G-10%
Gr-90%
DIRECTOR (D)
Head Start/Early Intervention

DIRECTOR (D)
Literacy

DIRECTOR (D)
Student Assessment & Research

G-10%
Gr-90%
DIRECTOR (D)
Title I, Migrant & Special Programs

DIRECTOR (D)
Innovative Programs Design/Support

PAY BAND 'D'

CURRICULUM SUPERVISOR (C)
Head Start/Early Head Start

CURRICULUM SUPERVISOR (C)
VPK Programs

CURRICULUM SUPERVISOR (C)
School Readiness

CURRICULUM SUPERVISOR (C)
School Readiness

RESEARCH SPECIALIST (27)

RESEARCH SPECIALIST (27)
(2)

SPECIALIST (25)
Testing
(2)

SPECIALIST (25)
Title I
(5)

SPECIALIST (25)
(ESEA Title I)
Basic Schoolwide Project & Program Improvement

GRANT ADMINISTRATOR SPECIALIST (25)

ASSISTANT DIRECTOR (D)
School/Venture Design Support

SPECIALIST (C)
Account Client Support

SPECIALIST (25)
Innovative Programs

SPECIALIST (B)
Head Start Family Services

SPECIALIST (B)
Head Start/Early Head Start

PAY BANDS 'C' & 'B'

ACADEMICS EXCEPTIONAL STUDENT LEARNING SUPPORT



THE SCHOOL BOARD OF BROWARD COUNTY, FL 2020-2021 ORGANIZATIONAL CHART

Funding from sources other than General Funds

Funding:
C Capital **FS** Food Service **Gr** Grant
G General **R** Referendum

THE SCHOOL BOARD OF BROWARD COUNTY, FLORIDA

SUPERINTENDENT OF SCHOOLS

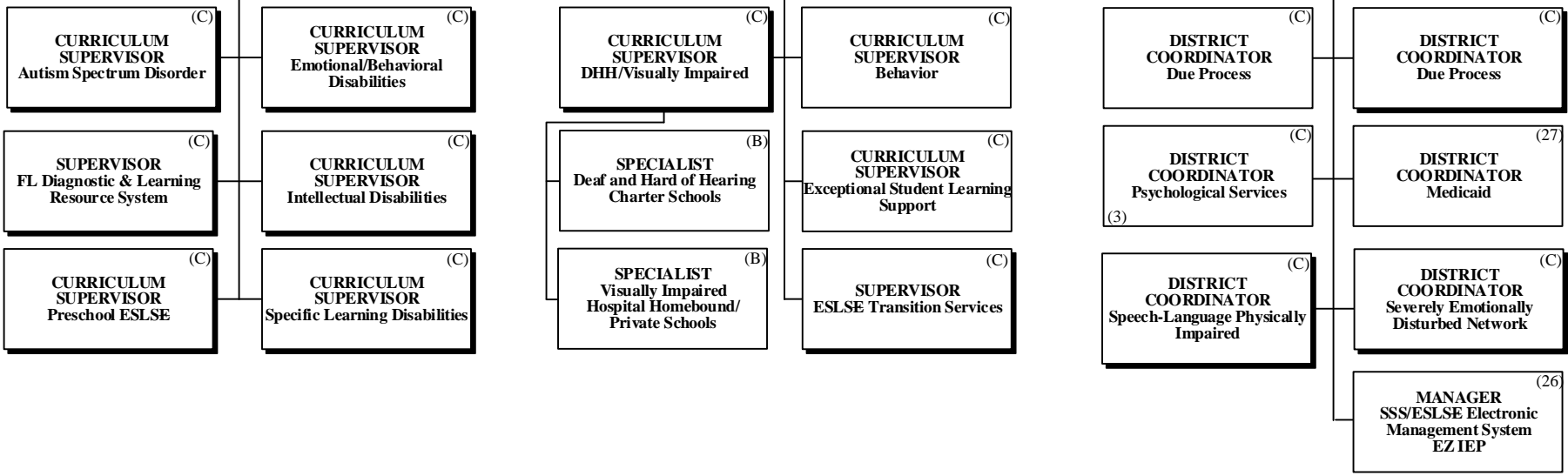
CHIEF ACADEMIC OFFICER ^(S)

EXECUTIVE DIRECTOR
Exceptional Student Learning Support ^(E)

PAY BANDS 'S' & 'E'

DIRECTOR ^(D) Exceptional Student Learning Support (Pre-K/Elementary)
 DIRECTOR ^(D) Exceptional Student Learning Support (Secondary)
 DIRECTOR ^(D) Exceptional Student Learning Support Services

PAY BAND 'D'



PAY BANDS 'C' & 'B'

ACADEMICS STUDENT LEARNING



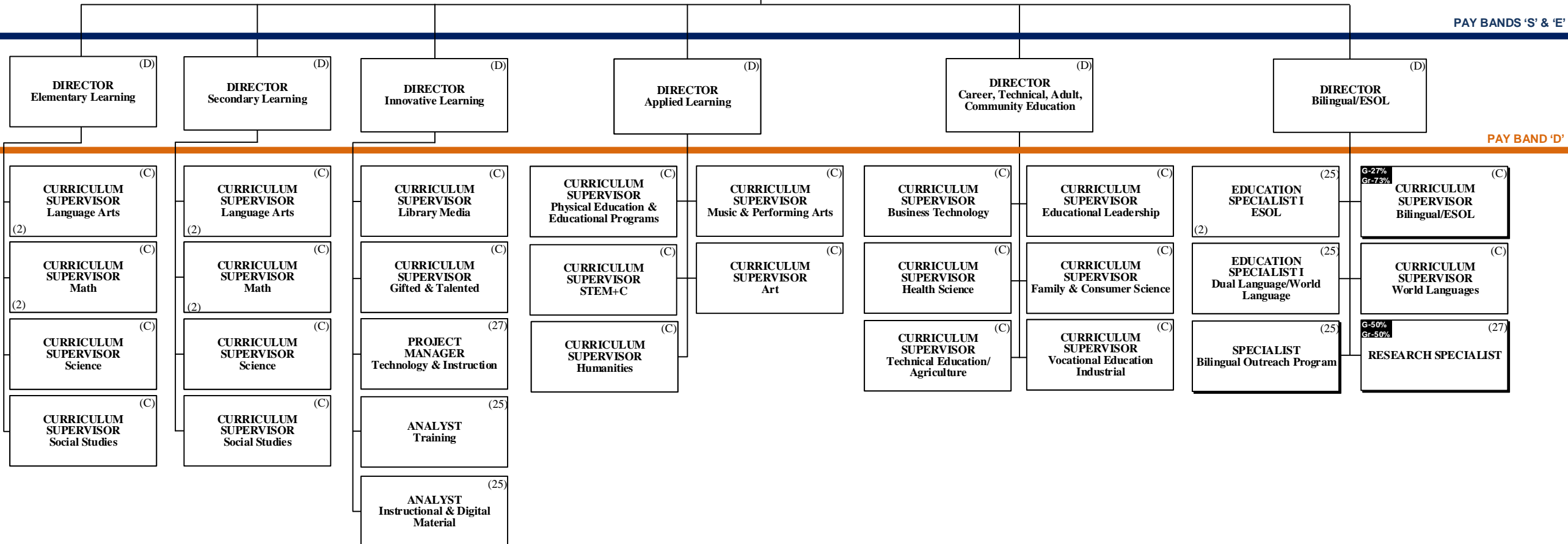
THE SCHOOL BOARD OF BROWARD
COUNTY, FLORIDA

**THE SCHOOL BOARD OF BROWARD COUNTY, FL
2020-2021 ORGANIZATIONAL CHART**

Funding:
Funding from sources other than General Funds
C Capital **FS** Food Service **Gr** Grant
G General **R** Referendum

SUPERINTENDENT OF SCHOOLS

CHIEF
ACADEMIC
OFFICER (S)



PAY BANDS 'S' & 'E'

PAY BAND 'D'

PAY BANDS 'C' & 'B'

STUDENT SUPPORT INITIATIVES & RECOVERY



THE SCHOOL BOARD OF BROWARD COUNTY, FL 2020-2021 ORGANIZATIONAL CHART

Funding from sources other than General Funds

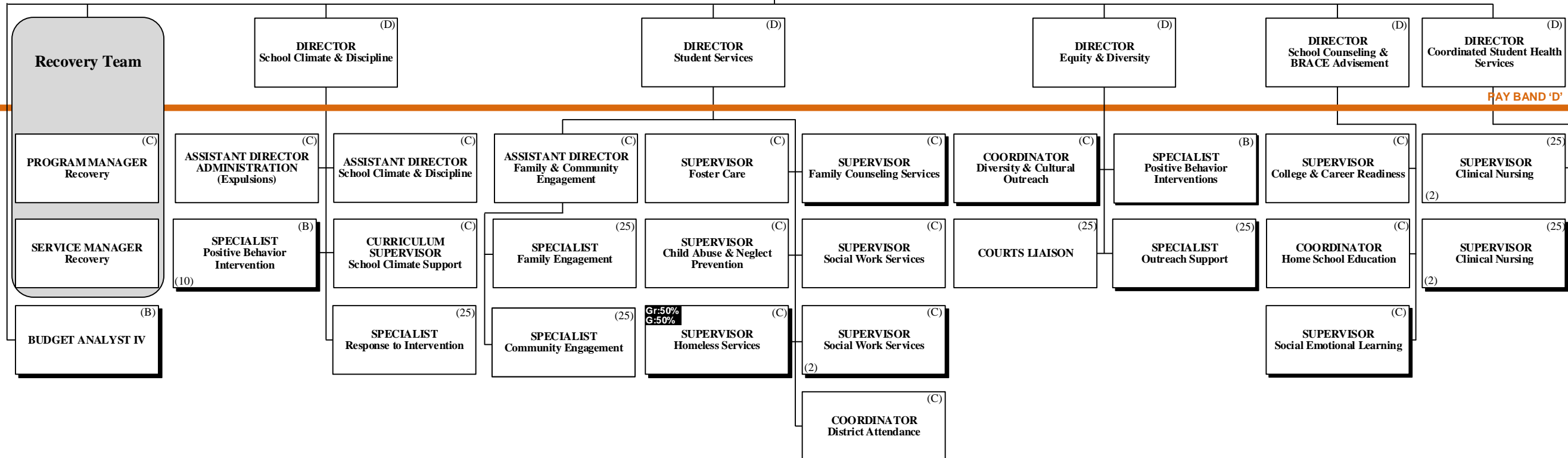
Funding:
C Capital **FS** Food Service **Gr** Grant
G General **R** Referendum

THE SCHOOL BOARD OF BROWARD COUNTY, FLORIDA

SUPERINTENDENT OF SCHOOLS

CHIEF STUDENT SUPPORT INITIATIVES & RECOVERY (S)

PAY BANDS 'S' & 'E'



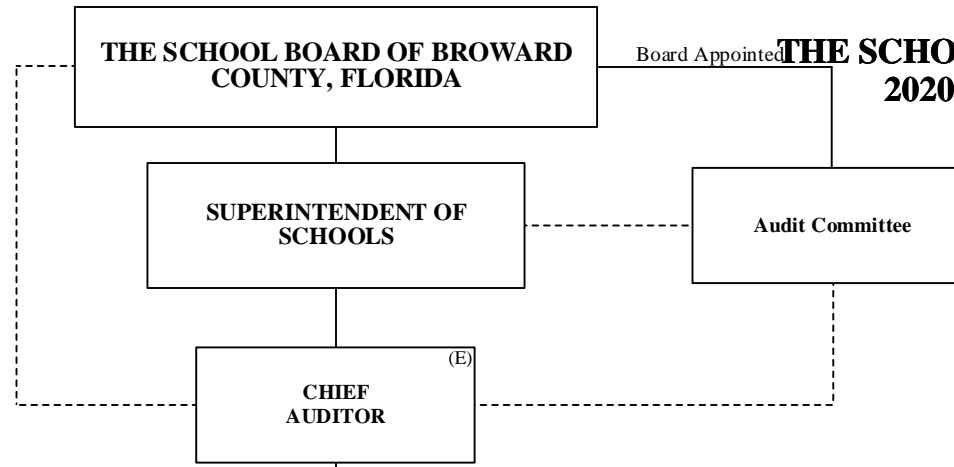
PAY BANDS 'C' & 'E'



**THE SCHOOL BOARD OF BROWARD COUNTY, FL
2020-2021 ORGANIZATIONAL CHART**

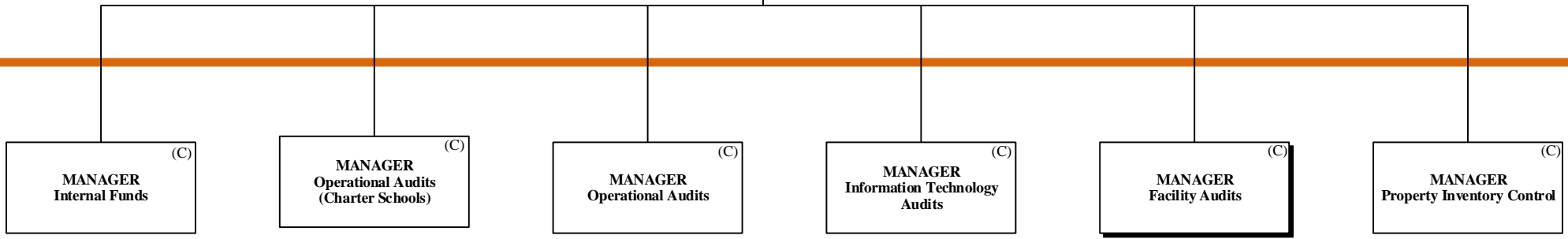
AUDITOR

Funding from sources other than General Funds
Funding:
C Capital **FS** Food Service **Gr** Grant
G General **R** Referendum



PAY BANDS 'S' & 'E'

PAY BAND 'D'



PAY BANDS 'C' & 'B'

FACILITIES



THE SCHOOL BOARD OF BROWARD COUNTY, FLORIDA

THE SCHOOL BOARD OF BROWARD COUNTY, FL
2020-2021 ORGANIZATIONAL CHART

Funding from sources other than General Funds

Funding:
C Capital **FS** Food Service **Gr** Grant
G General **R** Referendum

SUPERINTENDENT OF SCHOOLS

CHIEF FACILITIES OFFICER (S)

EXECUTIVE DIRECTOR Capital Programs (E)

PAY BANDS 'S' & 'E'

DIRECTOR Construction (D)

DIRECTOR Program Controls (D)

DIRECTOR Pre-Construction (D)

PAY BAND 'D'

MANAGER Construction (C)

MANAGER Construction (C)
(2)

MANAGER Database Administration (27)

MANAGER Mechanical Engineering (C)

MANAGER ADA Accessibility (C)

PROJECT MANAGER III (27)

MANAGER Architectural Engineering (C)

SPECIALIST ADA Accessibility (25)

MANAGER Electrical Engineering (C)

PROJECT MANAGER III (27)

ESMAB PAY BANDS 'C' & 'B'
TSP PAY GRADES 25-28

FINANCIAL MANAGEMENT



THE SCHOOL BOARD OF BROWARD COUNTY, FL 2020-2021 ORGANIZATIONAL CHART

THE SCHOOL BOARD OF BROWARD COUNTY, FLORIDA

SUPERINTENDENT OF SCHOOLS

C-20%
G-80%
CHIEF FINANCIAL OFFICER (CFO) (S)

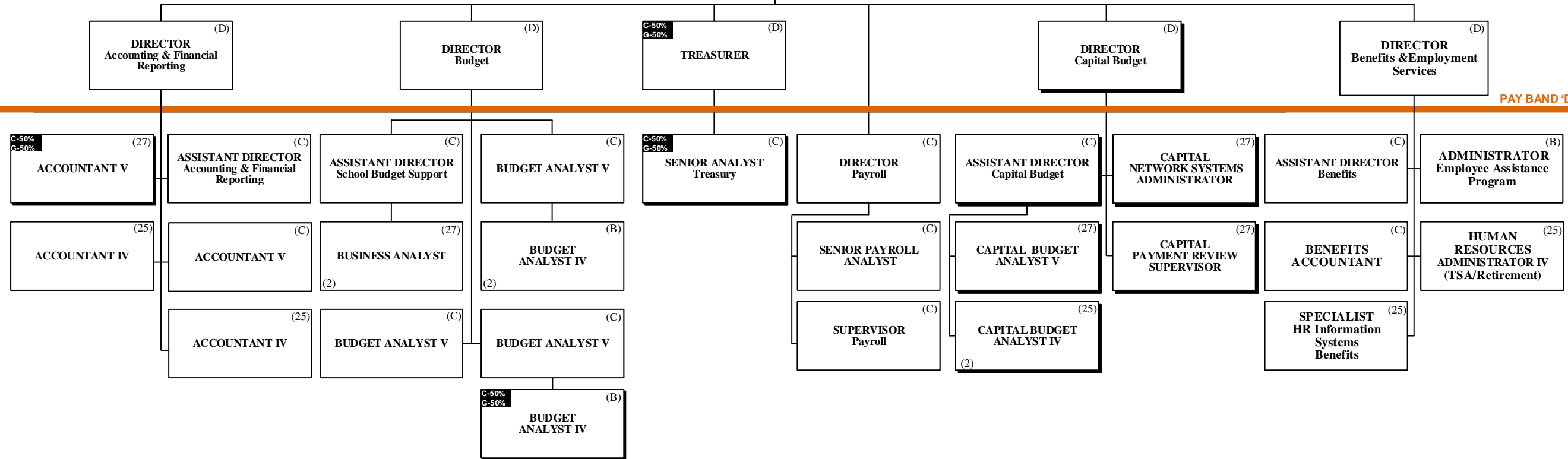
Funding from sources other than General Funds

Funding:
C Capital **FS** Food Service **Gr** Grant
G General **R** Referendum

PAY BANDS 'S' & 'E'

PAY BAND 'D'

ESMAB PAY BANDS 'C' & 'B'
TSP PAY GRADES 25-28



HUMAN RESOURCES & EQUITY

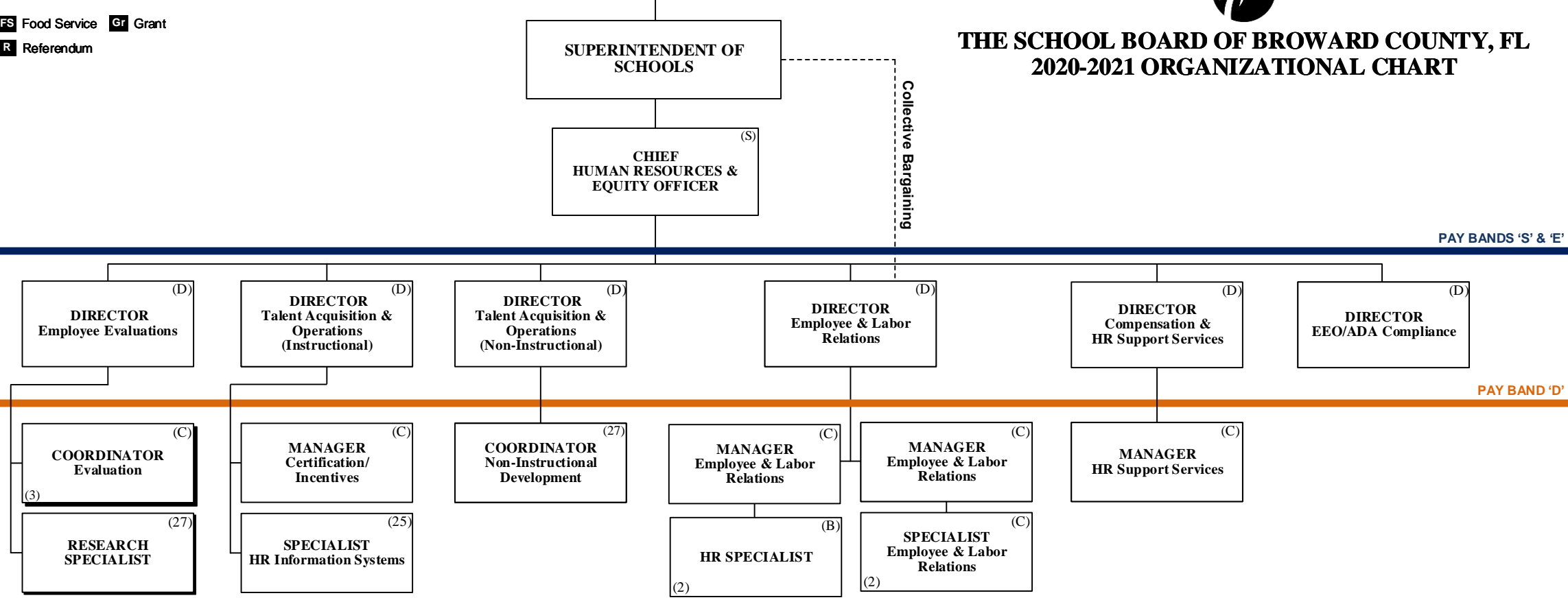
THE SCHOOL BOARD OF BROWARD COUNTY, FLORIDA



THE SCHOOL BOARD OF BROWARD COUNTY, FL 2020-2021 ORGANIZATIONAL CHART

Funding from sources other than General Funds

Funding:
C Capital **FS** Food Service **Gr** Grant
G General **R** Referendum



ESMAB PAY BANDS 'C' & 'B'
TSP/PBA PAY GRADES 25-28

INFORMATION & TECHNOLOGY



THE SCHOOL BOARD OF BROWARD COUNTY, FL 2020-2021 ORGANIZATIONAL CHART

Funding from sources other than General Funds

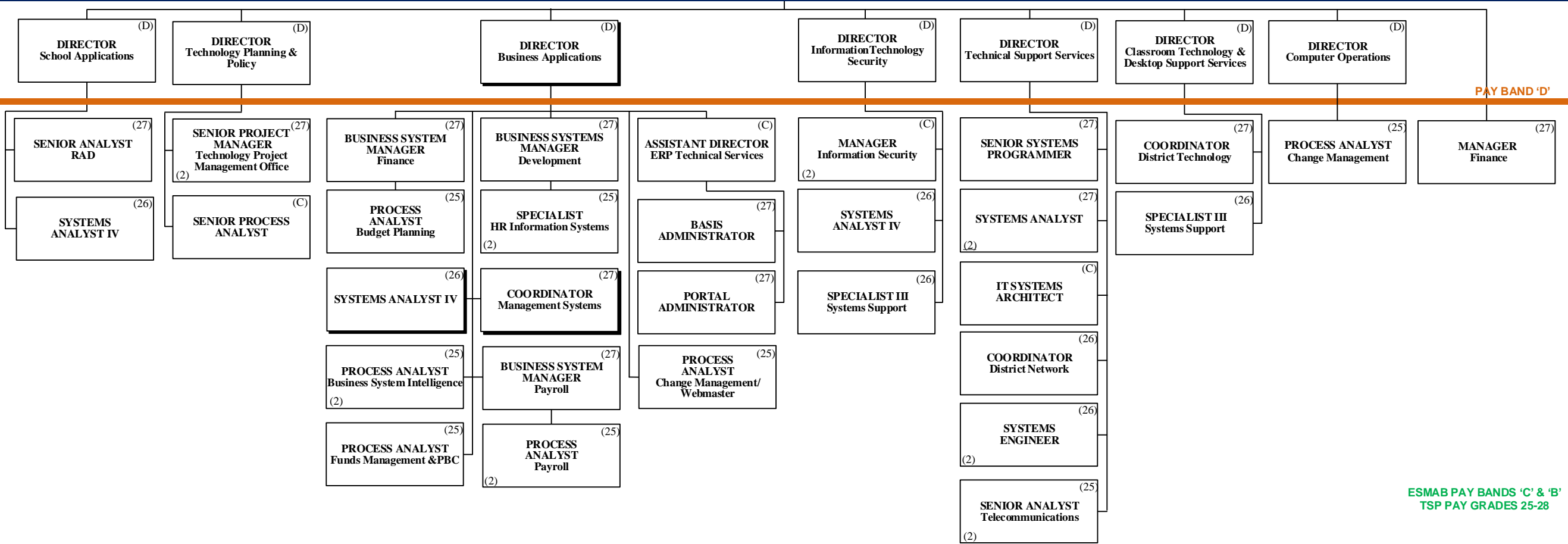
Funding:
C Capital **FS** Food Service **Gr** Grant
G General **R** Referendum

THE SCHOOL BOARD OF BROWARD COUNTY, FLORIDA

SUPERINTENDENT OF SCHOOLS

CHIEF INFORMATION OFFICER (S)

PAY BANDS 'S' & 'E'



PAY BAND 'D'

ESMAB PAY BANDS 'C' & 'B'
TSP PAY GRADES 25-28



PORTFOLIO SERVICES

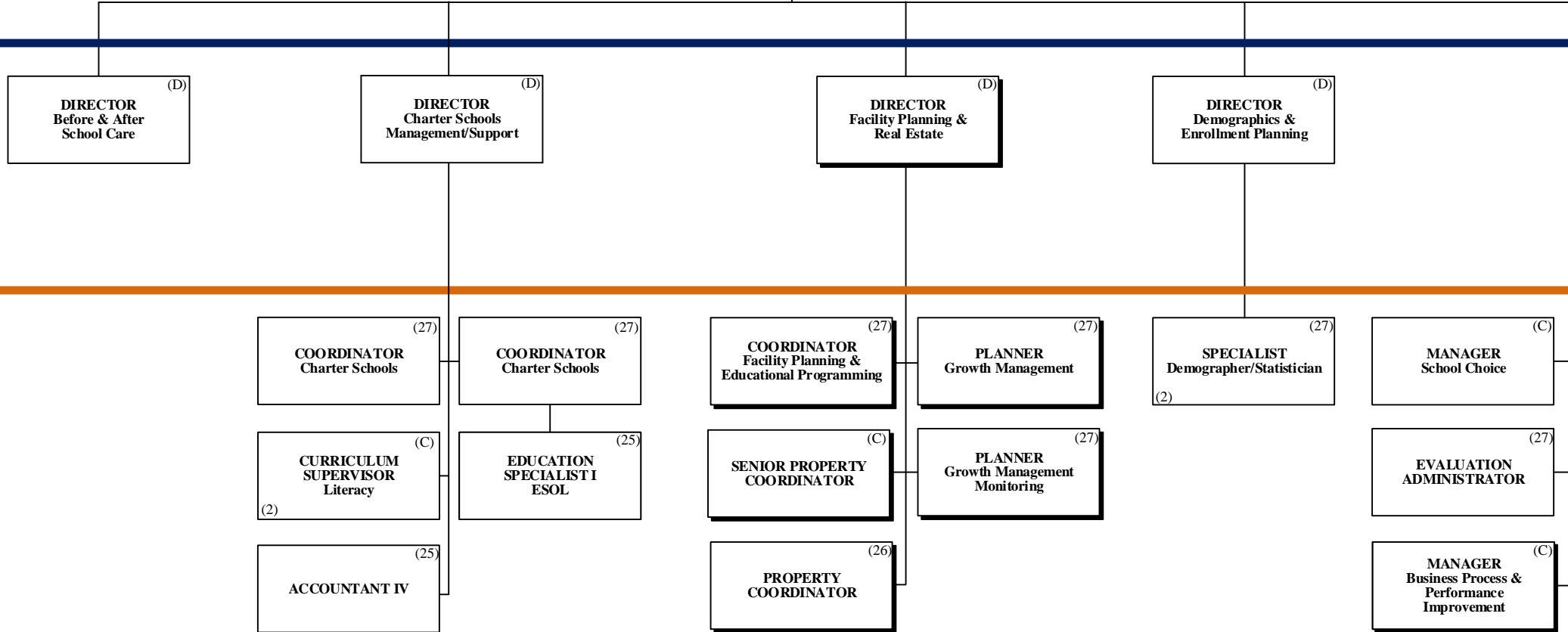
THE SCHOOL BOARD OF BROWARD COUNTY, FLORIDA

**THE SCHOOL BOARD OF BROWARD COUNTY, FL
2020-2021 ORGANIZATIONAL CHART**

Funding:
C Capital **FS** Food Service **Gr** Grant
G General **R** Referendum
 Funding from sources other than General Funds

SUPERINTENDENT OF SCHOOLS

CHIEF PORTFOLIO SERVICES OFFICER (E)



PAY BANDS 'S' & 'E'

PAY BAND 'D'

ESMAB PAY BANDS 'C' & 'B'
TSP PAY GRADES 25-28



**THE SCHOOL BOARD OF BROWARD COUNTY, FL
2020-2021 ORGANIZATIONAL CHART**

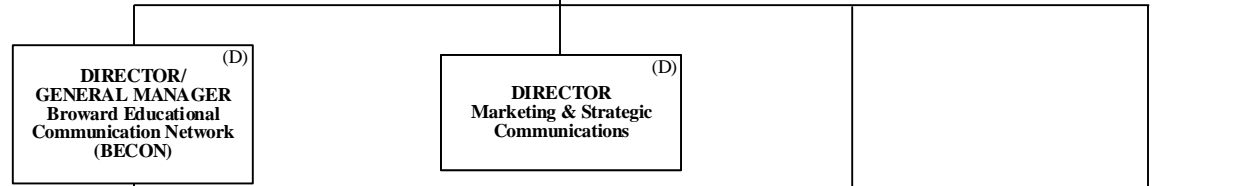
COMMUNICATIONS

THE SCHOOL BOARD OF BROWARD COUNTY, FLORIDA

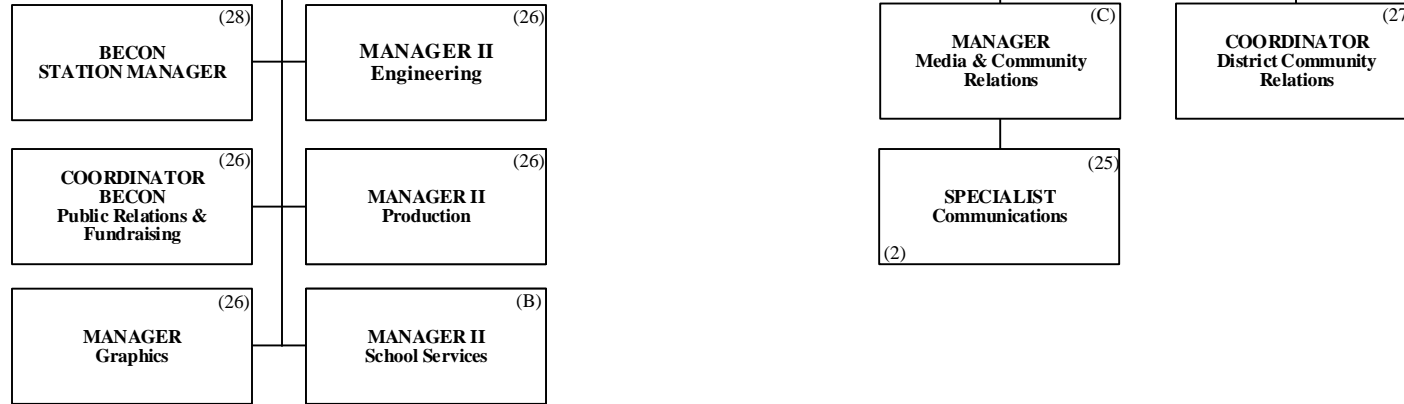
SUPERINTENDENT OF SCHOOLS

CHIEF COMMUNICATIONS OFFICER (E)

PAY BANDS 'S' & 'E'



PAY BAND 'D'



ESMAB PAY BANDS 'C' & 'B'
TSP PAY GRADES 25-28

CHIEF OF STAFF



THE SCHOOL BOARD OF BROWARD COUNTY, FL 2020-2021 ORGANIZATIONAL CHART

Funding from sources other than General Funds

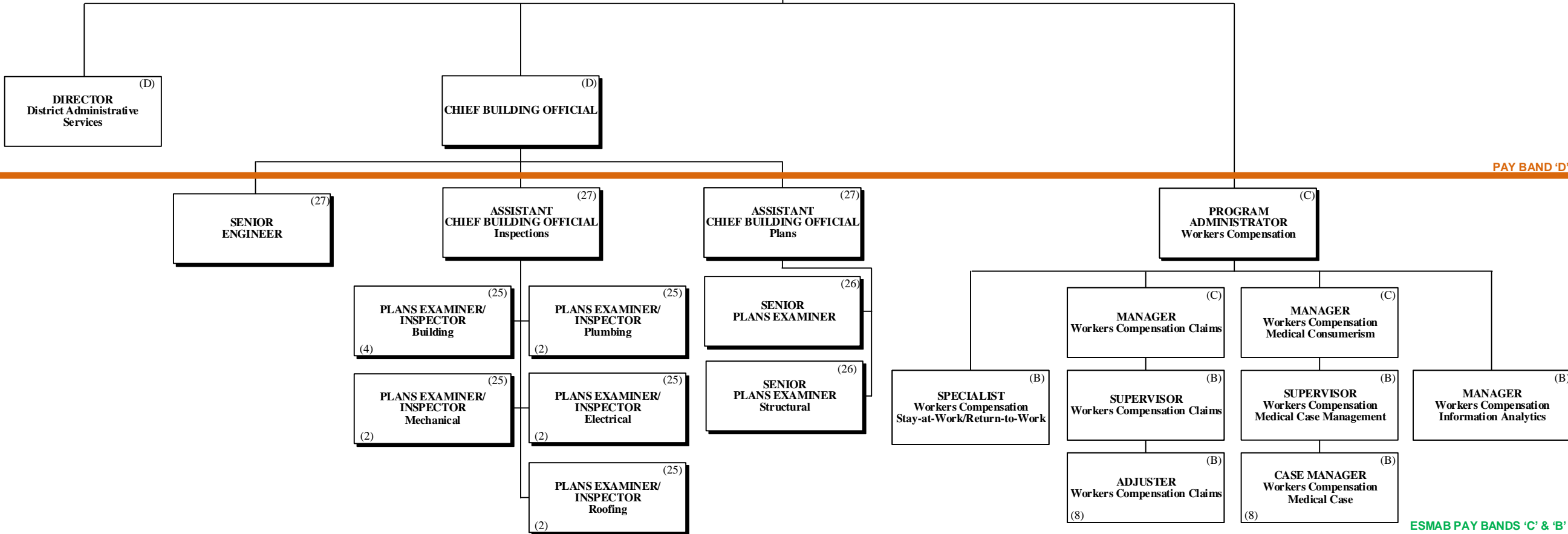
Funding:
C Capital **FS** Food Service **Gr** Grant
G General **R** Referendum

THE SCHOOL BOARD OF BROWARD COUNTY, FLORIDA

SUPERINTENDENT OF SCHOOLS

CHIEF OF STAFF (S)

PAY BANDS 'S' & 'E'



PAY BAND 'D'

ESMAB PAY BANDS 'C' & 'B'
TSP PAY GRADES 25-28

SAFETY, SECURITY & EMERGENCY PREPAREDNESS

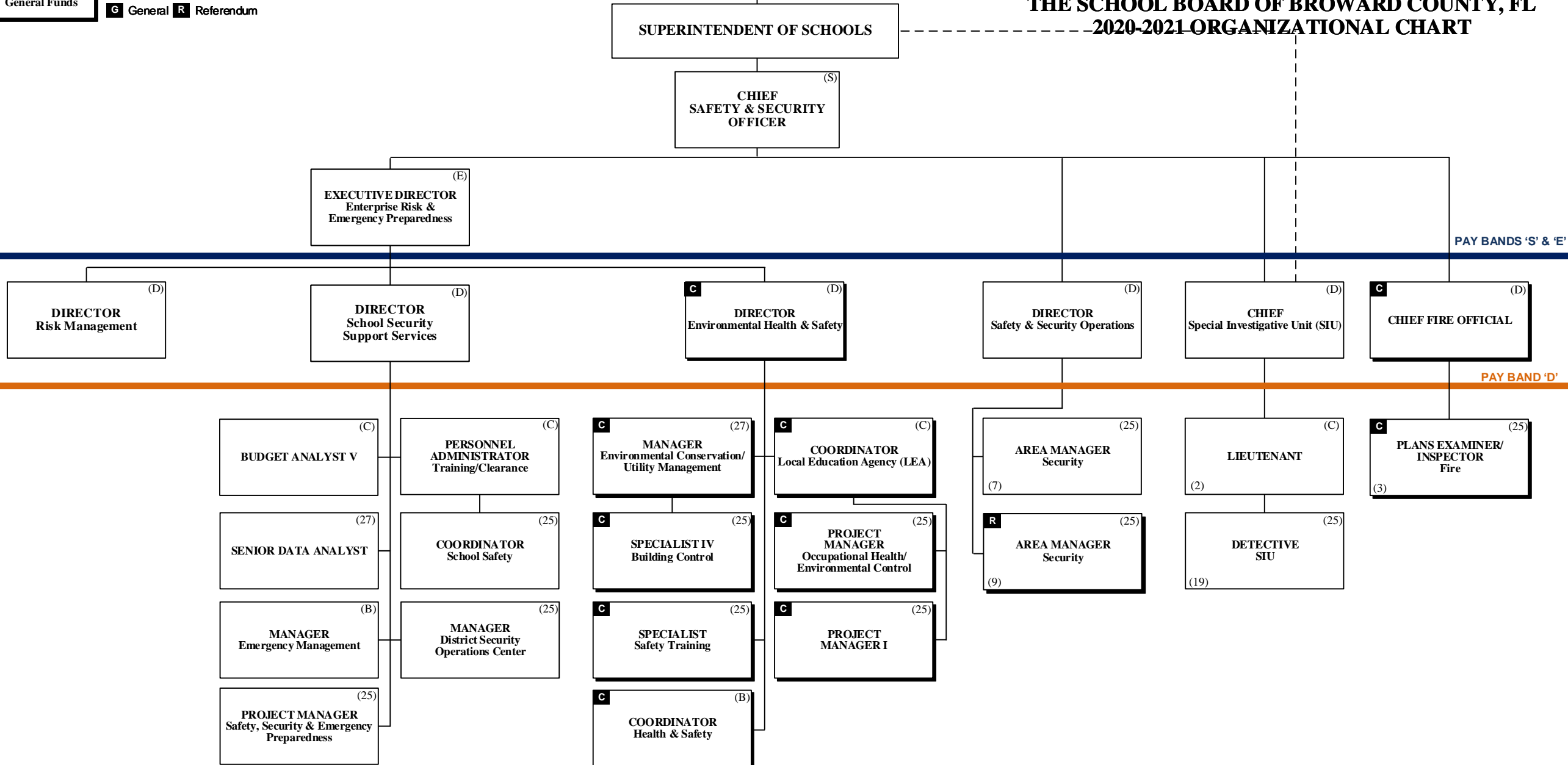


THE SCHOOL BOARD OF BROWARD
COUNTY, FLORIDA

THE SCHOOL BOARD OF BROWARD COUNTY, FL
2020-2021 ORGANIZATIONAL CHART

Funding from sources other than General Funds

Funding:
C Capital **FS** Food Service **Gr** Grant
G General **R** Referendum



PAY BANDS 'S' & 'E'

PAY BAND 'D'

ESMAB PAY BANDS 'C' & 'B'
TSP PAY GRADES 25-28

Funding from sources other than General Funds

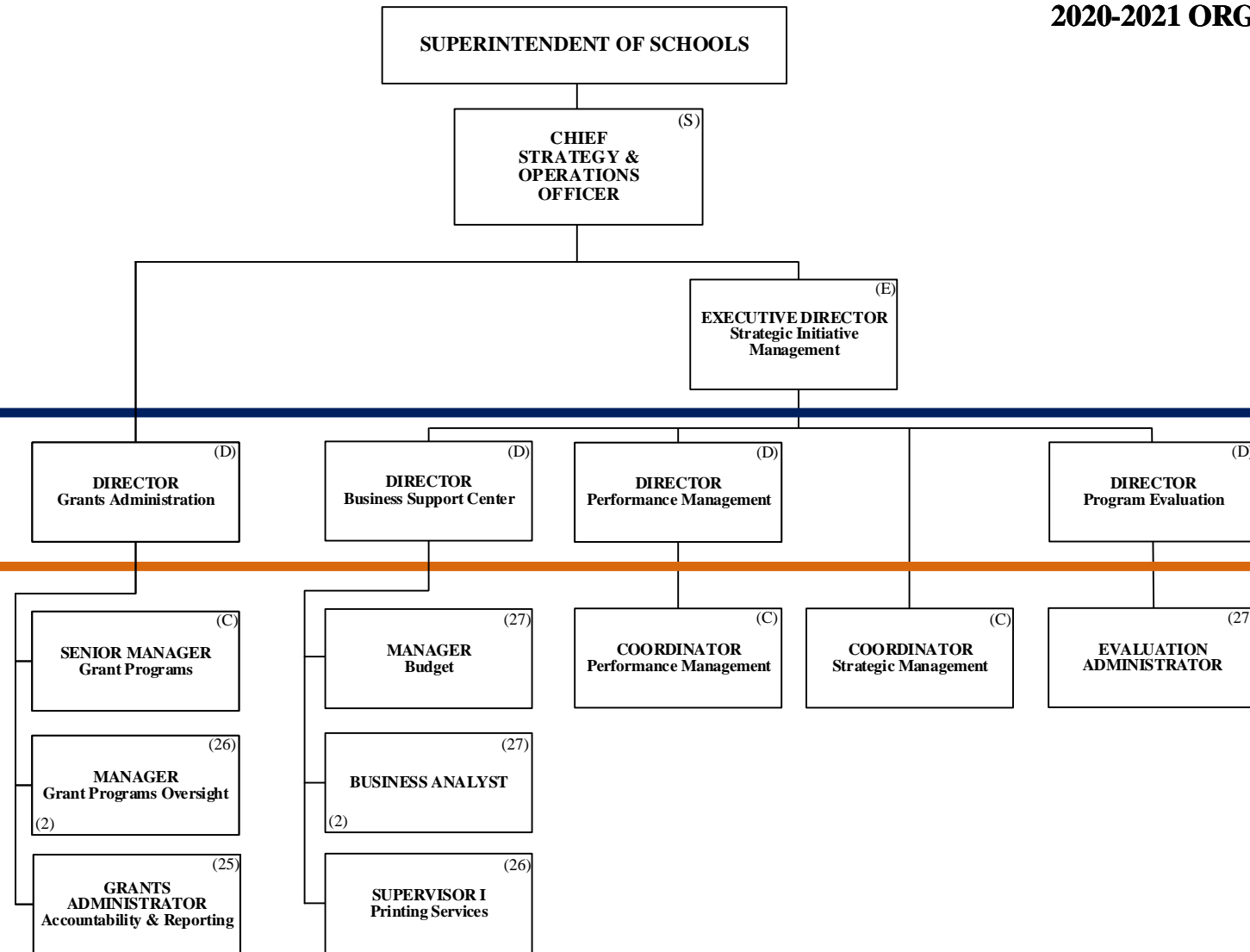
Funding:
C Capital **FS** Food Service **Gr** Grant
G General **R** Referendum

STRATEGY & OPERATIONS



THE SCHOOL BOARD OF BROWARD COUNTY, FL 2020-2021 ORGANIZATIONAL CHART

THE SCHOOL BOARD OF BROWARD COUNTY, FLORIDA



PAY BANDS 'S' & 'E'

PAY BAND 'D'

ESMAB PAY BANDS 'C' & 'B'
TSP PAY GRADES 25-28

STRATEGY & OPERATIONS

THE SCHOOL BOARD OF BROWARD COUNTY, FLORIDA



THE SCHOOL BOARD OF BROWARD COUNTY, FL 2020-2021 ORGANIZATIONAL CHART

Funding from sources other than General Funds

Funding:
C Capital **FS** Food Service **Gr** Grant
G General **R** Referendum

SUPERINTENDENT OF SCHOOLS

CHIEF STRATEGY & OPERATIONS OFFICER (S)

EXECUTIVE DIRECTOR Student Transportation & Fleet Services (E)

PAY BANDS 'S' & 'E'

DIRECTOR (D)
Food & Nutrition Services

DIRECTOR (D)
Procurement & Warehousing Services

OFFICER (D)
Economic Development & Diversity Compliance
C-50%
G-50%

DIRECTOR (D)
Student Transportation & Fleet Services

PAY BAND 'D'

ASSISTANT DIRECTOR (C)
Food & Nutrition Services

COORDINATOR (C)
Food & Nutrition Services (2)

MANAGER (C)
Strategic Sourcing

MANAGER (C)
Construction Sourcing

ASSISTANT DIRECTOR (C)
Procurement Compliance

MANAGER (C)
Supplier Diversity & Outreach Program
C-50%
G-50%

ASSISTANT DIRECTOR (C)
Transportation Support Services

MANAGER I (B)
Transportation Terminal (2)

MANAGER I (C)
Vehicle Maintenance

MANAGER (C)
Centralized Routing

AREA SUPERVISOR (B)
Food & Nutrition Services (11)

FINANCE MANAGER (C)
Food & Nutrition Services

MANAGER (B)
Warehousing Services

PURCHASING AGENT IV (25)
Construction

SENIOR PROCESS ANALYST (C)

COORDINATOR (26)
Supplier Diversity & Outreach Program

MANAGER II (C)
Transportation Terminal (2)

SUPERVISOR (25)
Special Needs Transportation

SUPERVISOR (25)
Vehicle Maintenance (2)

DATA ANALYST (25)
Transportation

AREA SUPERVISOR (B)
Special Programs Food & Nutrition Services (2)

PROGRAMMANAGER (26)
Nutrition, Education & Training

MANAGER (B)
Warehousing Services

PURCHASING AGENT IV (25)
Construction

SENIOR PROCESS ANALYST (C)

COORDINATOR (26)
Supplier Diversity & Outreach Program (Compliance)
C-50%
G-50%

ACCOUNTANT V (27)

SUPERVISOR (B)
Food & Nutrition Services Information Systems

SUPERVISOR (25)
Food & Nutrition Services Equipment & Supplies

MANAGER (B)
Warehousing Services

PURCHASING AGENT IV (25)
Construction

PROCESS ANALYST (25)
Procurement & Warehousing Services (2)

COORDINATOR (26)
Supplier Diversity & Outreach Program (Compliance)
C-50%
G-50%

ACCOUNTANT V (27)

STRATEGY & OPERATIONS



**THE SCHOOL BOARD OF BROWARD COUNTY, FL
2020-2021 ORGANIZATIONAL CHART**

Funding from sources other than General Funds

Funding:
C Capital **FS** Food Service **Gr** Grant
G General **R** Referendum

THE SCHOOL BOARD OF BROWARD COUNTY, FLORIDA

SUPERINTENDENT OF SCHOOLS

CHIEF STRATEGY & OPERATIONS OFFICER (S)

EXECUTIVE DIRECTOR Physical Plant Operations (E)

PAY BANDS 'S' & 'E'

DIRECTOR Physical Plant Operations (D)
 C-70%
 G-30%

PAY BAND 'D'

MANAGER Custodial/Grounds (C)
 C-55%
 G-45%

AREA MANAGER Trades Zone 1 (C)
 C-70%
 G-30%

AREA MANAGER Trades Zone 3 (C)
 C-70%
 G-30%

MANAGER Facilities Support Services (C)

MANAGER PPO Finance (C)

SENIOR PROCESS ANALYST (C)
 C

MANAGER Grounds (26)
 C-55%
 G-45%

AREA MANAGER Trades Zone 2 (C)
 C-70%
 G-30%

AREA MANAGER Trades District (C)
 C-70%
 G-30%

SUPERVISOR Work Flow/Labor Utilization (25)
 C-55%
 G-45%

SUPERVISOR Planning & Scheduling (25)
 C-55%
 G-45%

TRADE SUPERVISOR (25)
 (9)