



THE SCHOOL BOARD OF BROWARD COUNTY, FLORIDA
2021-2022 ORGANIZATIONAL CHART

Board Approved: 05/18/21
Revised: 6/15/21; 03/08/22



**THE SCHOOL BOARD OF BROWARD COUNTY, FLORIDA
2021-2022 ORGANIZATIONAL CHART**

School Board Appointed Committees & Public Stakeholders	1
Superintendent of Schools (Direct & Dotted Line Reports)	2
Teaching & Learning (Direct Reports)	3-8
School Performance & Accountability	4
Academics	5-7
Early Learning & Strategic Initiative Management	5
Exceptional Student Learning Support	6
Student Learning	7
Student Support Initiatives & Recovery	8
Safety, Security & Emergency Preparedness	9
Operations (Direct Reports)	10-18
Communications	11
Facilities	12
Finance	13-14
Human Resources & Equity	15
Information Technology	16-17
Food Service/Transportation	18
Chief of Staff	19
Auditor	20
General Counsel	21



**THE SCHOOL BOARD OF BROWARD COUNTY, FL
2021-2022 ORGANIZATIONAL CHART**

**SCHOOL BOARD APPOINTED COMMITTEES &
PUBLIC STAKEHOLDERS**

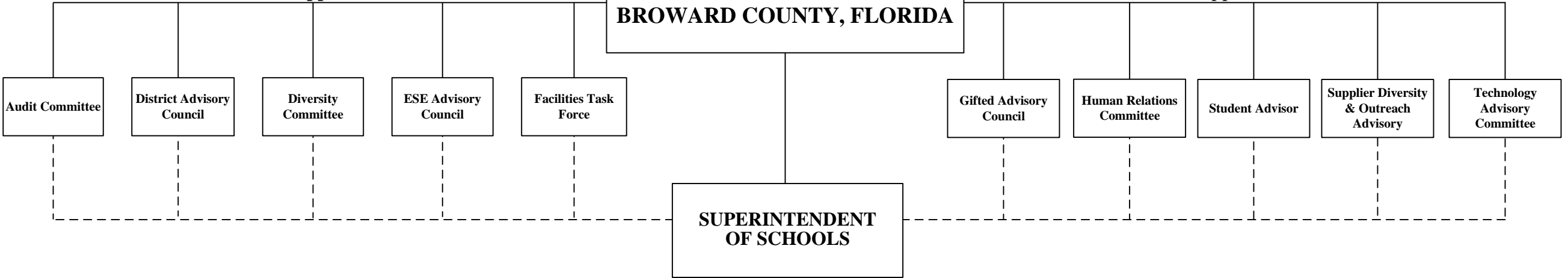
Funding:
Funding from sources other than General Funds
C Capital **FS** Food Service **Gr** Grant
G General **R** Referendum

**BROWARD COUNTY
COMMUNITY**

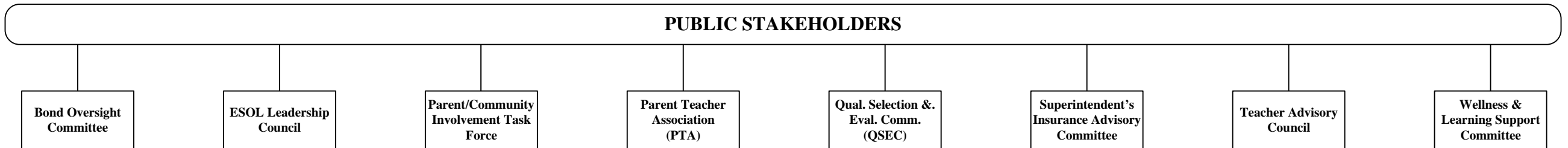
**THE SCHOOL BOARD OF
BROWARD COUNTY, FLORIDA**

School Board Appointed Committees

School Board Appointed Committees



PUBLIC STAKEHOLDERS



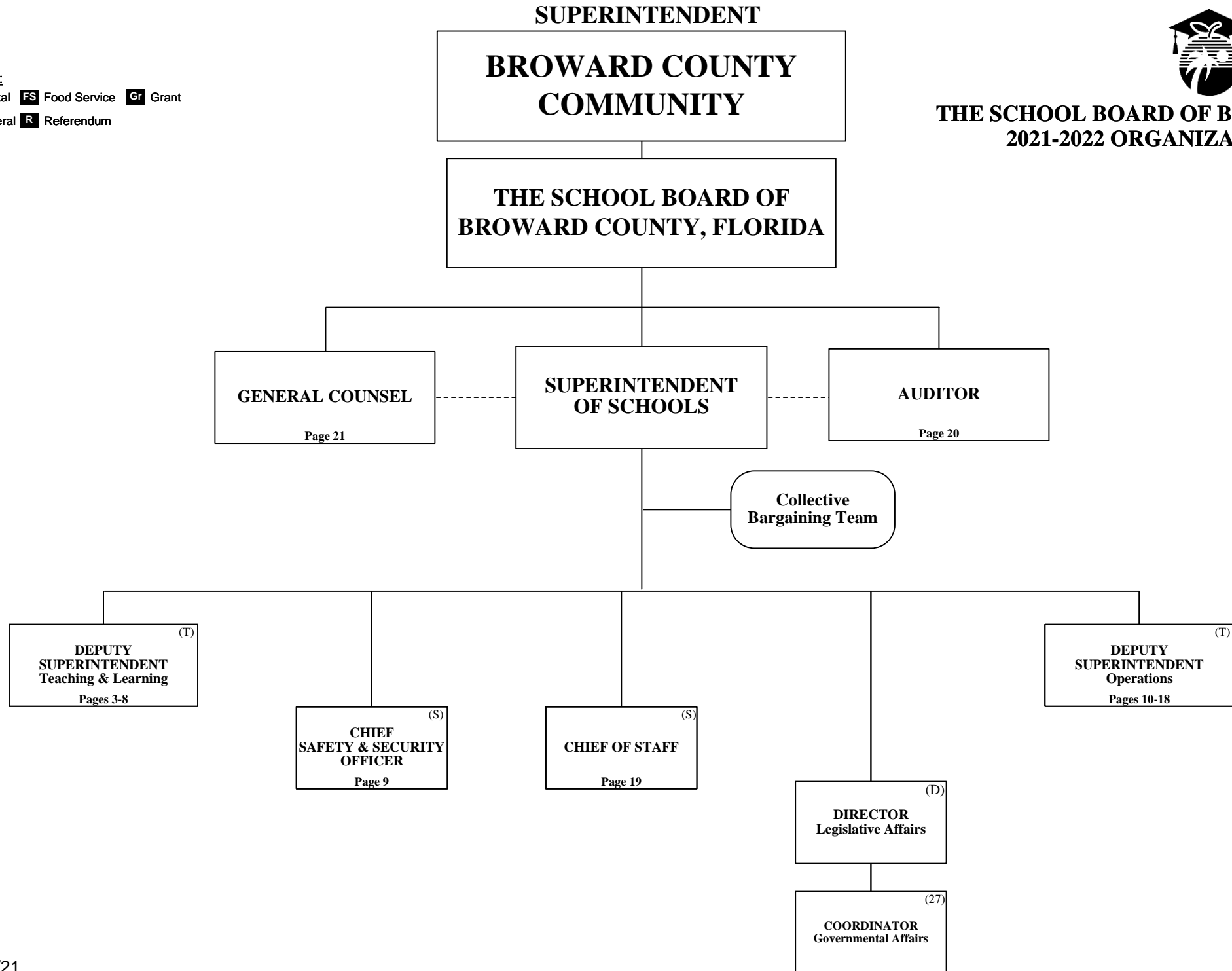
Funding from sources other than General Funds

Funding:

C Capital **FS** Food Service **Gr** Grant
G General **R** Referendum



**THE SCHOOL BOARD OF BROWARD COUNTY, FL
2021-2022 ORGANIZATIONAL CHART**



Funding from sources other than General Funds

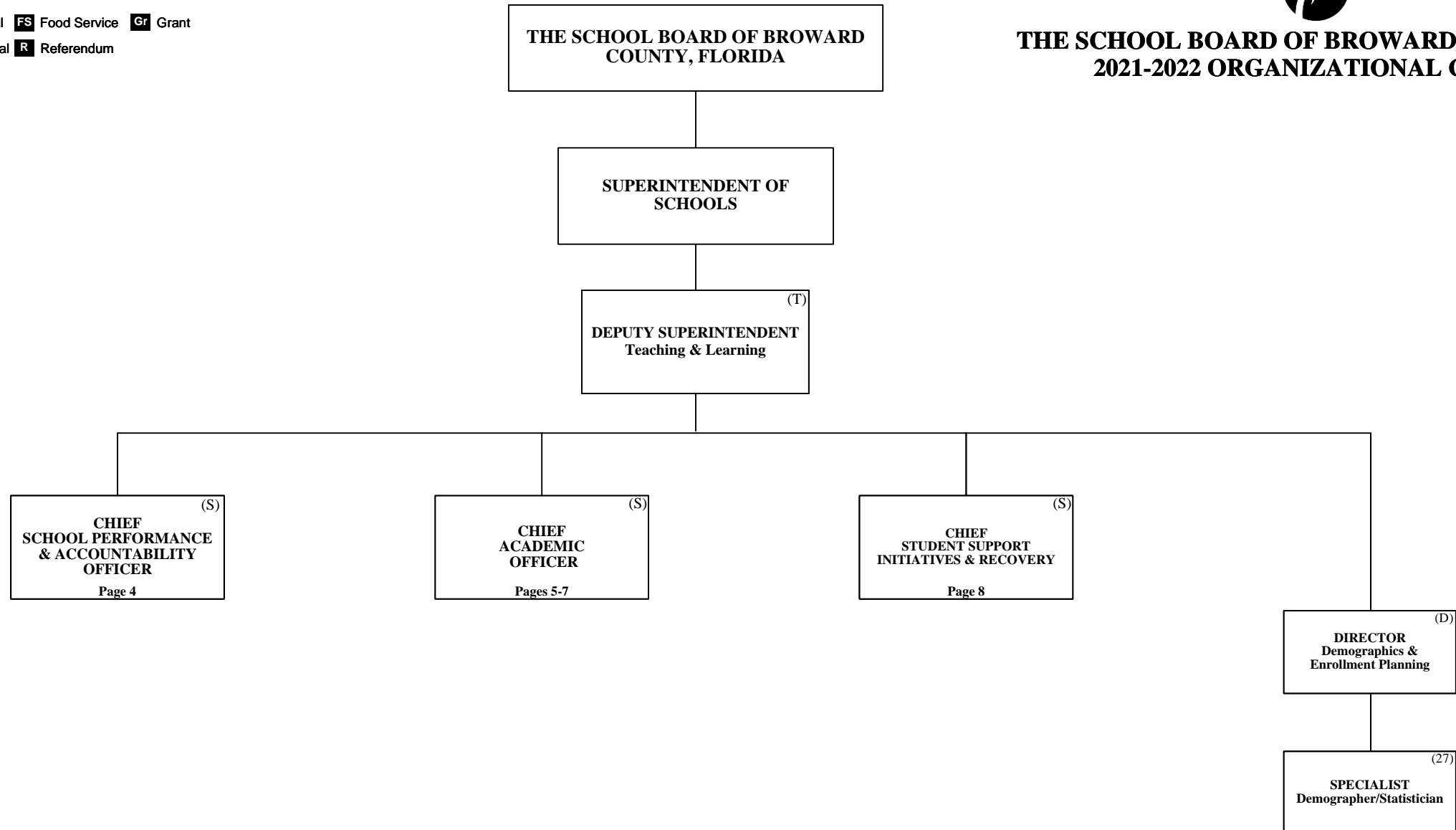
Funding:

C Capital **FS** Food Service **Gr** Grant
G General **R** Referendum

TEACHING & LEARNING



THE SCHOOL BOARD OF BROWARD COUNTY, FL 2021-2022 ORGANIZATIONAL CHART



TEACHING & LEARNING

School Performance & Accountability



THE SCHOOL BOARD OF BROWARD COUNTY, FL 2021-2022 ORGANIZATIONAL CHART

Funding:
 Funding from sources other than General Funds
C Capital **FS** Food Service **Gr** Grant
G General **R** Referendum

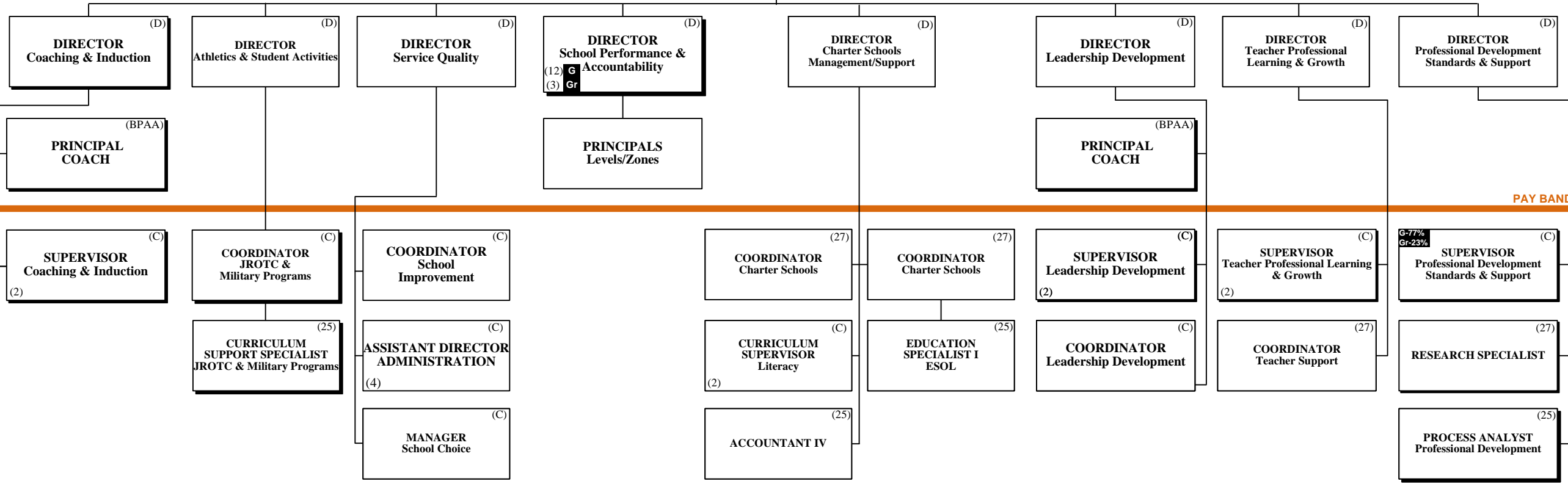
THE SCHOOL BOARD OF BROWARD COUNTY, FLORIDA

SUPERINTENDENT OF SCHOOLS

DEPUTY SUPERINTENDENT
Teaching & Learning (T)

CHIEF SCHOOL PERFORMANCE & ACCOUNTABILITY OFFICER (S)

PAY BANDS 'S' & 'E'



PAY BAND 'D'

PAY BANDS 'C' & 'B'

**TEACHING & LEARNING
ACADEMICS
Early Learning & Strategic Initiative Management**

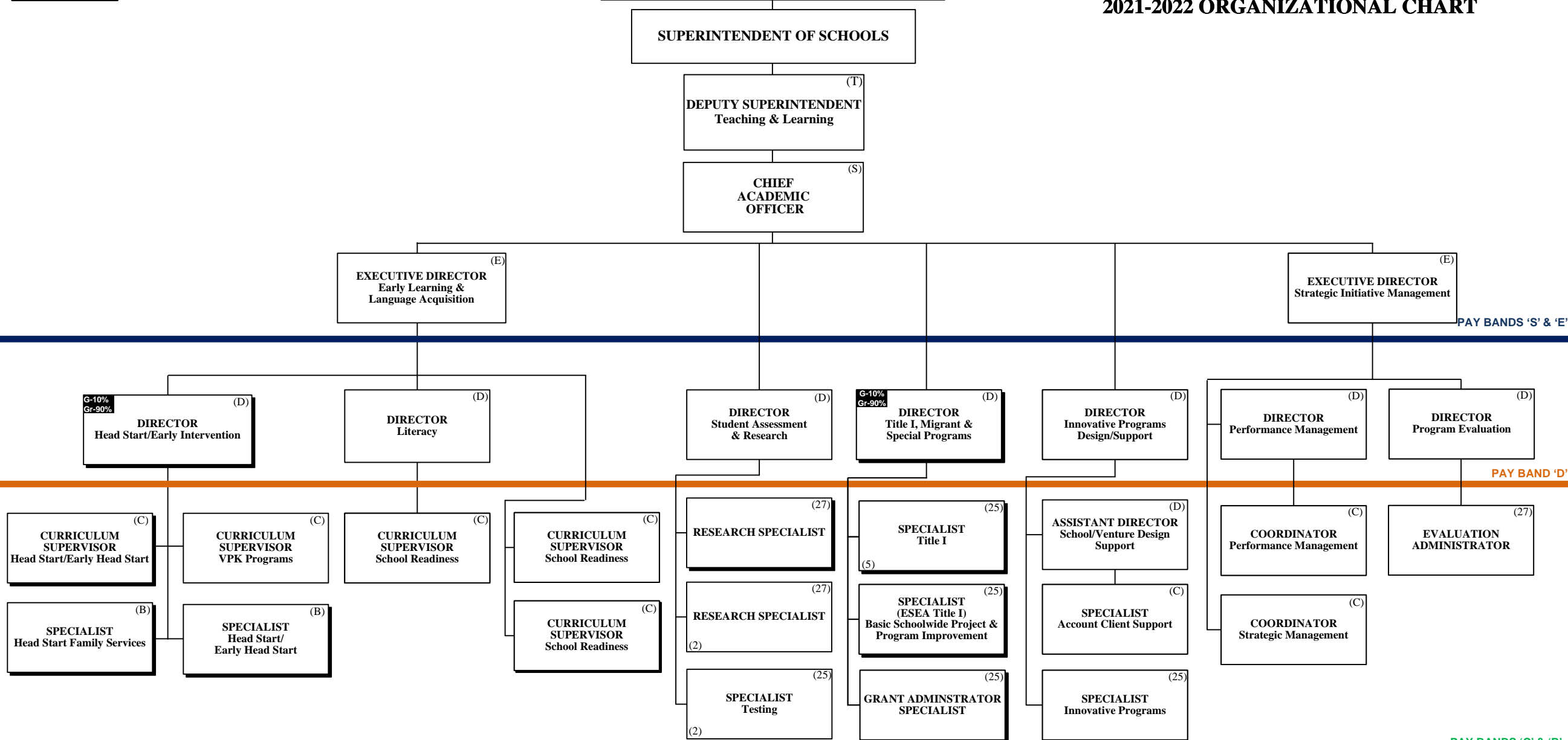


**THE SCHOOL BOARD OF BROWARD COUNTY, FL
2021-2022 ORGANIZATIONAL CHART**

Funding from sources other than General Funds

Funding:
C Capital **FS** Food Service **Gr** Grant
G General **R** Referendum

THE SCHOOL BOARD OF BROWARD COUNTY, FLORIDA



**TEACHING & LEARNING
ACADEMICS
Exceptional Student Learning Support**



**THE SCHOOL BOARD OF BROWARD COUNTY, FL
2021-2022 ORGANIZATIONAL CHART**

Funding from sources other than General Funds

Funding:
C Capital **FS** Food Service **Gr** Grant
G General **R** Referendum

THE SCHOOL BOARD OF BROWARD COUNTY, FLORIDA

SUPERINTENDENT OF SCHOOLS

^(T)
DEPUTY SUPERINTENDENT
Teaching & Learning

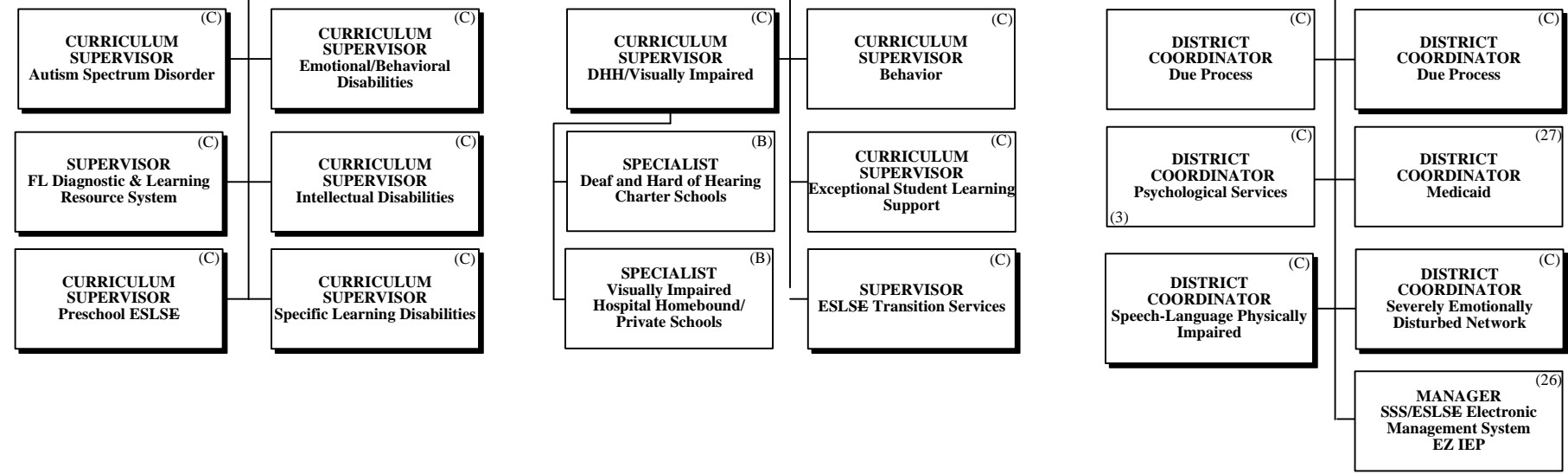
^(S)
CHIEF
ACADEMIC
OFFICER

^(E)
EXECUTIVE DIRECTOR
Exceptional Student Learning
Support

PAY BANDS 'S' & 'E'

^(D)
DIRECTOR
Exceptional Student Learning
Support (Pre-K/Elementary)
^(D)
DIRECTOR
Exceptional Student Learning
Support (Secondary)
^(D)
DIRECTOR
Exceptional Student Learning
Support Services

PAY BAND 'D'



**TEACHING & LEARNING
ACADEMICS
Student Learning**



**THE SCHOOL BOARD OF BROWARD COUNTY, FL
2021-2022 ORGANIZATIONAL CHART**

Funding from sources other than General Funds

Funding:
C Capital **FS** Food Service **Gr** Grant
G General **R** Referendum

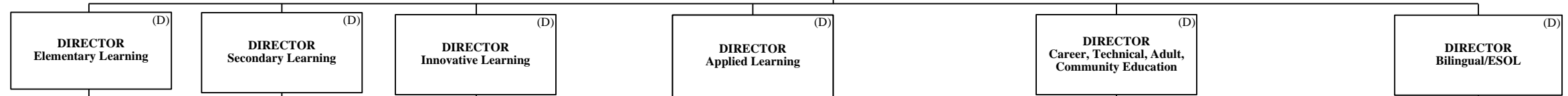
THE SCHOOL BOARD OF BROWARD COUNTY, FLORIDA

SUPERINTENDENT OF SCHOOLS

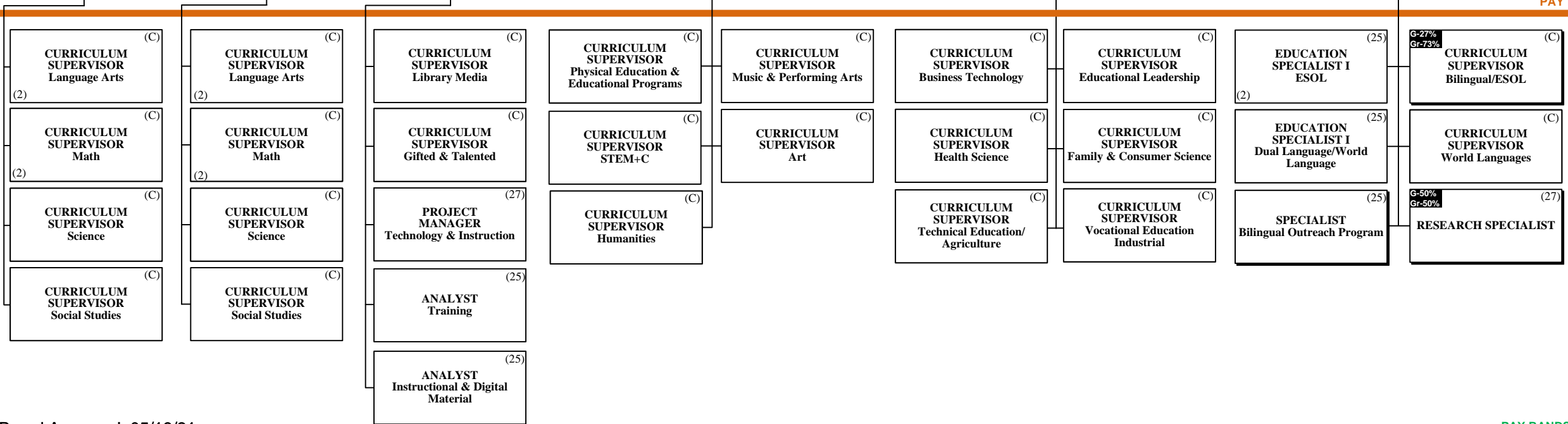
DEPUTY SUPERINTENDENT
Teaching & Learning

CHIEF
ACADEMIC
OFFICER

PAY BANDS 'S' & 'E'



PAY BAND 'D'



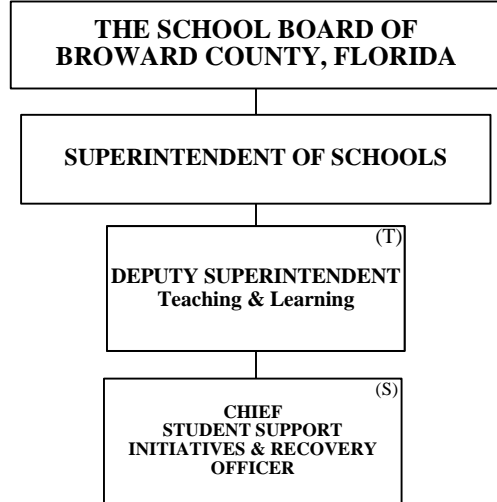
TEACHING & LEARNING

Student Support Initiatives & Recovery

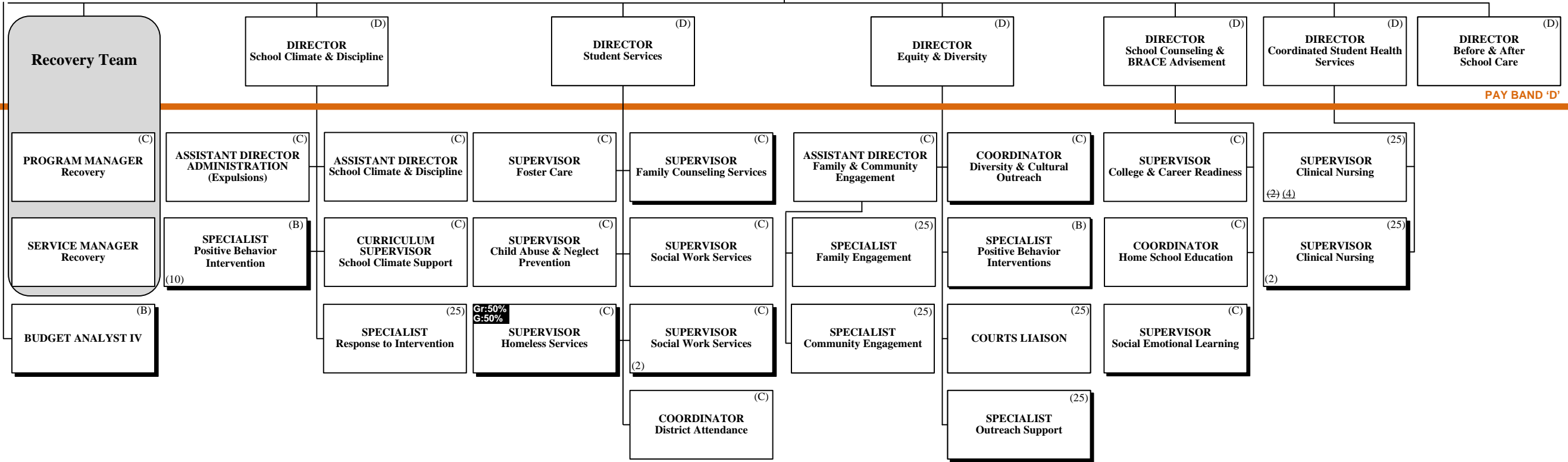


THE SCHOOL BOARD OF BROWARD COUNTY, FL
2021-2022 ORGANIZATIONAL CHART

Funding:
C Capital FS Food Service Gr Grant
G General R Referendum



PAY BANDS 'S' & 'E'



PAY BAND 'D'

SAFETY, SECURITY & EMERGENCY PREPAREDNESS



THE SCHOOL BOARD OF BROWARD
COUNTY, FLORIDA

THE SCHOOL BOARD OF BROWARD COUNTY, FL
2021-2022 ORGANIZATIONAL CHART

Funding:
C Capital FS Food Service Gr Grant
G General R Referendum
 Funding from sources other than General Funds

SUPERINTENDENT OF SCHOOLS

CHIEF SAFETY & SECURITY OFFICER (S)

EXECUTIVE DIRECTOR
Enterprise Risk & Emergency Preparedness (E)

DIRECTOR Risk Management (D)

DIRECTOR School Security Support Services (D)

C DIRECTOR Environmental Health & Safety (D)

DIRECTOR Safety & Security Operations (D)

CHIEF Special Investigative Unit (SIU) (D)

C CHIEF FIRE OFFICIAL (D)

PAY BANDS 'S' & 'E'

PAY BAND 'D'

BUDGET ANALYST V (C)

SENIOR DATA ANALYST (27)

PROJECT MANAGER Safety, Security & Emergency Preparedness (25)

MANAGER Emergency Management (B)

COORDINATOR School Safety (25)

MANAGER District Security Operations Center (25)

C MANAGER Environmental Conservation/Utility Management (27)

C PROJECT MANAGER II Guaranteed Energy Performance (26)

C SPECIALIST IV Building Control (25)

C SPECIALIST Safety Training (25)

C COORDINATOR Environmental Compliance (C)

C PROJECT MANAGER Occupational Health/Environmental Control (25)

C COORDINATOR Health & Safety (B)

AREA MANAGER Security (25)
(7)

R AREA MANAGER Security (25)
(9)

LIEUTENANT (C)
(2)

SERGEANT (B)

DETECTIVE SIU (25)
(19)

PERSONNEL ADMINISTRATOR Training/Clearance (C)

C PLANS EXAMINER/INSPECTOR Fire (25)
(4)

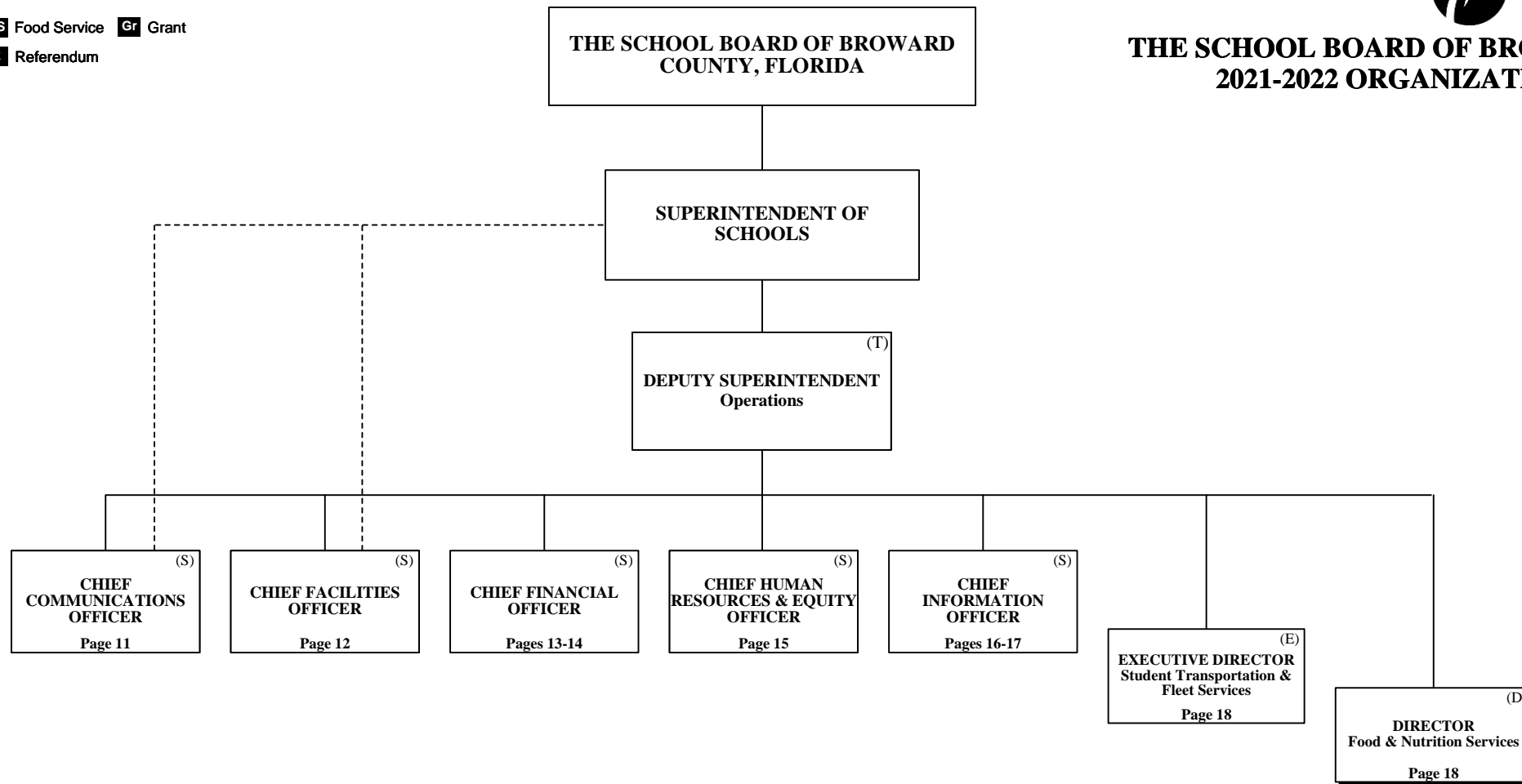
ESMAB PAY BANDS 'C' & 'B'
TSP PAY GRADES 25-28



**THE SCHOOL BOARD OF BROWARD COUNTY, FL
2021-2022 ORGANIZATIONAL CHART**

OPERATIONS

Funding from sources other than General Funds
Funding:
C Capital **FS** Food Service **Gr** Grant
G General **R** Referendum



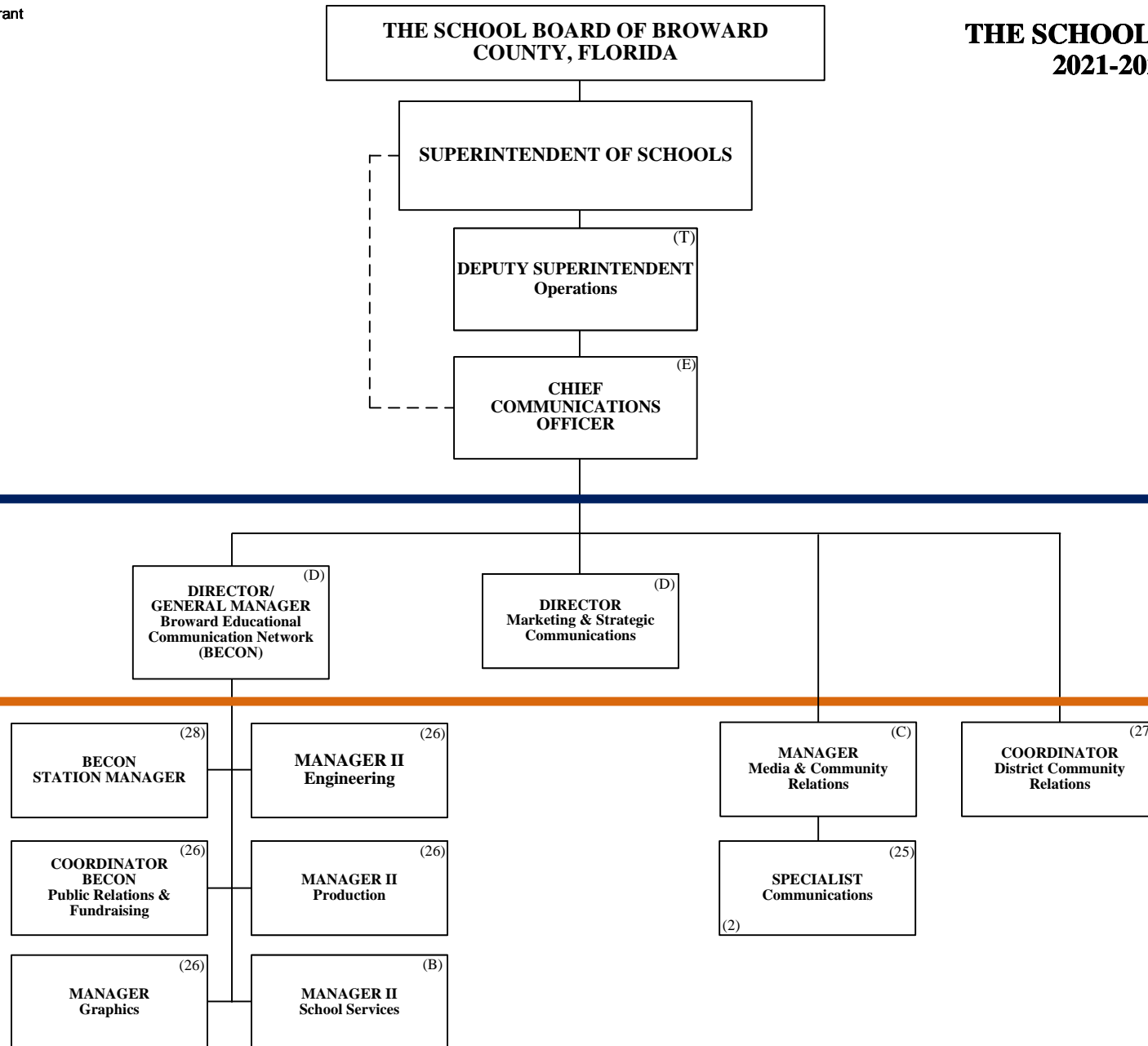


**THE SCHOOL BOARD OF BROWARD COUNTY, FL
2021-2022 ORGANIZATIONAL CHART**

Funding from sources other than General Funds

Funding:
C Capital **FS** Food Service **Gr** Grant
G General **R** Referendum

**OPERATIONS
Communications**



PAY BANDS 'S' & 'E'

PAY BAND 'D'

ESMAB PAY BANDS 'C' & 'B'
TSP PAY GRADES 25-28

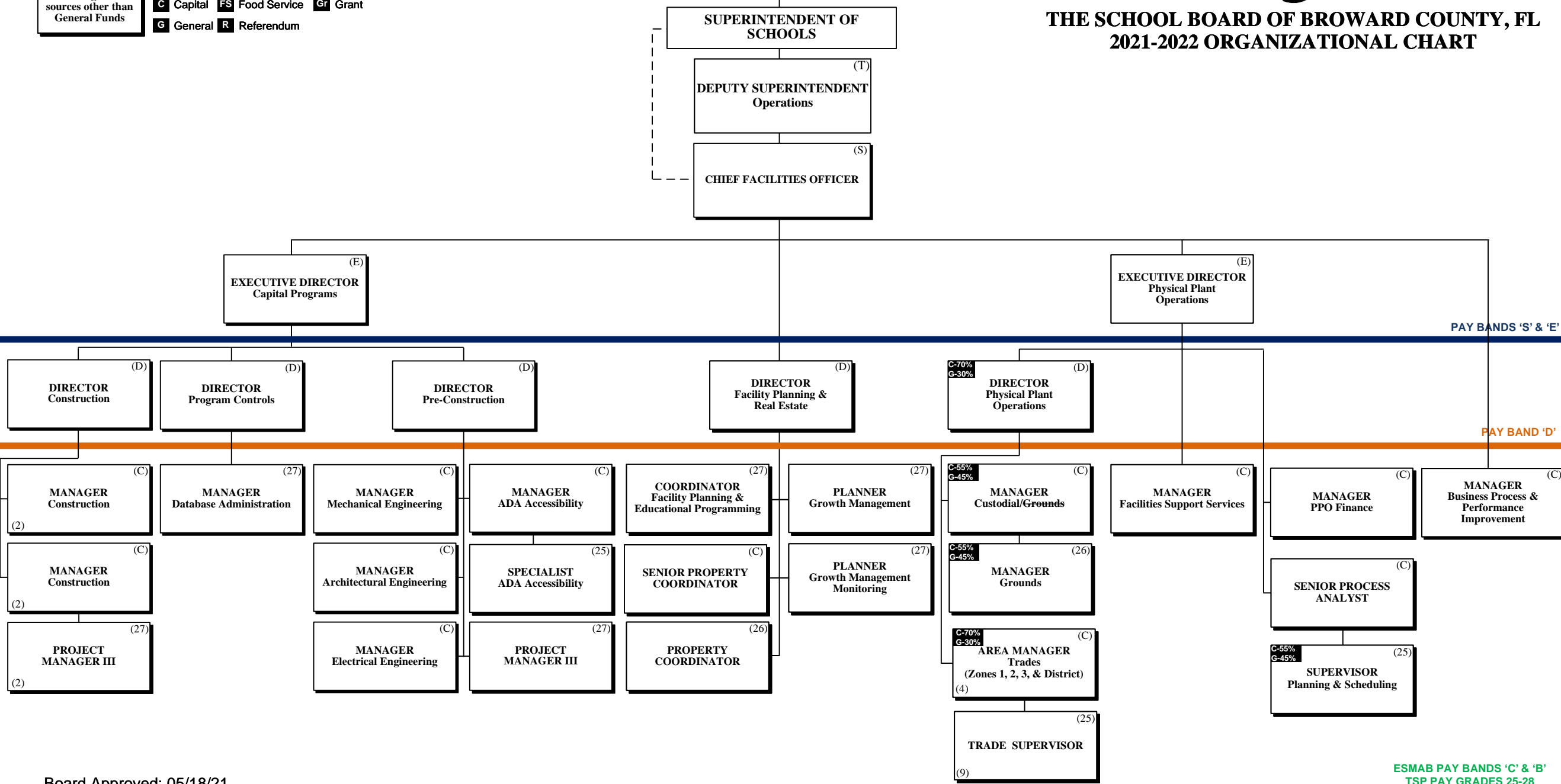
OPERATIONS Facilities



THE SCHOOL BOARD OF BROWARD COUNTY, FL 2021-2022 ORGANIZATIONAL CHART

THE SCHOOL BOARD OF BROWARD
COUNTY, FLORIDA

Funding:
 Funding from sources other than General Funds
C Capital **FS** Food Service **Gr** Grant
G General **R** Referendum



Board Approved: 05/18/21
 Revised: 6/15/21; 03/08/22

ESMAB PAY BANDS 'C' & 'B'
TSP PAY GRADES 25-28

**OPERATIONS
Finance**



**THE SCHOOL BOARD OF BROWARD COUNTY, FL
2021-2022 ORGANIZATIONAL CHART**

Funding from sources other than General Funds

Funding:
C Capital **FS** Food Service **Gr** Grant
G General **R** Referendum

THE SCHOOL BOARD OF BROWARD COUNTY, FLORIDA

SUPERINTENDENT OF SCHOOLS

DEPUTY SUPERINTENDENT Operations (T)

CHIEF FINANCIAL OFFICER (CFO) (S)
 C-20%
 G-80%

PAY BANDS 'S' & 'E'

DIRECTOR Accounting & Financial Reporting (D)

DIRECTOR Budget (D)

TREASURER (D)
 C-50%
 G-50%

DIRECTOR Payroll (D)

DIRECTOR Capital Budget (D)

PAY BAND 'D'

ASSISTANT DIRECTOR Accounting & Financial Reporting (C)

ASSISTANT DIRECTOR School Budget Support (C)

BUDGET ANALYST V (C)

SENIOR ANALYST Treasury (C)
 C-50%
 G-50%

SENIOR PAYROLL ANALYST (C)

ASSISTANT DIRECTOR Capital Budget (C)

CAPITAL NETWORK SYSTEMS ADMINISTRATOR (27)

ACCOUNTANT V (C)

BUSINESS ANALYST (27)
 (2)

BUDGET ANALYST IV (B)
 (2)

MANAGER Treasury (27)

SUPERVISOR Payroll (C)

CAPITAL BUDGET ANALYST V (27)

CAPITAL PAYMENT REVIEW SUPERVISOR (27)

ACCOUNTANT V (27)
 C-50%
 G-50%

EVALUATION ADMINISTRATOR (27)
 R

BUDGET ANALYST V (C)

BUDGET ANALYST IV (B)
 C-50%
 G-50%

CAPITAL BUDGET ANALYST IV (25)
 (2)

ACCOUNTANT IV (25)
 (3)

ASSISTANT DIRECTOR District Budgets & Revenue (C)

BUDGET ANALYST IV (B)
 (4)

OPERATIONS Finance



THE SCHOOL BOARD OF BROWARD COUNTY, FL 2021-2022 ORGANIZATIONAL CHART

THE SCHOOL BOARD OF BROWARD
COUNTY, FLORIDA

SUPERINTENDENT OF SCHOOLS

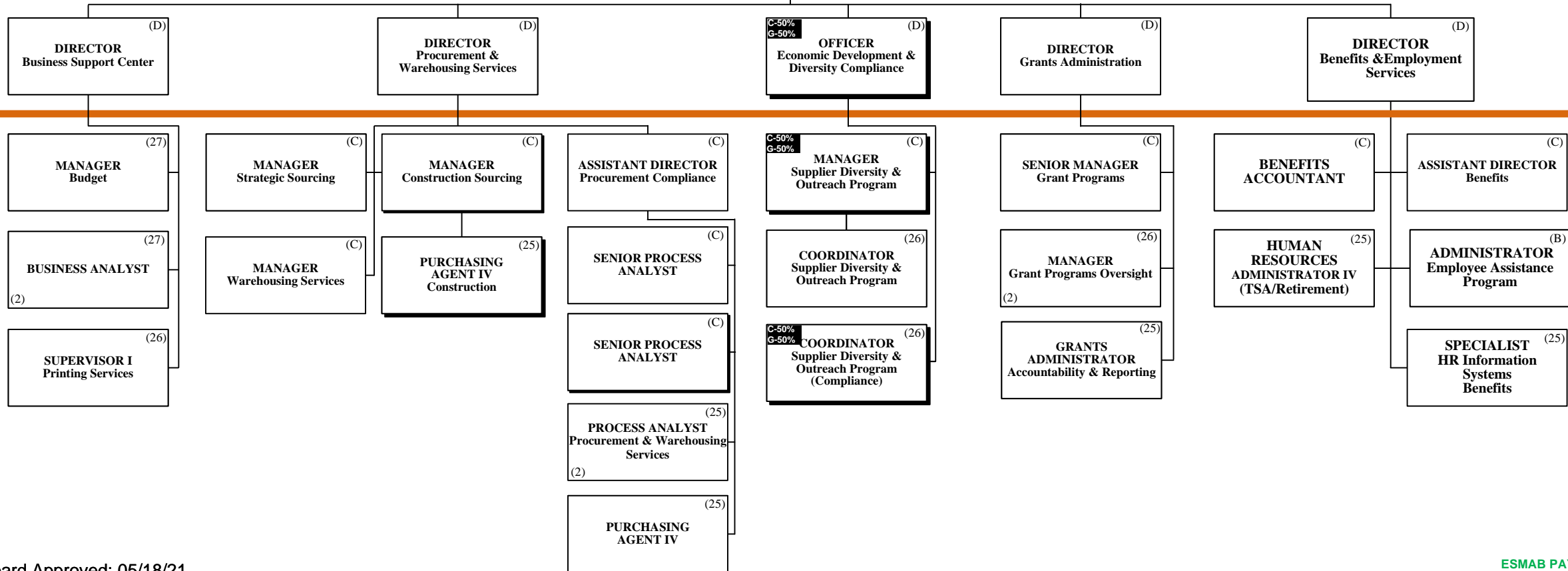
(T)
DEPUTY SUPERINTENDENT
Operations

C-20%
G-80% (S)
CHIEF
FINANCIAL
OFFICER (CFO)

Funding from sources other than General Funds

Funding:
C Capital **FS** Food Service **Gr** Grant
G General **R** Referendum

PAY BANDS 'S' & 'E'



PAY BAND 'D'

OPERATIONS
Human Resources & Equity



THE SCHOOL BOARD OF BROWARD COUNTY, FL
2021-2022 ORGANIZATIONAL CHART

Funding from sources other than General Funds

Funding:
C Capital **FS** Food Service **Gr** Grant
G General **R** Referendum

THE SCHOOL BOARD OF BROWARD COUNTY, FLORIDA

SUPERINTENDENT OF SCHOOLS

DEPUTY SUPERINTENDENT Operations (T)

CHIEF HUMAN RESOURCES & EQUITY OFFICER (S)

Collective Bargaining

PAY BANDS 'S' & 'E'

DIRECTOR Employee Evaluations (D)
 DIRECTOR Talent Acquisition & Operations (Instructional) (D)
 DIRECTOR Talent Acquisition & Operations (Non-Instructional) (D)
 DIRECTOR Employee & Labor Relations (D)
 DIRECTOR Compensation & HR Support Services (D)
 DIRECTOR EEO/ADA Compliance (D)

PAY BAND 'D'

COORDINATOR Evaluation (C) (3)
 RESEARCH SPECIALIST (27)
 MANAGER Certification/Incentives (C)
 COORDINATOR Management Systems (27)
 SPECIALIST HR Information Systems (25)
 COORDINATOR Non-Instructional Development (27)
 MANAGER Employee & Labor Relations (C)
 HR SPECIALIST (B) (2)
 MANAGER Employee & Labor Relations (C)
 SPECIALIST Employee & Labor Relations (C) (2)
 MANAGER HR Support Services (C)

ESMAB PAY BANDS 'C' & 'B'
TSP/PBA PAY GRADES 25-28

OPERATIONS Information Technology



THE SCHOOL BOARD OF BROWARD COUNTY, FL 2021-2022 ORGANIZATIONAL CHART

Funding:
 Funding from sources other than General Funds
C Capital **FS** Food Service **Gr** Grant
G General **R** Referendum

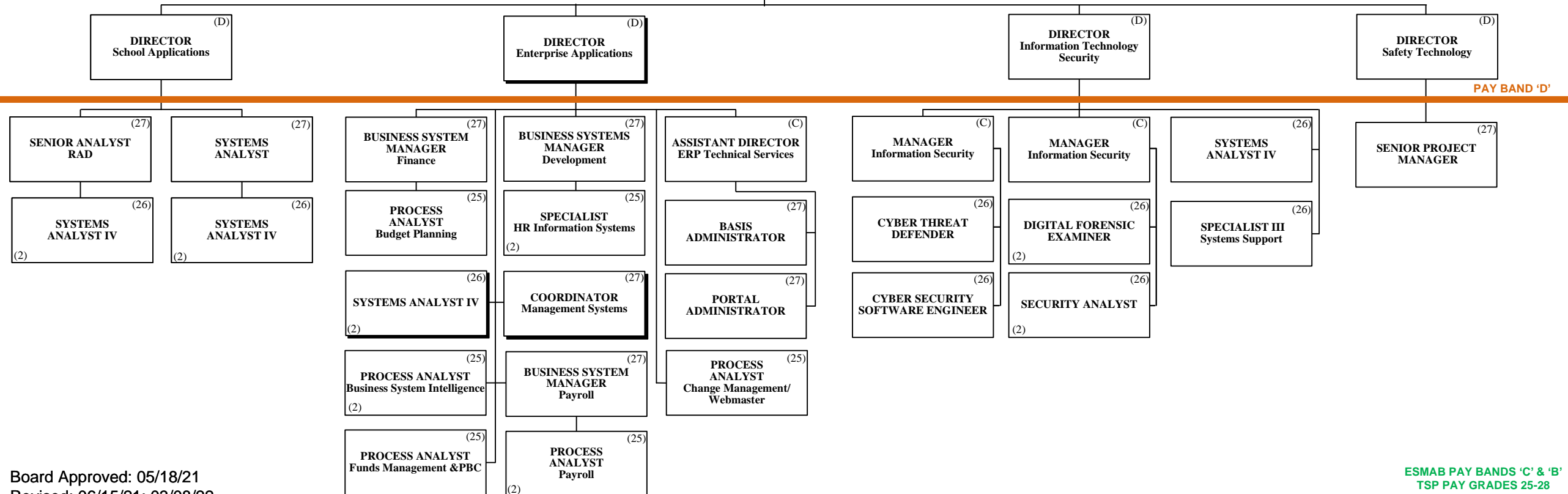
THE SCHOOL BOARD OF BROWARD COUNTY, FLORIDA

SUPERINTENDENT OF SCHOOLS

DEPUTY SUPERINTENDENT
Operations ^(T)

CHIEF INFORMATION OFFICER ^(S)

PAY BANDS 'S' & 'E'



Board Approved: 05/18/21
 Revised: 06/15/21; 03/08/22

ESMAB PAY BANDS 'C' & 'B'
 TSP PAY GRADES 25-28



THE SCHOOL BOARD OF BROWARD COUNTY, FL 2021-2022 ORGANIZATIONAL CHART

OPERATIONS Information Technology

THE SCHOOL BOARD OF BROWARD
COUNTY, FLORIDA

SUPERINTENDENT OF SCHOOLS

(T)
DEPUTY SUPERINTENDENT
Operations

(S)
CHIEF
INFORMATION
OFFICER

(E)
EXECUTIVE DIRECTOR
IT Customer Service

(D)
DIRECTOR
Office of the CIO

(D)
DIRECTOR
Technical Support Services

(D)
DIRECTOR
Classroom Technology &
Desktop Support Services

(D)
DIRECTOR
Computer Operations

(27)
SENIOR PROJECT
MANAGER
Office of the CIO
(2)

(C)
IT SYSTEMS
ARCHITECT

(C)
MANAGER
Information Technology

(27)
SYSTEMS ANALYST

(27)
SYSTEMS ANALYST

(27)
SYSTEMS
PROGRAMMER

(27)
COORDINATOR
District Technology

(25)
PROCESS ANALYST
Change Management

(27)
MANAGER
Finance

(C)
SENIOR PROCESS
ANALYST

(26)
COORDINATOR
District Network

(25)
ENGINEER II
IT NOC & Maintenance

(26)
SYSTEMS
ENGINEER

(25)
SENIOR ANALYST
Telecommunications
(2)

(26)
SPECIALIST III
Systems Support

(26)
SYSTEMS
ENGINEER

PAY BANDS 'S' & 'E'

PAY BAND 'D'

Funding from sources other than General Funds
Funding: C Capital FS Food Service Gr Grant
G General R Referendum

**OPERATIONS
Food Service/Transportation**



**THE SCHOOL BOARD OF BROWARD COUNTY, FL
2021-2022 ORGANIZATIONAL CHART**

Funding from sources other than General Funds

Funding:
C Capital **FS** Food Service **Gr** Grant
G General **R** Referendum

THE SCHOOL BOARD OF BROWARD COUNTY, FLORIDA

SUPERINTENDENT OF SCHOOLS

DEPUTY SUPERINTENDENT Operations ^(T)

EXECUTIVE DIRECTOR Student Transportation & Fleet Services ^(E)

PAY BANDS 'S' & 'E'

DIRECTOR Food & Nutrition Services ^(D)

DIRECTOR Student Transportation & Fleet Services ^(D)

PAY BAND 'D'

ASSISTANT DIRECTOR Food & Nutrition Services ^(C)

COORDINATOR Food & Nutrition Services (2) ^(C)

SUPERVISOR Food & Nutrition Services Information Systems ^(B)

MANAGER Transportation Operations ^(C)

MANAGER I Transportation Terminal (2) ^(B)

MANAGER I Vehicle Maintenance ^(C)

MANAGER Centralized Routing ^(C)

AREA SUPERVISOR Food & Nutrition Services (11) ^(B)

FINANCE MANAGER Food & Nutrition Services ^(C)

PROGRAM MANAGER Nutrition, Education & Training (26) ^(B)

MANAGER II Transportation Terminal (2) ^(C)

SUPERVISOR Special Needs Transportation (25) ^(C)

SUPERVISOR Vehicle Maintenance (25) (2) ^(C)

DATA ANALYST Transportation (25) ^(C)

AREA SUPERVISOR Special Programs Food & Nutrition Services (2) ^(B)

SUPERVISOR Food & Nutrition Services Equipment & Supplies (25) ^(B)

ACCOUNTANT V (27) ^(C)

CHIEF OF STAFF



THE SCHOOL BOARD OF BROWARD COUNTY, FL 2021-2022 ORGANIZATIONAL CHART

Funding from sources other than General Funds

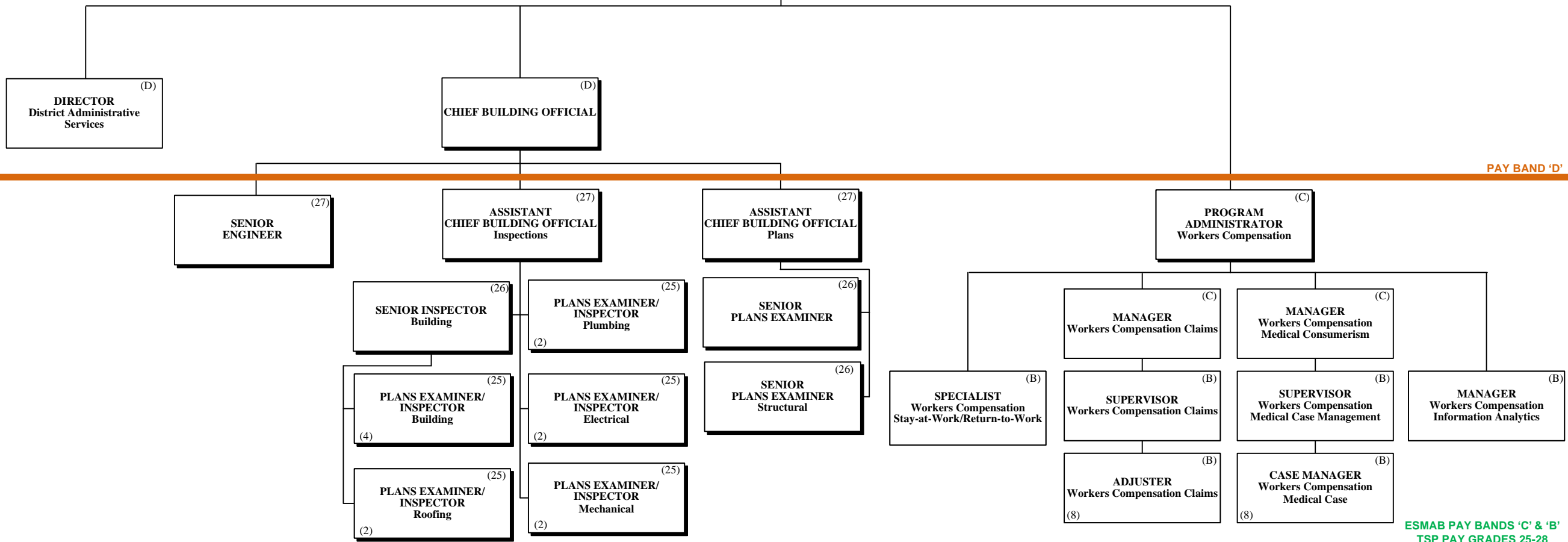
Funding:
C Capital **FS** Food Service **Gr** Grant
G General **R** Referendum

THE SCHOOL BOARD OF BROWARD COUNTY, FLORIDA

SUPERINTENDENT OF SCHOOLS

CHIEF OF STAFF (S)

PAY BANDS 'S' & 'E'



PAY BAND 'D'

ESMAB PAY BANDS 'C' & 'B'
TSP PAY GRADES 25-28

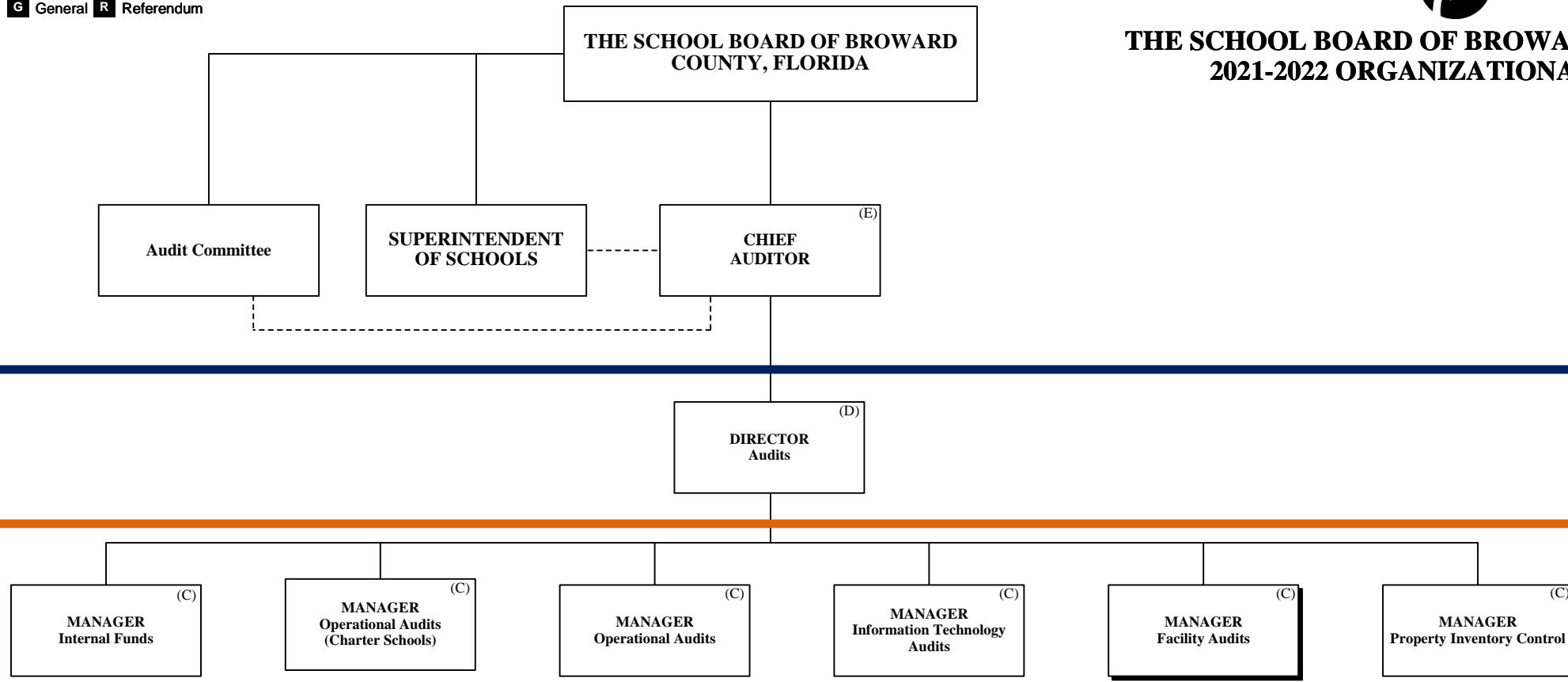


**THE SCHOOL BOARD OF BROWARD COUNTY, FL
2021-2022 ORGANIZATIONAL CHART**

Funding from sources other than General Funds

Funding:
C Capital **FS** Food Service **Gr** Grant
G General **R** Referendum

AUDITOR



PAY BANDS 'S' & 'E'

PAY BAND 'D'

PAY BANDS 'C' & 'B'

GENERAL COUNSEL



**THE SCHOOL BOARD OF BROWARD COUNTY, FL
2021-2022 ORGANIZATIONAL CHART**

Funding from sources other than General Funds

Funding:
C Capital **FS** Food Service **Gr** Grant
G General **R** Referendum

