



THE SCHOOL BOARD OF BROWARD COUNTY, FLORIDA
2022-2023 ORGANIZATIONAL CHART

Board Approved: 05/17/22



THE SCHOOL BOARD OF BROWARD COUNTY, FLORIDA
2022-2023 ORGANIZATIONAL CHART

School Board Appointed Committees & Public Stakeholders	1
Superintendent of Schools (Direct & Dotted Line Reports)	2
Teaching & Learning (Direct Reports)	3-9
Learning Communities	4
Academics	5-8
Student Learning	5
Exceptional Student Education	6
Research, Title I & Engagement	7
Professional Learning & Support	8
Student Services	9
Safety & Security	10
Operations (Direct Reports)	11-19
Communications & Legislative Affairs	12
Facilities	13
Finance	14-15
Human Resources & Equity	16
Information Technology	17-18
Food Service/Transportation	19
Chief of Staff	20
Auditor	21
General Counsel	22

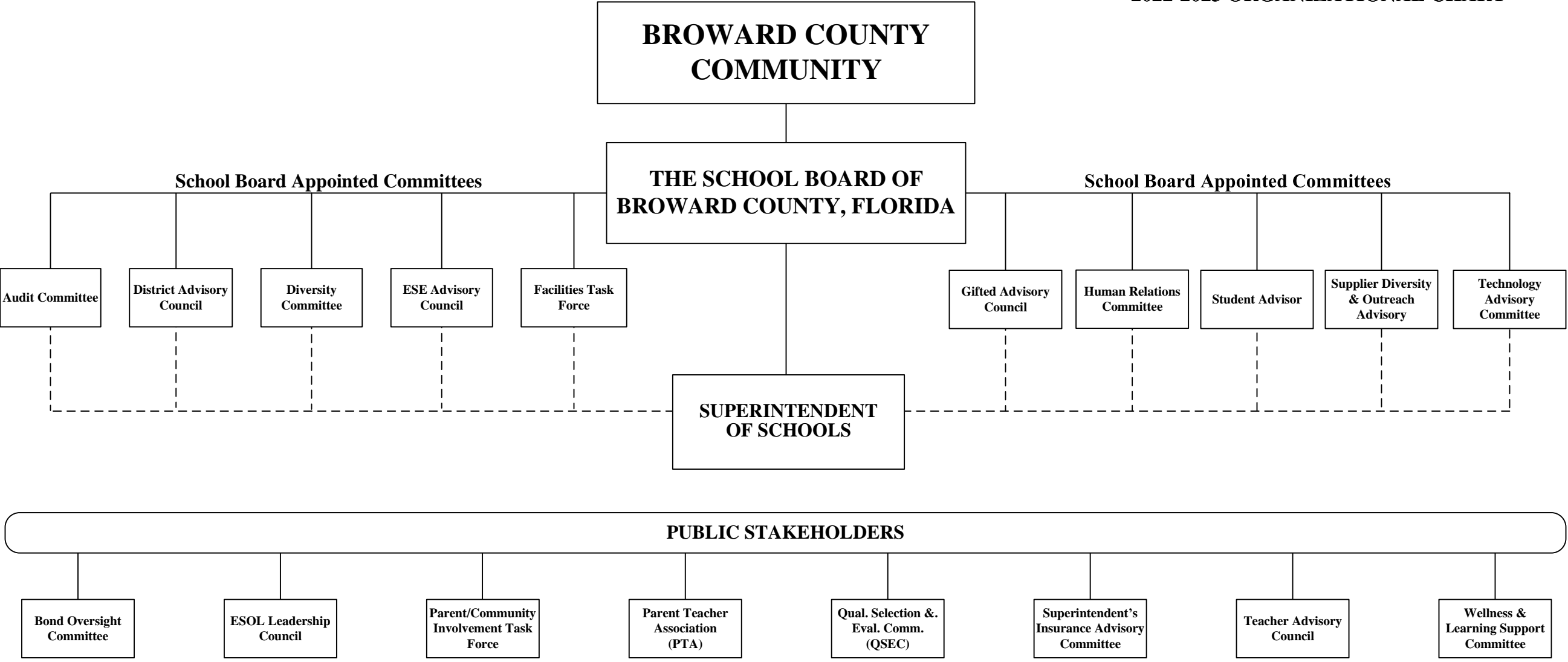
Funding from sources other than General Funds

Funding:

- C** Capital
- FS** Food Service
- Gr** Grant
- G** General
- R** Referendum

SCHOOL BOARD APPOINTED COMMITTEES & PUBLIC STAKEHOLDERS

**THE SCHOOL BOARD OF BROWARD COUNTY, FL
2022-2023 ORGANIZATIONAL CHART**



Funding from sources other than General Funds

Funding:

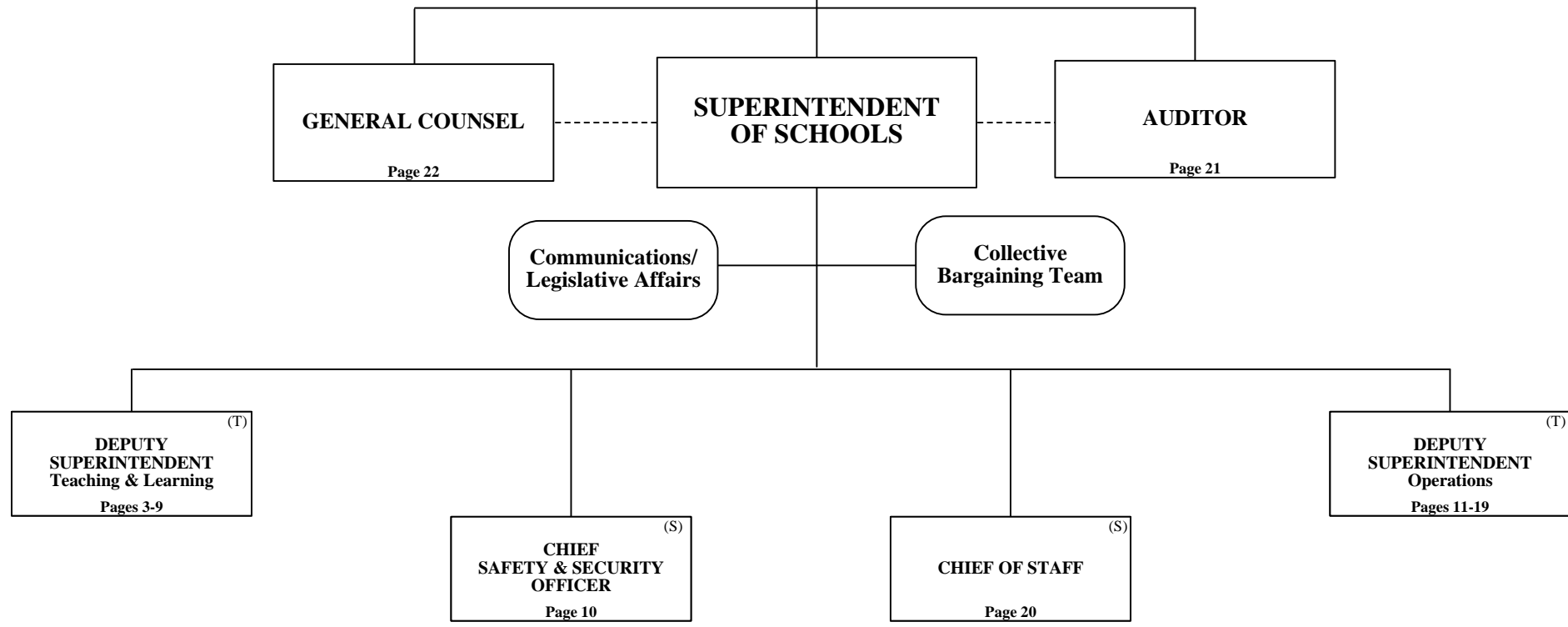
C Capital **FS** Food Service **Gr** Grant
G General **R** Referendum

SUPERINTENDENT

**BROWARD COUNTY
COMMUNITY**

**THE SCHOOL BOARD OF BROWARD COUNTY, FL
2022-2023 ORGANIZATIONAL CHART**

**THE SCHOOL BOARD OF
BROWARD COUNTY, FLORIDA**



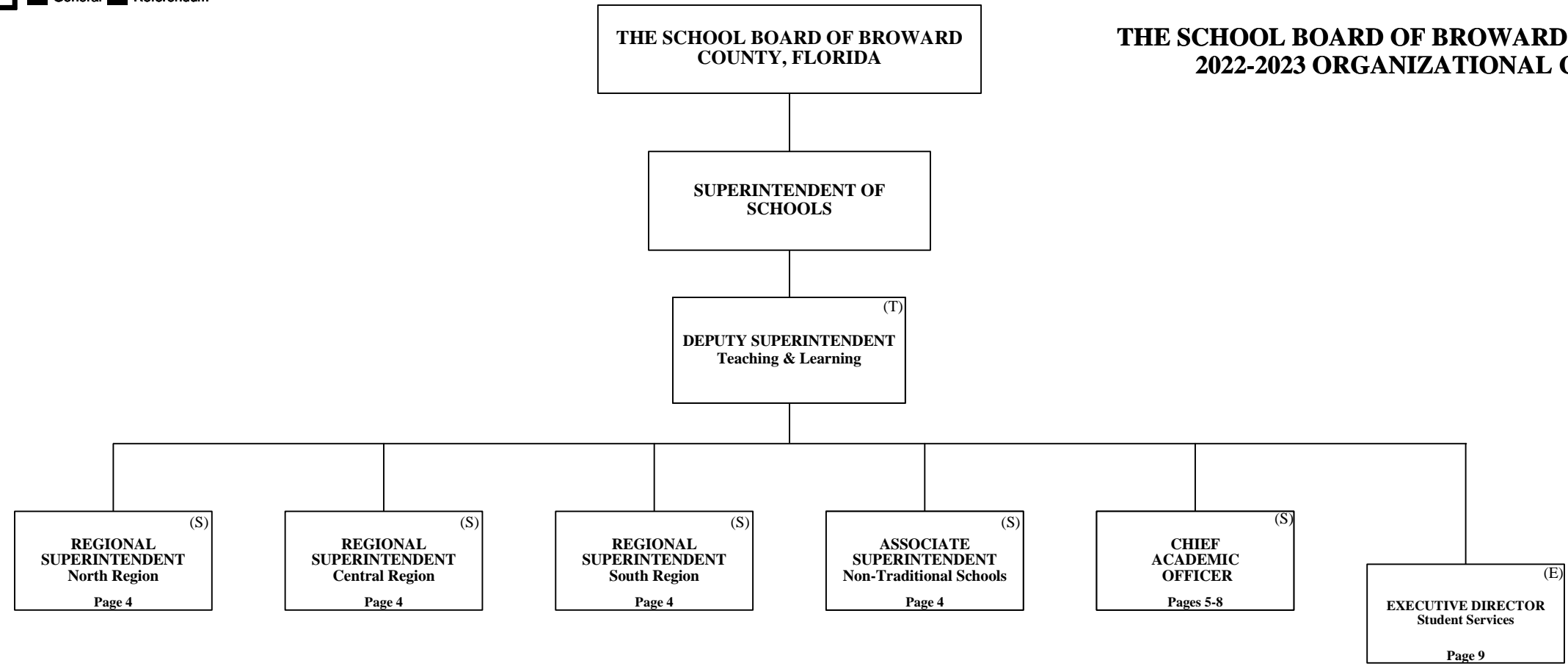
Funding from sources other than General Funds

Funding:

- C** Capital
- FS** Food Service
- Gr** Grant
- G** General
- R** Referendum

TEACHING & LEARNING

**THE SCHOOL BOARD OF BROWARD COUNTY, FL
2022-2023 ORGANIZATIONAL CHART**



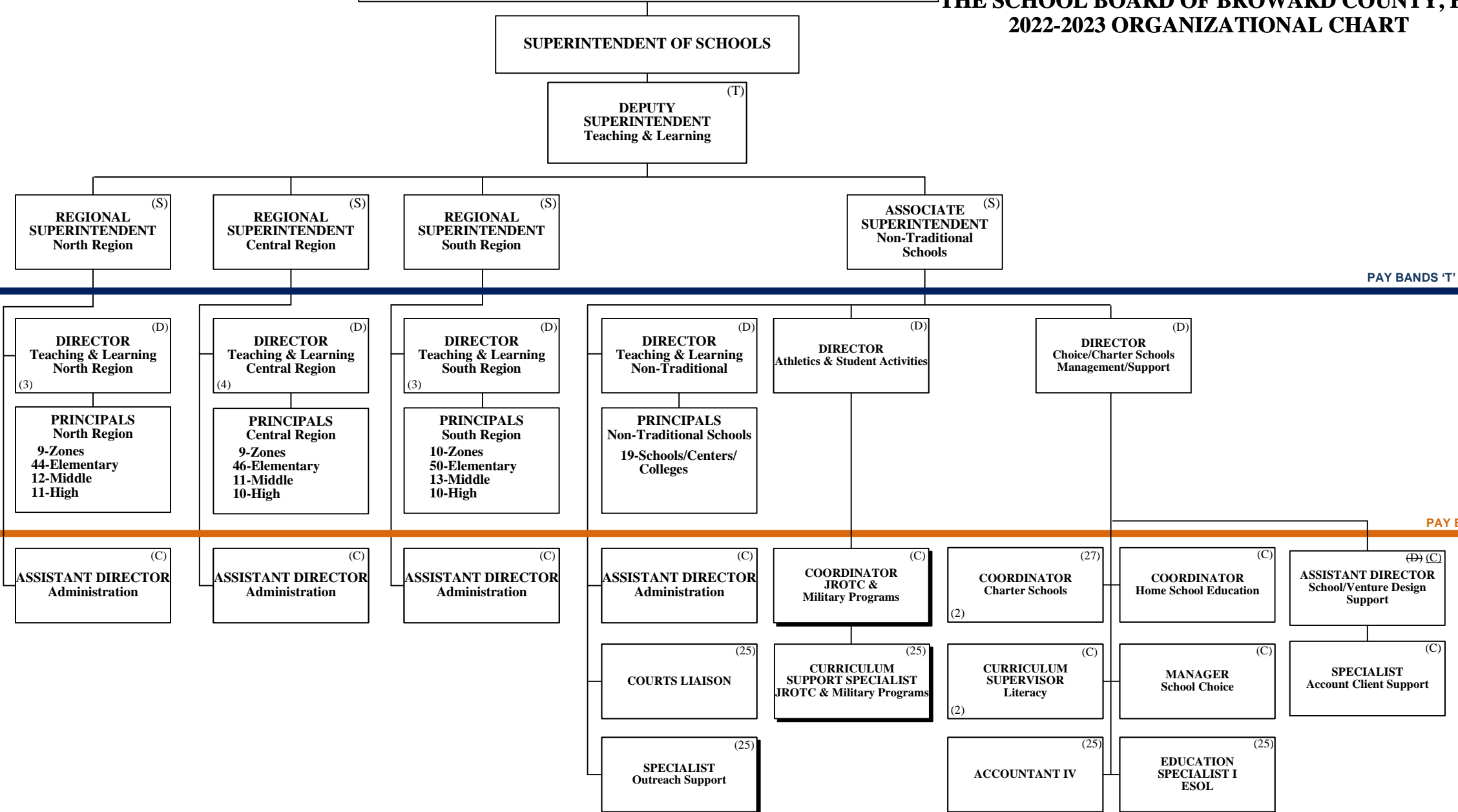
TEACHING & LEARNING Learning Communities

Funding from sources other than General Funds

Funding:
C Capital **FS** Food Service **Gr** Grant
G General **R** Referendum

THE SCHOOL BOARD OF BROWARD COUNTY, FLORIDA

THE SCHOOL BOARD OF BROWARD COUNTY, FL 2022-2023 ORGANIZATIONAL CHART



PAY BANDS 'T' 'S' & 'E'

PAY BAND 'D'

PAY BANDS 'C' & 'B'

Funding from sources other than General Funds

Funding:

- C** Capital
- FS** Food Service
- Gr** Grant
- G** General
- R** Referendum

TEACHING & LEARNING ACADEMICS Student Learning

THE SCHOOL BOARD OF BROWARD COUNTY, FLORIDA

SUPERINTENDENT OF SCHOOLS

DEPUTY SUPERINTENDENT
Teaching & Learning

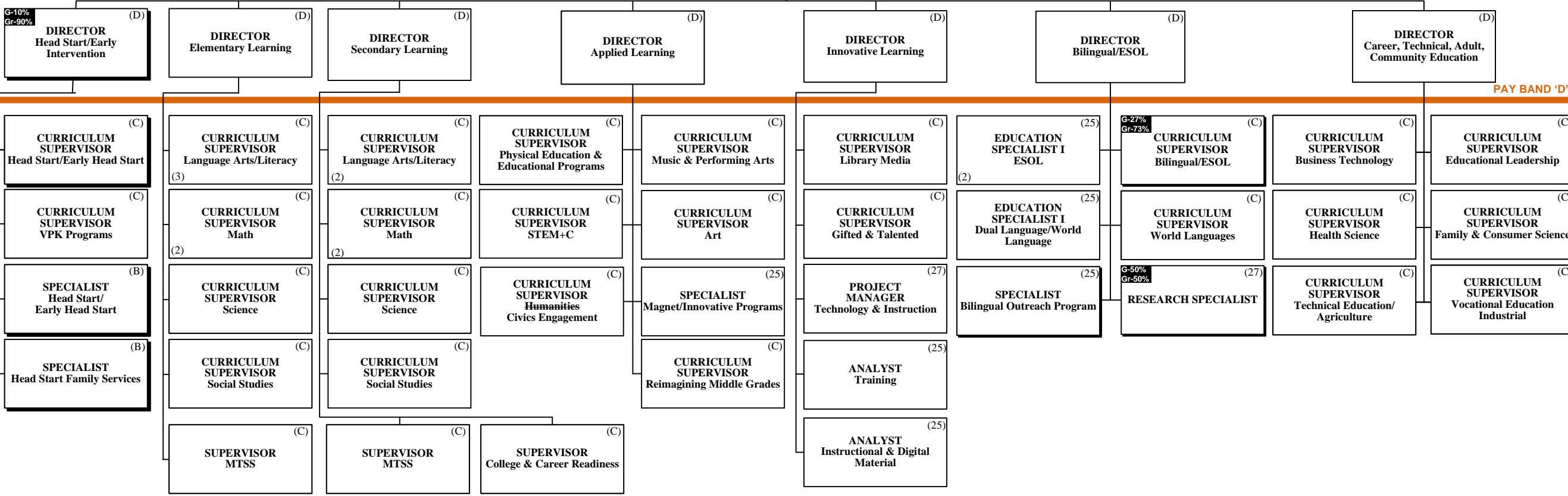
CHIEF
ACADEMIC
OFFICER

THE SCHOOL BOARD OF BROWARD COUNTY, FL 2022-2023 ORGANIZATIONAL CHART

PAY BANDS 'T' 'S' & 'E'

PAY BAND 'D'

PAY BANDS 'C' & 'B'

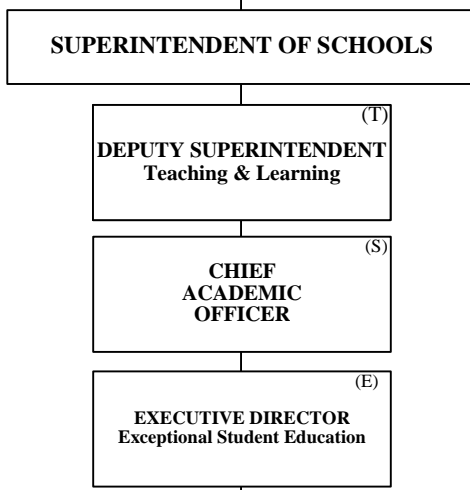


Funding from sources other than General Funds

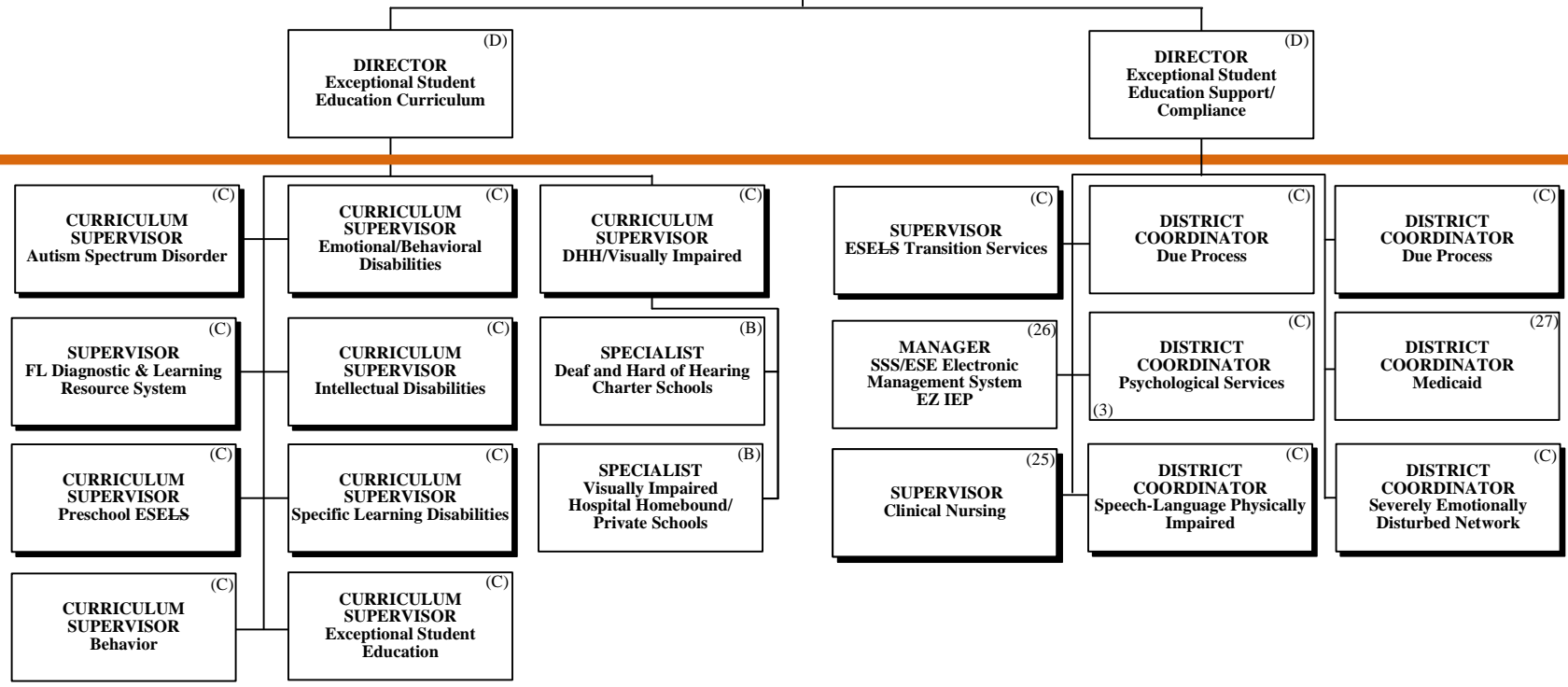
Funding:
C Capital **FS** Food Service **Gr** Grant
G General **R** Referendum

**TEACHING & LEARNING
 ACADEMICS
 Exceptional Student Education**
 THE SCHOOL BOARD OF BROWARD COUNTY, FLORIDA

**THE SCHOOL BOARD OF BROWARD COUNTY, FL
 2022-2023 ORGANIZATIONAL CHART**



PAY BANDS 'T' 'S' & 'E'



PAY BAND 'D'

PAY BANDS 'C' & 'B'

Funding from sources other than General Funds

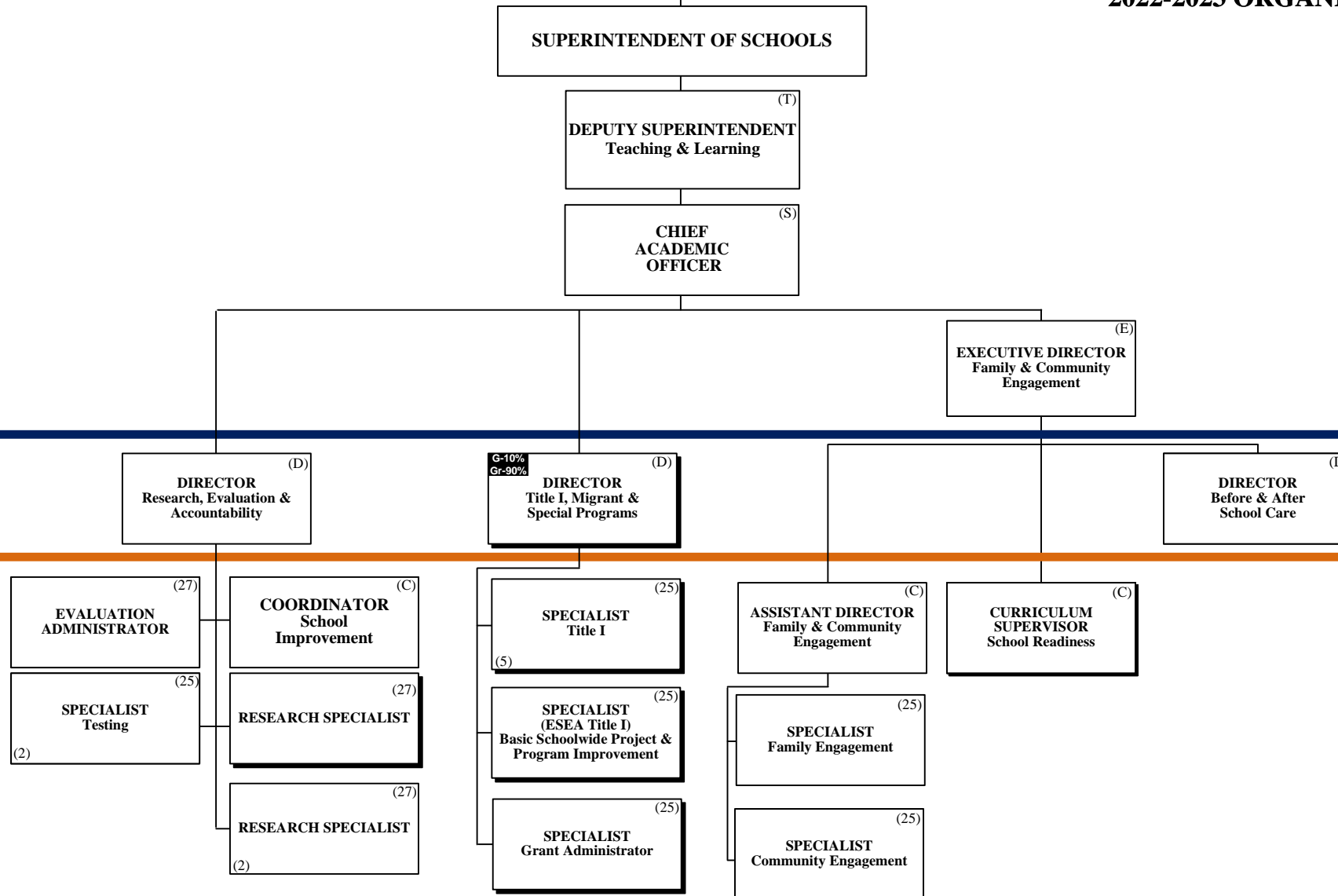
Funding:

- C** Capital
- FS** Food Service
- Gr** Grant
- G** General
- R** Referendum

TEACHING & LEARNING ACADEMICS Research, Title I & Engagement

THE SCHOOL BOARD OF BROWARD COUNTY, FL 2022-2023 ORGANIZATIONAL CHART

THE SCHOOL BOARD OF BROWARD COUNTY, FLORIDA



PAY BANDS 'T' 'S' & 'E'

PAY BAND 'D'

PAY BANDS 'C' & 'B'

**TEACHING & LEARNING
ACADEMICS
Professional Learning & Support**

THE SCHOOL BOARD OF BROWARD
COUNTY, FLORIDA

THE SCHOOL BOARD OF BROWARD COUNTY, FL
2022-2023 ORGANIZATIONAL CHART

Funding from
sources other than
General Funds

Funding:

C Capital **FS** Food Service **Gr** Grant
G General **R** Referendum

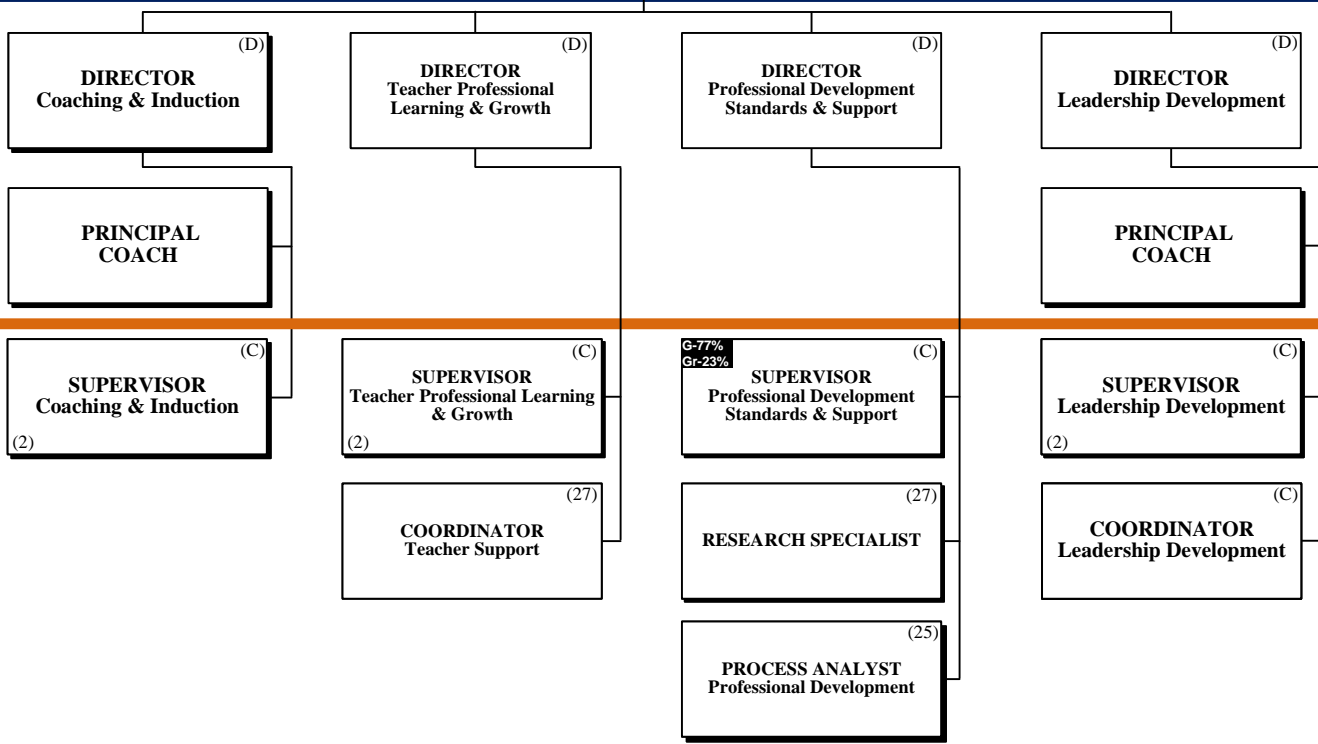
SUPERINTENDENT OF SCHOOLS

(T)
DEPUTY SUPERINTENDENT
Teaching & Learning

(S)
CHIEF
ACADEMIC
OFFICER

(E)
EXECUTIVE DIRECTOR
Professional Learning &
Support

PAY BANDS 'T' 'S' & 'E'



PAY BAND 'D'

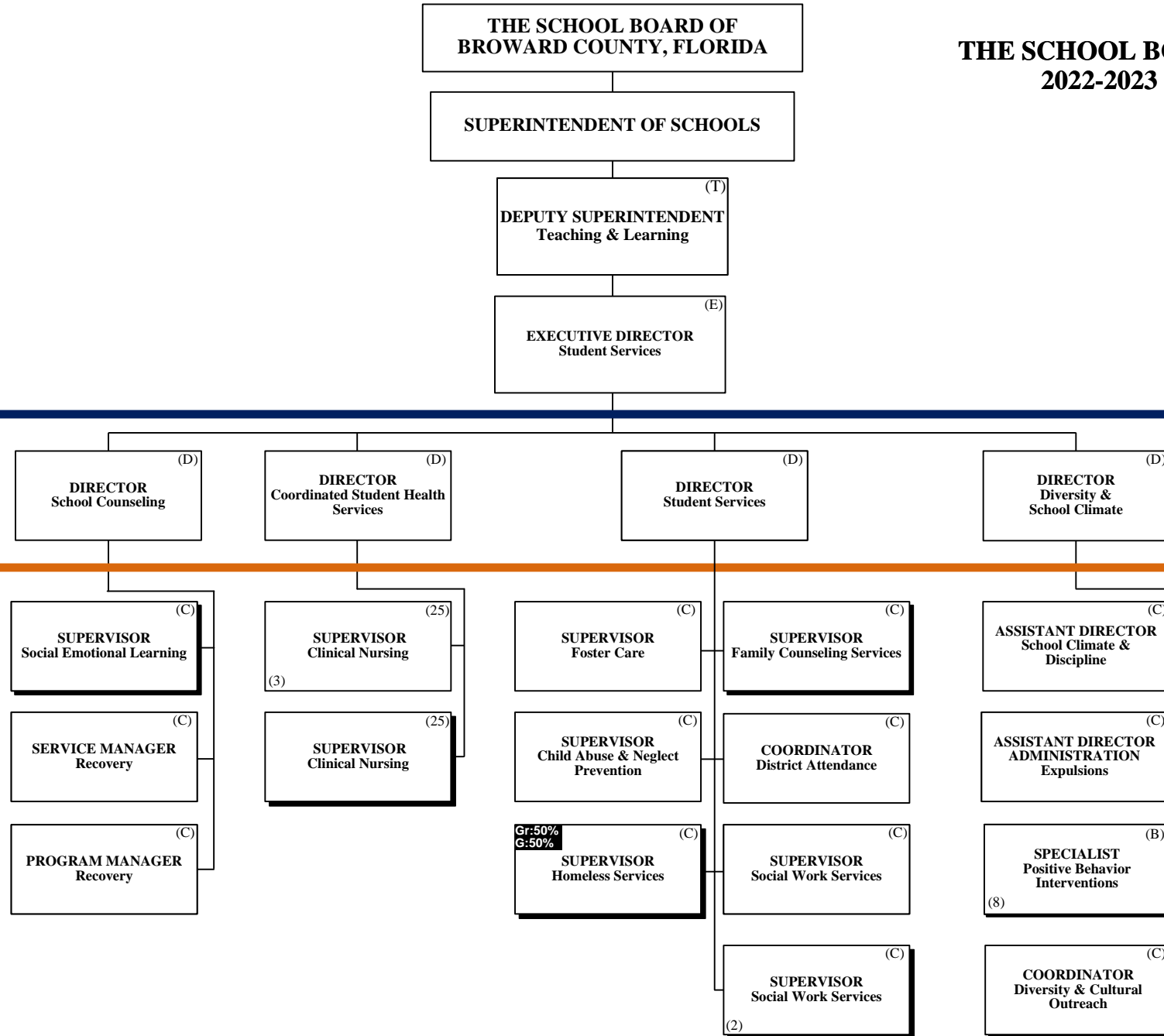
PAY BANDS 'C' & 'B'

Funding from sources other than General Funds

Funding:
C Capital **FS** Food Service **Gr** Grant
G General **R** Referendum

TEACHING & LEARNING Student Services

THE SCHOOL BOARD OF BROWARD COUNTY, FL 2022-2023 ORGANIZATIONAL CHART



PAY BANDS 'T' 'S' & 'E'

PAY BAND 'D'

PAY BANDS 'C' & 'B'

Funding from sources other than General Funds

Funding:

C Capital **FS** Food Service **Gr** Grant
G General **R** Referendum

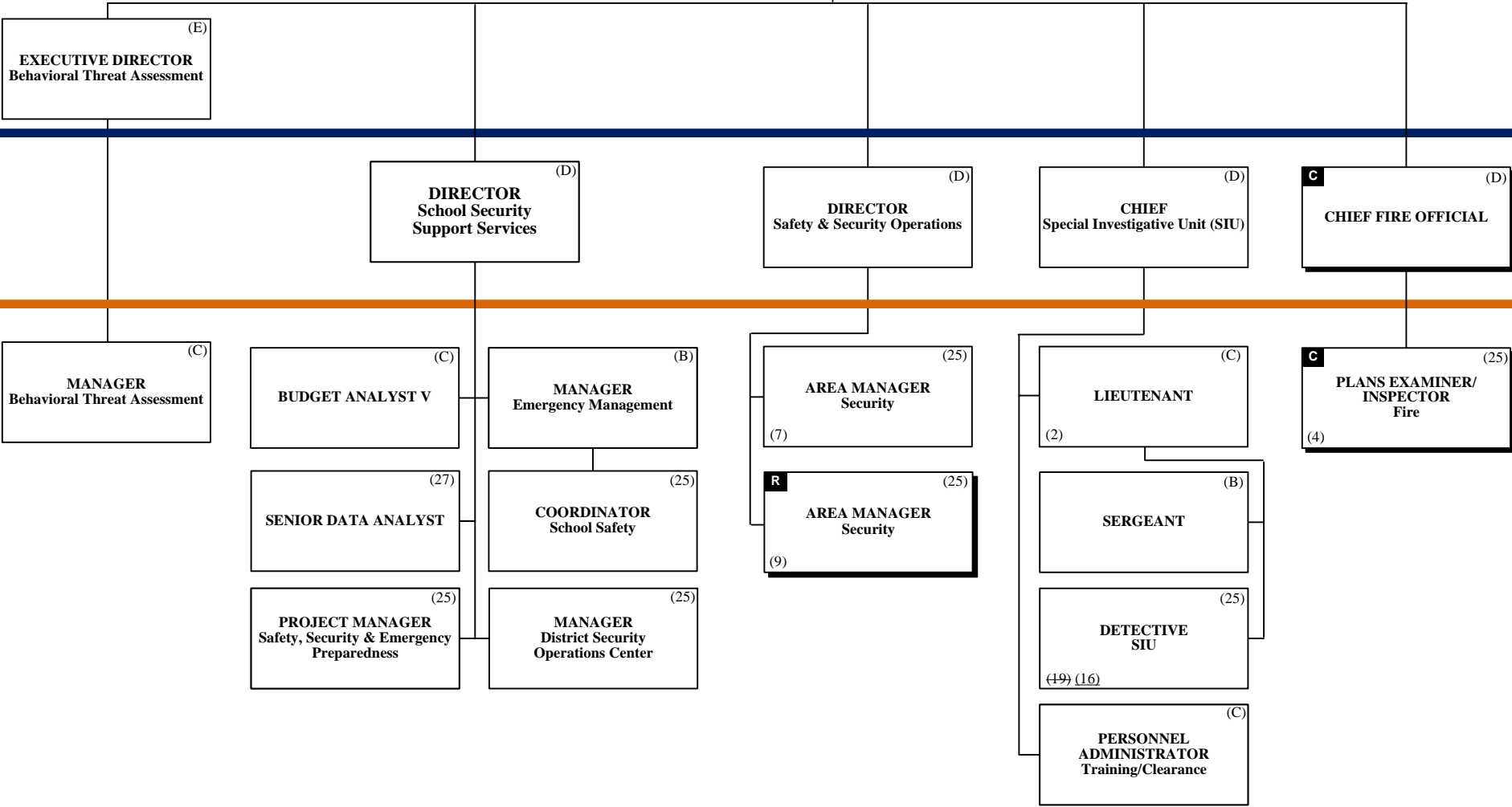
SAFETY & SECURITY

THE SCHOOL BOARD OF BROWARD COUNTY, FLORIDA

SUPERINTENDENT OF SCHOOLS

CHIEF SAFETY & SECURITY OFFICER (S)

THE SCHOOL BOARD OF BROWARD COUNTY, FL
 2022-2023 ORGANIZATIONAL CHART



PAY BANDS 'S' & 'E'

PAY BAND 'D'

ESMAB PAY BANDS 'C' & 'B'
 TSP PAY GRADES 25-28

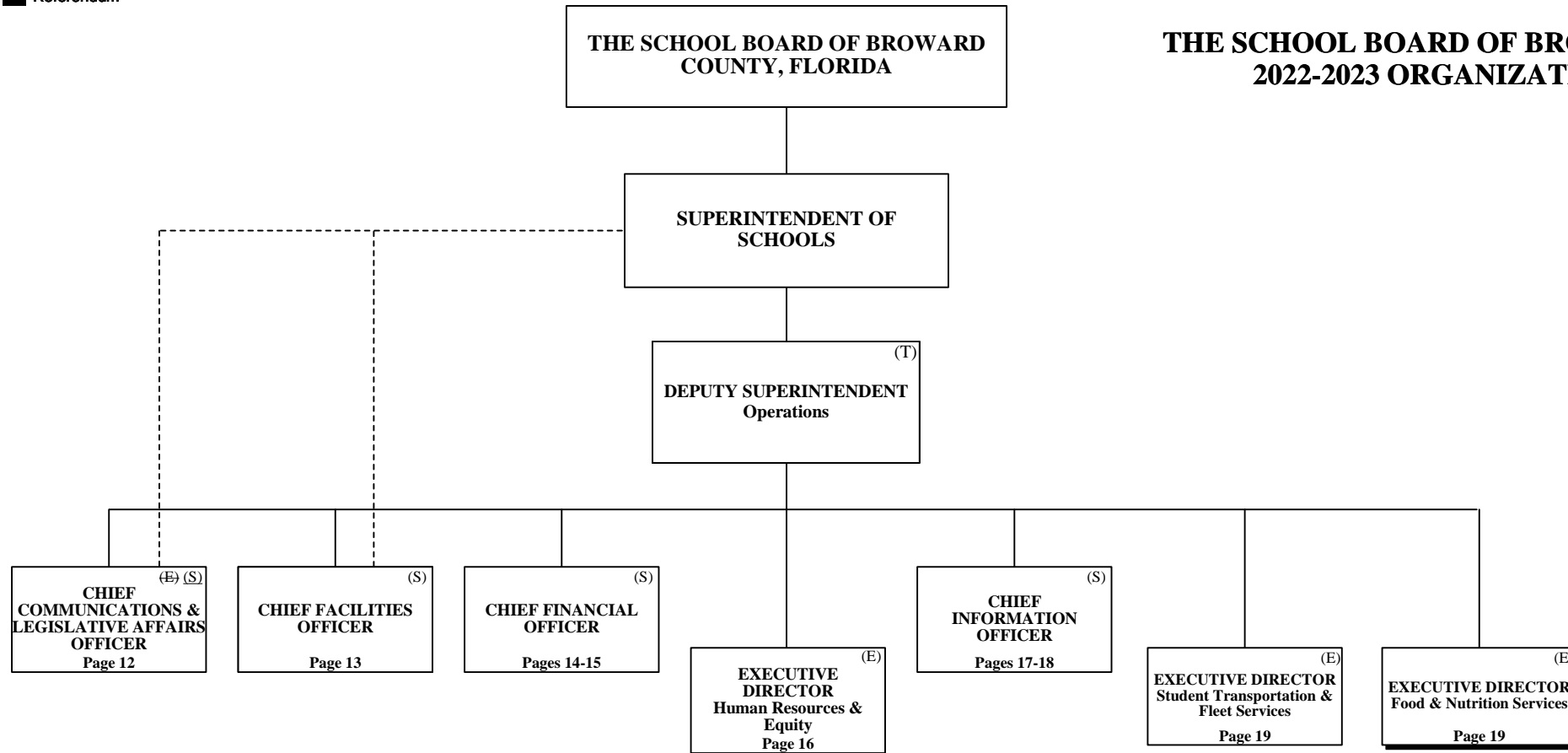
Funding from sources other than General Funds

Funding:

- C** Capital
- FS** Food Service
- Gr** Grant
- G** General
- R** Referendum

OPERATIONS

THE SCHOOL BOARD OF BROWARD COUNTY, FL 2022-2023 ORGANIZATIONAL CHART



Funding from sources other than General Funds

Funding:

- C** Capital
- FS** Food Service
- Gr** Grant
- G** General
- R** Referendum

OPERATIONS Communications & Legislative Affairs

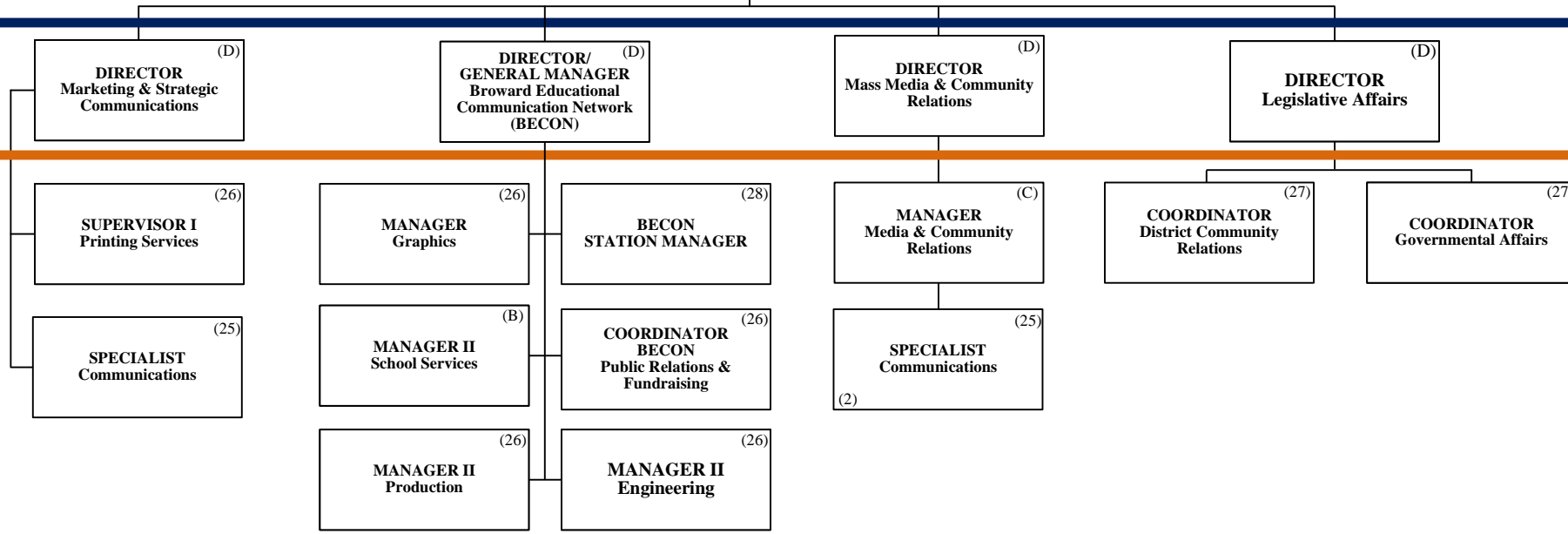
THE SCHOOL BOARD OF BROWARD COUNTY, FL 2022-2023 ORGANIZATIONAL CHART

THE SCHOOL BOARD OF BROWARD COUNTY, FLORIDA

SUPERINTENDENT OF SCHOOLS

DEPUTY SUPERINTENDENT
Operations ^(T)

CHIEF COMMUNICATIONS & LEGISLATIVE AFFAIRS OFFICER ^(S)



PAY BANDS 'T' 'S' & 'E'

PAY BAND 'D'

PAY BANDS 'C' & 'B'
PAY GRADES 25-28

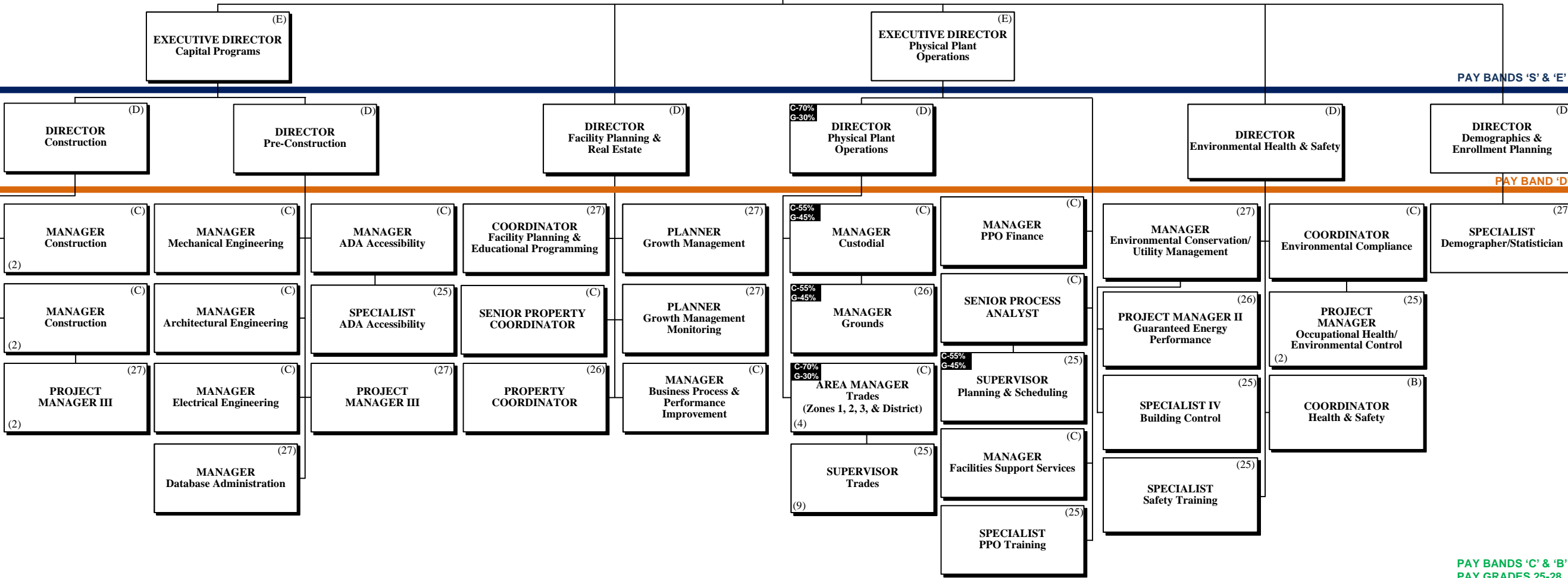
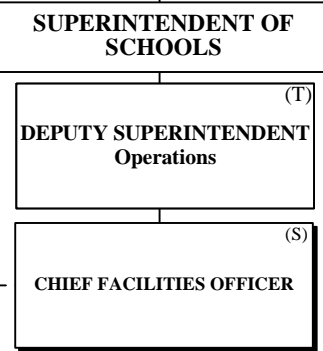
OPERATIONS Facilities

**THE SCHOOL BOARD OF BROWARD
COUNTY, FLORIDA**

THE SCHOOL BOARD OF BROWARD COUNTY, FL 2022-2023 ORGANIZATIONAL CHART

Funding from sources other than General Funds

Funding:
C Capital **FS** Food Service **Gr** Grant
G General **R** Referendum



OPERATIONS Finance

Funding from sources other than General Funds

Funding:

- C** Capital
- FS** Food Service
- Gr** Grant
- G** General
- R** Referendum

THE SCHOOL BOARD OF BROWARD COUNTY, FLORIDA

SUPERINTENDENT OF SCHOOLS

DEPUTY SUPERINTENDENT
Operations (T)

CHIEF FINANCIAL OFFICER (CFO) (S)
C-20%
G-80%

THE SCHOOL BOARD OF BROWARD COUNTY, FL 2022-2023 ORGANIZATIONAL CHART

PAY BANDS 'T' 'S' & 'E'

DIRECTOR
Accounting & Financial Reporting (D)

DIRECTOR
Budget (D)

TREASURER (D)
C-50%
G-50%

DIRECTOR
Payroll (D)

DIRECTOR
Capital Budget (D)

PAY BAND 'D'

ACCOUNTANT V (27)
C-50%
G-50%

MANAGER
Accounts Payable (27)

ASSISTANT DIRECTOR
Accounting & Financial Reporting (C)

ACCOUNTANT V (C)

ACCOUNTANT IV (25)
(5)

ASSISTANT DIRECTOR
School Budget Support (C)

BUSINESS ANALYST (27)
(2)

EVALUATION ADMINISTRATOR (27)
(5)

ASSISTANT DIRECTOR
District Budgets & Revenue (C)

BUDGET ANALYST V (C)

BUDGET ANALYST IV (B)
(2)

BUDGET ANALYST V (C)

BUDGET ANALYST IV (B)
C-50%
G-50%
(4)

MANAGER
Treasury (27)

SENIOR PAYROLL ANALYST (C)

SUPERVISOR
Payroll (C)

ACCOUNTANT IV (25)

ASSISTANT DIRECTOR
Capital Budget (C)

CAPITAL BUDGET ANALYST V (27)

CAPITAL BUDGET ANALYST IV (25)
(2)

CAPITAL NETWORK SYSTEMS ADMINISTRATOR (27)

CAPITAL PAYMENT REVIEW SUPERVISOR (27)

PAY BANDS 'C' & 'B'
PAY GRADES 25-28

OPERATIONS Finance

THE SCHOOL BOARD OF BROWARD
COUNTY, FLORIDA

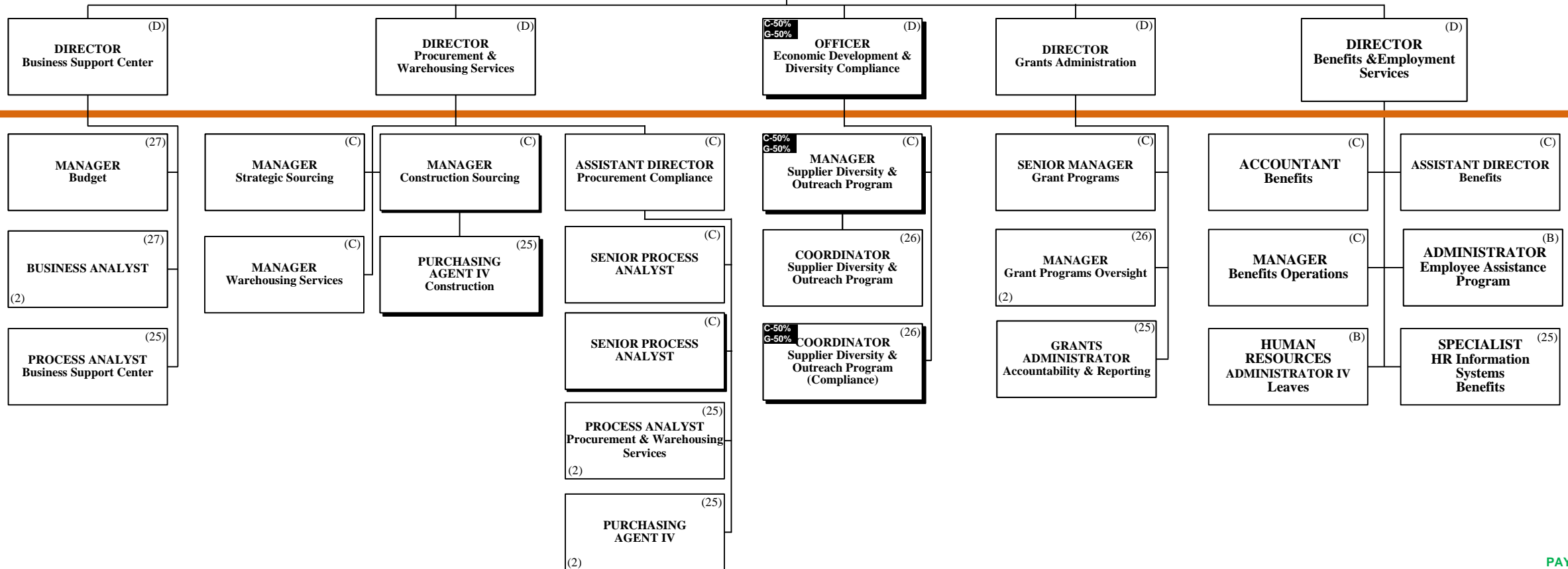
SUPERINTENDENT OF SCHOOLS

(T)
DEPUTY SUPERINTENDENT
Operations

C-20%
G-80% (S)
CHIEF
FINANCIAL
OFFICER (CFO)

THE SCHOOL BOARD OF BROWARD COUNTY, FL 2022-2023 ORGANIZATIONAL CHART

PAY BANDS 'T' 'S' & 'E'



PAY BAND 'D'

PAY BANDS 'C' & 'B'
PAY GRADES 25-28

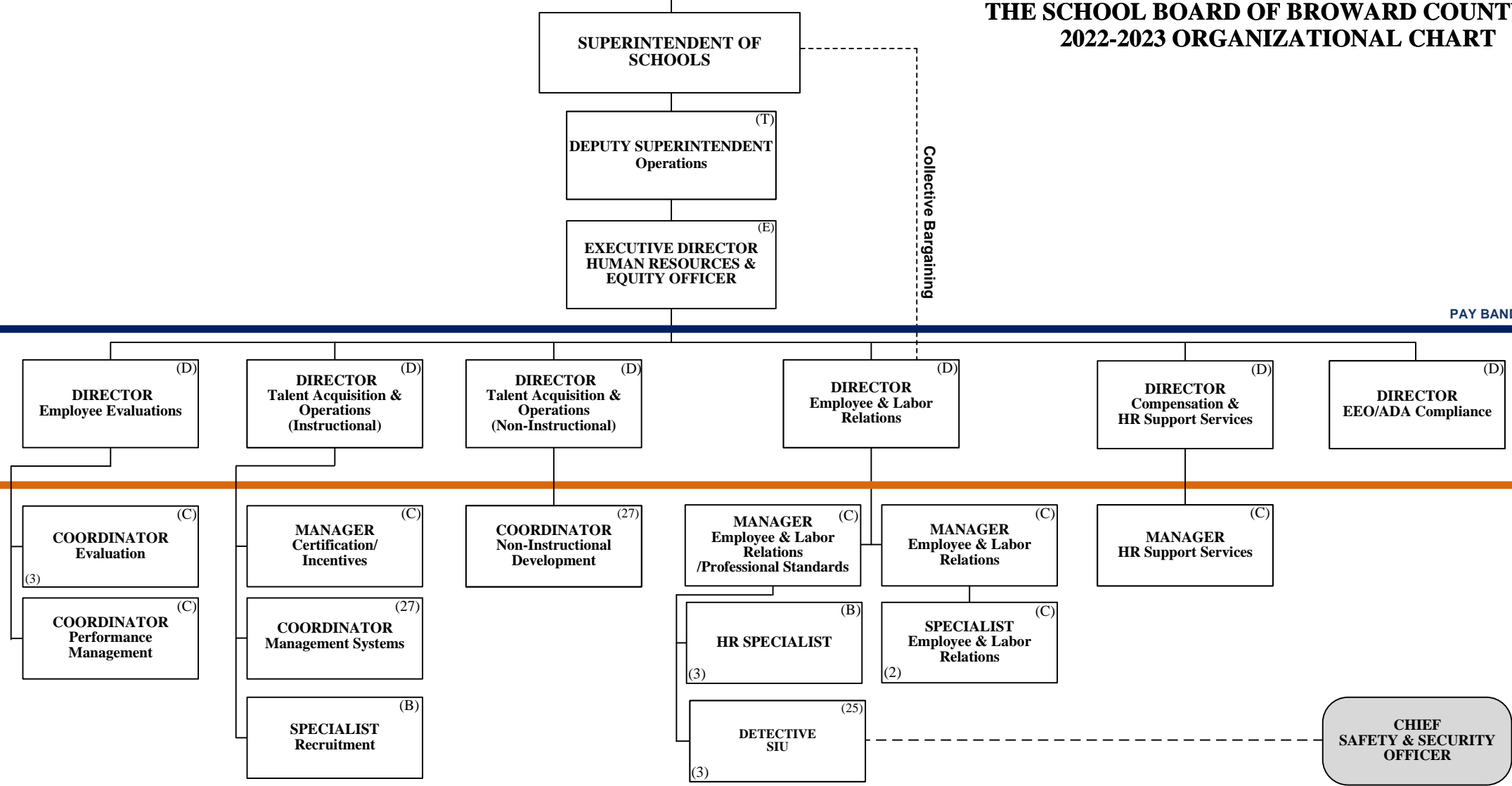
OPERATIONS
Human Resources & Equity

THE SCHOOL BOARD OF BROWARD
COUNTY, FLORIDA

THE SCHOOL BOARD OF BROWARD COUNTY, FL
2022-2023 ORGANIZATIONAL CHART

Funding from sources other than General Funds

Funding:
C Capital **FS** Food Service **Gr** Grant
G General **R** Referendum



PAY BANDS 'T' 'S' & 'E'

PAY BAND 'D'

PAY BANDS 'C' & 'B'
PAY GRADES 25-28

Funding from sources other than General Funds

Funding:

- C** Capital
- FS** Food Service
- Gr** Grant
- G** General
- R** Referendum



OPERATIONS Information Technology

THE SCHOOL BOARD OF BROWARD COUNTY, FL 2022-2023 ORGANIZATIONAL CHART

THE SCHOOL BOARD OF BROWARD COUNTY, FLORIDA

SUPERINTENDENT OF SCHOOLS

DEPUTY SUPERINTENDENT
Operations ^(T)

CHIEF INFORMATION OFFICER ^(S)

EXECUTIVE DIRECTOR
IT Services ^(E)

PAY BANDS 'T' 'S' & 'E'

DIRECTOR ^(D)
Planning, Implementation,
Training & Continuous
Improvement

DIRECTOR ^(D)
Technology Support
Services

PAY BAND 'D'

SENIOR PROJECT MANAGER
Office of the CIO ⁽²⁷⁾
₍₂₎

SENIOR PROCESS ANALYST ^(C)

COORDINATOR
District Technology ⁽²⁷⁾

SPECIALIST III
Systems Support ⁽²⁶⁾

PROCESS ANALYST
Change Management ⁽²⁵⁾

MANAGER
Finance ⁽²⁷⁾

PAY BANDS 'C' & 'B'
PAY GRADES 25-28

**OPERATIONS
Food Service/Transportation**

THE SCHOOL BOARD OF BROWARD
COUNTY, FLORIDA

**THE SCHOOL BOARD OF BROWARD COUNTY, FL
2022-2023 ORGANIZATIONAL CHART**

SUPERINTENDENT OF SCHOOLS

DEPUTY SUPERINTENDENT
Operations ^(T)

^(E)
EXECUTIVE DIRECTOR
Food & Nutrition Services

^(E)
EXECUTIVE DIRECTOR
Student Transportation &
Fleet Services

PAY BANDS 'S' & 'E'

^(D)
DIRECTOR
Student Transportation
& Fleet Services

PAY BAND 'D'

^(C)
ASSISTANT DIRECTOR
Food & Nutrition Services

^(C)
COORDINATOR
Food & Nutrition Services
(2)

^(B)
SUPERVISOR
Food & Nutrition Services
Information Systems

^(C)
ASSISTANT DIRECTOR
Transportation Operations

^(B)
MANAGER I
Transportation Terminal
(2)

^(C)
MANAGER I
Vehicle Maintenance

^(C)
MANAGER
Centralized Routing

^(B)
AREA
SUPERVISOR
Food & Nutrition Services
(11)

^(C)
FINANCE MANAGER
Food & Nutrition Services

⁽²⁶⁾
PROGRAM MANAGER
Nutrition, Education &
Training

^(C)
MANAGER II
Transportation Terminal
(2)

⁽²⁵⁾
SUPERVISOR
Special Needs
Transportation

⁽²⁵⁾
SUPERVISOR
Vehicle Maintenance
(2)

⁽²⁷⁾
SENIOR
DATA ANALYST
Transportation

^(B)
AREA
SUPERVISOR
Special Programs
Food & Nutrition Services
(2)

⁽²⁵⁾
SUPERVISOR
Food & Nutrition Services
Equipment & Supplies

⁽²⁷⁾
ACCOUNTANT V

PAY BANDS 'C' & 'B'
PAY GRADES 25-28

Funding from sources other than General Funds

Funding:
C Capital **FS** Food Service **Gr** Grant
G General **R** Referendum

CHIEF OF STAFF

THE SCHOOL BOARD OF BROWARD COUNTY, FLORIDA

SUPERINTENDENT OF SCHOOLS

CHIEF OF STAFF (S)

THE SCHOOL BOARD OF BROWARD COUNTY, FL 2022-2023 ORGANIZATIONAL CHART

Funding from sources other than General Funds

Funding:
C Capital **FS** Food Service **Gr** Grant
G General **R** Referendum

EXECUTIVE DIRECTOR
Strategic Initiative Management (E)

PAY BANDS 'S' & 'E'

CHIEF BUILDING OFFICIAL (D)

DIRECTOR Risk Management (D)

DIRECTOR Workers Compensation (D)

DIRECTOR Process Improvement (D)

DIRECTOR Performance Management (D)

PAY BAND 'D'

ASSISTANT DIRECTOR District Administrative Services (C)

SENIOR ENGINEER (27)

ASSISTANT CHIEF BUILDING OFFICIAL Inspections (27)

ASSISTANT CHIEF BUILDING OFFICIAL Plans (27)

MANAGER Workers Compensation Information Analytics (B)

MANAGER Workers Compensation Claims (C)

MANAGER Workers Compensation Medical Consumerism (C)

COORDINATOR Performance Management (C)

SENIOR INSPECTOR Building (26)

PLANS EXAMINER/INSPECTOR * Plumbing (25)
(2)

SENIOR PLANS EXAMINER (26)

SPECIALIST Workers Compensation Stay-at-Work/Return-to-Work (B)

SUPERVISOR Workers Compensation Claims (B)

SUPERVISOR Workers Compensation Medical Case Management (B)

COORDINATOR Strategic Management (C)

PLANS EXAMINER/INSPECTOR * Building (25)
(4)

PLANS EXAMINER/INSPECTOR * Electrical (25)
(2)

SENIOR PLANS EXAMINER Structural (26)

ADJUSTER Workers Compensation Claims (B)
(8)

CASE MANAGER Workers Compensation Medical Case (B)
(8)

PLANS EXAMINER/INSPECTOR * Roofing (25)
(2)

PLANS EXAMINER/INSPECTOR * Mechanical (25)
(2)

PAY BANDS 'C' & 'B'
PAY GRADES 25-28

* Additional external resources are utilized based on district projects' needs

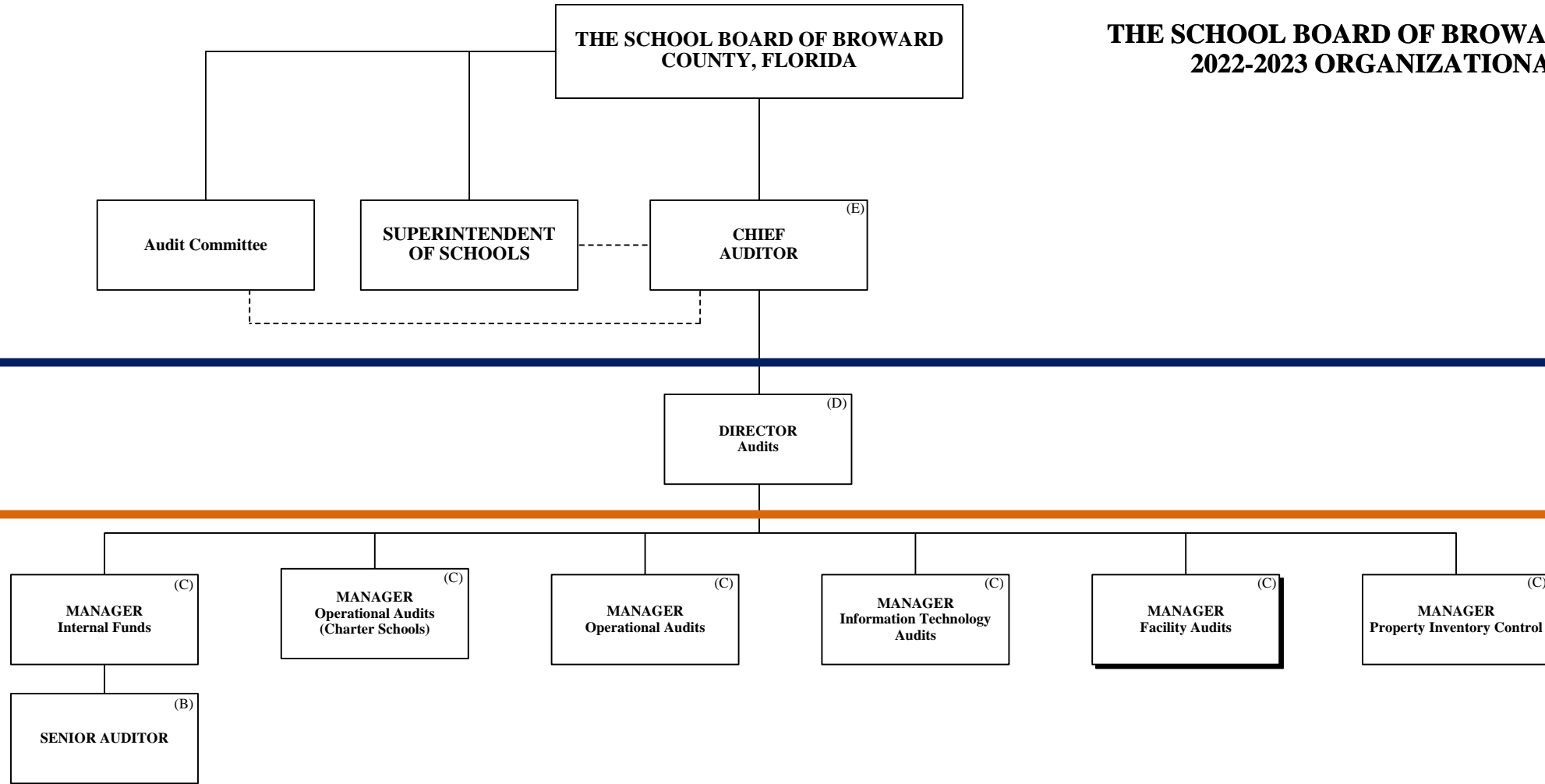
Funding from sources other than General Funds

Funding:

- C** Capital
- FS** Food Service
- Gr** Grant
- G** General
- R** Referendum

AUDITOR

**THE SCHOOL BOARD OF BROWARD COUNTY, FL
2022-2023 ORGANIZATIONAL CHART**



PAY BANDS 'S' & 'E'

PAY BAND 'D'

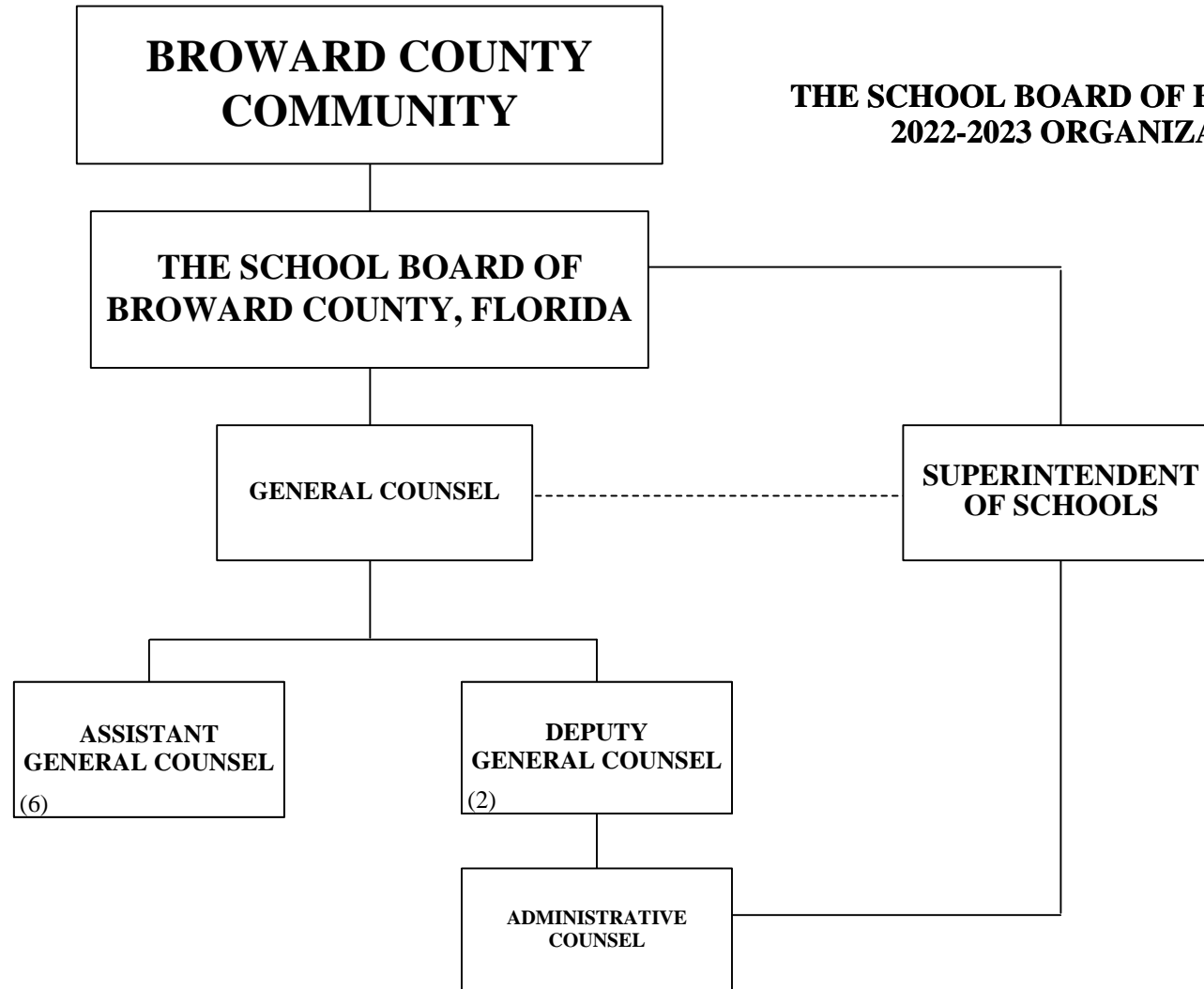
PAY BANDS 'C' & 'B'

GENERAL COUNSEL

Funding from sources other than General Funds

Funding:

- C** Capital
- FS** Food Service
- Gr** Grant
- G** General
- R** Referendum



**THE SCHOOL BOARD OF BROWARD COUNTY, FL
2022-2023 ORGANIZATIONAL CHART**