

SMART PROGRAM

AT A GLANCE

PUBLISHED APRIL 2020

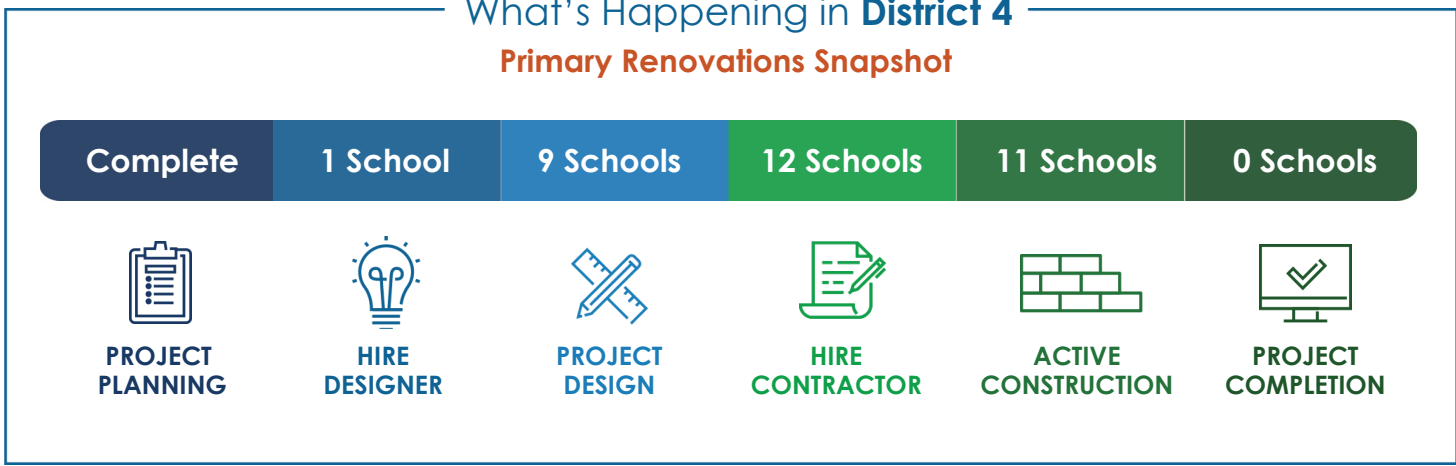


DISTRICT 4



What's Happening in **District 4**

Primary Renovations Snapshot



Data through February 29, 2020

DISTRICT 4

SMART PROGRAM AT A GLANCE

The SMART Bond Program focuses on improving schools and the educational experience of students and faculty at 232 SMART funded Broward County Public Schools, in the overarching categories of Safety, Music & Art, Athletics, Renovation, and Technology.

DISTRICT HIGHLIGHTS

District 4 has seen plenty of activity with construction beginning at the following schools:

- Forest Glen Middle School
- Maplewood Elementary School
- Riverglades Elementary School



SCHOOL CHOICE ENHANCEMENT PROGRAM

As part of the School Choice Enhancement Program (SCEP), schools are allocated \$100,000 to spend on custom improvements to their campuses and curriculums.

SCEP DISTRICTWIDE

32

SCHOOLS UNDERWAY OR COMPLETE

10 SCHOOLS COMPLETE

17 SCHOOLS IN IMPLEMENTATION

5 SCHOOLS IN PLANNING/DESIGN



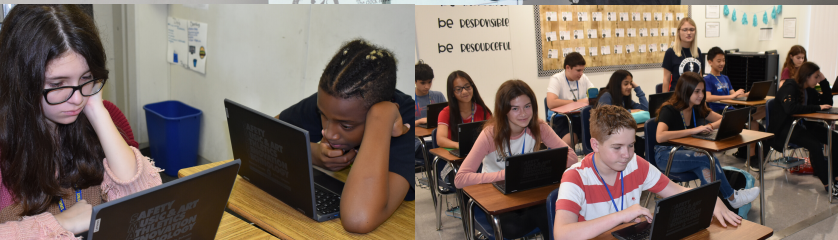
SPOTLIGHT ON SCEP: WESTGLADES MIDDLE SCHOOL

In addition to the usual classroom technology, students at Westglades Middle School also received a projector that's sure to increase participation.

Projectors allow for easier note-taking due to its widescreen view and the ability to go back to previous lessons with ease.

OTHER ITEMS PURCHASED INCLUDE:

Classroom projectors, laptops for students, teachers, and administrators, laptop carts, and cart wiring.



FEATURED PRIMARY RENOVATIONS

FOREST GLEN MIDDLE SCHOOL



Teamwork makes the dream work! Contractors complete the noisier work such as roofing demolitions overnight, so that the day time crew can continue the less disruptive repairs.



FOREST HILLS ELEMENTARY SCHOOL

The group restrooms and fire alarm system has been upgraded while media center renovations are nearly complete with only a few remaining fixtures left to install.



MORROW ELEMENTARY SCHOOL



In addition to the installation of a new fire alarm system, new air handlers have been installed to better control classroom temperatures.



PINWOOD ELEMENTARY SCHOOL

Like many schools, roofing repairs are in progress at Pinewood Elementary. Also underway is the installation of a new fire sprinkler system.



TAMARAC ELEMENTARY SCHOOL



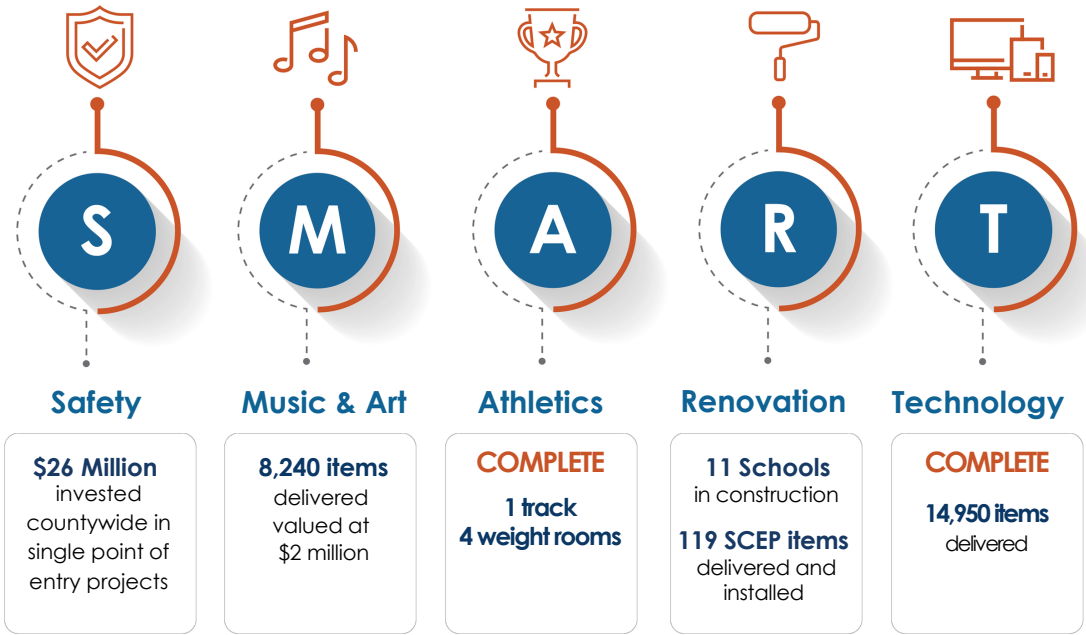
Spotting friends on the way to class just got easier with the new overhead lighting in the canopy walkway. In addition to upgraded lights, a new HVAC system was installed and roofing repairs will begin soon.



In the midst of Covid 19, we would like to thank our SMART Team and our contractors who have remained hard at work on our school campuses. Though we remain committed to providing BCPS students and staff with enhanced learning environments, the health and safety of our team is essential. All guidelines provided by the CDC and other health professionals are currently in place to ensure that we can continue to strive for a SMART Future under the safest possible conditions. We appreciate the support of the community as we aim to follow through with our commitments during this uncertain time.



SMART by the Numbers | **District 4**



Established 1915
BROWARD
County Public Schools



**SMART INVESTMENTS
LEAD TO SMART STUDENTS.**

STAY INFORMED!

EMAIL

SMARTFutures@BrowardSchools.com

FOLLOW US!



@BCPS_SMART



/BCPSSMART



@BCPS_SMART

**11 SCHOOLS
IN CONSTRUCTION**

- Broadview Elementary School
- Challenger Elementary School
- Coral Glades High School
- Coral Park Elementary School
- Coral Springs High School
- Coral Springs Middle School
- Coral Springs Pre K-8
- Country Hills Elementary School
- **Eagle Ridge Elementary School**
- **Forest Glen Middle School**
- **Forest Hills Elementary School**
- Heron Heights Elementary School
- J.P. Taravella High School
- James S. Hunt Elementary School
- **Maplewood Elementary School**
- **Marjory Stoneman Douglas High School** (not SMART Funded)**
- Millennium 6-12 Collegiate Academy
- **Morrow Elementary School**
- North Lauderdale Pre K-8
- Park Springs Elementary School
- Park Trails Elementary School
- Parkside Elementary School
- **Pinewood Elementary School**
- **Ramblewood Elementary School**
- Ramblewood Middle School
- **Riverglades Elementary School**
- Riverside Elementary School
- Sawgrass Springs Middle School
- Silver Lakes Middle School
- **Tamarac Elementary School**
- **Westchester Elementary School**
- Westglades Middle School

*Bold schools are in construction

**The scopes of work for some projects have been separated to improve timing and efficiency. This may lead to a school being counted more than once in data provided.