

**THE SCHOOL BOARD OF BROWARD COUNTY, FLORIDA
OFFICE OF THE SUPERINTENDENT**

**ROBERT W. RUNCIE
SUPERINTENDENT OF SCHOOLS**

[SIGNATURES ON FILE](#)

January 5, 2016

TO: School Board Members

FROM: Maurice L. Woods
Chief Strategy & Operations Officer

VIA: Robert W. Runcie
Superintendent of Schools

SUBJECT: **HIGH SCHOOL GRADUATION RATES, 2014-15**

On January 5, 2016, the Florida Department of Education (FDOE) released Federal graduation rates for Florida and the 67 Florida school districts. State and district data are located online at the FDOE Education Information & Accountability Services Website (<http://www.fldoe.org/core/fileparse.php/7584/urlt/GraduationRates1415Final.pdf>).

- Florida's Federal graduation rate was 77.8% in 2014-15, which is an increase of 1.7 percentage points from 76.1% in 2013-14.
- Broward County Public Schools (BCPS) achieved the highest graduation rates so far since Florida adopted the Federal Uniform Graduation Rate method in 2010-11.
- BCPS Federal graduation rate was **76.6% in 2014-15**, which is an increase of 2.4 percentage points from 74.2% in 2013-14.
- BCPS traditional high schools achieved a graduation rate of **91.7% in 2014-15**, which exceeded the 88.7% achieved in 2013-14.
- Black (67.3%), Hispanic (80.0%), and White (85.2%) students improved their graduation rates. **Black students showed a greater improvement in graduation rate, closing the gap with White students by 1.6 percentage points.**
- 23 traditional high schools had a graduation rate higher than 90% or more.
- **31 of 33 traditional high schools improved or maintained their graduation rate.**
- Two traditional high schools—Coconut Creek and Boyd Anderson—increased their graduation rates by more than 10 percentage points compared to 2013-14. Atlantic Technical College, College Academy, and Pompano Beach High School achieved graduation rates of 100%.

Table 1 displays the historical graduation rates for Florida's five largest districts and the state overall. In 2014-15, Broward had a higher graduation rate than Hillsborough, but lower graduation rates than Miami-Dade, Orange, Palm Beach, and Florida. All of the big five districts increased their graduation rates; Broward increased at a higher rate than Miami-Dade, Palm Beach, and the state overall.

HIGH SCHOOL GRADUATION RATES, 2014-15

January 5, 2016

Page 2

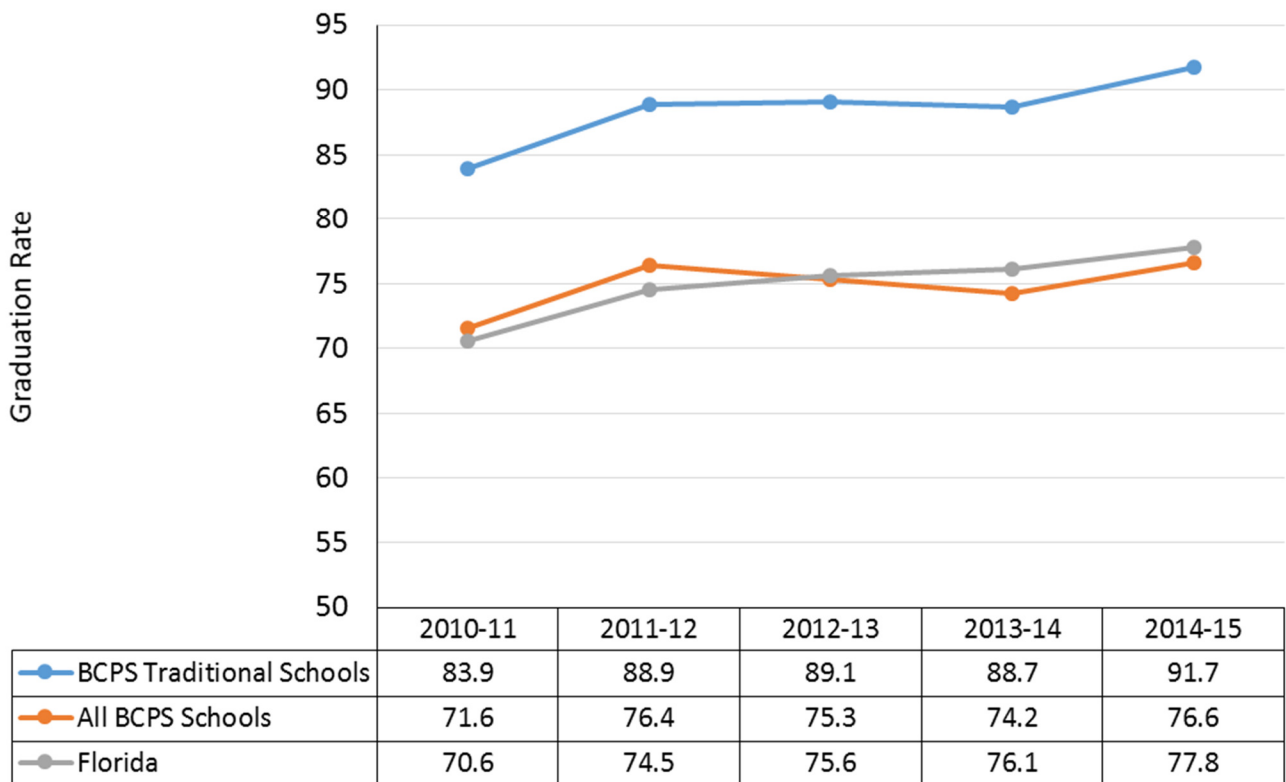
Table 1

Comparison of BCPS Federal Graduation Rates with Other Large Florida School Districts, 2010-11 through 2014-15

	2010-11	2011-12	2012-13	2013-14	2014-15	Change 2013-14 to 2014-15
Broward	71.6	76.4	75.3	74.2	76.6	2.4
Hillsborough	69.3	72.6	74.1	73.5	76.0	2.5
Miami-Dade	71.3	76.0	77.2	76.6	78.1	1.5
Orange	71.4	73.9	75.9	74.6	77.6	3.0
Palm Beach	74.3	77.0	76.3	77.9	79.4	1.5
Florida	70.6	74.5	75.6	76.1	77.8	1.7

Figure 1 illustrates the five-year historical graduation rates for BCPS traditional high schools, BCPS overall (including centers and charter schools), and Florida. BCPS traditional schools achieved graduation rates that were consistently higher than the state, reaching 91.7% in 2014-15. The overall BCPS graduation rate increased at a faster rate from 2013-14 to 2014-15 (2.4 percentage points) compared to the state overall (1.7 percentage points).

Figure 1. Historical Graduation Rates



HIGH SCHOOL GRADUATION RATES, 2014-15

January 5, 2016

Page 3

Table 2 shows the graduation rates for the major race/ethnicity groups served in BCPS. The graduation rate increased for all three groups; however, Black students showed a greater increase than did their peers. In 2014-15, the gap between Black and White students decreased by 1.6 percentage points and the gap between Hispanic and White students was stable.

Table 2

Graduation Rates and Gaps by Major Race/Ethnicity Groups, 2013-14 and 2014-15

	2013-14		2014-15		Change in Graduation Rate Gap 2013-14 to 2014-15
	Graduation Rate	Gap	Graduation Rate	Gap	
White, Non-Hispanic	83.4	--	85.2	--	--
Black, Non-Hispanic	63.9	19.5	67.3	17.9	-1.6
Hispanic	77.9	5.5	80.0	5.2	-0.3

Appendix A shows the graduation rates for the five most recent cohorts attending Broward. Review of the appendix shows that **23 traditional high schools had a graduation rate of 90% or higher**. Thirty-one of BCPS' traditional high schools improved or maintained their graduation rate. Coconut Creek High School and Boyd Anderson High school improved their graduation rates by more than 10 percentage points (19.1 and 11.8 percentage points, respectively). Atlantic Technical College, College Academy, and Pompano Beach High School all attained 100% graduation rates.

The Florida Department of Education issued data for each district and school through the PK-12 Education Information Portal (<https://edstats.fldoe.org/SASPortal/main.do>). **If you have any questions regarding this release, please contact Research Specialist Dr. Russell Clement, Student Assessment & Research at (754) 321-2515.** This memorandum and a school-by-school report can be accessed on the Student Assessment & Research Website at <http://www.broward.k12.fl.us/sar/Releases.htm>.

RWR/MLW/NB/RWC:rs

cc: Senior Leadership Team
Directors, School Performance & Accountability
High School Principals

References

Florida Department of Education. (2016). *Florida's High School Cohort Graduation Rate*. Retrieved January 5, 2016, from <http://www.fldoe.org/core/fileparse.php/7584/urlt/GraduationRates1415Final.pdf>.

HIGH SCHOOL GRADUATION RATES, 2014-15

January 5, 2016

Page 4

Appendix A
 Graduation Rates by School, 2010-11 to 2014-15

School	Graduation Cohort					Change from 2013-14 to 2014-15
	2010-11	2011-12	2012-13	2013-14	2014-15	
Traditional High Schools						
ATLANTIC TECHNICAL COLLEGE	95.8%	96.8%	98.4%	99.2%	100.0%	0.8
BLANCHE ELY HIGH SCHOOL	81.1%	87.3%	84.4%	90.3%	90.9%	0.7
BOYD H. ANDERSON HIGH SCHOOL	68.1%	78.3%	84.3%	79.5%	91.3%	11.8
BROWARD VIRTUAL FRANCHISE	72.4%	84.7%	91.5%	92.4%	95.3%	2.9
CHARLES W FLANAGAN HIGH SCHOOL	85.1%	93.9%	92.3%	90.8%	93.4%	2.7
COCONUT CREEK HIGH SCHOOL	70.9%	76.5%	69.4%	63.3%	82.4%	19.1
COLLEGE ACADEMY AT BCC	100.0%	100.0%	100.0%	100.0%	100.0%	0.0
COOPER CITY HIGH SCHOOL	89.9%	95.2%	94.7%	91.2%	93.8%	2.6
CORAL GLADES HIGH SCHOOL	81.3%	83.8%	85.2%	87.1%	91.0%	4.0
CORAL SPRINGS HIGH SCHOOL	83.5%	87.3%	89.5%	88.4%	89.6%	1.2
CYPRESS BAY HIGH SCHOOL	97.3%	96.8%	94.7%	94.9%	97.0%	2.1
DEERFIELD BEACH HIGH SCHOOL	71.8%	78.9%	85.7%	82.9%	85.1%	2.2
DILLARD 6-12	81.1%	91.0%	90.6%	85.9%	93.7%	7.8
EVERGLADES HIGH SCHOOL	82.1%	86.9%	88.4%	85.6%	89.9%	4.2
FORT LAUDERDALE HIGH SCHOOL	76.4%	85.2%	91.6%	91.4%	93.8%	2.4
HALLANDALE HIGH SCHOOL	84.2%	89.9%	89.1%	85.6%	90.7%	5.1
HOLLYWOOD HILLS HIGH SCHOOL	76.2%	78.0%	76.4%	88.1%	90.4%	2.3
J. P. TARAVELLA HIGH SCHOOL	88.8%	87.9%	88.3%	90.1%	89.3%	-0.8
MARJORY STONEMAN DOUGLAS HS	96.3%	95.3%	94.4%	94.3%	94.3%	0.0
MCARTHUR HIGH SCHOOL	83.9%	89.8%	89.4%	87.6%	89.9%	2.2
MIRAMAR HIGH SCHOOL	86.3%	90.4%	90.1%	86.5%	91.8%	5.4
MONARCH HIGH SCHOOL	89.2%	88.3%	88.1%	86.7%	91.1%	4.5
NORTHEAST HIGH SCHOOL	81.0%	92.9%	92.4%	85.1%	85.1%	-0.1
NOVA HIGH SCHOOL	91.6%	94.9%	94.5%	94.3%	95.1%	0.9
PIPER HIGH SCHOOL	76.6%	82.2%	84.9%	81.9%	84.0%	2.1
PLANTATION HIGH SCHOOL	71.0%	88.9%	84.7%	88.7%	90.3%	1.7
POMPANO BEACH H. S.	98.9%	99.7%	99.3%	100.0%	100.0%	0.0
SOUTH BROWARD HIGH SCHOOL	75.2%	84.1%	80.8%	79.6%	86.5%	6.9
SOUTH PLANTATION HIGH SCHOOL	80.4%	77.9%	86.8%	87.5%	90.3%	2.8
STRANAHAN HIGH SCHOOL	75.5%	84.2%	86.6%	89.5%	85.7%	-3.8
WEST BROWARD HIGH SCHOOL	97.1%	96.1%	96.4%	92.4%	97.0%	4.5
WESTERN HIGH SCHOOL	86.9%	89.8%	89.3%	89.7%	94.7%	5.0
WILLIAM T. MCFATTER TECHNICAL COLLEGE	97.6%	97.7%	94.6%	99.3%	99.3%	0.0

table continues

HIGH SCHOOL GRADUATION RATES, 2014-15

January 5, 2016

Page 5

Graduation Rates by School, 2010-11 to 2014-15 (Continued)

School	Graduation Cohort					Change from 2013-14 to 2014-15
	2010-11	2011-12	2012-13	2013-14	2014-15	
Centers						
BRIGHT HORIZONS	0.0%	*	0.0%	0.0%	*	
CROSS CREEK SCHOOL	7.1%	16.7%	26.7%	38.9%	36.4%	-2.5
CYPRESS RUN ALTERNATIVE/ESE	0.0%	0.0%	*	*	*	
DAVE THOMAS EDUCATION CENTER	6.6%	8.2%	12.3%	10.2%	17.6%	7.4
HALLANDALE ADULT/COMMUNITY CTR	4.4%	1.6%	1.7%	5.6%	7.1%	1.6
LANIER-JAMES EDUCATION CENTER	0.0%	14.3%	11.1%	0.0%	*	
OFF CAMPUS LEARNING	3.3%	1.2%	1.6%	2.3%	9.2%	6.9
PINE RIDGE ALTERNATIVE CENTER	12.9%	6.7%	8.3%	6.7%	*	
SEAGULL SCHOOL	8.8%	11.3%	13.9%	14.3%	13.0%	-1.3
SUNSET SCHOOL	21.7%	12.0%	30.8%	*		
THE QUEST CENTER	*	0.0%	*	0.0%	*	
WHIDDON RODGERS ED. CENTER	10.7%	12.7%	16.3%	15.1%	9.2%	-6.0
WHISPERING PINES SCHOOL	7.4%	4.2%	16.0%	18.4%	10.5%	-7.9
WINGATE OAKS CENTER	*	0.0%	*	*	*	
Charter Schools						
ACADEMIC SOLUTIONS HIGH SCHOOL				8.3%	6.1%	-2.3
ARC BROWARD, INC.				*	*	
BEN GAMLA CHARTER HIGH SCHOOL				87.5%	81.3%	-6.3
BROWARD CHILDREN'S CENTER NORTH	*	*	*	*	*	
CITY OF CORAL SPRINGS CHARTER	94.0%	97.5%	98.4%	98.9%	99.5%	0.6
CITY/PEMBROKE PINES CHARTER HS	96.7%	96.4%	99.3%	92.9%	99.3%	6.3
COLLEGE BOUND ACADEMY OF EXCELLENCE				*		
DOLPHIN PARK HIGH	7.7%	8.0%	9.2%	8.9%	11.4%	2.5
EAGLE ACADEMY CHARTER SCHOOL	54.0%	46.8%	*	*		
FLAGLER HIGH				6.7%	9.4%	2.8
IGENERATION EMPOWERMENT ACADEMY OF BROWARD				*	61.5%	
INTERNATIONAL SCHOOL OF BROWARD	73.3%	45.9%	62.5%	93.9%	63.0%	-31.0
LAUDERHILL HIGH	7.6%	11.3%	11.2%	4.3%	15.0%	10.7
MAVERICKS HIGH OF CENTRAL BROWARD COUNTY	12.3%	11.3%	6.7%	9.2%	16.0%	6.8
MAVERICKS HIGH OF NORTH BROWARD COUNTY		9.2%	11.3%	5.2%	4.9%	-0.3
MELROSE HIGH				4.3%	9.7%	5.4

* too few students in cohort to report a graduation rate

table continues

HIGH SCHOOL GRADUATION RATES, 2014-15

January 5, 2016

Page 6

Graduation Rates by School, 2010-11 to 2014-15 (Continued)

School	Graduation Cohort					Change from 2013-14 to 2014-15
	2010-11	2011-12	2012-13	2013-14	2014-15	
NEW GENERATION PREPARATORY HIGH SCHOOL					*	
NORTH UNIVERSITY HIGH	18.9%	20.3%	8.9%	6.6%	8.5%	1.9
PARKWAY ACADEMY	75.0%	67.9%		0.0%		0.0
PIVOT CHARTER SCHOOL				42.4%	41.7%	-0.8
SMART SCHOOL INSTITUTE/TECH AND COMMERCE	*					0.0
SOMERSET ACADEMY CHARTER HIGH	93.1%	94.5%	96.4%	95.0%	98.7%	3.7
SOMERSET ACADEMY CHARTER HIGH SCHOOL MIRAMAR		92.3%	76.2%	79.2%	85.1%	5.9
SOMERSET ARTS CONSERVATORY	100.0%	100.0%	100.0%	100.0%	100.0%	0.0
SOMERSET PREP ACADEMY HIGH AT N LAUDERDALE			*	75.5%	78.0%	2.5
SUCCESS LEADERSHIP ACADEMY	4.9%	7.7%	1.6%	0.0%		0.0
SUNED HIGH SCHOOL			0.6%	7.9%	5.9%	-2.0
SUNED HIGH SCHOOL OF NORTH BROWARD					7.2%	7.2

* too few students in cohort to report a graduation rate

Sch #	School	2010-11	2011-12	2012-13	2013-14	2014-15
Traditional High Schools						
2221	ATLANTIC TECHNICAL COLLEGE	95.8%	96.8%	98.4%	99.2%	100.0%
0361	BLANCHE ELY HIGH SCHOOL	81.1%	87.3%	84.4%	90.3%	90.9%
1741	BOYD H. ANDERSON HIGH SCHOOL	68.1%	78.3%	84.3%	79.5%	91.3%
7004	BROWARD VIRTUAL FRANCHISE	72.4%	84.7%	91.5%	92.4%	95.3%
3391	CHARLES W FLANAGAN HIGH SCHOOL	85.1%	93.9%	92.3%	90.8%	93.4%
1681	COCONUT CREEK HIGH SCHOOL	70.9%	76.5%	69.4%	63.3%	82.4%
3851	COLLEGE ACADEMY AT BCC	100.0%	100.0%	100.0%	100.0%	100.0%
1931	COOPER CITY HIGH SCHOOL	89.9%	95.2%	94.7%	91.2%	93.8%
3861	CORAL GLADES HIGH SCHOOL	81.3%	83.8%	85.2%	87.1%	91.0%
1151	CORAL SPRINGS HIGH SCHOOL	83.5%	87.3%	89.5%	88.4%	89.6%
3623	CYPRESS BAY HIGH SCHOOL	97.3%	96.8%	94.7%	94.9%	97.0%
1711	DEERFIELD BEACH HIGH SCHOOL	71.8%	78.9%	85.7%	82.9%	85.1%
0371	DILLARD 6-12	81.1%	91.0%	90.6%	85.9%	93.7%
3731	EVERGLADES HIGH SCHOOL	82.1%	86.9%	88.4%	85.6%	89.9%
0951	FORT LAUDERDALE HIGH SCHOOL	76.4%	85.2%	91.6%	91.4%	93.8%
0403	HALLANDALE HIGH SCHOOL	84.2%	89.9%	89.1%	85.6%	90.7%
1661	HOLLYWOOD HILLS HIGH SCHOOL	76.2%	78.0%	76.4%	88.1%	90.4%
2751	J. P. TARAVELLA HIGH SCHOOL	88.8%	87.9%	88.3%	90.1%	89.3%
3011	MARJORY STONEMAN DOUGLAS HS	96.3%	95.3%	94.4%	94.3%	94.3%
0241	MARTHUR HIGH SCHOOL	83.9%	89.8%	89.4%	87.6%	89.9%
1751	MIRAMAR HIGH SCHOOL	86.3%	90.4%	90.1%	86.5%	91.8%
3541	MONARCH HIGH SCHOOL	89.2%	88.3%	88.1%	86.7%	91.1%
1241	NORTHEAST HIGH SCHOOL	81.0%	92.9%	92.4%	85.1%	85.1%
1281	NOVA HIGH SCHOOL	91.6%	94.9%	94.5%	94.3%	95.1%
1901	PIPER HIGH SCHOOL	76.6%	82.2%	84.9%	81.9%	84.0%
1451	PLANTATION HIGH SCHOOL	71.0%	88.9%	84.7%	88.7%	90.3%
0185	POMPANO BEACH H. S.	98.9%	99.7%	99.3%	100.0%	100.0%
0171	SOUTH BROWARD HIGH SCHOOL	75.2%	84.1%	80.8%	79.6%	86.5%
2351	SOUTH PLANTATION HIGH SCHOOL	80.4%	77.9%	86.8%	87.5%	90.3%
0211	STRANAHAN HIGH SCHOOL	75.5%	84.2%	86.6%	89.5%	85.7%
3971	WEST BROWARD HIGH SCHOOL	97.1%	96.1%	96.4%	92.4%	97.0%
2831	WESTERN HIGH SCHOOL	86.9%	89.8%	89.3%	89.7%	94.7%
1291	WILLIAM T. MCFATTER TECHNICAL COLLEGE	97.6%	97.7%	94.6%	99.3%	99.3%
Centers						
0871	BRIGHT HORIZONS	0.0%	**.*	0.0%	0.0%	**.*
3222	CROSS CREEK SCHOOL	7.1%	16.7%	26.7%	38.9%	36.4%
2123	CYPRESS RUN ALTERNATIVE/ESE	0.0%	0.0%	**.*	**.*	**.*
3651	DAVE THOMAS EDUCATION CENTER	6.6%	8.2%	12.3%	10.2%	17.6%
0592	HALLANDALE ADULT/COMMUNITY CTR	4.4%	1.6%	1.7%	5.6%	7.1%
0405	LANIER-JAMES EDUCATION CENTER	0.0%	14.3%	11.1%	0.0%	**.*
6501	OFF CAMPUS LEARNING	3.3%	1.2%	1.6%	2.3%	9.2%
0653	PINE RIDGE ALTERNATIVE CENTER	12.9%	6.7%	8.3%	6.7%	**.*
0601	SEAGULL SCHOOL	8.8%	11.3%	13.9%	14.3%	13.0%
0422	SUNSET SCHOOL	21.7%	12.0%	30.8%	**.*	
1021	THE QUEST CENTER	**.*	0.0%	**.*	0.0%	**.*
0452	WHIDDON RODGERS ED. CENTER	10.7%	12.7%	16.3%	15.1%	9.2%
1752	WHISPERING PINES SCHOOL	7.4%	4.2%	16.0%	18.4%	10.5%
0991	WINGATE OAKS CENTER	**.*	0.0%	**.*	**.*	**.*

Charter Schools

5028	ACADEMIC SOLUTIONS HIGH SCHOOL				8.3%	6.1%
5501	ARC BROWARD, INC.				**.*	**.*
5005	BEN GAMLA CHARTER HIGH SCHOOL				87.5%	81.3%
5531	BROWARD CHILDREN'S CENTER NORTH	**.*	**.*	**.*	**.*	**.*
5091	CITY OF CORAL SPRINGS CHARTER	94.0%	97.5%	98.4%	98.9%	99.5%
5121	CITY/PEMBROKE PINES CHARTER HS	96.7%	96.4%	99.3%	92.9%	99.3%
5047	COLLEGE BOUND ACADEMY OF EXCELLENCE				**.*	
5331	DOLPHIN PARK HIGH	7.7%	8.0%	9.2%	8.9%	11.4%
5231	EAGLE ACADEMY CHARTER SCHOOL	54.0%	46.8%	**.*	**.*	
5032	FLAGLER HIGH				6.7%	9.4%
5417	IGENERATION EMPOWERMENT ACADEMY OF BROWARD				**.*	61.5%
5416	INTERNATIONAL SCHOOL OF BROWARD	73.3%	45.9%	62.5%	93.9%	63.0%
5351	LAUDERHILL HIGH	7.6%	11.3%	11.2%	4.3%	15.0%
5481	MAVERICKS HIGH OF CENTRAL BROWARD COUNTY	12.3%	11.3%	6.7%	9.2%	16.0%
5009	MAVERICKS HIGH OF NORTH BROWARD COUNTY		9.2%	11.3%	5.2%	4.9%
5323	MELROSE HIGH				4.3%	9.7%
5390	NEW GENERATION PREPARATORY HIGH SCHOOL					**.*
5341	NORTH UNIVERSITY HIGH	18.9%	20.3%	8.9%	6.6%	8.5%
5181	PARKWAY ACADEMY	75.0%	67.9%		0.0%	
5322	PIVOT CHARTER SCHOOL				42.4%	41.7%
5011	SMART SCHOOL INSTITUTE/TECH AND COMMERCE	**.*				
5221	SOMERSET ACADEMY CHARTER HIGH	93.1%	94.5%	96.4%	95.0%	98.7%
	SOMERSET ACADEMY CHARTER HIGH SCHOOL					
5007	MIRAMAR		92.3%	76.2%	79.2%	85.1%
5396	SOMERSET ARTS CONSERVATORY	100.0%	100.0%	100.0%	100.0%	100.0%
	SOMERSET PREP ACADEMY HIGH AT N					
5006	LAUDERDALE			**.*	75.5%	78.0%
5365	SUCCESS LEADERSHIP ACADEMY	4.9%	7.7%	1.6%	0.0%	
5060	SUNED HIGH SCHOOL			0.6%	7.9%	5.9%
5861	SUNED HIGH SCHOOL OF NORTH BROWARD					7.2%