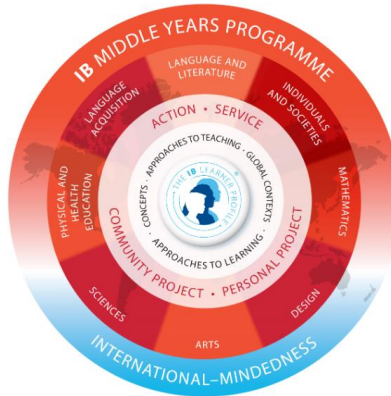


What can parents do to support our IB School?



- Reinforce Approaches to Learning (ATL) Skills: Communication, Research, Self-Management, Social, and Thinking.
- Dialogue with your learner about real-world issues and how the issue may impact them presently and in the future.
- Join and participate in the PTSA, attend SAC, SAF and other informational meetings.
- Become a school volunteer for campus activities and field trips. (browardschools.com)
- Learn more about IB MYP by visiting the IBO website (www.ibo.org)
- Join your child in community service projects on and off campus.
- Discuss the Learner Profile attributes with your child.

Caring

Open-Minded

Communicator

Knowledgeable

Principled

Inquirer

Thinker

Balanced

Risk-Taker

Reflective



Learner Profile Attributes

With which attribute do you most closely align?

<https://join.ibo.org/IBLearnerProfileQuiz>