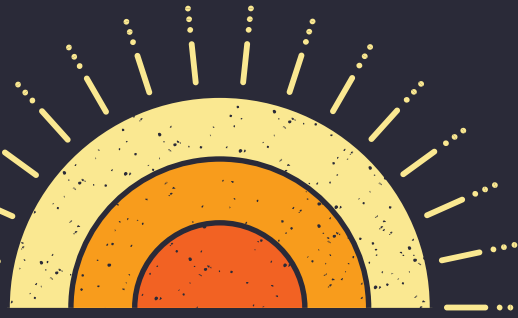




STRENGTHENING *the* PATHS *to* SUCCESS

WHAT ARE BROWARD COUNTY PUBLIC SCHOOLS TRYING TO ACCOMPLISH?

To ensure that **EVERY** student receives the very best instruction in pursuit of becoming a well-rounded individual that addresses not only his or her academic success but also social-emotional needs that serves as a catalyst to student achievement beyond expectations.

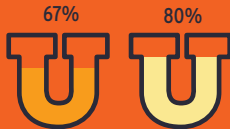


WE HAVE THREE PRIMARY GOALS:

1. HIGH-QUALITY INSTRUCTION

Measure and increase High-Quality Instruction (Core goal; best results will be achieved here when goals #2 and #3 are implemented)

Current: 2011-2012 Goal: 2014-2015



COLLEGE & CAREER READINESS: Increase graduates who meet college/career readiness to 80% by 2015.



GRADUATION SUCCESS: Increase four-year graduation rate to 90% by 2015.



HIGH SCHOOL READINESS: Increase grade 8 combined proficiency (Level 3+ in reading, math, and science) to 57% by 2015.



MIDDLE SCHOOL READINESS: Increase grade 5 combined proficiency (Level 3+ in reading, math, and science) to 69% by 2015.



EARLY CHILDHOOD (GRADE 3): Increase grade 3 combined proficiency* (Level 3+ in reading and math) to 84% by 2015.

Overall, we are working to reduce and eliminate achievement gaps.

*English language learners will be examined separately for this goal due only to the young age of the students.

2. CONTINUOUS IMPROVEMENT

Engage in continuous improvement. Processes will shift to efficient from inefficient services.

Sample performance measures:

Current Other Districts



TECHNOLOGY: Ratio of students to computers is 2.5. Average all-other districts 2.1.



FOOD SERVICE: Elementary lunch participation rate is 62%. Average all other Districts 78%.



TRANSPORTATION: Cost per total mile operated is ~\$5. Average major districts in Florida ~\$3 (Note: We want to be better than average and in the top 25%.)

We will actively monitor student success measures such as absenteeism and behavior, that impact student achievement.



3. EFFECTIVE COMMUNICATION

Communicate more effectively and with transparency



PROMOTE our accomplishments through TV, radio, print advertising and social media



TELL powerful success stories in our school community



CREATE surveys to get customer feedback



INCREASE the utility of data with powerful analytics

VISION: Educating today's students to succeed in tomorrow's world.

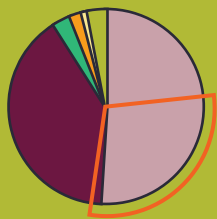
MISSION: Broward County Public Schools (BCPS) is committed to educating all students to reach their highest potential.

WHO ATTENDS BROWARD COUNTY SCHOOLS TODAY?

260,796 STUDENTS; 6TH LARGEST school district in the United States; **\$2.9 BILLION DOLLAR BUDGET;** With Total **315 SCHOOLS** (Includes elementary, middle and high schools.)

BCPS serves a diverse, **MULTICULTURAL** student population. Students are from **171 DIFFERENT COUNTRIES** and speak **53 DIFFERENT LANGUAGES.**

RACIAL DISTRIBUTION



- White 51%
- Black 39.8%
- Asian 3.6%
- Native American/Alaskan 1.9%
- Native Hawaiian/Pacific Islander .1%
- Multi-racial 3.5%

ETHNIC DISTRIBUTION

- Hispanic 28.6%

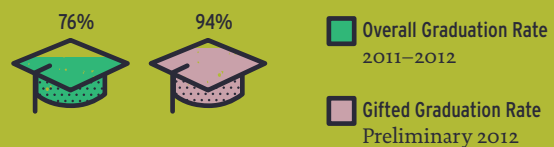
SPECIAL POPULATIONS



WHY AREN'T ALL STUDENTS COLLEGE AND CAREER READY?

Socioeconomic factors such as poverty and/or language barriers can create student achievement gaps. We have programs in place to address these factors as well as special programs developed for gifted students and for early childhood education.

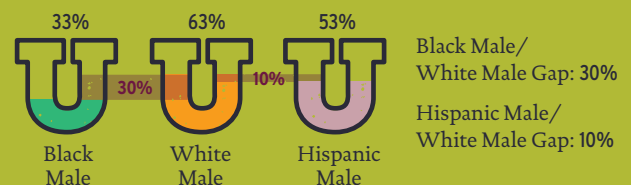
GRADUATION RATE



Early Childhood Education Department provides leadership to support internal and external partners in providing a coherent and quality education program for students from birth to third grade.

Gifted and Talented Student Initiative: The District is continually recognized for being the first in the state to initiate a universal screening process that successfully closes the gap of underrepresentation in demographic subgroups of identified gifted students.

THE MOST SIGNIFICANT ACHIEVEMENT GAP IS BETWEEN BLACK MALES AND WHITE MALES.



Black Male Task Force: To reach the ambitious educational goals that we have set for all of our students in Broward County Public Schools, the District has formed the Black Male Task Force. The work of the task force will focus on the development of plans and processes for addressing Black Male Success (BMS) in Broward County.

English for Speakers of Other Languages Department (ESOL): Through its Parent Outreach Office, the District will expand outreach through the addition of Bilingual Community Liaisons to assist parents in becoming partners in their children's education and prepare them for the college or career paths of their choice.

Exceptional Student Education Department (ESE) will provide support and leadership to families of gifted students and students with disabilities by assisting our students in achieving their potential.

Please visit
www.browardschools.com/strategicplan
for more information about the **BCPS Strategic Plan.**



The School Board of Broward County, Florida

Laurie Rich Levinson, Chair
Patricia Good, Vice Chair

Robin Bartleman
Abby M. Freedman
Donna P. Korn
Katherine M. Leach
Ann Murray
Dr. Rosalind Osgood
Nora Rupert

Robert W. Runcie
Superintendent of Schools

The School Board of Broward County, Florida, prohibits any policy or procedure which results in discrimination on the basis of age, color, disability, gender identity, gender expression, national origin, marital status, race, religion, sex or sexual orientation. Individuals who wish to file a discrimination and/or harassment complaint may call the Executive Director, Benefits & EEO Compliance at 754-321-2150 or Teletype Machine (TTY) 754-321-2158. Individuals with disabilities requesting accommodations under the Americans with Disabilities Act Amendments Act of 2008, (ADAAA) may call Equal Educational Opportunities (EEO) at 754-321-2150 or Teletype Machine (TTY) 754-321-2158.

Broward County Public Schools / 600 SE 3rd Ave / Fort Lauderdale, FL 33301 / 754.321.0000 / www.browardschools.com