



Established 1915

BROWARD

County Public Schools

Redefining Our Schools

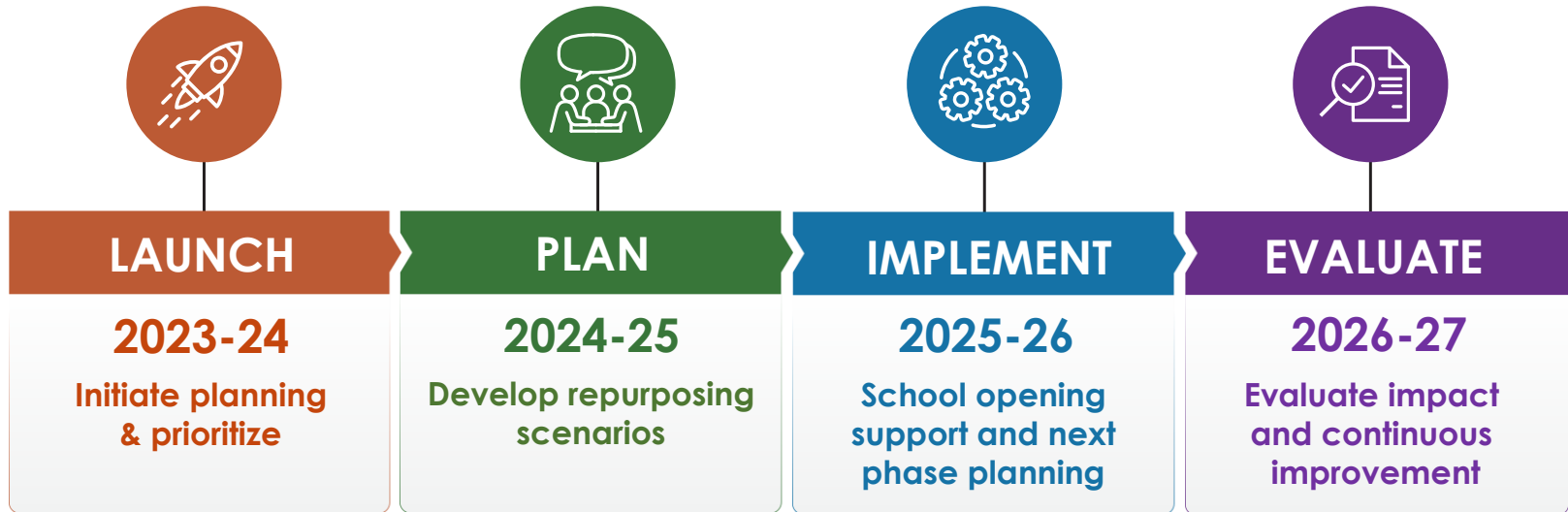
School Board Update

April 16, 2024



› ● Every **1** Counts! ● ‹

Multi-Year Timeline



Original slide from March 20th Board Workshop



LAUNCH



FEBRUARY

START

Community
Conversation
(districtwide)



MARCH - MAY

BOARD WORKSHOP

Selection
Process &
Criteria

INITIAL EXPLORATION

Initial school
selection memo
Community
Conversations
Further Analysis

We are here

BOARD WORKSHOP

Review School
Profiles & Menu
of Options



JUNE

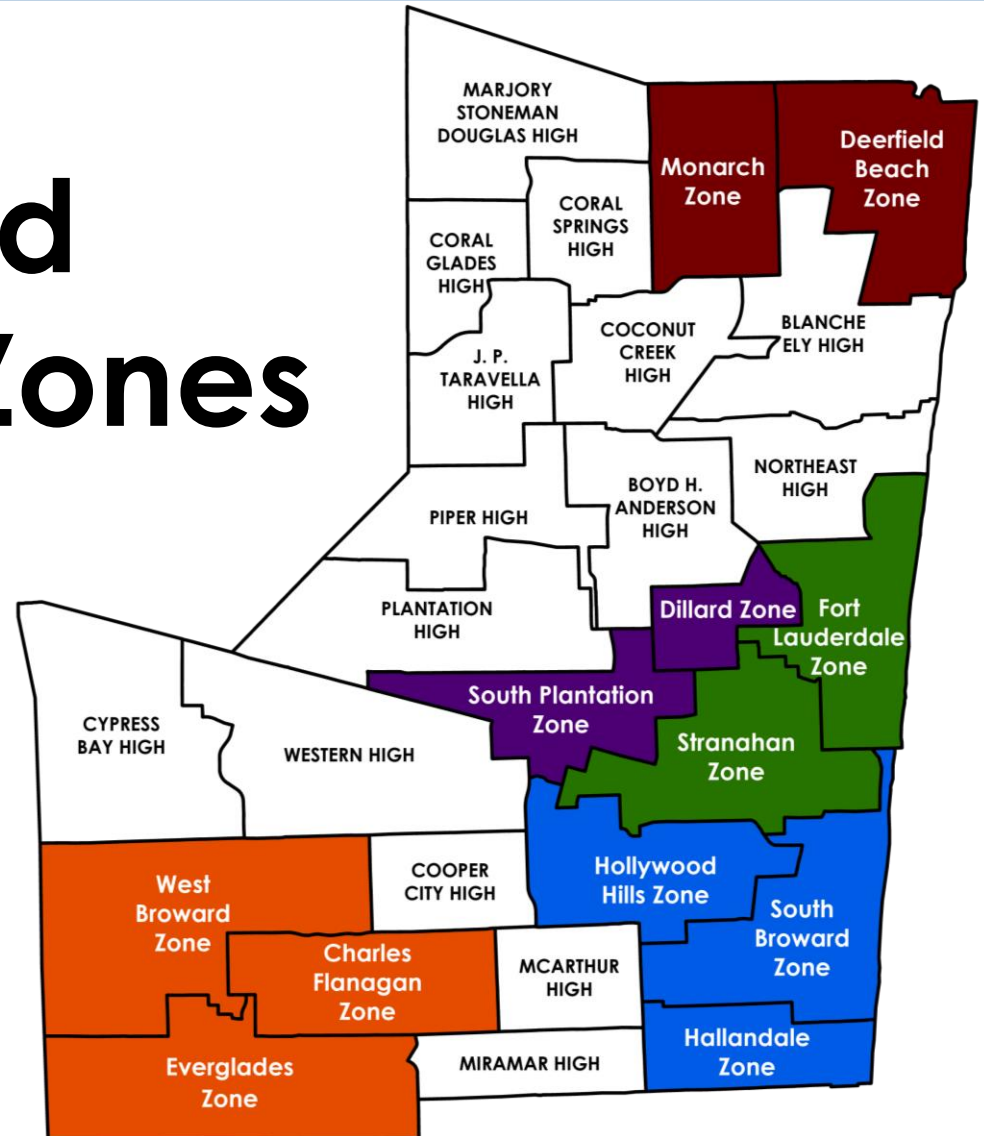
**EXPECTED BOARD
VOTE**

Start planning
with community
for 2025/26
implementation

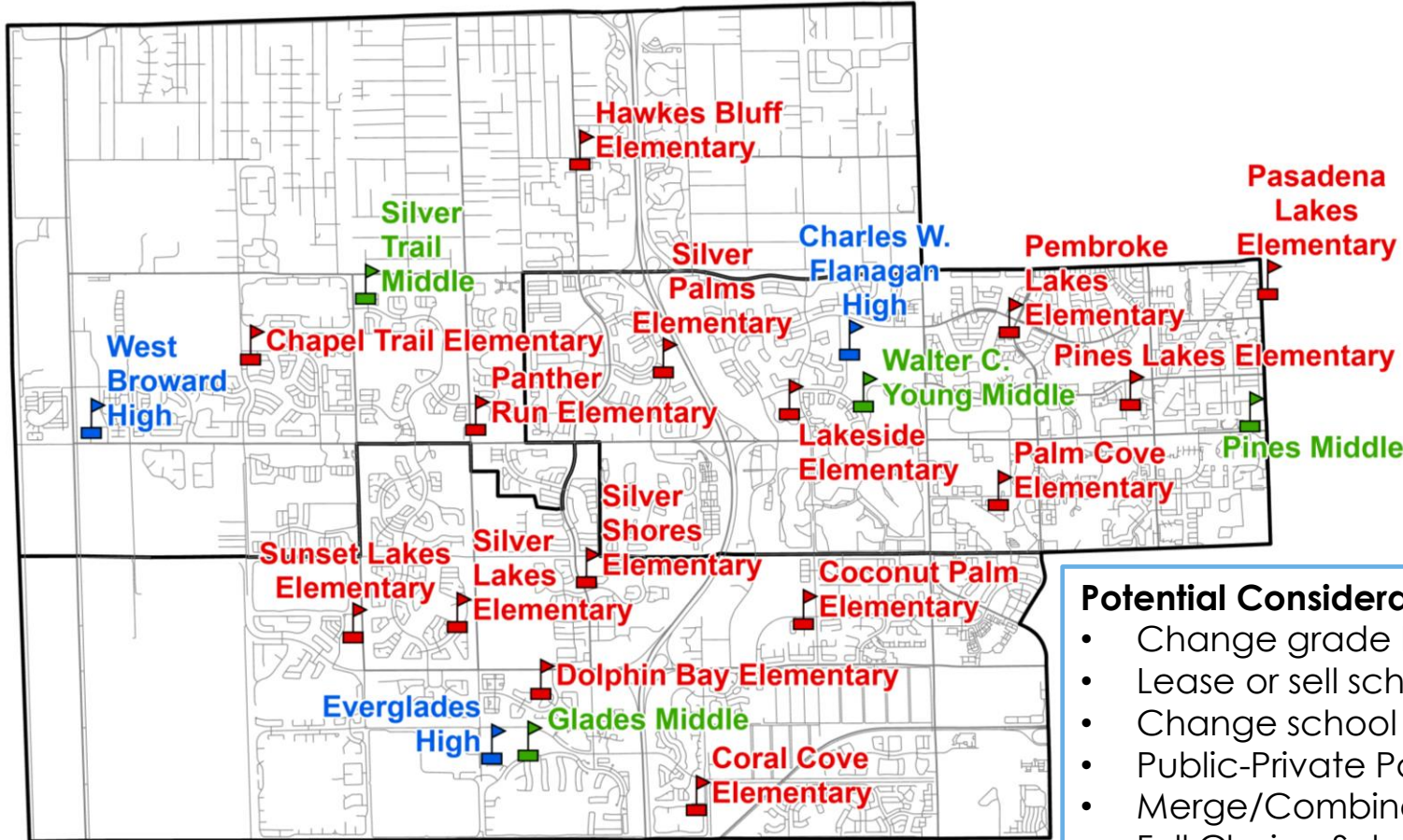
Original slide from March 20th Board Workshop

Identified Innovation Zones

Innovation Zones are organized for school communities to collaborate in groups of elementary, middle and high schools that students articulate to and from. The high school is the name of each innovation zone.



Everglades, Flanagan, & West Broward Zones

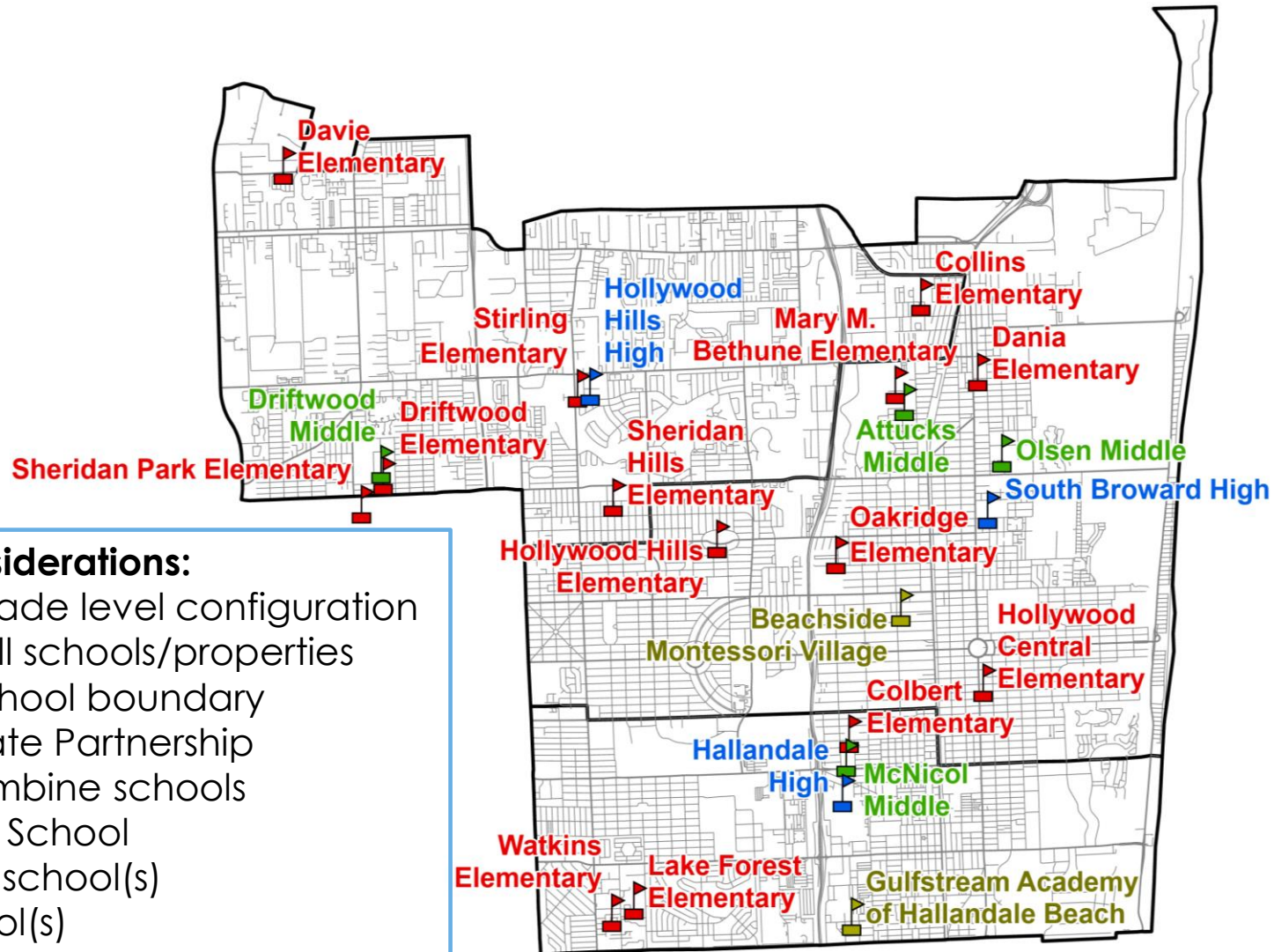


Potential Considerations:

- Change grade level configuration
- Lease or sell schools/properties
- Change school boundary
- Public-Private Partnership
- Merge/Combine schools
- Full Choice School
- Repurpose school(s)
- Close school(s)



Hallandale, Hollywood Hills & South Broward Zones



Potential Considerations:

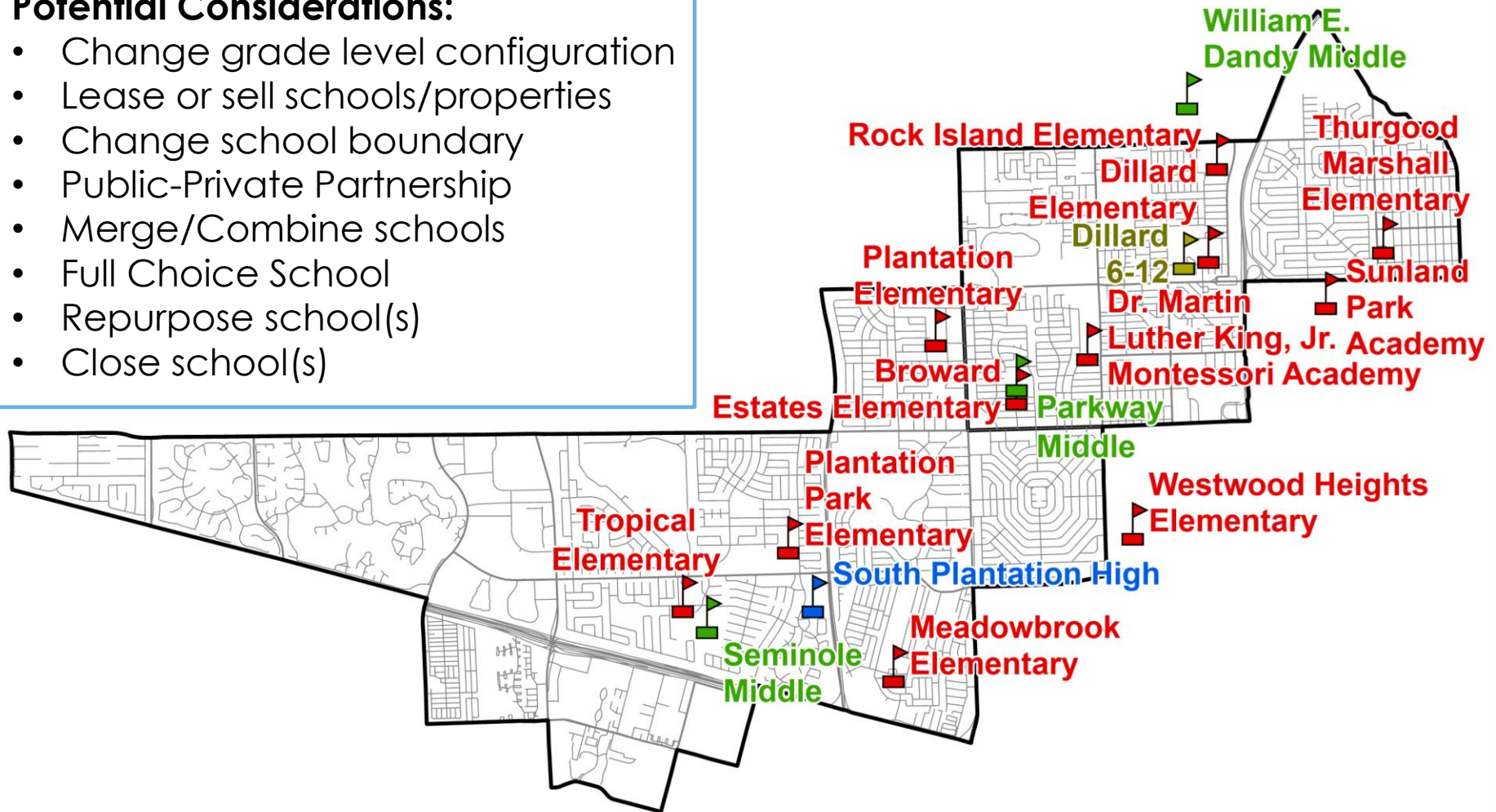
- Change grade level configuration
- Lease or sell schools/properties
- Change school boundary
- Public-Private Partnership
- Merge/Combine schools
- Full Choice School
- Repurpose school(s)
- Close school(s)



Dillard & South Plantation Zones

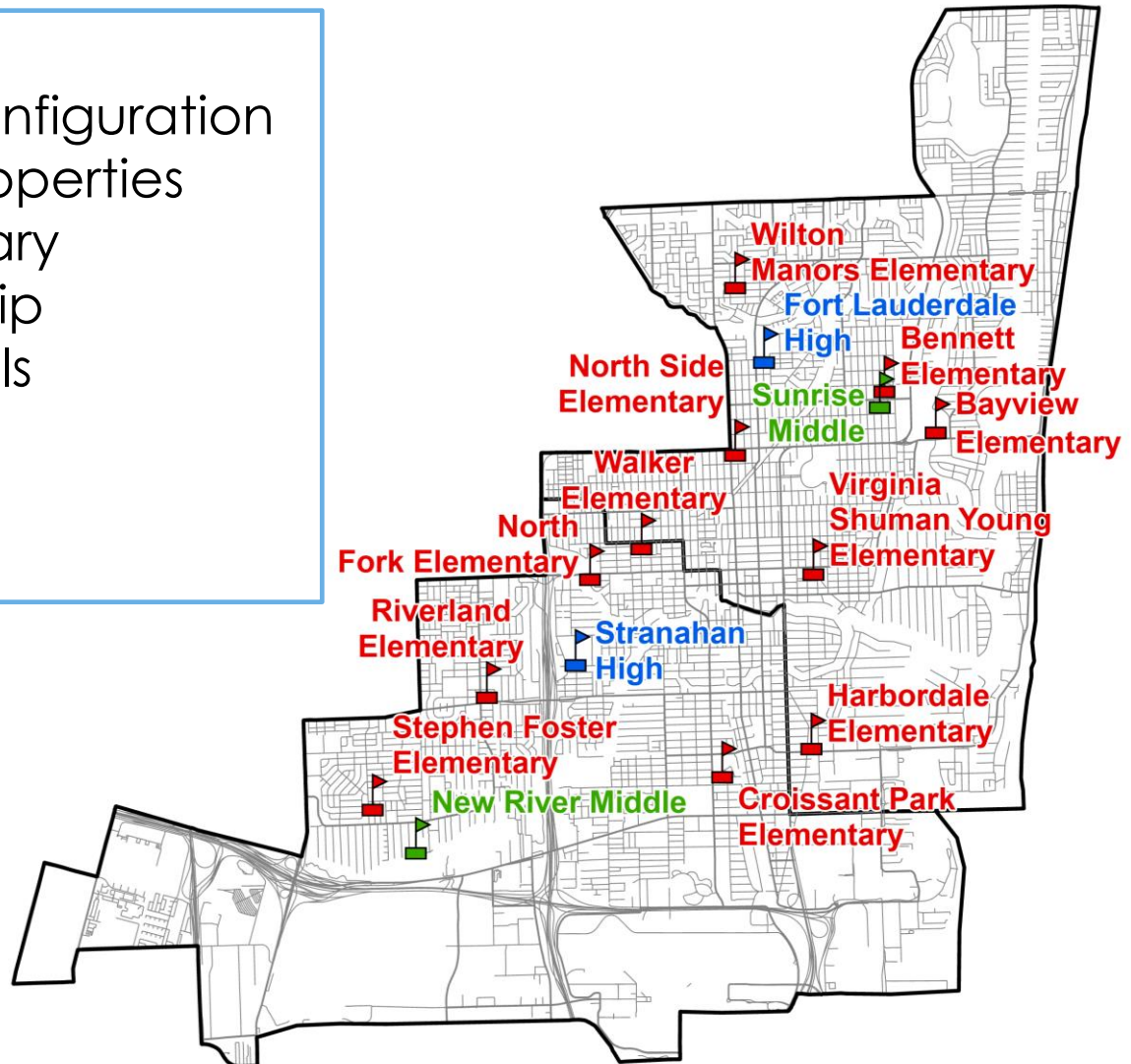
Potential Considerations:

- Change grade level configuration
- Lease or sell schools/properties
- Change school boundary
- Public-Private Partnership
- Merge/Combine schools
- Full Choice School
- Repurpose school(s)
- Close school(s)

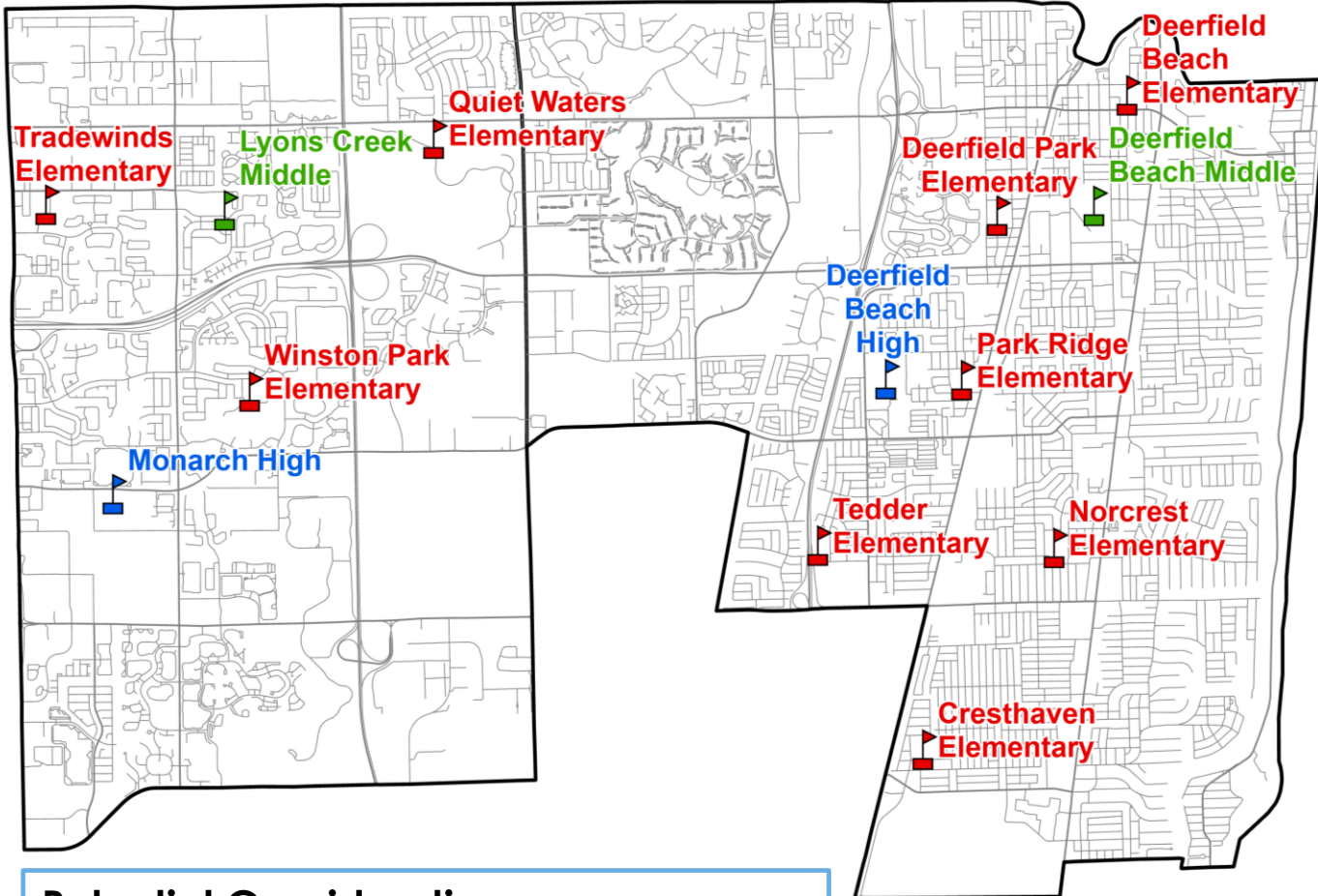


Potential Considerations:

- Change grade level configuration
- Lease or sell schools/properties
- Change school boundary
- Public-Private Partnership
- Merge/Combine schools
- Full Choice School
- Repurpose school(s)
- Close school(s)



Deerfield Beach & Monarch Zones



Potential Considerations:

- Public-Private Partnership
 - Lease or sell properties



Potential Opportunities* include, but are not limited to:

- Implement/replicate high-demand programs
- Increase instructional support for students
- Improve facilities/learning environments
- Develop new, innovative school models (i.e., school within a school, District-managed charter, etc.)
- Leverage partnerships to generate revenue and expand services
- Optimize administrative space

**Consistent with language from March 20th Board Workshop*



Beyond the Zone-Specific Considerations

Several District sites are under consideration for repurposing, including but not limited to:

Name	Location	Size in Acres	Municipality	Status
School Board Headquarters	SE 6th St and SE 3rd Ave	14-Floor Bldg., 306,289 Sq. Ft.	Fort Lauderdale	Under consideration for repurposing/sale/lease.
Technology & Support Services Center Annex	W Oakland Park Blvd and W Atrium	3-Floor Bldg., 49,103 Sq. Ft.	Sunrise	Under consideration for repurposing/sale/lease.
Coral Springs High Acreage Site	N Rock Island Rd and W Sample Rd	2.86	Coral Springs	Under contract to Predesco Property Investments, LLC. Closing date of 07/09/2024.
Elementary D-1 School Site	S Hiatus Rd and W Broward Blvd	11.84	Plantation	BCPS is currently addressing environmental issues at the site.
Elementary School Site P (Triple H Parkland The Wedge)	Hillsboro Blvd and Lago Way	8.67	Parkland	Vacant site not surplusd for sale. Deed restricted for educational facilities use.
Middle School Site PP (Triple H Parkland The Wedge)	Hillsboro Blvd and Nob Hill Rd	16.99	Parkland	Vacant site not surplusd for sale. Deed restricted for educational facilities use.
Elementary A-1 Site (Trails End)	University Drive and Trails End	10.14	Parkland	Vacant site not surplusd for sale. Encumbered by Certificate of Participation (COPs).
Southwest Ranches Site	Sheridan St and NW 190th Ave	30 (25*)	Southwest Ranches	Vacant site not surplusd for sale. Deed restricted for educational facilities use. Encumbered by 2006 COPs.

**Accounts for 5 acres subject to real estate-related School Board action*





LAUNCH

COMMUNITY ENGAGEMENT

ZONES:

Everglades
Flanagan
West Broward

ZONES:

Hallandale
Hollywood Hills
South Broward

ZONES:

Fort Lauderdale
Stranahan

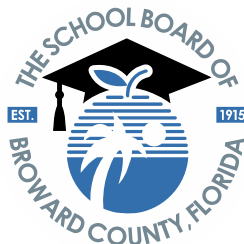
ZONES:

Dillard
South Plantation

ZONES:

Deerfield Beach
Monarch

- We will host meetings with these identified clusters of zones for further collaboration and dialogue
 - Dates, times, and locations will be announced soon



Lori Alhadeff, Chair
Debra Hixon, Vice Chair

Torey Alston
Brenda Fam, Esq.
Daniel P. Foganholi
Dr. Jeff Holness
Sarah Leonardi
Nora Rupert
Dr. Allen Zeman

Dr. Peter B. Licata
Superintendent of Schools

The School Board of Broward County, Florida, prohibits any policy or procedure which results in discrimination on the basis of age, color, disability, gender identity, gender expression, genetic information, marital status, national origin, race, religion, sex or sexual orientation. The School Board also provides equal access to the Boy Scouts and other designated youth groups. Individuals who wish to file a discrimination and/or harassment complaint may call the Director, Equal Educational Opportunities/ADA Compliance Department & District's Equity Coordinator/Title IX Coordinator at 754-321-2150 or email eeo@browardschools.com.

Individuals with disabilities requesting accommodations under the Americans with Disabilities Act Amendments Act of 2008, (ADAAA) may call Equal Educational Opportunities/ADA Compliance Department at 754-321-2150 or email eeo@browardschools.com.

browardschools.com

