

M	T	W	TH	F	S	SU
26	27	28	29	30	31	1
2	3	4	5	6	7	8
9	10	11	12	13	14	15
16	17	18	19	20	21	22
23	24	25	26	27	28	29
30	31	1	2	3	4	5

9 MONDAY SUBJECT ASSIGNMENT & DUE DATE HALL PASS

Muharram begins at sundown

TO INIT. TO INIT. TO INIT. TO INIT. TO INIT.

VOCABULARY **cauterize v.** – to burn or sear a wound. The doctors chose to cauterize the vessels in order to stop the bleeding.

10 TUESDAY SUBJECT ASSIGNMENT & DUE DATE HALL PASS

TO INIT. TO INIT. TO INIT. TO INIT. TO INIT.

11 WEDNESDAY SUBJECT ASSIGNMENT & DUE DATE HALL PASS

TO INIT. TO INIT. TO INIT. TO INIT. TO INIT.

STUDY TIP Test yourself. Make up questions about key sections in notes or reading.

HOME ↔ SCHOOL COMMUNICATION

INITIAL



Jasper National Park, Alberta, Canada

HALL PASS SUBJECT ASSIGNMENT & DUE DATE **12 THURSDAY**

TO INIT. TO INIT. TO INIT. TO INIT. TO INIT.

Scientists estimate that 6% to 12% of all human beings ever born are alive at this very moment. **SCIENCE**

HALL PASS SUBJECT ASSIGNMENT & DUE DATE **13 FRIDAY**

TO INIT. TO INIT. TO INIT. TO INIT. TO INIT.

THIS WEEK IN HISTORY

August 9, 1974
Because of the Watergate scandal and the threat of impeachment, President Richard M. Nixon resigns.

14 SATURDAY

CHARACTER CORNER

Education
EDUCATION is gaining knowledge and skills.
"What sculpture is to a block of marble, education is to a human soul."
– Joseph Addison

15 SUNDAY

M	T	W	TH	F	S	SU
26	27	28	29	30	31	1
2	3	4	5	6	7	8
9	10	11	12	13	14	15
16	17	18	19	20	21	22
23	24	25	26	27	28	29
30	31	1	2	3	4	5

16 MONDAY	SUBJECT ASSIGNMENT & DUE DATE	HALL PASS
		TO
		INIT.
		TO
		INIT.
		TO
		INIT.
		TO
		INIT.

VOCABULARY gratis adv., adj. – free. The company gave one trip gratis to every member of the sales staff.

17 TUESDAY	SUBJECT ASSIGNMENT & DUE DATE	HALL PASS
		TO
		INIT.
		TO
		INIT.
		TO
		INIT.
		TO
		INIT.

18 WEDNESDAY	SUBJECT ASSIGNMENT & DUE DATE	HALL PASS
		TO
		INIT.
		TO
		INIT.
		TO
		INIT.
		TO
		INIT.

STUDY TIP Try "chunking" information. For example, if you want to remember the colors in the visible spectrum (red, orange, yellow, green, blue, indigo, violet), put them all in one "chunk" with the acronym ROY G. BIV.

HOME ↔ SCHOOL COMMUNICATION

INITIAL



Saguaro National Park, Arizona, USA

HALL PASS	SUBJECT ASSIGNMENT & DUE DATE	19 THURSDAY
TO		
INIT.		
TO		
INIT.		
TO		
INIT.		
TO		
INIT.		

Approximately 4 billion tons of carbon accumulate in the air each year. About 30% comes from continued burning of the rainforests. **GO GREEN**

HALL PASS	SUBJECT ASSIGNMENT & DUE DATE	20 FRIDAY
TO		
INIT.		
TO		
INIT.		
TO		
INIT.		
TO		
INIT.		

THIS WEEK IN HISTORY	21 SATURDAY
<p>August 21, 1911 After spending the night hiding in a closet, three men walk out of the Louvre in Paris with the <i>Mona Lisa</i>. It's recovered two years later.</p>	

CHARACTER CORNER	22 SUNDAY
<p>Moral A MORAL person is honest and good. "Two things fill the mind with ever new and increasing wonder and awe: the starry heavens above me and the moral law within me." – Immanuel Kant</p>	

M	T	W	TH	F	S	SU
26	27	28	29	30	31	1
2	3	4	5	6	7	8
9	10	11	12	13	14	15
16	17	18	19	20	21	22
23	24	25	26	27	28	29
30	31	1	2	3	4	5

23	MONDAY	SUBJECT ASSIGNMENT & DUE DATE		HALL PASS
				TO
				INIT.
				TO
				INIT.
				TO

VOCABULARY **tawdry adj.** – cheap and gaudy. He won a few tawdry charms at the carnival.

24	TUESDAY	SUBJECT ASSIGNMENT & DUE DATE		HALL PASS
				TO
				INIT.
				TO
				INIT.
				TO

25	WEDNESDAY	SUBJECT ASSIGNMENT & DUE DATE		HALL PASS
				TO
				INIT.
				TO
				INIT.
				TO

STUDY TIP For easier recall, link new material to something that's meaningful to you.

HOME ↔ SCHOOL COMMUNICATION	INITIAL



Volcanic explosion, Karangetang, Indonesia

26	THURSDAY	SUBJECT ASSIGNMENT & DUE DATE		HALL PASS
				TO
				INIT.
				TO
				INIT.
				TO

Rank your classes in order of difficulty; spend time on your most challenging class early every day. **ACHIEVE**

27	FRIDAY	SUBJECT ASSIGNMENT & DUE DATE		HALL PASS
				TO
				INIT.
				TO
				INIT.
				TO

THIS WEEK IN HISTORY	<p>28 SATURDAY</p> <hr/> <hr/> <hr/> <hr/> <hr/> <hr/>
<p>August 28, 1922 Americans hear the first radio commercial – establishing radio as a powerful medium for conveying information from news and weather to advertising.</p>	

CHARACTER CORNER	<p>29 SUNDAY</p> <hr/> <hr/> <hr/> <hr/> <hr/> <hr/>
<p>Motivated A MOTIVATED person works toward a goal with diligence and energy. <i>“A creative man is motivated by the desire to achieve, not by the desire to beat others.”</i> – Ayn Rand</p>	

M	T	W	TH	F	S	SU
30	31	1	2	3	4	5
6	7	8	9	10	11	12
13	14	15	16	17	18	19
20	21	22	23	24	25	26
27	28	29	30	1	2	3
4	5	6	7	8	9	10

30 MONDAY SUBJECT ASSIGNMENT & DUE DATE HALL PASS

	TO	INIT.
	TO	INIT.
	TO	INIT.
	TO	INIT.
	TO	INIT.
	TO	INIT.

VOCABULARY **adamant adj.** – unyielding; firm in opinion. The debate coach was adamant that team members remove vocalized pauses such as “um” from their speech.

31 TUESDAY SUBJECT ASSIGNMENT & DUE DATE HALL PASS

	TO	INIT.
	TO	INIT.
	TO	INIT.
	TO	INIT.
	TO	INIT.
	TO	INIT.

1 WEDNESDAY SUBJECT ASSIGNMENT & DUE DATE HALL PASS

	TO	INIT.
	TO	INIT.
	TO	INIT.
	TO	INIT.
	TO	INIT.
	TO	INIT.

STUDY TIP When studying, try to imagine the perspective of your teachers. Why do they want you to learn this, and what are the most important points?

HOME ↔ SCHOOL COMMUNICATION INITIAL



Oxtongue Lake, Dwight, Ontario, Canada

HALL PASS SUBJECT ASSIGNMENT & DUE DATE **2 THURSDAY**

	TO	INIT.
	TO	INIT.
	TO	INIT.
	TO	INIT.
	TO	INIT.
	TO	INIT.

Physical activity helps you stay healthy. Try hiking, skateboarding, bicycling, jumping rope, gymnastics, hopscotch, or playing sports. **HEALTH**

HALL PASS SUBJECT ASSIGNMENT & DUE DATE **3 FRIDAY**

	TO	INIT.
	TO	INIT.
	TO	INIT.
	TO	INIT.
	TO	INIT.
	TO	INIT.

THIS WEEK IN HISTORY

August 31, 1955
At the General Motors Powerama in Chicago, William G. Cobb of General Motors demonstrates the world's first solar-powered car.

4 SATURDAY

CHARACTER CORNER

Patriotism
People can demonstrate **PATRIOTISM** by showing love and respect for their country.

“A man’s country is not a certain area of land, of mountains, rivers, and woods, but it is a principle, and patriotism is loyalty to that principle.”
– George William Curtis

5 SUNDAY

M	T	W	TH	F	S	SU
30	31	1	2	3	4	5
6	7	8	9	10	11	12
13	14	15	16	17	18	19
20	21	22	23	24	25	26
27	28	29	30	1	2	3
4	5	6	7	8	9	10

6 MONDAY SUBJECT ASSIGNMENT & DUE DATE HALL PASS

Labor Day
Rosh Hashanah begins at sundown

TO INIT. TO INIT. TO INIT. TO INIT. TO INIT.

VOCABULARY **effulgent adj.** – radiant. The windows of the skyscraper reflected the effulgent rays of the setting sun.

7 TUESDAY SUBJECT ASSIGNMENT & DUE DATE HALL PASS

TO INIT. TO INIT. TO INIT. TO INIT. TO INIT.

8 WEDNESDAY SUBJECT ASSIGNMENT & DUE DATE HALL PASS

TO INIT. TO INIT. TO INIT. TO INIT. TO INIT.

STUDY TIP As you read, try to elaborate upon new information with your own examples. We remember best those things most meaningful to us.

HOME ↔ SCHOOL COMMUNICATION

INITIAL



Grand Canyon National Park, Arizona, USA

HALL PASS SUBJECT ASSIGNMENT & DUE DATE **9 THURSDAY**

TO INIT. TO INIT. TO INIT. TO INIT. TO INIT.

Earth and the moon are about 4.5 billion years old; the sun is about 4.6 billion years old. **SCIENCE**

HALL PASS SUBJECT ASSIGNMENT & DUE DATE **10 FRIDAY**

TO INIT. TO INIT. TO INIT. TO INIT. TO INIT.

THIS WEEK IN HISTORY

September 11, 2001
Terrorist attacks destroy the 110-story twin towers of the World Trade Center in New York City and severely damage a wing of the Pentagon in Arlington, Virginia.

11 SATURDAY
Patriot Day

CHARACTER CORNER

Trust
If you **TRUST** someone, you believe that person is honest and reliable.
"Trust that little voice in your head that says, 'Wouldn't it be interesting if ...,' and then do it."
– Duane Michals

12 SUNDAY

M	T	W	TH	F	S	SU
30	31	1	2	3	4	5
6	7	8	9	10	11	12
13	14	15	16	17	18	19
20	21	22	23	24	25	26
27	28	29	30	1	2	3
4	5	6	7	8	9	10

13 MONDAY SUBJECT ASSIGNMENT & DUE DATE HALL PASS

	TO	INIT.
	TO	INIT.
	TO	INIT.
	TO	INIT.
	TO	INIT.
	TO	INIT.

VOCABULARY **invalidate v.** – weaken; destroy. She wanted to invalidate his argument with facts contradicting what he'd said.

14 TUESDAY SUBJECT ASSIGNMENT & DUE DATE HALL PASS

	TO	INIT.
	TO	INIT.
	TO	INIT.
	TO	INIT.
	TO	INIT.
	TO	INIT.

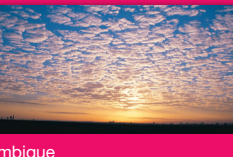
15 WEDNESDAY SUBJECT ASSIGNMENT & DUE DATE HALL PASS

Yom Kippur begins at sundown

	TO	INIT.
	TO	INIT.
	TO	INIT.
	TO	INIT.
	TO	INIT.
	TO	INIT.

STUDY TIP Stay on the offensive. If you read passively, you might miss important points.

HOME ↔ SCHOOL COMMUNICATION INITIAL



Sunset, Mozambique

HALL PASS SUBJECT ASSIGNMENT & DUE DATE **16 THURSDAY**

	TO	INIT.
	TO	INIT.
	TO	INIT.
	TO	INIT.
	TO	INIT.
	TO	INIT.

A single tree produces approximately 260 pounds of oxygen per year. That means two mature trees can supply enough oxygen annually to support a family of four. **GO GREEN**

HALL PASS SUBJECT ASSIGNMENT & DUE DATE **17 FRIDAY**

	TO	INIT.
	TO	INIT.
	TO	INIT.
	TO	INIT.
	TO	INIT.
	TO	INIT.

THIS WEEK IN HISTORY

September 16, 1620
The *Mayflower* sails from Plymouth, England, bound for the New World with 102 passengers on board.

18 SATURDAY

CHARACTER CORNER

Determination
DETERMINATION means working toward a goal.
"Determination gives you the resolve to keep going in spite of the roadblocks that lay before you."
– Denis Waitley

19 SUNDAY

M	T	W	TH	F	S	SU
30	31	1	2	3	4	5
6	7	8	9	10	11	12
13	14	15	16	17	18	19
20	21	22	23	24	25	26
27	28	29	30	1	2	3
4	5	6	7	8	9	10

20	MONDAY	SUBJECT ASSIGNMENT & DUE DATE	HALL PASS
			TO
			INIT.
			TO
			INIT.
			TO
			INIT.
			TO
			INIT.

VOCABULARY **wary adj.** – cautious. The bicyclists were wary of loose gravel that had accumulated in the road's bike lane.

21	TUESDAY	SUBJECT ASSIGNMENT & DUE DATE	HALL PASS
			TO
			INIT.
			TO
			INIT.
			TO
			INIT.
			TO
			INIT.

22	WEDNESDAY	SUBJECT ASSIGNMENT & DUE DATE	HALL PASS
		First day of autumn	TO
			INIT.
			TO
			INIT.
			TO
			INIT.
			TO
			INIT.

STUDY TIP Take notes and underline key concepts. Discuss the material with others in your class.

HOME ↔ SCHOOL COMMUNICATION

INITIAL



Mount Rainier, Washington, USA

HALL PASS	SUBJECT ASSIGNMENT & DUE DATE	23	THURSDAY
TO			
INIT.			
TO			
INIT.			
TO			
INIT.			
TO			
INIT.			

Listen to and respect your teachers. They can help you achieve. **ACHIEVE**

HALL PASS	SUBJECT ASSIGNMENT & DUE DATE	24	FRIDAY
TO			
INIT.			
TO			
INIT.			
TO			
INIT.			
TO			
INIT.			

THIS WEEK IN HISTORY	25	SATURDAY
September 25, 1957 Nine Black students enter all-white Central High School in Little Rock, Arkansas, escorted by the U.S. Army. Three weeks earlier, Gov. Orval Faubus had employed National Guard troops to prevent federal court-ordered racial integration.		

CHARACTER CORNER	26	SUNDAY
Citizenship CITIZENSHIP encompasses the rights, privileges, and duties that come with living in a community and country. <i>"The first requisite of a good citizen in this republic of ours is that he shall be able and willing to pull his own weight."</i> – Theodore Roosevelt		

M	T	W	TH	F	S	SU
30	31	1	2	3	4	5
6	7	8	9	10	11	12
13	14	15	16	17	18	19
20	21	22	23	24	25	26
27	28	29	30	1	2	3
4	5	6	7	8	9	10

27 MONDAY SUBJECT ASSIGNMENT & DUE DATE HALL PASS

	TO	INIT.
	TO	INIT.
	TO	INIT.
	TO	INIT.
	TO	INIT.
	TO	INIT.

VOCABULARY **juxtapose v.** – place side by side. Comparison will be easier if you juxtapose the two items.

28 TUESDAY SUBJECT ASSIGNMENT & DUE DATE HALL PASS

	TO	INIT.
	TO	INIT.
	TO	INIT.
	TO	INIT.
	TO	INIT.
	TO	INIT.

29 WEDNESDAY SUBJECT ASSIGNMENT & DUE DATE HALL PASS

	TO	INIT.
	TO	INIT.
	TO	INIT.
	TO	INIT.
	TO	INIT.
	TO	INIT.

STUDY TIP Get actively involved with the text as you read. Ask yourself, "What is important to remember about this section?"

HOME ↔ SCHOOL COMMUNICATION INITIAL



Great Sand Dunes National Park, Colorado, USA

HALL PASS SUBJECT ASSIGNMENT & DUE DATE **30 THURSDAY**

	TO	INIT.
	TO	INIT.
	TO	INIT.
	TO	INIT.
	TO	INIT.
	TO	INIT.

Sugar was one of the first medicines; it also is the only taste humans are born craving. **HEALTH**

HALL PASS SUBJECT ASSIGNMENT & DUE DATE **1 FRIDAY**

	TO	INIT.
	TO	INIT.
	TO	INIT.
	TO	INIT.
	TO	INIT.
	TO	INIT.

THIS WEEK IN HISTORY

October 2, 1967
Thurgood Marshall becomes the first African American justice of the U.S. Supreme Court.

2 SATURDAY

CHARACTER CORNER

Initiative
INITIATIVE is the ability to begin a plan or task.
"Organization can never be a substitute for initiative and for judgment."
– Louis D. Brandeis

3 SUNDAY