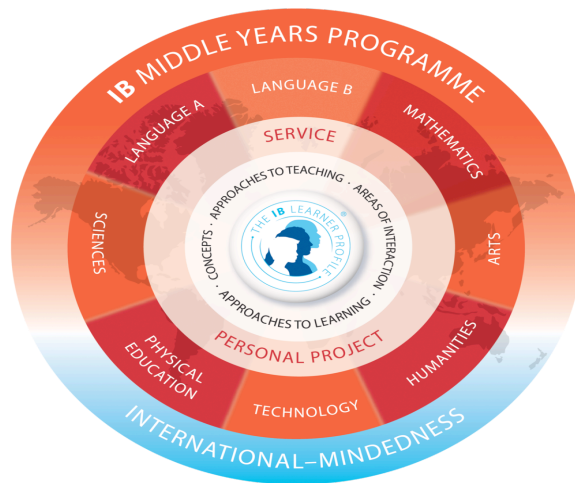


What does the MYP look like at LLMS?



Global-citizenship:

Students are involved in community and service, they have engaging classroom experiences that cause them to think about the environment, health and social issues, how human ingenuity has improved our world, and how we are interconnected.

Balanced:

Students are balanced learners, taking on eight subjects for each year of the MYP: Language A (English), mathematics, science, Language B (Spanish I, II, or III) humanities, PE, arts, and technology.

Inquiring:

Each unit of study is driven by unit question that invites students into the content and inquire about it in the context of the Area of Interaction: Environments, Health and Social Education, Human Ingenuity, or Community and Service.

Assessment:

Assessment is engaging, rigorous, constructed response, projects, performances, responses or products. All MYP assessments are graded

with MYP criteria. The criteria vary from subject to subject.

Holistic Education:

At LLMS we endeavor to support the development of the whole child: the academic as well as the social-emotional profile of each student. We have learner profile of the month assemblies, follow-up activities, as well as reinforce these traits across all of the subjects.

What are the advantages of this program?

All Advanced Courses Development of the Whole Child

High School Credits (Up to 13 can be earned)

21st Century Technology Infused State of the Art Classrooms

Exciting Field Trips as an Extension of the Curriculum

Growth of Character and Abilities

Motivated Peers

Exciting Class Projects

Students are held to International Standards

Well-rounded preparation for the High School IB Diploma

Is Transportation Provided?

Yes! Any student who lives South of Commercial Boulevard and at least two miles from Lauderdale Lakes IB World School is eligible for transportation. Depot stops, typically located at the elementary or middle school closest to your home, will be utilized for pick up and drop off of students.