

Broward County Public Schools  
Student Transportation & Fleet Services Department



**2021-2022**

**TRANSPORTATION**

**OPEN HOUSE**



Please visit/call your student's school if you have any questions about school bus transportation for 2021-2022. The Transportation Open House is for parents or guardians to visit a transportation site if they still have questions about a student's school bus transportation.

**Saturday, August 14th 10:00AM—2:00PM**

**&**

**Sunday, August 15th 1:00PM—5:00PM**

**OPEN HOUSE LOCATIONS**

**1000 Routes**

**North & North Satellite Terminal**

**North Satellite**

**1751 NW 22nd Ave**

**Pompano Beach, 33069**

**754-321-4000**

**Bloneva Fulmore, Manager**

**2000 Routes**

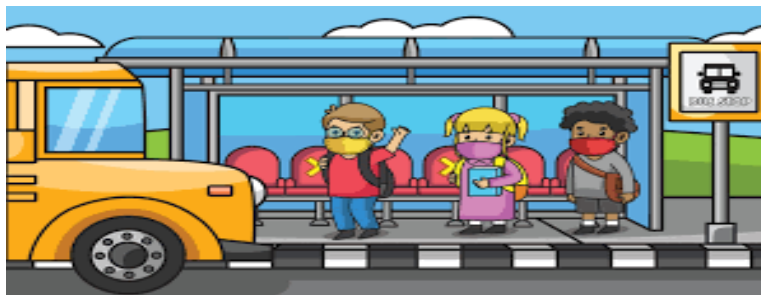
**Central Terminal**

**3831 NW 10th Avenue**

**Oakland Park, 33309**

**754-321-4480**

**Kathy Matthews, Manager (TA)**



**3000 Routes**

**South Terminal**

**900 S University Drive**

**Pembroke Pines, 33025**

**754-321-4100**

**Lisa McBride, Manager**

**4000 & 5000 Routes**

**Central West**

**South West**

**2320 College Avenue**

**Davie, 33314**

**754-321-4150**

**Jacqueline Druses, Manager (TA)**

**"WE *are* ONE *United Together!*"**