



# Broward County Public Schools (BCPS), Data Snapshot Incidents and Suspensions, 2012-13

Report from Student Assessment & Research

May, 2014

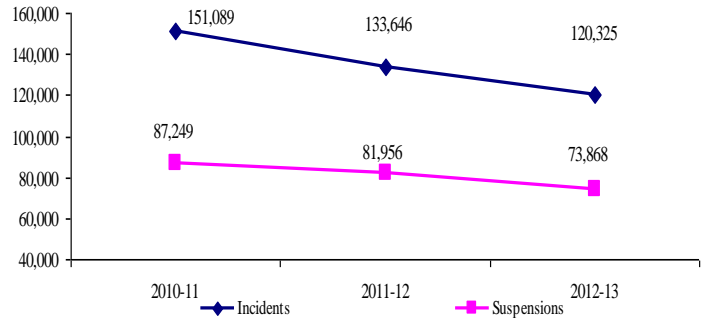
From 2010-11 to 2012-13,  
the total number of **Incidents** decreased by

# 20%

and the total number of **Suspensions** decreased by

# 15%

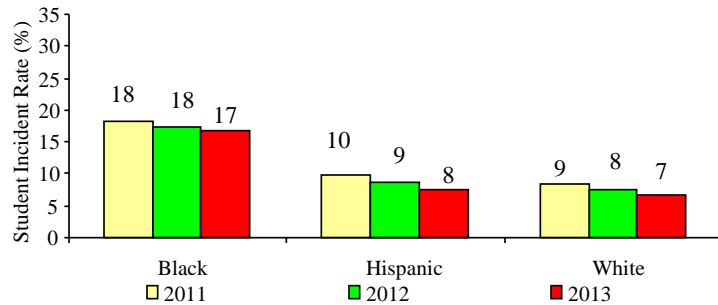
**Total number of Incidents and Suspensions**



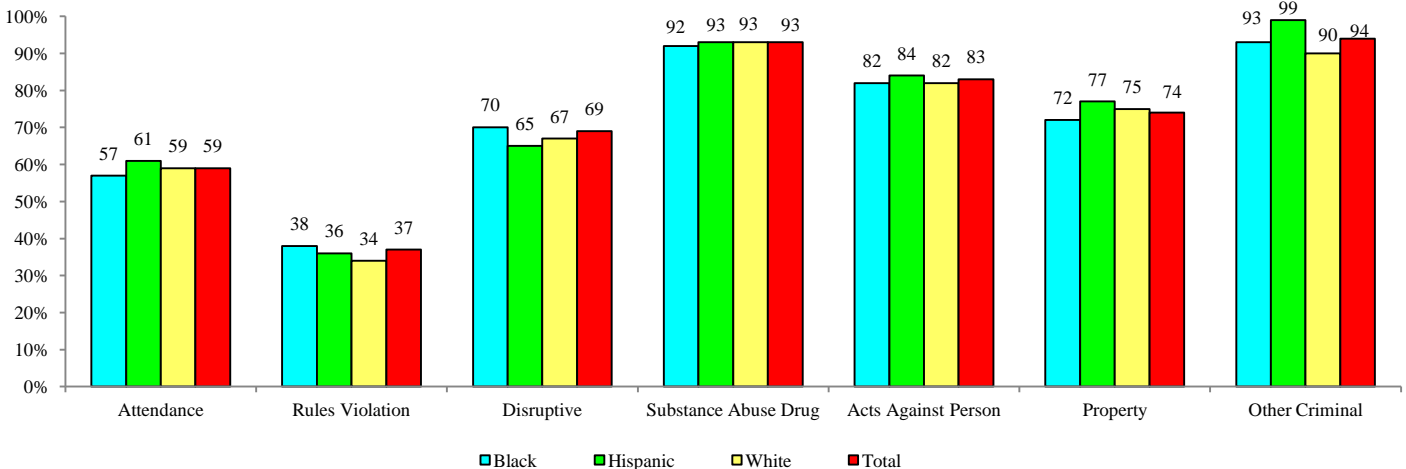
## Suspension/Incidents At A Glance

- The largest percent of incidents were at middle schools (46%), followed by high schools (32%), elementary schools (16%), and centers (5%).
- In-school suspensions (58%) occurred at more than twice the rate of out-of-school suspensions (21%).
- Black students registered higher suspension rates (17%) than did Hispanic (8%) or White (7%) students.
- Students from different ethnic groups were suspended at similar rates for the same incident.

**Student Suspension Rate**



**Rate of Incidents Resulting in an Internal, External, and/or AES Suspension by Race/Ethnicity, 2012-13**



## Additional Resources

- Each school has a unique School-wide Positive Behavior Plan that details prevention and intervention strategies intended to reduce suspensions, expulsions, and law enforcement involvement at the school level.
- Data summaries will assist school leaders in examining incidents and suspensions by student sub-populations, and target interventions on the most prevalent behavioral concerns, and student needs.
- All administrators are trained on the Breaking Barriers Professional Development series, which provides strategies for reducing suspensions and disciplinary referrals and creating a culture of learning in schools.  
<http://www.browardprevention.org/resources/professional-development/>
- The Preventing, Recidivism through Opportunities, Mentoring, Interventions, Supports and Education (PROMISE) Initiative addresses the unique needs of students who have committed behavioral infractions that would normally lead to arrest and entry into the juvenile justice system. <http://www.browardprevention.org/resources/professional-development/>
- Detailed school-by-school results: <http://www.broward.k12.fl.us/sar/Releases.htm>
- Information on intervention programs: <http://www.browardprevention.org>