

**THE SCHOOL BOARD OF BROWARD COUNTY, FLORIDA  
OFFICE OF THE SUPERINTENDENT**

**MR. ROBERT W. RUNCIE  
SUPERINTENDENT OF SCHOOLS**

*Signatures on File*

December 5, 2012

TO: School Board Members

FROM: Maurice L. Woods  
Chief Strategy & Operations Officer

VIA: Robert W. Runcie  
Superintendent of Schools

SUBJECT: **FLORIDA'S FEDERAL HIGH SCHOOL GRADUATION RATES AND  
DROPOUT RATES FOR BROWARD COUNTY PUBLIC SCHOOLS, 2011-12**

Friday, November 30, 2012, the Florida Department of Education (FDOE) released federal graduation and dropout rates for Florida and the 67 individual Florida school districts. State and district data are located online at the FDOE Education Information & Accountability Services Website (<http://www.fldoe.org/eias/eiaspubs/pubstudent.asp>). Additionally, school data is included in Appendix A and B of this memorandum.

In order to compare graduation rates from across the states, the U.S. Department of Education required the adoption of a uniform calculation method that uses a four-year cohort and counts only standard diploma students as graduates. In 2011-12, Florida transitioned from the National Governors Association (NGA) graduation rate to the federal graduation rate to meet this mandate. This streamlined graduation rate identifies students who receive GEDs, both regular and adult, as well as special diploma recipients as non-graduates. Further, transfers to adult education and Department of Juvenile Justice (DJJ) facilities remain in the cohort and count back toward the last school of enrollment as a non-graduate unless they complete their diploma requirements within four years.

**An examination of the data for Broward County Public Schools (BCPS) revealed an increase of 4.8 percentage points in the federal graduation rate from 71.6 percent in 2010-11 to 76.4 percent in 2011-12. The BCPS dropout rate increased from 1.6 percent in 2010-11 to 2.0 percent in 2011-12<sup>1</sup>.** Please note that graduation and drop-out rates are calculated independently. While graduation rates are determined by a four-year cohort of students, dropout rates are determined based on a single year's enrollment in grades 9-12. Therefore, these two numbers are not comparable to each other and must be examined independently.

While not a part of accountability, the FDOE has calculated the federal graduation rate for the state and districts for several school years prior to 2011-12. Figure 1 shows federal graduation rates for BCPS and Florida from 2006-07 through 2011-12. The figure shows graduation rates increasing over time with Broward outperforming the state each year.

---

<sup>1</sup> Federal Rates: 71.6% (=14,600/ 20,392); 76.4% (=14,572/19,074)  
Dropout Rates: 1.6% (=1,142/86,248); 2.0% (=1,719/86,194)

**FLORIDA'S FEDERAL HIGH SCHOOL GRADUATION RATES AND DROPOUT RATES FOR BROWARD COUNTY PUBLIC SCHOOLS, 2011-12**

December 5, 2012

Page 2

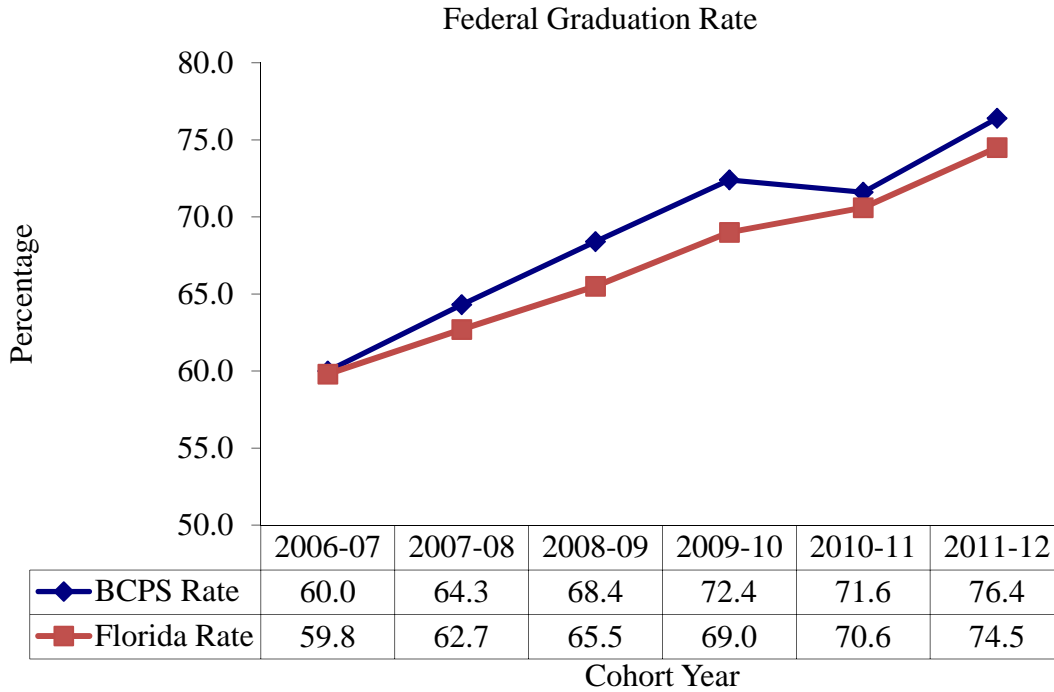


Figure 1. Federal Graduation Rates by Year, 2006-07 through 2011-12

While the District is responsible for all schools within Broward, Center schools serve a very specific population of students (needing additional time to graduate). Additionally, BCPS does not manage the oversight and accountability of charter schools as it does for traditional schools. Due to these differences, Figure 2 disaggregates Broward's graduation rate amongst traditional high schools, center schools, and charter schools. Figure 2 shows that the graduation rate of traditional high schools exceed that of center and charter schools. **The graduation rate of traditional high schools approach 89%, representing a five percentage point increase over the prior year.**

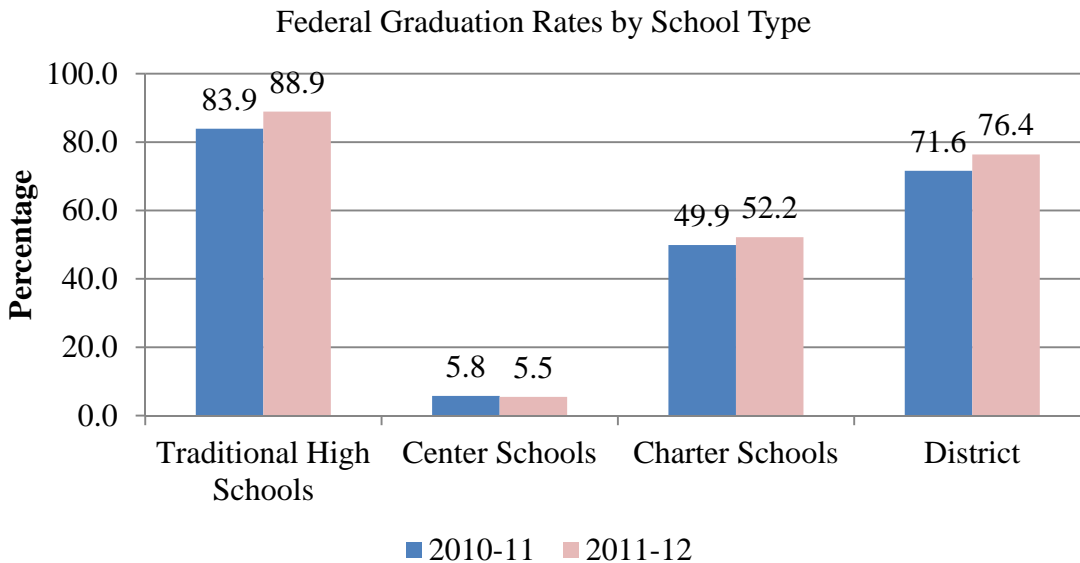


Figure 2. Federal Graduation Rates by School Type, 2010-11 & 2011-12

**FLORIDA'S FEDERAL HIGH SCHOOL GRADUATION RATES AND DROPOUT RATES FOR BROWARD COUNTY PUBLIC SCHOOLS, 2011-12**

December 5, 2012

Page 3

A comparison of graduation rates amongst the five largest school districts in Florida is displayed in Table 1. Broward's rate (76.4%) ranks second highest amongst the five largest districts with Palm Beach having the highest graduation rate (77%). **Overall, graduation rates increased for each of the five large school districts, as well as the State, with Broward registering the largest increase of almost 5 percentage points.**

Table 1

*Comparison of BCPS Federal Graduation Rates with Other Large Florida School Districts, 2006-07 through 2011-12*

	2006-07	2007-08	2008-09	2009-10	2010-11	2011-12	Change 2010-11 to 2011-12
<b>Broward</b>	<b>60.0</b>	<b>64.3</b>	<b>68.4</b>	<b>72.4</b>	<b>71.6</b>	<b>76.4</b>	<b>+4.8</b>
Hillsborough	62.1	63.9	66.1	66.7	69.3	72.6	+3.3
Miami-Dade	58.7	60.5	62.0	68.3	71.3	76.0	+4.7
Orange	57.1	61.9	67.4	71.8	71.4	73.9	+2.5
Palm Beach	61.8	65.5	70.1	74.8	74.3	77.0	+2.7
Florida	59.8	62.7	65.5	69.0	70.6	74.5	+3.9

The graduation rates were further examined by race/ethnicity, gender, and special service subgroups in the table below. Table 2 shows a comparison of federal graduation rates by race for Broward from 2006-07 through 2011-12. While the District graduation rate has increased by over 16 percentage points in the past six years, Table 2 shows Black, Hispanic, Native American (small enrollment), and Multi-racial groups registered larger increases over the same period of time. The graduation rate of **Black students rose by over seven percentage points from the prior year.**

Table 2

*BCPS Federal Graduation Rates by Race/Ethnicity, 2006-07 through 2011-12*

School Year	White, Non- Hispanic	Black, Non- Hispanic	Hispanic	Asian	Native American/ Alaskan Native	Multi- racial	Native Hawaiian or Other Pacific Islander
2006-07	69.7	49.3	60.7	80.5	71.7	61.2	NA
2007-08	72.8	54.2	65.7	84.0	71.7	68.5	NA
2008-09	76.4	58.8	70.9	86.7	70.0	74.0	NA
2009-10	79.3	63.6	75.2	88.6	54.8	78.9	NA
2010-11	80.5	61.1	74.6	92.2	58.1	76.8	NA
2011-12	83.6	68.2	78.4	89.5	66.7	80.4	33.3
Change 2010-11 to 2011-12	+3.1	+7.1	+3.8	-2.7	+8.6	+3.6	NA

Table 3 shows a comparison of federal graduation rates by race/ethnicity for Broward with the other four large school districts in Florida for 2011-12. As the table illustrates, among these five large districts, Broward registered the highest graduation rate for Hispanic students and second highest

**FLORIDA'S FEDERAL HIGH SCHOOL GRADUATION RATES AND DROPOUT RATES FOR BROWARD COUNTY PUBLIC SCHOOLS, 2011-12**

December 5, 2012

Page 4

for Black students. The table also shows that in 2011-12, graduation rate for Broward's White, Black, Hispanic, Asian, and Multi-racial students surpassed their state counterparts.

Table 3  
*Comparison of BCPS Federal Graduation Rates with Other Large Florida School Districts by Race, 2011-12*

	White, Non- Hispanic	Black, Non- Hispanic	Hispanic	Asian	Native American/ Alaskan Native	Multi- racial	Native Hawaiian or Other Pacific Islander
<b>Broward</b>	<b>83.6</b>	<b>68.2</b>	<b>78.4</b>	<b>89.5</b>	<b>66.7</b>	<b>80.4</b>	<b>33.3</b>
Hillsborough	81.1	58.4	68.1	90.4	72.5	75.2	100.0
Miami-Dade	85.1	68.3	76.9	87.9	75.0	87.8	NA
Orange	83.0	62.2	70.8	91.3	85.2	78.7	25.0
Palm Beach	86.6	64.8	72.2	91.6	75.4	84.5	28.6
Florida	79.4	63.7	72.9	88.4	69.7	78.6	62.5

Table 4 shows the BCPS federal graduation rates for males and females within Black, Hispanic, and White student groups for the past two school years. The results from this table show graduation rates increased for each of race/ethnicity and gender groups examined. **Specifically, Black male students registered the highest increase (7.2 percentage points), which was double that of White male students and shows that for this group of students, the District is starting to close the race/ethnicity gap.** Federal graduation rates by race/ethnicity within gender for the state of Florida were included as an additional comparison. **Broward's student groups registered higher graduation rates than their counterparts statewide.**

Table 4  
*BCPS Federal Graduation Rates by Race/Ethnicity within Gender, 2010-11 & 2011-12*

	Black, Non-Hispanic		Hispanic		White, Non-Hispanic	
	Male	Female	Male	Female	Male	Female
Broward 2010-11	53.7	68.8	70.5	79.0	76.9	84.4
Broward 2011-12	60.9	75.1	74.1	83.1	80.5	87.1
<b>Broward</b>						
<b>Change 2010-11 to 2011-12</b>	<b>+7.2</b>	<b>+6.3</b>	<b>+3.7</b>	<b>+4.1</b>	<b>+3.6</b>	<b>+2.7</b>
Florida 2010-11	52.6	64.8	65.2	73.8	72.1	80.6
Florida 2011-12	57.3	70.0	68.9	77.1	75.6	83.3
Florida						
Change 2010-11 to 2011-12	+4.7	+5.2	+3.7	+3.3	+3.5	+2.7

Finally, graduation rates were examined for students who fall into special populations which include At-Risk (as defined by FDOE school grades<sup>2</sup>), Free and/or Reduced Priced Lunch (FRL),

<sup>2</sup> Students with an Achievement Level of 1 or 2 on their 8<sup>th</sup> grade FCAT in both Reading and Mathematics.

# FLORIDA'S FEDERAL HIGH SCHOOL GRADUATION RATES AND DROPOUT RATES FOR BROWARD COUNTY PUBLIC SCHOOLS, 2011-12

December 5, 2012

Page 5

Students with Disabilities (SWD), and English Language Learners (ELL). Figure 3 shows graduation rates for each special population group has increased from the prior year. Large gaps, (over a 20 percentage points) separate the graduation rates for students who are in the At-Risk and SWD groups with those who are not.

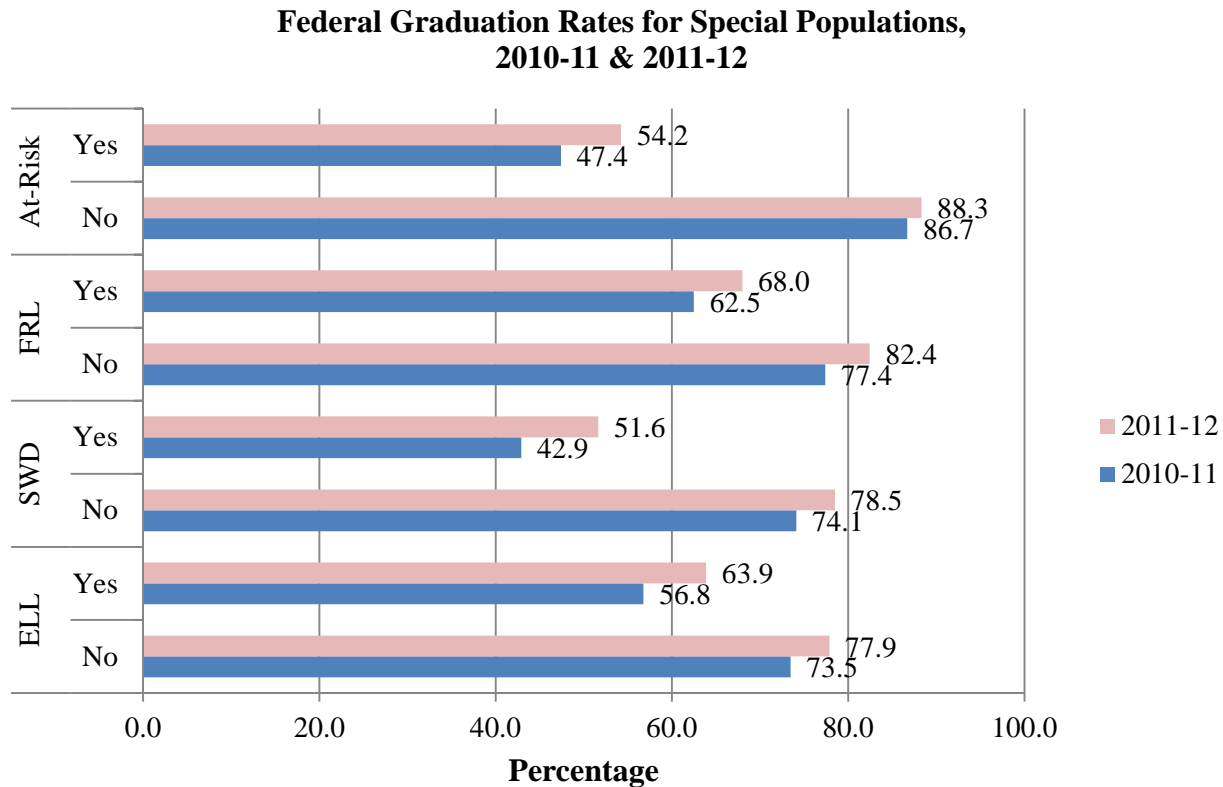


Figure 3. Federal Graduation Rates by Special Populations, 2010-11 & 2011-12

### Dropout Rates

To determine the dropout rate in any given year (e.g., 2011-12) FDOE uses the unduplicated count of students in grades 9 through 12 that were assigned a dropout code at the end of the school year divided by the total count of students in grade 9 through 12 attending school at any time during that year. This figure includes students who were expected to enroll, but did not.

**A comparison of BCPS dropout data from 2006-07 to 2011-12 indicates a 0.7 percentage point increase as shown in Table 5.** BCPS reported a lower incidence of dropouts than two (Miami-Dade and Palm Beach) of the other four largest districts.

**FLORIDA'S FEDERAL HIGH SCHOOL GRADUATION RATES AND DROPOUT RATES FOR BROWARD COUNTY PUBLIC SCHOOLS, 2011-12**

December 5, 2012

Page 6

Table 5

*Comparison of BCPS Dropout Rates with Other Large Florida School Districts, 2006-07 through 2011-12*

	2006-07	2007-08	2008-09	2009-10	2010-11	2011-12	Change 2010-11 to 2011-12
<b>Broward</b>	<b>3.2</b>	<b>2.0</b>	<b>2.1</b>	<b>1.6</b>	<b>1.3</b>	<b>2.0</b>	+0.7
Hillsborough	1.6	1.8	1.0	0.7	0.8	0.9	+0.1
Miami-Dade	5.8	4.5	3.9	4.0	3.5	2.7	-0.8
Orange	1.7	1.5	1.1	0.7	1.2	1.8	+0.6
Palm Beach	4.4	3.9	2.6	2.8	2.6	2.5	-0.1
Florida	3.3	2.6	2.3	2.0	1.9	1.9	0.0

*Dropout Rates by Race*

Table 6 shows a comparison of dropout rates by race for Broward from 2006-07 through 2011-12. Broward has registered increases in dropout rates for all the race/ethnic subgroups with the exception of Native American students. However, dropout rates for each race/ethnic subgroup in 2011-12 still remain lower than 2006-07 levels.

Table 6

*BCPS Dropout Rates by Race, 2006-07 through 2011-12*

School Year	White, Non- Hispanic	Black, Non- Hispanic	Hispanic	Asian	Native American/ Alaskan Native	Multi- racial	Native Hawaiian or Other Pacific Islander	Total
2006-07	2.1	4.7	2.5	1.9	2.9	2.5	NA	3.2
2007-08	1.2	2.9	1.6	0.7	3.1	1.4	NA	2.0
2008-09	1.3	2.9	1.6	0.6	3.0	2.2	NA	2.1
2009-10	1.0	2.5	0.9	0.5	1.5	0.9	NA	1.6
2010-11	0.8	2.1	0.8	0.4	1.3	1.0	NA	1.3
2011-12	1.5	2.9	1.4	0.5	1.2	1.7	0.0	2.0

Table 7 shows a comparison of dropout rates by race for Broward with the other four largest school districts in Florida for 2011-12. Amongst the five largest districts, Broward registered the second lowest dropout rate for Black and Hispanic students in the 2011-12 school year.

**FLORIDA’S FEDERAL HIGH SCHOOL GRADUATION RATES AND DROPOUT RATES FOR BROWARD COUNTY PUBLIC SCHOOLS, 2011-12**

December 5, 2012

Page 7

Table 7

*Comparison of BCPS Dropout Rates with Other Large Florida School Districts by Race, 2011-12*

	White, Non- Hispanic	Black, Non- Hispanic	Hispanic	Asian	Native American/ Alaskan Native	Multi- racial	Native Hawaiian or Other Pacific Islander
<b>Broward</b>	<b>1.5</b>	<b>2.9</b>	<b>1.4</b>	<b>0.5</b>	<b>1.2</b>	<b>1.7</b>	<b>0.0</b>
Hillsborough	0.7	1.5	0.9	0.1	1.0	0.8	0.0
Miami-Dade	1.9	4.8	2.0	1.7	1.9	1.2	3.9
Orange	0.9	3.4	1.7	0.4	0.8	0.3	3.3
Palm Beach	1.6	3.8	2.6	0.6	3.4	1.6	10.8
Florida	1.4	3.1	1.9	0.6	2.4	1.3	2.2

Additionally, two summary appendices (Appendix A and B) are included to shed light on graduation and dropout performance for schools in Broward. Appendix A shows Federal graduation rates along with At-Risk students for Broward schools in 2010-11 & 2011-12. Appendix B shows a comparison of school dropout rates from 2009-10 through 2011-12.

**The results of Appendix A show that 73% (n=24) of the 33 traditional high schools increased their federal graduation rate by at least one percentage point from 2010-11 to 2011-12. There was also a dramatic increase (over 10 percentage points) in the federal graduation rate for Boyd Anderson, Broward Virtual Education, Northeast, and Plantation high schools. Finally, 13 traditional high schools and 5 charter schools registered graduation rates of 90% or more.**

Attached, please find the report released by the Florida Department of Education regarding 2011-12 graduation and dropout rates. This memorandum may be accessed via the Research Services Web site (<http://www.broward.k12.fl.us/sar/Releases.htm>). If you have any comments concerning this memorandum, please contact **Paul Houchens, Director, or Richard Baum, Research Specialist, Student Assessment and Research at 754-321-2500.**

DKB/MLW/NB/PWH/RGB:ds

Attachments

- cc: Senior Leadership Team  
 Sharon Airaghi, Chief Service Quality Officer  
 Directors, School Performance and Accountability  
 Jodi Perry, Director, Charter Schools Support  
 Principals  
 Jodi Klein, Chairperson, District Advisory Council  
 Linda Nestor, President, Broward County Council of PTA

References

Florida Department of Education. (2012). *Florida’s Federal High School Graduation Rates and Dropout Rates, 2011-12* Tallahassee, FL: Florida Department of Education. Retrieved December 3, 2012, from [http://www.fldoe.org/eias/eiaspubs/word/FedGradRate\\_1112.doc](http://www.fldoe.org/eias/eiaspubs/word/FedGradRate_1112.doc)

**FLORIDA'S FEDERAL HIGH SCHOOL GRADUATION RATES AND DROPOUT RATES  
FOR BROWARD COUNTY PUBLIC SCHOOLS, 2011-12**

December 5, 2012

Page 8

Appendix A

*Federal and At-Risk Graduation Rates by School 2010-11 & 2011-12*

School	Federal				At-Risk			
	%	N	n	%	%	N	n	%
	2010-11		2011-12		2010-11		2011-12	
District Total	71.6	19,074	14,572	76.4	47.4	3,858	2,092	54.2
Traditional High Schools								
Anderson, Boyd H. High	68.1	350	274	78.3	59.0	109	81	74.3
Atlantic Technical High School	95.8	126	122	96.8	NA	*	*	*
Broward Virtual Education	72.4	85	72	84.7	NA	*	*	*
Coconut Creek High	70.9	361	276	76.5	69.8	135	96	71.1
College Academy @ BCC Central	100.0	169	169	100.0	NA	--	--	--
Cooper City High	89.9	545	519	95.2	64.5	44	35	79.5
Coral Glades High	81.3	524	439	83.8	62.0	96	63	65.6
Coral Springs High	83.5	560	489	87.3	65.0	84	58	69.0
Cypress Bay High	97.3	954	923	96.8	86.4	51	46	90.2
Deerfield Beach High	71.8	544	429	78.9	63.0	129	86	66.7
Dillard High	81.1	332	302	91.0	66.9	80	64	80.0
Douglas, Stoneman M. High	96.3	743	708	95.3	89.7	58	48	82.8
Ely, Blanche High	81.1	471	411	87.3	62.6	103	78	75.7
Everglades High	82.1	578	502	86.9	70.9	86	61	70.9
Flanagan, Charles W. High	85.1	705	662	93.9	62.7	108	98	90.7
Fort Lauderdale High	76.4	385	328	85.2	47.4	61	41	67.2
Hallandale High	84.2	258	232	89.9	79.3	75	66	88.0
Hollywood Hills High	76.2	373	291	78.0	59.4	71	46	64.8
McArthur High	83.9	463	416	89.8	66.3	89	66	74.2
McFatter, William Technical High	97.6	131	128	97.7	NA	*	*	*
Miramar High	86.3	551	498	90.4	79.3	165	142	86.1
Monarch High	89.2	462	408	88.3	72.8	90	74	82.2
Northeast High	81.0	424	394	92.9	69.1	58	49	84.5
Nova High	91.6	550	522	94.9	80.8	77	69	89.6
Piper High	76.6	600	493	82.2	62.2	169	130	76.9
Plantation High	71.0	461	410	88.9	57.1	107	89	83.2
Pompano Beach Instit. of Int'l. Studies	98.9	312	311	99.7	NA	*	*	*
South Broward High	75.2	402	338	84.1	59.2	87	60	69.0
South Plantation High	80.4	494	385	77.9	64.4	94	57	60.6
Stranahan High	75.5	360	303	84.2	60.4	71	46	64.8
Taravella, J. P. High	88.8	611	537	87.9	73.2	90	69	76.7
West Broward High	97.1	644	619	96.1	83.9	55	49	89.1
Western High	86.9	648	582	89.8	68.3	75	54	72.0

*(Appendix continues)*



**FLORIDA'S FEDERAL HIGH SCHOOL GRADUATION RATES AND DROPOUT RATES  
FOR BROWARD COUNTY PUBLIC SCHOOLS, 2011-12**

December 5, 2012

Page 9

Appendix A (continued)

School	Federal				At-Risk			
	%	N	n	%	%	N	n	%
	2010-11	2011-12			2010-11	2011-12		
Center Schools								
Bright Horizons School	0.0	*	*	*	NA	--	--	--
Cross Creek School	7.1	12	2	16.7	NA	*	*	*
Cypress Run Education Center	0.0	23	0	0.0	NA	*	*	*
Dave Thomas Education Center	6.6	257	21	8.2	2.6	117	6	5.1
Hallandale Adult & Community Center	4.4	252	4	1.6	5.6	95	1	1.1
Lanier-James Education Center	0.0	14	2	14.3	0.0	*	*	*
Off Campus Learning Centers	3.3	807	10	1.2	0.7	312	2	0.6
Pine Ridge Education Center	12.9	15	1	6.7	5.9	*	*	*
Quest Center, The	NA	13	0	0.0	NA	--	--	--
Seagull School	8.8	106	12	11.3	8.1	53	3	5.7
Sheridan Technical Center	21.4	*	*	*	NA	*	*	*
Sunset School	21.7	25	3	12.0	NA	12	2	16.7
Whiddon-Rogers Education Center	10.7	394	50	12.7	4.4	151	12	7.9
Whispering Pines School	7.4	24	1	4.2	0.0	10	0	0.0
Wingate Oaks Center	NA	14	0	0.0	NA	--	--	--
Charter Schools								
Coral Springs Charter School High	94.0	199	194	97.5	82.9	31	30	96.8
Dolphin Park High Charter	7.7	201	16	8.0	1.0	94	2	2.1
Eagle Academy	54.0	47	22	46.8	50.0	17	7	41.2
International School Broward High	73.3	37	17	45.9	NA	*	*	*
Lauderhill High Charter	7.6	151	17	11.3	4.8	75	5	6.7
Life Skills High	4.9	156	12	7.7	2.8	73	5	6.8
Maverick's High - Central Broward	12.3	151	17	11.3	6.6	70	4	5.7
Maverick's High - North Broward	NA	87	8	9.2	NA	40	3	7.5
North University High Charter	18.9	133	27	20.3	8.2	42	5	11.9
Parkway Academy - High	75.0	106	72	67.9	63.6	39	22	56.4
Pembroke Pines Charter School - High	96.7	420	405	96.4	87.5	36	30	83.3
Somerset Academy High	93.1	146	138	94.5	85.7	23	22	95.7
Somerset Academy High Miramar	NA	13	12	92.3	NA	*	*	*
Somerset Conservatory High	100.0	15	15	100.0	NA	*	*	*

(Appendix continues)

**FLORIDA'S FEDERAL HIGH SCHOOL GRADUATION RATES AND DROPOUT RATES  
FOR BROWARD COUNTY PUBLIC SCHOOLS, 2011-12**

December 5, 2012

Page 10

Appendix A (continued)

School	Federal				At-Risk			
	%	N	n	%	%	N	n	%
	2010-11	2011-12		2010-11	2011-12			
				DJJ Sites				
Broward Detention Center	0.0	47	0	0.0	0.0	*	*	*
AMIkids of Greater Fort Lauderdale	NA	*	*	*	NA	*	*	*
PACE - Practical Acad Cultural Education	NA	*	*	*	NA	*	*	*
Pompano Substance Abuse	NA	*	*	*	NA	--	--	--
Thompson Academy	NA	10	0	0.0	NA	*	*	*

Note. "\*" indicates that graduation and dropout data were removed for schools with less than 10 students in the cohort.  
"--" indicates no students in the graduation cohort.

**FLORIDA'S FEDERAL HIGH SCHOOL GRADUATION RATES AND DROPOUT RATES  
FOR BROWARD COUNTY PUBLIC SCHOOLS, 2011-12**

December 5, 2012

Page 11

Appendix B

*Comparison of Dropout Rates by School, 2009-10 through 2011-12*

School	Dropout Rate 2009-10 %	Dropout Rate 2010-11 %	Dropout Rate 2011-12 %	Change in Dropout Rate 2010-11 to 2011-12
Traditional High Schools				
Anderson, Boyd H. High	2.5	1.1	1.9	0.8
Atlantic Technical High School	0.0	0.0	0.0	0.0
Broward Virtual Education	0.3	1.1	0.7	-0.4
Coconut Creek High	0.1	0.0	0.2	0.2
College Academy @ BCC	0.0	0.0	0.0	0.0
Cooper City High	0.0	0.1	0.3	0.2
Coral Glades High	0.1	0.0	0.2	0.2
Coral Springs High	0.6	0.2	0.5	0.3
Cypress Bay High	0.1	0.0	0.0	0.0
Deerfield Beach High	1.0	0.5	0.2	-0.3
Dillard High	0.2	0.0	0.3	0.3
Douglas, Stoneman M. High	0.0	0.1	0.0	-0.1
Ely, Blanche High	1.5	0.6	0.3	-0.3
Everglades High	1.0	0.5	0.0	-0.5
Flanagan, Charles W. High	0.0	0.0	0.0	0.0
Fort Lauderdale High	0.3	0.4	0.0	-0.4
Hallandale High	0.4	0.1	0.1	0.0
Hollywood Hills High	0.1	0.1	0.0	-0.1
McArthur High	0.4	0.2	0.4	0.2
McFatter, William T. High	0.2	0.5	0.2	-0.3
Miramar High	0.2	0.1	0.3	0.2
Monarch High	0.4	0.0	0.0	0.0
Northeast High	0.7	0.0	0.0	0.0
Nova High	0.6	0.0	0.2	0.2
Piper High	1.6	1.1	0.5	-0.6
Plantation High	0.1	1.0	0.7	-0.3
Pompano Beach Instit. of Int'l. Studies	0.0	0.0	0.0	0.0
South Broward High	0.2	0.1	0.0	-0.1
South Plantation High	1.1	2.2	0.5	-1.7
Stranahan High	0.5	0.2	0.6	0.4
Taravella, J. P. High	0.1	0.1	0.0	-0.1
West Broward High	0.1	0.0	0.2	0.2
Western High	0.2	0.4	1.7	1.3
Center Schools				
Bright Horizons School	4.7	0.0	0.0	0.0
Cross Creek School	7.5	5.4	14.1	8.7
Cypress Run Education Center	8.4	7.2	2.2	-5.0
Dave Thomas Education Center	16.2	14.4	16.1	1.7

*(Appendix continues)*

**FLORIDA'S FEDERAL HIGH SCHOOL GRADUATION RATES AND DROPOUT RATES  
FOR BROWARD COUNTY PUBLIC SCHOOLS, 2011-12**

December 5, 2012

Page 12

Appendix B (continued)

School	Dropout Rate 2009-10 %	Dropout Rate 2010-11 %	Dropout Rate 2011-12 %	Change in Dropout Rate 2010-11 to 2011-12
Hallandale Adult & Community Center	15.3	5.0	19.9	14.9
Lanier-James Education Center	6.7	13.3	8.9	-4.4
Off Campus Learning Centers	13.0	2.3	34.1	31.8
Pine Ridge Education Center	0.0	2.4	1.9	-0.5
Quest Center, The	5.0	1.4	0.0	-1.4
Seagull School	22.8	34.5	25.1	-9.4
Sheridan Technical Center	5.1	8.2	0.0	-8.2
Sunset School	3.5	10.8	6.2	-4.6
Whiddon-Rogers Education Center	7.8	4.1	25.1	21.0
Whispering Pines School	6.4	12.0	7.3	-4.7
Wingate Oaks Center	0.0	5.0	1.8	-3.2
Charter Schools				
Ben Gamla Charter High School	NA	NA	4.0	NA
Coral Springs Charter School High	0.1	0.0	0.2	0.2
Dolphin Park High Charter	7.8	2.3	0.1	-2.2
Eagle Academy	0.0	0.4	0.4	0.0
International School of Broward	0.8	11.7	1.1	-10.6
Lauderhill High Charter	3.3	0.0	0.0	0.0
Life Skills High	24.4	33.7	16.3	-17.4
Mavericks High Of Central Broward County	NA	NA	1.5	NA
Mavericks High Of North Broward County	NA	NA	1.2	NA
North University High Charter	0.6	0.5	0.2	-0.3
Parkway Academy - High	0.5	0.8	0.8	0.0
Pembroke Pines Charter School - High	0.0	0.0	0.0	0.0
Somerset Academy Charter High School Miramar Campus	NA	NA	1.3	NA
Somerset Academy High	0.2	1.0	0.3	-0.7
Somerset Conservatory High	0.0	0.0	0.0	0.0
Somerset Preparatory Academy Charter High At North Lauderdale	NA	NA	0.8	NA

Note. "--" indicates that graduation and dropout data were removed for schools with less than 10 students in the cohort.

# Data Report

## Florida's Federal High School Graduation Rates and Dropout Rates, 2011-12

Series 2013-04D

November 2012

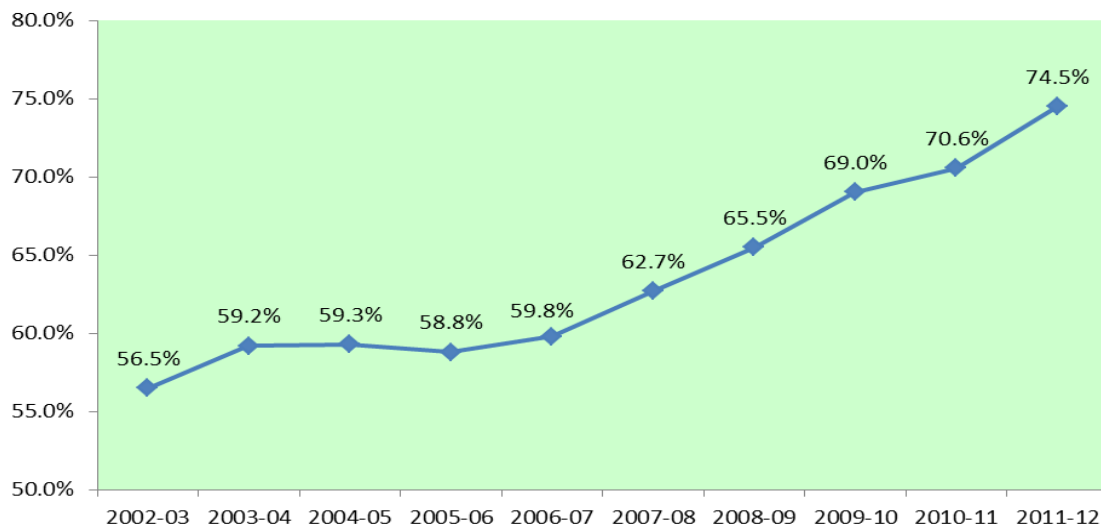
### Florida's Federal Graduation Rate

Florida's federal high school graduation rate increased almost four percentage points over the last year and has increased during the past ten years. The rate rose from 56.5 percent in 2002-03 to 74.5 percent in 2011-12. Figure 1 below shows the trend in federal graduation rates from 2002-03 through 2011-12.

Federal regulations require each state to calculate a four-year adjusted cohort graduation rate, which includes standard diplomas but excludes GEDs, both regular and adult, and special diplomas. The US Department of Education (USED) adopted this calculation method in an effort to develop uniform, accurate, and comparable graduation rates across all states. The USED required states to begin calculating the new graduation rate in 2010-11. This graduation rate is currently used in Florida's school accountability system in the high school grades calculation.

Florida is calculating and reporting only the federal uniform graduation rate beginning in 2011-12. This version replaces the National Governors Association (NGA) rate, which is no longer calculated, for high school grades accountability. The federal rate meets the requirements of Florida's NGA compact.<sup>1</sup>

Figure 1: Federal Graduation Rates, 2002-03 through 2011-12



Florida Department of Education  
Pam Stewart, Commissioner

<sup>1</sup> Implementing Graduation Counts, State Progress to Date, 2010, NGA Center for Best Practices, December 2010.

A cohort is defined as a group of students on the same schedule to graduate. The graduation rate measures the percentage of students who graduate within four years of their first enrollment in ninth grade. Subsequent to their enrollment in ninth grade, exiting transfers and deceased students are removed from the calculation. Entering transfer students are included in the count of the class with which they are scheduled to graduate, based on their date of enrollment. District-level graduation rates are provided in tables 8 and 9. School-level graduation rates are available online at <http://www.fldoe.org/ARRA/arra-Indicator.asp> and [http://www.fldoe.org/eias/eiaspubs/xls/FedGradRateRace\\_1112.xls](http://www.fldoe.org/eias/eiaspubs/xls/FedGradRateRace_1112.xls).

In the federal calculation, more stringent guidelines are prescribed for not only the definition of a graduate, but also for the definition of a transfer. Students who transfer to adult education programs or Department of Juvenile Justice (DJJ) facilities remain with their regular high schools' cohorts.

If you have questions regarding the content of this publication, please contact the Florida Department of Education, Office of Education Information and Accountability Services at (850) 245-0400, or send e-mail to [askeias@fldoe.org](mailto:askeias@fldoe.org).

### Florida's Rate versus National Graduation Rate Rankings

While all states now have a longitudinal student data system in place\* and the USED requires all states to report a federal uniform graduation rate, publication of national data tends to lag by two to three years. Therefore, a national comparison of states' federal graduation rates is not currently available. The National Center for Education Statistics reports average freshman graduation rates; however, these rates are estimates of the percentage of high school students who graduate on time. These rates use aggregate student enrollment data to estimate the size of an incoming freshman class and aggregate counts of the number of regular diplomas awarded four years later. These rates are accessible through the Common Core of Data at <http://nces.ed.gov/ccd/bat/>.

\*Data Quality Campaign, *Data for Action 2011*, Washington, D.C.: Data Quality Campaign, 3; accessed 2 Feb 2012, available at <http://dataqualitycampaign.org/files/DFA2011%20Mini%20report%20findings%20Dec1.pdf>.

### Graduation Rates by Race/Ethnicity and Gender

Florida's graduation rates vary by race/ethnicity, but all groups have increased their federal graduation rate over the last few years. The graduation rates for Black or African American and Hispanic/Latino students have increased the most (over 13 percentage points) since 2007-08.

Beginning with the 2010-11 school year, Florida implemented new data elements for collecting and reporting student demographic data in compliance with changes made by the U.S. Office of Management and Budget. These revisions allow students to select more than one race and to report their ethnicities and races separately when reporting their demographic information. For ethnicity, students select whether they are of Hispanic or Latino origin. All students who indicated that they are Hispanic or Latino are included only in the Hispanic/Latino rates in this report; they are not included in the racial categories they have selected.

For race, students select one or more of the following: American Indian or Alaska Native, Asian, Black or African American, Native Hawaiian or Other Pacific Islander, White. Students who select more than one racial category, but do not indicate that they are Hispanic or Latino, are included in the Two or More Races category in this report.

**Table 1: Federal Graduation Rates by Race/Ethnicity, 2007-08 through 2011-12**

	White	Black or African American	Hispanic/Latino	Asian	American Indian or Alaska Native	Two or More Races	Native Hawaiian or Other Pacific Islander	Total
<b>2007-08</b>	69.2%	50.0%	59.8%	79.9%	64.6%	67.6%		62.7%
<b>2008-09</b>	71.2%	53.7%	63.4%	83.4%	65.3%	71.7%		65.5%
<b>2009-10</b>	74.1%	57.9%	68.1%	86.0%	67.5%	74.2%		69.0%
<b>2010-11</b>	76.2%	58.6%	69.4%	85.9%	69.7%	75.1%	N/A	70.6%
<b>2011-12</b>	79.4%	63.7%	72.9%	88.4%	69.7%	78.6%	62.5%	74.5%

**Table 2: Federal Graduation Rates by Gender within Race/Ethnicity, 2007-08 through 2011-12**

	White Female	White Male	Black or African American Female	Black or African American Male	Hispanic /Latino Female	Hispanic/Latino Male	Asian Female	Asian Male
<b>2007-08</b>	74.4%	64.3%	57.9%	42.4%	65.4%	54.2%	82.5%	77.4%
<b>2008-09</b>	76.3%	66.4%	61.5%	46.3%	69.6%	57.6%	86.3%	80.6%
<b>2009-10</b>	79.1%	69.5%	65.4%	50.7%	73.8%	62.7%	89.3%	82.8%
<b>2010-11</b>	80.6%	72.1%	64.8%	52.6%	73.8%	65.2%	88.0%	84.0%
<b>2011-12</b>	83.3%	75.6%	70.0%	57.3%	77.1%	68.9%	90.4%	86.5%

**Table 3: Federal Graduation Rates by Gender within Race/Ethnicity, 2007-08 through 2011-12, continued**

	American Indian or Alaska Native Female	American Indian or Alaska Native Male	Two or More Races Female	Two or More Races Male	Native Hawaiian or Other Pacific Islander Female	Native Hawaiian or Other Pacific Islander Male	Total Female	Total Male
<b>2007-08</b>	69.8%	60.1%	72.8%	62.2%			68.6%	57.1%
<b>2008-09</b>	68.7%	62.0%	75.7%	67.3%			71.4%	59.9%
<b>2009-10</b>	73.2%	62.6%	78.8%	69.3%			74.7%	63.6%
<b>2010-11</b>	73.3%	66.5%	79.7%	70.8%			75.3%	66.0%
<b>2011-12</b>	73.6%	65.6%	81.4%	75.8%	61.5%	63.2%	78.9%	70.2%

### Diploma Types

Florida students may receive several types of diplomas upon completion of high school. A complete list of the diploma definitions is provided in Appendix D of the *Procedures for Reviewing and Updating the 2011-12 Cohort* technical guide, available at <http://www.fldoe.org/eias/eiaspubs/word/gradgde1112.doc>. Table 4 details the number of each type of diploma awarded for the past five cohorts.

**Table 4: Diploma Types by Number of Diplomas Awarded (Cohort Based)**

Diploma Types	Diploma Definitions	2007-08	2008-09	2009-10	2010-11	2011-12
<b>Standard Diplomas*</b>						
<b>W06</b>	Any student who graduated from school and met all of the requirements to receive a standard diploma	125,650	127,855	132,783	133,766	132,333
<b>W43</b>	Any adult student who graduated from school with a standard diploma	393	343	297	227	166
<b>W52</b>	Any adult student who graduated from school with a standard diploma and satisfied the graduation test requirement through an alternate assessment	11	14	12	6	8
<b>W6A</b>	Any student who graduated from school and met all of the requirements to receive a standard diploma, based on the 18-credit college preparatory graduation option	89	62	89	15	32
<b>W6B</b>	Any student who graduated from school and met all of the requirements to receive a standard diploma, based on the 18-credit career preparatory graduation option	19	18	27	6	14
<b>WFA</b>	Any student who graduated from school with a standard diploma based on an 18-credit college preparatory graduation option and satisfied the graduation test requirement through an alternate assessment	14	12	8	6	3
<b>WFB</b>	Any student who graduated from school with a standard diploma based on an 18-credit career preparatory graduation option and satisfied the graduation test requirement through an alternate assessment	2	8	8	1	0
<b>WFT</b>	Any student who graduated from school with a standard diploma and satisfied the graduation test requirement through an alternate assessment (For students meeting accelerated high school graduation option requirements, see WFA and WFB.)	6,546	9,410	10,458	5,865	6,716
<b>WFW</b>	Any student who graduated from school with a standard diploma and an FCAT waiver	2,870	2,767	2,700	3,447	2,681
<b>Special Diplomas</b>						
<b>W07</b>	Any student who graduated from school with a special diploma based on option one--mastery of Sunshine State Standards for Special Diploma	3,773	3,462	3,750	3,408	2,661
<b>W27</b>	Any student who graduated from school with a special diploma based on option two--mastery of employment and community competencies	656	489	401	217	161
<b>GED-based Diplomas</b>						
<b>W10</b>	Any student in a GED Exit Option Model who passed the GED Tests and the graduation test and was awarded a standard diploma	2,604	2,585	1,740	927	560
<b>W45</b>	Any adult student who left school with a State of Florida diploma (GED)	3,435	3,223	2,365	2,906	1,010
<b>WGA</b>	Any student in a GED Exit Option Model who passed the GED Tests, satisfied the graduation test requirement through an alternate assessment, and was awarded a standard diploma	53	81	83	21	25
<b>WGD</b>	Any student participating in the GED Exit Option Model who passed the GED Tests but did not pass the graduation test and was awarded a State of Florida diploma	1,156	995	931	578	529
<b>TOTAL</b>		<b>147,271</b>	<b>151,324</b>	<b>155,652</b>	<b>151,396</b>	<b>146,899</b>

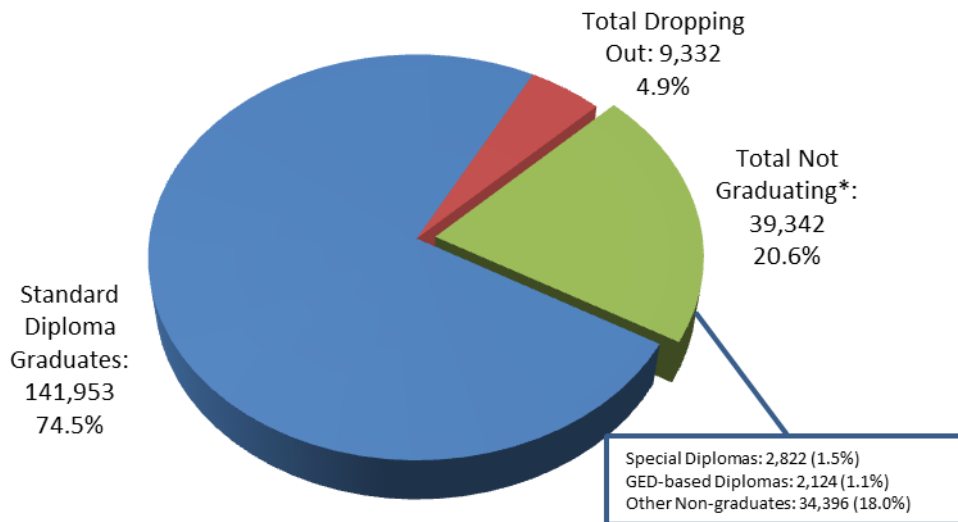
\*These diploma types are counted as graduates in the federal rate.

### Withdrawal Status of All Students in the Graduation Cohort

Florida's federal graduation rate is 74.5 percent, but that doesn't mean that 25.5 percent of students in the cohort are dropouts. In a cohort students can be classified as graduates, dropouts, and non-graduates. The non-graduates are those students who have been retained and are still in school or students who received certificates of completion or GED-based diplomas. In Florida's 2011-12 federal graduation rate cohort, 4.9 percent of the students were dropouts. Figure 2 illustrates the proportion students of the 2011-12 federal cohort who graduated, dropped out, or did not graduate. District-level cohort dropout rates are provided in Table 10.



**Figure 2: 2011-12 Cohort by Withdrawal Code Category**



\*Non-graduates for the federal graduation rate include special diplomas, certificates of completion, GED recipients, and repeaters.

Florida also calculates a single-year dropout rate. This sometimes causes confusion when comparing the graduation rate to Florida's published single-year dropout rate. These rates are not inverses of each other. The differences are as follows:

The rates apply to different periods of time.

- Graduation rate is a four-year, cohort-based indicator.
- Single-year dropout rate is a one-year indicator.

The rates apply to different populations.

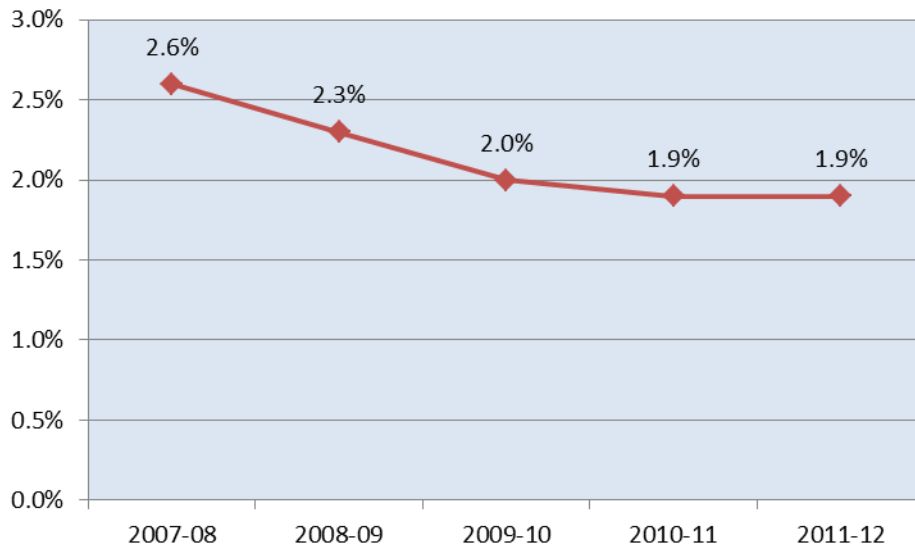
- Graduation rate tracks the progress of a group of students who entered the same grade at the same time over a four-year period.
- Single-year dropout rate identifies **all** ninth- through twelfth-grade students in **one** year.

### Single-Year Dropout Rates

Florida's ninth through twelfth grade, single-year dropout rate is the percentage of ninth- through twelfth-grade dropouts compared to the ninth- through twelfth-grade total, year-long student membership. A dropout is defined as a student who withdraws from school for any of several reasons without transferring to another school, home education program, or adult education program. The definitions for a dropout are listed below in Table 7.

Florida's 2011-12 ninth through twelfth grade, single year dropout rate held steady after four consecutive years of decline. District-level single-year dropout rates are provided in Tables 12 and 13. For school-level dropout rates, please visit <http://www.fldoe.org/eias/eiaspubs/xls/dropschl1112.xls>.

**Figure 3: 9<sup>th</sup>-12<sup>th</sup> Grade Single-Year Dropout Rates, 2007-08 through 2011-12**



**Table 5: 9<sup>th</sup>-12<sup>th</sup> Grade Single-Year Dropouts by Gender within Race/Ethnicity, 2007-08 through 2011-12**

	White			Black or African American			Hispanic/Latino			Asian		
	F	M	Total	F	M	Total	F	M	Total	F	M	Total
<b>2007-08</b>	1.6%	2.1%	1.9%	3.3%	4.0%	3.6%	2.7%	3.5%	3.1%	0.8%	1.2%	1.0%
<b>2008-09</b>	1.4%	1.8%	1.6%	3.0%	3.7%	3.4%	2.2%	2.9%	2.5%	0.6%	1.0%	0.8%
<b>2009-10</b>	1.2%	1.6%	1.4%	2.6%	3.5%	2.9%	2.1%	3.0%	2.5%	0.7%	0.8%	0.8%
<b>2010-11</b>	1.1%	1.6%	1.4%	2.5%	3.4%	3.0%	1.7%	2.5%	2.1%	0.5%	0.8%	0.6%
<b>2011-12</b>	1.2%	1.7%	1.4%	2.6%	3.6%	3.1%	1.6%	2.2%	1.9%	0.6%	0.6%	0.6%

**Table 6: 9<sup>th</sup>-12<sup>th</sup> Grade Single-Year Dropouts by Gender within Race/Ethnicity, 2007-08 through 2011-12, continued**

	American Indian/Alaska Native			Two or More Races			Pacific Islander			Total
	F	M	Total	F	M	Total	F	M	Total	
<b>2007-08</b>	2.5%	1.8%	2.1%	1.8%	1.9%	1.8%				2.6%
<b>2008-09</b>	1.9%	2.6%	2.3%	1.4%	1.7%	1.6%				2.3%
<b>2009-10</b>	2.1%	2.4%	2.2%	1.1%	1.7%	1.4%				2.0%
<b>2010-11</b>	1.0%	2.0%	1.5%	1.1%	1.5%	1.3%	0.5%	2.8%	1.7%	1.9%
<b>2011-12</b>	2.1%	2.7%	2.4%	1.1%	1.6%	1.3%	1.8%	2.5%	2.2%	1.9%

**Table 7: Dropout Withdrawal Codes and Definitions**

DNE - Any PK-12 student who was expected to attend a school but did not enter as expected for unknown reasons
W05 - Any student age 16 or older who leaves school voluntarily with no intention of returning
W13 - Any PK-12 student withdrawn from school due to court action
W15 - Any PK-12 student who is withdrawn from school due to nonattendance
W18 - Any PK-12 student who withdraws from school due to medical reasons
W21 - Any PK-12 student who is withdrawn from school due to being expelled
W22 - Any PK-12 student whose whereabouts is unknown
W23 – Any PK-12 student who withdraws from school for any reason other than W01 - W22 or W24 – W27

**Table 8: Federal Graduation Rates, 2007-08 through 2011-12\***

	District	2007-08	2008-09	2009-10	2010-11	2011-12
01	Alachua	56.4%	55.9%	62.6%	63.4%	68.7%
02	Baker	60.4%	68.9%	64.5%	65.0%	72.8%
03	Bay	63.2%	64.2%	69.2%	68.1%	73.7%
04	Bradford	56.9%	59.0%	51.8%	61.1%	64.2%
05	Brevard	75.9%	78.5%	80.6%	81.4%	85.2%
06	Broward	64.3%	68.4%	72.4%	71.6%	76.4%
07	Calhoun	73.1%	71.3%	76.1%	74.1%	77.3%
08	Charlotte	72.6%	70.7%	73.4%	73.0%	79.2%
09	Citrus	62.8%	65.9%	68.9%	74.5%	78.0%
10	Clay	63.7%	67.0%	70.0%	74.4%	71.1%
11	Collier	65.9%	68.1%	70.6%	72.5%	78.4%
12	Columbia	53.3%	56.6%	59.9%	63.2%	64.8%
13	Dade	60.5%	62.0%	68.3%	71.3%	76.0%
14	DeSoto	53.9%	57.8%	53.2%	63.1%	67.9%
15	Dixie	57.7%	61.9%	56.0%	52.5%	77.1%
16	Duval	53.5%	55.8%	58.3%	63.3%	67.7%
17	Escambia	53.5%	56.2%	55.5%	57.7%	62.1%
18	Flagler	63.9%	65.1%	69.7%	70.1%	74.8%
19	Franklin	46.5%	62.4%	57.8%	59.0%	59.0%
20	Gadsden	43.0%	48.2%	43.0%	55.1%	61.4%
21	Gilchrist	67.1%	77.3%	77.7%	79.9%	85.9%
22	Glades	32.5%	56.4%	56.0%	47.7%	64.8%
23	Gulf	79.4%	75.4%	81.9%	77.6%	84.7%
24	Hamilton	50.8%	47.7%	52.6%	65.0%	55.0%
25	Hardee	52.1%	57.6%	60.4%	65.7%	63.6%
26	Hendry	58.0%	60.6%	69.2%	65.6%	73.5%
27	Hernando	63.7%	65.4%	68.8%	71.5%	74.2%
28	Highlands	52.2%	59.7%	58.8%	60.2%	62.1%
29	Hillsborough	63.9%	66.1%	66.7%	69.3%	72.6%
30	Holmes	75.5%	79.3%	78.2%	75.1%	72.8%
31	Indian River	65.2%	67.6%	67.2%	71.7%	80.9%
32	Jackson	65.8%	63.4%	68.1%	64.7%	69.2%
33	Jefferson	34.2%	39.2%	43.5%	38.6%	42.6%
34	Lafayette	75.9%	64.1%	81.3%	63.8%	65.8%
35	Lake	63.5%	66.1%	70.9%	75.4%	78.2%
36	Lee	65.0%	65.7%	69.8%	68.9%	71.9%
37	Leon	63.2%	64.4%	64.1%	68.4%	71.3%
38	Levy	55.6%	55.0%	61.1%	61.0%	72.2%
39	Liberty	60.7%	61.8%	58.2%	53.5%	64.2%
40	Madison	54.0%	70.3%	56.3%	57.1%	66.3%
41	Manatee	62.5%	64.4%	67.9%	64.7%	76.2%
42	Marion	54.0%	58.3%	62.8%	69.8%	75.2%
43	Martin	70.0%	71.2%	75.5%	82.4%	84.9%
44	Monroe	65.7%	63.9%	71.2%	66.4%	68.6%
45	Nassau	59.5%	66.4%	76.4%	79.9%	89.0%
46	Okaloosa	81.6%	85.2%	86.2%	84.5%	83.3%
47	Okeechobee	54.8%	56.9%	58.5%	61.9%	58.9%
48	Orange	61.9%	67.4%	71.8%	71.4%	73.9%
49	Osceola	62.5%	71.9%	75.8%	76.1%	77.5%
50	Palm Beach	65.5%	70.1%	74.8%	74.3%	77.0%
51	Pasco	60.0%	62.2%	67.2%	71.0%	76.6%
52	Pinellas	59.0%	62.5%	64.8%	65.2%	72.0%
53	Polk	57.9%	61.3%	62.9%	66.4%	67.6%
54	Putnam	57.9%	56.4%	57.7%	63.2%	58.9%
55	St. Johns	79.6%	83.0%	83.9%	85.8%	86.0%
56	St. Lucie	59.2%	62.0%	63.7%	65.4%	70.6%
57	Santa Rosa	73.6%	72.8%	74.7%	77.8%	77.2%
58	Sarasota	67.6%	66.3%	71.4%	70.7%	78.0%
59	Seminole	72.0%	75.4%	77.8%	78.8%	80.3%
60	Sumter	68.1%	69.8%	73.6%	75.3%	77.7%
61	Suwannee	50.7%	52.7%	53.7%	54.4%	59.5%
62	Taylor	53.9%	59.0%	57.8%	61.1%	63.5%
63	Union	55.1%	63.8%	64.3%	73.7%	70.4%
64	Volusia	58.9%	58.7%	63.9%	62.0%	66.8%
65	Wakulla	60.5%	62.3%	65.9%	74.7%	70.4%
66	Walton	69.2%	72.1%	74.2%	74.2%	74.5%
67	Washington	68.9%	71.4%	75.1%	68.7%	71.1%
68	Deaf/Blind	48.1%	54.1%	54.3%	64.3%	36.9%
69	Wash. Special	1.7%	0.0%	0.0%	3.2%	0.0%
71	FL Virtual					#
72	FAU Lab Sch	100.0%	100.0%	100.0%	100.0%	100.0%
73	FSU Chtr Sch	91.5%	97.1%	97.2%	98.5%	98.5%
74	FAMU Lab Sch	65.9%	93.5%	94.6%	95.1%	81.8%
75	UF Lab Sch	94.3%	93.2%	95.7%	95.6%	94.8%
	<b>FLORIDA</b>	<b>62.7%</b>	<b>65.5%</b>	<b>69.0%</b>	<b>70.6%</b>	<b>74.5%</b>

\*Source: 2011-12 Florida Department of Education (FL DOE) cohort graduation data as of 10/16/12.

A pound sign (#) replaces data when the cohort is fewer than ten students. A blank cell indicates no students in the cohort.

**Table 9: Federal Graduation Rates by Race/Ethnicity, 2011-12\***

District	White	Black or African American	Hispanic/Latino	Asian	American Indian or Alaska Native	Two or More Races	Native Hawaiian or Other Pacific Islander	Total
01 Alachua	77.2%	54.8%	63.7%	95.8%	#	74.1%	NA	68.7%
02 Baker	75.2%	56.9%	#	#	#	#	NA	72.8%
03 Bay	76.0%	59.0%	73.1%	83.3%	70.0%	81.5%	NA	73.7%
04 Bradford	62.4%	63.6%	#	#	NA	#	NA	64.2%
05 Brevard	87.4%	76.3%	81.3%	89.3%	50.0%	84.2%	NA	85.2%
06 Broward	83.6%	68.2%	78.4%	89.5%	66.7%	80.4%	33.3%	76.4%
07 Calhoun	75.6%	87.5%	#	#	NA	#	NA	77.3%
08 Charlotte	80.4%	72.2%	71.1%	90.9%	#	83.8%	NA	79.2%
09 Citrus	77.5%	72.2%	79.2%	94.7%	#	88.1%	NA	78.0%
10 Clay	74.6%	61.6%	55.9%	75.9%	#	74.6%	NA	71.1%
11 Collier	83.9%	74.7%	70.5%	94.7%	#	87.7%	NA	78.4%
12 Columbia	68.4%	50.0%	70.0%	#	#	63.2%	NA	64.8%
13 Dade	85.1%	68.3%	76.9%	87.9%	75.0%	87.8%	NA	76.0%
14 DeSoto	69.2%	70.0%	63.2%	#	NA	#	NA	67.9%
15 Dixie	75.8%	#	NA	NA	NA	#	NA	77.1%
16 Duval	72.7%	62.3%	63.8%	80.6%	72.2%	73.6%	100.0%	67.7%
17 Escambia	67.5%	50.2%	65.6%	81.7%	77.3%	67.9%	NA	62.1%
18 Flagler	75.8%	64.8%	80.6%	89.3%	#	79.1%	NA	74.8%
19 Franklin	60.3%	#	#	NA	NA	#	NA	59.0%
20 Gadsden	25.0%	61.9%	73.3%	NA	NA	#	NA	61.4%
21 Gilchrist	88.2%	#	#	NA	#	#	NA	85.9%
22 Glades	68.8%	56.3%	66.7%	NA	#	NA	NA	64.8%
23 Gulf	81.8%	100.0%	#	#	NA	#	NA	84.7%
24 Hamilton	61.2%	52.1%	33.3%	#	NA	#	NA	55.0%
25 Hardee	62.7%	62.1%	64.6%	#	#	NA	NA	63.6%
26 Hendry	76.5%	69.3%	72.4%	#	#	#	NA	73.5%
27 Hernando	75.4%	62.0%	76.3%	84.6%	#	63.8%	NA	74.2%
28 Highlands	64.8%	53.0%	61.7%	71.4%	#	#	NA	62.1%
29 Hillsborough	81.1%	58.4%	68.1%	90.4%	72.5%	75.2%	100.0%	72.6%
30 Holmes	73.1%	#	#	NA	#	NA	NA	72.8%
31 Indian River	83.7%	65.9%	77.3%	100.0%	#	95.8%	NA	80.9%
32 Jackson	69.9%	64.7%	#	#	#	#	NA	69.2%
33 Jefferson	41.7%	42.6%	#	NA	NA	#	NA	42.6%
34 Lafayette	66.1%	#	70.0%	NA	NA	#	NA	65.8%
35 Lake	80.4%	68.1%	75.4%	90.5%	87.5%	86.0%	NA	78.2%
36 Lee	77.0%	57.0%	67.4%	90.5%	80.0%	78.7%	66.7%	71.9%
37 Leon	81.8%	55.8%	71.8%	87.5%	#	76.5%	NA	71.3%
38 Levy	73.8%	66.7%	60.0%	#	NA	73.3%	NA	72.2%
39 Liberty	66.7%	#	#	NA	NA	#	NA	64.2%
40 Madison	74.1%	59.8%	#	NA	NA	NA	NA	66.3%
41 Manatee	81.0%	64.7%	67.5%	78.6%	#	81.6%	NA	76.2%
42 Marion	79.1%	61.8%	72.1%	90.4%	66.7%	85.3%	100.0%	75.2%
43 Martin	89.5%	67.0%	71.7%	88.0%	NA	83.3%	NA	84.9%
44 Monroe	74.4%	57.1%	60.7%	#	NA	54.5%	NA	68.6%
45 Nassau	89.2%	83.1%	90.5%	#	#	100.0%	NA	89.0%
46 Okaloosa	85.1%	72.8%	77.8%	87.7%	60.0%	83.7%	NA	83.3%
47 Okeechobee	64.3%	29.8%	62.4%	#	10.0%	#	NA	58.9%
48 Orange	83.0%	62.2%	70.8%	91.3%	85.2%	78.7%	25.0%	73.9%
49 Osceola	83.8%	73.4%	73.8%	90.4%	70.0%	83.5%	0.0%	77.5%
50 Palm Beach	86.6%	64.8%	72.2%	91.6%	75.4%	84.5%	28.6%	77.0%
51 Pasco	76.5%	76.5%	73.7%	94.7%	76.5%	79.2%	100.0%	76.6%
52 Pinellas	77.3%	54.6%	60.2%	83.1%	61.3%	70.1%	100.0%	72.0%
53 Polk	71.6%	62.0%	61.5%	89.9%	50.0%	66.2%	100.0%	67.6%
54 Putnam	59.1%	60.3%	54.9%	#	NA	46.7%	NA	58.9%
55 St. Johns	88.5%	58.7%	80.8%	100.0%	#	85.7%	NA	86.0%
56 St. Lucie	75.2%	64.1%	69.1%	90.2%	55.6%	72.2%	NA	70.6%
57 Santa Rosa	77.4%	67.8%	79.0%	81.6%	78.6%	78.8%	NA	77.2%
58 Sarasota	80.8%	59.7%	73.1%	86.0%	#	77.7%	NA	78.0%
59 Seminole	84.0%	66.0%	75.3%	93.2%	#	83.8%	NA	80.3%
60 Sumter	80.1%	62.3%	75.0%	#	#	83.3%	100.0%	77.7%
61 Suwannee	62.4%	57.6%	61.3%	#	#	16.7%	NA	59.5%
62 Taylor	63.8%	59.1%	#	#	NA	#	NA	63.5%
63 Union	69.9%	65.4%	#	NA	NA	#	NA	70.4%
64 Volusia	70.6%	54.6%	57.9%	81.7%	54.5%	72.3%	100.0%	66.8%
65 Wakulla	68.9%	84.8%	#	NA	#	#	NA	70.4%
66 Walton	76.6%	57.1%	55.2%	#	#	#	100.0%	74.5%
67 Washington	73.8%	61.0%	NA	#	#	#	NA	71.1%
68 Deaf/Blind	44.4%	25.0%	44.4%	#	#	#	NA	36.9%
69 Wash. Special	#	#	NA	NA	NA	NA	NA	0.0%
71 FL Virtual	#	NA	NA	NA	NA	NA	NA	#
72 FAU Lab Sch	100.0%	#	#	#	NA	#	NA	100.0%
73 FSU Chtr Sch	97.4%	100.0%	100.0%	#	NA	#	NA	98.5%
74 FAMU Lab Sch	NA	81.8%	NA	NA	NA	NA	NA	81.8%
75 UF Lab Sch	100.0%	100.0%	86.7%	#	NA	#	NA	94.8%
<b>FLORIDA</b>	<b>79.4%</b>	<b>63.7%</b>	<b>72.9%</b>	<b>88.4%</b>	<b>69.7%</b>	<b>78.6%</b>	<b>62.5%</b>	<b>74.5%</b>

\*Source: 2011-12 Florida Department of Education (FL DOE) cohort graduation data as of 10/16/12.

A pound sign (#) replaces data when the cohort is fewer than ten students. A blank cell indicates no students in the cohort.

**Table 10: Graduates and Non-graduates by Category, 2011-12**

District	Adjusted Federal Cohort Total	% Graduating with Standard Diploma	% Special Diplomas	% Graduating with GED or GED-based Diplomas	% Other Non-graduates	% Dropping Out
01 Alachua	2,190	68.7%	2.5%	0.5%	22.4%	6.0%
02 Baker	356	72.8%	2.2%	0.8%	16.0%	8.1%
03 Bay	1,956	73.7%	1.5%	1.5%	20.1%	3.2%
04 Bradford	218	64.2%	4.1%	0.0%	20.6%	11.0%
05 Brevard	5,547	85.2%	1.3%	1.2%	10.6%	1.7%
06 Broward	19,074	76.4%	0.9%	0.2%	19.4%	3.1%
07 Calhoun	141	77.3%	2.8%	9.9%	4.3%	5.7%
08 Charlotte	1,377	79.2%	0.5%	0.9%	13.8%	5.6%
09 Citrus	1,212	78.0%	1.8%	1.0%	15.8%	3.5%
10 Clay	3,377	71.1%	1.0%	6.4%	18.5%	3.0%
11 Collier	2,922	78.4%	2.1%	0.6%	13.7%	5.2%
12 Columbia	693	64.8%	5.3%	1.3%	26.0%	2.6%
13 Dade	23,125	76.0%	0.5%	0.8%	15.7%	7.0%
14 DeSoto	277	67.9%	0.7%	1.1%	15.2%	15.2%
15 Dixie	109	77.1%	0.0%	0.0%	20.2%	2.8%
16 Duval	7,981	67.7%	2.0%	1.7%	23.0%	5.6%
17 Escambia	3,026	62.1%	2.6%	0.5%	29.6%	5.1%
18 Flagler	1,062	74.8%	1.3%	0.0%	17.6%	6.3%
19 Franklin	78	59.0%	0.0%	1.3%	28.2%	11.5%
20 Gadsden	355	61.4%	0.8%	0.6%	31.8%	5.4%
21 Gilchrist	185	85.9%	0.5%	0.5%	10.8%	2.2%
22 Glades	71	64.8%	2.8%	0.0%	25.4%	7.0%
23 Gulf	163	84.7%	0.0%	0.6%	14.1%	0.6%
24 Hamilton	111	55.0%	0.9%	2.7%	19.8%	21.6%
25 Hardee	316	63.6%	0.9%	1.3%	21.2%	13.0%
26 Hendry	479	73.5%	2.5%	3.3%	12.3%	8.4%
27 Hernando	1,638	74.2%	2.1%	5.0%	7.4%	11.4%
28 Highlands	897	62.1%	4.0%	1.0%	18.1%	14.8%
29 Hillsborough	14,247	72.6%	1.4%	1.4%	22.0%	2.7%
30 Holmes	224	72.8%	3.1%	1.8%	12.5%	9.8%
31 Indian River	1,204	80.9%	1.2%	1.1%	15.9%	0.9%
32 Jackson	493	69.2%	2.4%	0.6%	23.9%	3.9%
33 Jefferson	61	42.6%	6.6%	1.6%	36.1%	13.1%
34 Lafayette	79	65.8%	3.8%	0.0%	24.1%	6.3%
35 Lake	2,972	78.2%	1.6%	1.9%	11.7%	6.6%
36 Lee	5,715	71.9%	2.0%	0.1%	21.9%	4.1%
37 Leon	2,388	71.3%	1.5%	1.0%	21.6%	4.4%
38 Levy	371	72.2%	0.5%	0.0%	17.3%	10.0%
39 Liberty	95	64.2%	2.1%	3.2%	25.3%	5.3%
40 Madison	166	66.3%	2.4%	6.0%	15.7%	9.6%
41 Manatee	2,723	76.2%	2.9%	0.5%	15.0%	5.4%
42 Marion	3,107	75.2%	2.9%	3.7%	13.6%	4.6%
43 Martin	1,509	84.9%	1.7%	1.3%	9.9%	2.3%
44 Monroe	692	68.6%	1.7%	2.5%	22.1%	5.1%
45 Nassau	790	89.0%	1.1%	1.0%	7.3%	1.5%
46 Okaloosa	2,055	83.3%	1.0%	1.2%	12.6%	1.9%
47 Okeechobee	455	58.9%	2.0%	3.5%	16.9%	18.7%
48 Orange	12,946	73.9%	1.4%	0.2%	21.1%	3.5%
49 Osceola	3,690	77.5%	2.3%	0.0%	17.6%	2.6%
50 Palm Beach	13,074	77.0%	1.5%	1.1%	12.3%	8.1%
51 Pasco	4,510	76.6%	1.5%	4.3%	15.1%	2.5%
52 Pinellas	8,066	72.0%	0.8%	0.7%	22.9%	3.7%
53 Polk	6,303	67.6%	2.6%	1.4%	17.2%	11.2%
54 Putnam	740	58.9%	6.5%	4.2%	13.9%	16.5%
55 St. Johns	2,334	86.0%	1.6%	0.6%	8.3%	3.6%
56 St. Lucie	2,752	70.6%	1.2%	0.0%	22.9%	5.3%
57 Santa Rosa	1,967	77.2%	2.0%	0.4%	14.2%	6.2%
58 Sarasota	3,171	78.0%	1.6%	2.0%	13.6%	4.8%
59 Seminole	5,200	80.3%	0.8%	0.8%	16.8%	1.2%
60 Sumter	515	77.7%	2.1%	2.3%	9.1%	8.7%
61 Suwannee	422	59.5%	1.2%	0.2%	32.5%	6.6%
62 Taylor	189	63.5%	2.1%	0.5%	23.8%	10.1%
63 Union	169	70.4%	4.7%	0.0%	20.7%	4.1%
64 Volusia	4,828	66.8%	1.7%	0.0%	29.2%	2.3%
65 Wakulla	338	70.4%	1.2%	3.6%	16.3%	8.6%
66 Walton	475	74.5%	0.8%	0.4%	15.2%	9.1%
67 Washington	270	71.1%	1.5%	3.0%	17.0%	7.4%
68 Deaf/Blind	65	36.9%	49.2%	0.0%	13.8%	0.0%
69 Wash. Special	10	0.0%	0.0%	10.0%	90.0%	0.0%
71 FL Virtual	#					#
72 FAU Lab Sch	24	100.0%	0.0%	0.0%	0.0%	0.0%
73 FSU Chtr Sch	137	98.5%	0.0%	0.7%	0.7%	0.0%
74 FAMU Lab Sch	33	81.8%	0.0%	0.0%	18.2%	0.0%
75 UF Lab Sch	116	94.8%	0.0%	0.0%	5.2%	0.0%
<b>FLORIDA</b>	<b>190,627</b>	<b>74.5%</b>	<b>1.5%</b>	<b>1.1%</b>	<b>18.0%</b>	<b>4.9%</b>

\*Source: 2011-12 Florida Department of Education (FL DOE) cohort graduation data as of 10/16/12.

A pound sign (#) replaces data when the cohort is fewer than ten students. A blank cell indicates no students in the cohort.

**Table 11: 9<sup>th</sup>-12<sup>th</sup> Grade Single-Year Dropout Rates by Race/Ethnicity, 2011-12\***

District	White	Black or African American	Hispanic/Latino	Asian	American Indian/Alaska Native	Two or More Races	Pacific Islander
01 Alachua	1.6%	4.9%	2.1%	1.0%	7.7%	1.3%	#
02 Baker	1.4%	4.6%	3.6%	#	#	0.0%	#
03 Bay	1.0%	2.6%	0.9%	0.0%	0.0%	0.9%	#
04 Bradford	3.6%	3.1%	0.0%	#	#	0.0%	#
05 Brevard	0.5%	0.9%	0.8%	0.2%	0.0%	0.5%	0.0%
06 Broward	1.5%	2.9%	1.4%	0.5%	1.2%	1.7%	0.0%
07 Calhoun	2.2%	1.5%	0.0%	#	#	0.0%	#
08 Charlotte	2.8%	3.4%	3.5%	0.0%	0.0%	1.9%	#
09 Citrus	1.5%	1.2%	1.7%	0.0%	0.0%	0.6%	#
10 Clay	1.2%	1.2%	1.3%	0.3%	5.0%	1.3%	0.0%
11 Collier	1.7%	1.6%	3.1%	0.0%	3.2%	0.9%	0.0%
12 Columbia	0.5%	0.4%	0.0%	0.0%	0.0%	2.6%	#
13 Dade	1.9%	4.8%	2.0%	1.7%	1.9%	1.2%	3.9%
14 DeSoto	4.8%	2.7%	5.5%	9.1%	#	4.6%	#
15 Dixie	1.1%	0.0%	0.0%	#	#	0.0%	#
16 Duval	2.4%	3.6%	2.7%	1.4%	2.7%	2.4%	0.0%
17 Escambia	0.8%	2.3%	1.6%	0.3%	1.5%	1.2%	4.8%
18 Flagler	1.8%	2.3%	1.6%	0.0%	0.0%	1.7%	#
19 Franklin	3.8%	2.9%	#	#	#	10.0%	#
20 Gadsden	13.8%	3.1%	3.9%	#	#	10.0%	#
21 Gilchrist	1.1%	0.0%	3.9%	#	#	#	#
22 Glades	2.2%	1.1%	2.4%	#	#	#	#
23 Gulf	0.6%	0.0%	#	#	#	0.0%	#
24 Hamilton	2.1%	2.5%	9.3%	#	#	#	#
25 Hardee	2.9%	1.1%	6.0%	0.0%	#	#	#
26 Hendry	2.9%	2.5%	2.5%	0.0%	#	#	#
27 Hernando	2.9%	3.3%	2.1%	0.8%	0.0%	0.7%	#
28 Highlands	3.0%	5.8%	3.7%	1.8%	20.0%	2.3%	#
29 Hillsborough	0.7%	1.5%	0.9%	0.1%	1.0%	0.8%	0.0%
30 Holmes	2.6%	0.0%	0.0%	#	#	0.0%	#
31 Indian River	0.2%	1.1%	0.3%	0.0%	0.0%	0.8%	#
32 Jackson	1.1%	2.6%	0.0%	0.0%	0.0%	1.4%	#
33 Jefferson	1.6%	7.6%	0.0%	#	#	#	#
34 Lafayette	1.2%	3.0%	0.0%	#	#	#	#
35 Lake	1.9%	2.3%	2.1%	0.6%	2.3%	1.8%	#
36 Lee	1.2%	1.4%	1.4%	0.3%	1.7%	1.2%	0.0%
37 Leon	0.3%	2.0%	0.2%	0.0%	0.0%	0.0%	0.0%
38 Levy	1.3%	0.8%	0.7%	0.0%	#	0.0%	#
39 Liberty	1.0%	0.0%	0.0%	#	#	#	#
40 Madison	0.3%	0.5%	0.0%	#	#	#	#
41 Manatee	1.3%	3.4%	2.2%	0.4%	0.0%	1.0%	#
42 Marion	1.5%	3.6%	2.0%	0.0%	2.2%	0.8%	0.0%
43 Martin	0.4%	1.2%	1.5%	0.0%	0.0%	0.7%	#
44 Monroe	1.2%	2.0%	2.5%	0.0%	#	2.3%	#
45 Nassau	0.2%	0.0%	0.0%	0.0%	6.7%	0.0%	#
46 Okaloosa	1.4%	2.7%	1.6%	1.5%	0.0%	0.2%	0.0%
47 Okeechobee	4.1%	3.3%	4.4%	0.0%	21.6%	2.8%	#
48 Orange	0.9%	3.4%	1.7%	0.4%	0.8%	0.3%	3.3%
49 Osceola	1.1%	0.7%	1.2%	0.6%	0.0%	1.1%	0.0%
50 Palm Beach	1.6%	3.8%	2.6%	0.6%	3.4%	1.6%	10.8%
51 Pasco	1.1%	1.0%	0.8%	0.2%	4.5%	0.8%	0.0%
52 Pinellas	0.9%	2.5%	1.9%	0.1%	1.6%	1.5%	1.3%
53 Polk	5.2%	6.4%	4.8%	1.8%	6.0%	4.2%	3.3%
54 Putnam	3.4%	4.6%	5.7%	0.0%	0.0%	4.8%	#
55 St. Johns	0.7%	1.9%	1.3%	0.0%	0.0%	0.0%	0.0%
56 St. Lucie	1.6%	3.1%	1.8%	0.9%	1.7%	1.5%	0.0%
57 Santa Rosa	1.6%	2.4%	1.1%	1.4%	3.2%	2.5%	0.0%
58 Sarasota	1.8%	4.3%	3.1%	0.4%	0.0%	1.3%	7.7%
59 Seminole	0.3%	0.9%	0.4%	0.2%	0.0%	0.2%	0.0%
60 Sumter	1.9%	3.5%	2.9%	0.0%	#	3.5%	#
61 Suwannee	1.2%	1.6%	1.8%	0.0%	#	0.0%	#
62 Taylor	3.2%	4.3%	0.0%	#	#	0.0%	#
63 Union	0.6%	0.0%	2.7%	#	#	5.6%	#
64 Volusia	0.7%	0.9%	1.5%	0.5%	1.5%	0.8%	0.0%
65 Wakulla	1.6%	1.6%	0.0%	#	9.1%	6.0%	#
66 Walton	3.6%	2.5%	5.7%	0.0%	6.3%	1.3%	#
67 Washington	3.0%	2.6%	0.0%	#	#	0.0%	#
68 Deaf/Blind	0.0%	0.0%	0.0%	#	#	7.7%	#
69 Wash. Special	0.0%	0.0%	0.0%	#	#	#	#
71 FL VIRTUAL	3.3%	1.2%	5.9%	5.3%	#	8.7%	#
72 FAU	0.0%	0.0%	0.0%	0.0%	#	#	#
73 FSU	0.0%	0.0%	0.0%	0.0%	#	0.0%	#
74 FAMU		0.0%					
75 UF	0.0%	0.0%	0.0%	0.0%	#	0.0%	#
<b>FLORIDA</b>	<b>1.4%</b>	<b>3.1%</b>	<b>1.9%</b>	<b>0.6%</b>	<b>2.4%</b>	<b>1.3%</b>	<b>2.2%</b>

\*Source: 2011-12 Florida Department of Education (FL DOE) dropout data as of 10/16/12.

A pound sign (#) replaces data when the subgroup population is fewer than ten students. A blank cell indicates no students in the subgroup population.

**Table 12: 9<sup>th</sup>-12<sup>th</sup> Grade Single-Year Dropout Rates by District, 2007-08 through 2011-12**

	District	2007-08	2008-09	2009-10	2010-11	2011-12*
01	Alachua	3.6%	2.6%	2.2%	2.4%	2.8%
02	Baker	1.8%	2.0%	3.8%	2.5%	1.9%
03	Bay	1.7%	0.8%	1.4%	1.1%	1.2%
04	Bradford	5.0%	3.1%	5.1%	4.0%	3.3%
05	Brevard	0.7%	0.6%	0.5%	0.7%	0.6%
06	Broward	2.0%	2.1%	1.6%	1.3%	2.0%
07	Calhoun	1.5%	0.6%	2.2%	3.3%	2.1%
08	Charlotte	1.5%	2.8%	3.1%	2.4%	2.9%
09	Citrus	1.7%	1.4%	1.2%	1.2%	1.4%
10	Clay	2.0%	1.2%	1.3%	1.0%	1.2%
11	Collier	2.5%	2.2%	2.0%	1.9%	2.2%
12	Columbia	0.6%	0.7%	0.6%	0.6%	0.5%
13	Dade	4.5%	3.9%	4.0%	3.5%	2.7%
14	DeSoto	3.4%	4.6%	5.2%	2.2%	4.7%
15	Dixie	4.3%	5.1%	4.2%	1.6%	0.9%
16	Duval	3.3%	4.8%	2.2%	2.3%	2.9%
17	Escambia	4.0%	2.1%	1.6%	2.5%	1.4%
18	Flagler	1.0%	2.2%	1.8%	1.7%	1.8%
19	Franklin	2.0%	5.4%	0.3%	0.8%	4.1%
20	Gadsden	1.1%	4.2%	1.6%	2.7%	3.7%
21	Gilchrist	0.7%	0.2%	0.2%	0.2%	1.1%
22	Glades	5.0%	3.8%	1.4%	2.4%	2.2%
23	Gulf	1.3%	1.4%	0.3%	0.2%	0.5%
24	Hamilton	4.4%	3.6%	4.4%	2.7%	3.1%
25	Hardee	6.4%	4.9%	3.3%	2.5%	4.4%
26	Hendry	4.0%	3.1%	3.5%	3.0%	2.6%
27	Hernando	2.8%	2.7%	2.6%	3.1%	2.7%
28	Highlands	4.2%	4.2%	3.2%	7.2%	3.7%
29	Hillsborough	1.8%	1.0%	0.7%	0.8%	0.9%
30	Holmes	2.4%	1.7%	2.2%	2.8%	2.4%
31	Indian River	1.3%	1.5%	1.7%	0.3%	0.4%
32	Jackson	1.4%	2.0%	1.8%	1.2%	1.5%
33	Jefferson	5.3%	1.8%	7.8%	3.2%	6.0%
34	Lafayette	2.8%	0.7%	0.3%	1.6%	1.2%
35	Lake	3.1%	2.9%	3.0%	2.3%	2.0%
36	Lee	1.8%	1.3%	1.3%	1.9%	1.3%
37	Leon	2.1%	3.0%	0.8%	2.7%	0.9%
38	Levy	2.9%	4.2%	5.5%	2.3%	1.1%
39	Liberty	0.0%	1.3%	1.8%	0.5%	0.7%
40	Madison	5.1%	2.4%	3.1%	1.2%	0.4%
41	Manatee	4.4%	3.6%	4.3%	3.1%	1.8%
42	Marion	3.1%	2.6%	0.5%	0.9%	2.0%
43	Martin	0.5%	0.7%	0.6%	0.6%	0.6%
44	Monroe	0.6%	0.6%	1.1%	2.0%	1.7%
45	Nassau	3.5%	2.1%	1.3%	0.4%	0.2%
46	Okaloosa	1.7%	1.0%	0.4%	0.2%	1.5%
47	Okeechobee	5.2%	3.9%	4.6%	5.3%	4.5%
48	Orange	1.5%	1.1%	0.7%	1.2%	1.8%
49	Osceola	2.7%	1.0%	1.4%	1.6%	1.1%
50	Palm Beach	3.9%	2.6%	2.8%	2.6%	2.5%
51	Pasco	2.1%	1.2%	1.1%	1.0%	1.0%
52	Pinellas	2.1%	2.1%	2.4%	1.8%	1.3%
53	Polk	3.8%	4.0%	4.1%	4.2%	5.3%
54	Putnam	5.7%	3.3%	3.9%	2.7%	4.0%
55	St. Johns	1.3%	1.1%	0.9%	0.8%	0.8%
56	St. Lucie	1.3%	1.4%	2.3%	2.2%	2.1%
57	Santa Rosa	1.9%	1.8%	0.9%	1.0%	1.7%
58	Sarasota	2.1%	1.8%	2.0%	1.9%	2.2%
59	Seminole	0.5%	0.4%	0.4%	0.4%	0.4%
60	Sumter	1.8%	3.3%	2.0%	2.2%	2.3%
61	Suwannee	6.8%	3.4%	2.7%	1.3%	1.3%
62	Taylor	4.0%	2.8%	3.5%	4.3%	3.4%
63	Union	1.2%	1.0%	1.5%	2.0%	0.7%
64	Volusia	1.0%	1.3%	1.1%	1.2%	0.9%
65	Wakulla	2.7%	2.9%	3.4%	1.9%	1.8%
66	Walton	1.8%	2.6%	1.3%	2.2%	3.6%
67	Washington	1.7%	1.2%	1.6%	2.5%	2.8%
68	Deaf/Blind	0.0%	0.0%	0.0%	0.0%	0.3%
69	Wash. Special	1.3%	1.4%	0.0%	0.3%	0.0%
71	FL VIRTUAL					3.9%
72	FAU	0.0%	0.0%	0.0%	0.0%	0.0%
73	FSU	0.0%	0.0%	0.0%	0.0%	0.0%
74	FAMU	0.0%	0.0%	0.0%	0.0%	0.0%
75	UF	0.0%	0.2%	0.0%	0.0%	0.0%
	<b>FLORIDA</b>	<b>2.6%</b>	<b>2.3%</b>	<b>2.0%</b>	<b>1.9%</b>	<b>1.9%</b>

\*Source: 2011-12 Florida Department of Education (FL DOE) Automatic Student Database as of 10/16/12.



## **Frequently Asked Questions about the Federal Cohort Graduation Rate**

Please refer to *High School Graduation Rate: Non-Regulatory Guidance*, a U.S. Department of Education resource, at <http://www2.ed.gov/policy/elsec/guid/hsgrguidance.pdf> for answers to frequently asked questions regarding the new federal high school graduation rate calculation.