

**THE SCHOOL BOARD OF BROWARD COUNTY, FLORIDA  
OFFICE OF THE SUPERINTENDENT**

**ROBERT W. RUNCIE  
SUPERINTENDENT OF SCHOOLS**

*Signatures on File*

December 19, 2014

TO: School Board Members

FROM: Maurice L. Woods  
Chief Strategy & Operations Officer

VIA: Robert W. Runcie  
Superintendent of Schools

SUBJECT: **HIGH SCHOOL GRADUATION RATES, 2013-14**

On December 18, 2014, the Florida Department of Education (FDOE) released Federal graduation rates for Florida and the 67 individual Florida school districts. State and district data are located online at the FDOE Education Information & Accountability Services Website (<http://www.fldoe.org/accountability/data-sys/edu-info-accountability-services/pk-12-public-school-data-pubs-reports/students.stml>).

- Florida’s Federal graduation rate was 76.1% in 2013-14, which is an increase from 75.6% in 2012-13.
- Broward County Public Schools’ (BCPS) Federal graduation rate was 74.2% in 2013-14, which is a decrease from 75.3% in 2012-13.
- BCPS traditional high schools achieved a graduation rate of 88.7% in 2013-14, which is similar to 89.1% in 2012-13.
- 16 traditional high schools had a graduation rate higher than 90% or more, which is the same number of traditional high schools in 2012-13.
- One school, Hollywood Hills High School, increased its graduation rate by 12 percentage points improving to 88.1% in 2013-14 from 76.4% in 2012-13.

Table 1 shows the graduation rates for the major race/ethnicity groups served in BCPS. The gap between Black and White students increased by 2.7 percentage points and the gap between Hispanic and White students increased by 0.8 percentage points.

Table 1  
*Graduation Rates and Gaps by Major Race/Ethnicity Groups, 2012-13 and 2013-14*

	2012-13		2013-14		Change in Graduation Rate Gap 2012-13 to 2013-14
	Graduation Rate	Gap	Graduation Rate	Gap	
White, Non-Hispanic	83.0	--	83.4	--	--
Black, Non-Hispanic	66.2	16.8	63.9	19.5	2.7
Hispanic	78.3	4.7	77.9	5.5	0.8

# HIGH SCHOOL GRADUATION RATES, 2013-14

December 18, 2014

Page 2

For a historical perspective, Figure 2 illustrates the graduation rates for BCPS traditional high schools, BCPS including all sites, and Florida for the past four years. BCPS traditional schools achieved graduation rates consistently higher than the state. Overall, BCPS has registered higher graduation rates than the state; however, in 2013-14 the BCPS and Florida graduation rates diverged by almost two percentage points.

Figure 2. Historical Trends In Graduation Rates

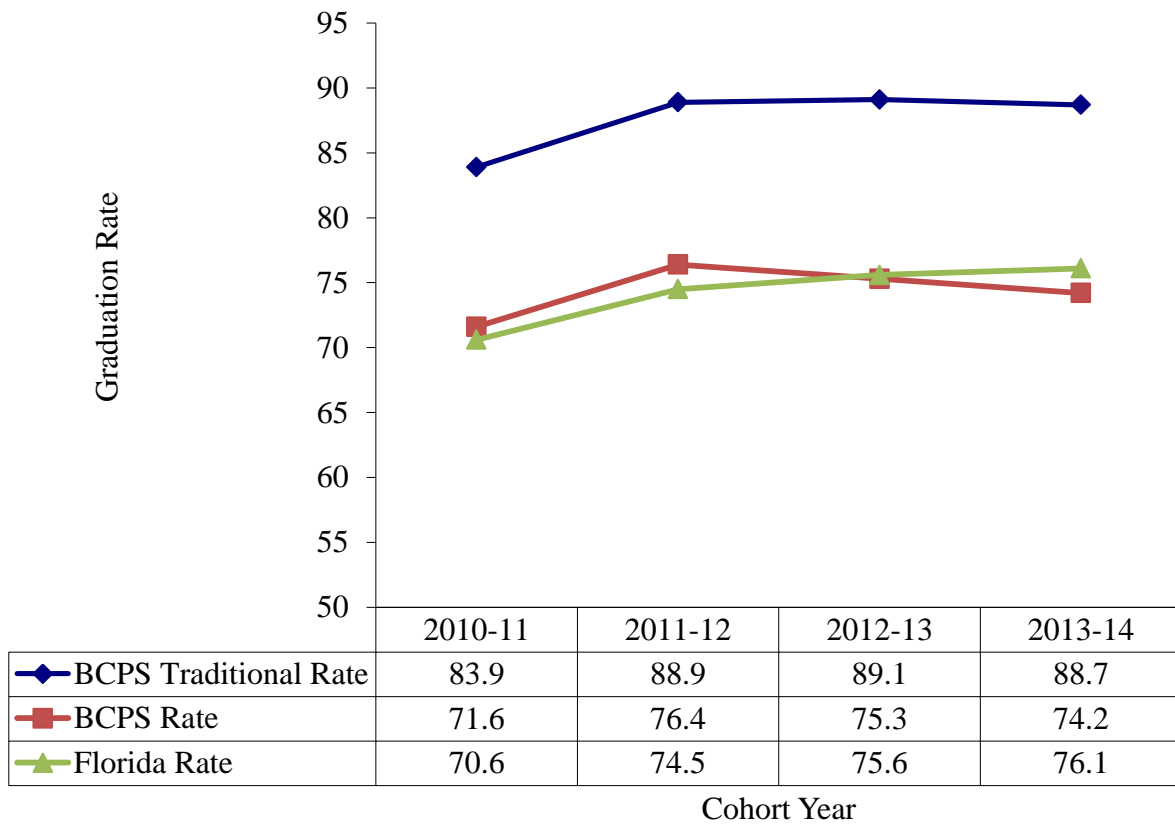


Table 2 displays the historical graduation rates for Florida’s five largest districts and the state overall. In 2013-14, three of the big-five districts (Miami-Dade, Orange, and Palm Beach) had higher graduation rates than did Broward. Only Palm Beach County and the state increased graduation rates.

Table 2

*Comparison of BCPS Federal Graduation Rates with Other Large Florida School Districts, 2007-08 through 2013-14*

	2007-08	2008-09	2009-10	2010-11	2011-12	2012-13	2013-14	Change 2012-13 to 2013-14
<b>Broward</b>	<b>64.3</b>	<b>68.4</b>	<b>72.4</b>	<b>71.6</b>	<b>76.4</b>	<b>75.3</b>	<b>74.2</b>	<b>-1.1</b>
Hillsborough	63.9	66.1	66.7	69.3	72.6	74.1	73.5	-0.6
Miami-Dade	60.5	62.0	68.3	71.3	76.0	77.2	76.6	-0.6
Orange	61.9	67.4	71.8	71.4	73.9	75.9	74.6	-1.3
Palm Beach	65.5	70.1	74.8	74.3	77.0	76.3	77.9	1.6
Florida	62.7	65.5	69.0	70.6	74.5	75.6	76.1	0.5

## HIGH SCHOOL GRADUATION RATES, 2013-14

December 18, 2014

Page 3

Appendix A shows the three-year graduation rates for Broward schools in 2011-12, 2012-13, and 2013-14.

**Review of Appendix A shows that 16 traditional high schools had a graduation rate higher than 90% or more.**

The Florida Department of Education issued data for each school, (<http://www.fldoe.org/accountability/data-sys/edu-info-accountability-services/pk-12-public-school-data-pubs-reports/students.stml>). The Appendix provides the three-year graduation rate summary for each of Broward's high schools. **If you have any questions regarding this release, please contact Research Specialist Dr. Russell Clement, Student Assessment & Research at (754) 321-2515 or Director Richard Baum, Student Assessment & Research at (754) 321-2518.** This memorandum and a school-by-school report can be accessed on the Student Assessment & Research Website at <http://www.broward.k12.fl.us/sar/Releases.htm>.

RWR/MLW/NB/RGB/RWC/ALA:rs

cc: Senior Leadership Team  
Directors, School Performance & Accountability  
High School Principals  
Russell Clement, Research Specialist, Student Assessment & Research

### References

Florida Department of Education. (2014). *Florida's Federal High School Graduation Rates, 2013-14*. Tallahassee, FL: Florida Department of Education. Retrieved December 18, 2014, from [http://www.fldoe.org/core/fileparse.php/7584/urlt/GraduationRates\\_2013-14.doc](http://www.fldoe.org/core/fileparse.php/7584/urlt/GraduationRates_2013-14.doc).

**HIGH SCHOOL GRADUATION RATES, 2013-14**

December 18, 2014

Page 4

## APPENDIX A

*High School Graduation Rates 2011-12 Through 2013-14*

	Graduation Rates			Change in
	2011-12	2012-13	2013-14	Graduation Rate 2011-12 to 2013-14
District Total	76	75	74	-2
District Traditional High Schools				
Anderson, Boyd H. High	78	84	80	2
Atlantic Technical High School	97	98	99	2
Broward Virtual Education	85	92	92	7
Coconut Creek High	76	69	63	-13
College Academy @ BCC Central	100	100	100	0
Cooper City High	95	95	91	-4
Coral Glades High	84	85	87	3
Coral Springs High	87	90	88	1
Cypress Bay High	97	95	95	-2
Deerfield Beach High	79	86	83	4
Dillard 6-12	91	91	86	-5
Ely, Blanche High	87	84	90	3
Everglades High	87	88	86	-1
Flanagan, Charles W. High	94	92	91	-3
Fort Lauderdale High	85	92	91	6
Hallandale High	90	89	86	-4
Hollywood Hills High	78	76	88	10
McArthur High	90	89	88	-2
McFatter, William Technical High	98	95	99	1
Miramar High	90	90	87	-3
Monarch High	88	88	87	-1
Northeast High	93	92	85	-8
Nova High	95	94	94	-1
Piper High	82	85	82	0
Plantation High	89	85	89	0
Pompano Beach Instit. of Int'l. Studies	100	99	100	0
South Broward High	84	81	80	-4
South Plantation High	78	87	88	10
Stoneman Douglas, M. High	95	94	94	-1
Stranahan High	84	87	90	6
Taravella, J. P. High	88	88	90	2
West Broward High	96	96	92	-4
Western High	90	89	90	0

**HIGH SCHOOL GRADUATION RATES, 2013-14**

December 18, 2014

Page 5

*High School Graduation Rates 2011-12 Through 2013-14 (Continued)*

	Graduation Rates			Change in
	2011-12	2012-13	2013-14	Graduation Rate 2011-12 to 2013-14
District Total	76	75	74	-2
<b>Center Schools</b>				
Bright Horizons School	*	0	0	--
Cross Creek School	17	27	39	22
Cypress Run Education Center	0	*	*	--
Dave Thomas Education Center	8	12	10	2
Hallandale Adult & Community Center	2	2	6	4
Lanier-James Education Center	14	11	0	-14
Off Campus Learning Centers	1	2	2	1
Pine Ridge Education Center	7	8	7	0
Quest Center, The	0	*	0	0
Seagull School	11	14	14	3
Sheridan Technical Center	*	0	*	--
Sunset School	12	31	*	--
Whiddon-Rogers Education Center	13	16	15	2
Whispering Pines School	4	16	18	14
Wingate Oaks Center	0	*	*	--
<b>Charter High Schools</b>				
Academic Solutions Academy High	--	--	8	--
Ben Gamla Charter High	--	--	88	--
College Bound Academy of Excellence	--	--	*	--
Coral Springs Charter School High	97	98	99	2
Dolphin Park High Charter	8	9	9	1
Eagle Academy	47		*	--
Flagler High	--	--	7	--
iGeneration Empowerment Academy	--	--	*	--
International School Broward High	46	63	94	48
Lauderhill High Charter	11	11	4	-7
Maverick's High - Central Broward	11	7	9	-2
Maverick's High - North Broward	9	11	5	-4
Melrose High	--	--	4	--
North University High Charter	20	9	7	-13
Parkway Academy	68	--	0	-68
Pembroke Pines Charter School - High	96	99	93	-3
Pivot Charter	--	--	42	--
Somerset Prep. Charter High @ N. Lauderdale	--	*	76	--
Somerset Academy High Miramar	92	76	79	-13

# HIGH SCHOOL GRADUATION RATES, 2013-14

December 18, 2014

Page 6

*High School Graduation Rates 2011-12 Through 2013-14 (Continued)*

	Graduation Rates			Change in
	2011-12	2012-13	2013-14	Graduation Rate
				2011-12 to 2013-14
District Total	76	75	74	-2
Somerset Academy High	95	96	95	0
Somerset Conservatory High	100	100	100	0
Success Leadership Academy	8	2	0	-8
SunEd High	--	1	8	--

Note. "\*" indicates that graduation data were removed for schools with less than 10 students in the cohort. "--" indicates no graduation data exists.