

**THE SCHOOL BOARD OF BROWARD COUNTY, FLORIDA  
OFFICE OF THE SUPERINTENDENT**

**ROBERT W. RUNCIE  
SUPERINTENDENT OF SCHOOLS**

[SIGNATURES ON FILE](#)

December 11, 2013

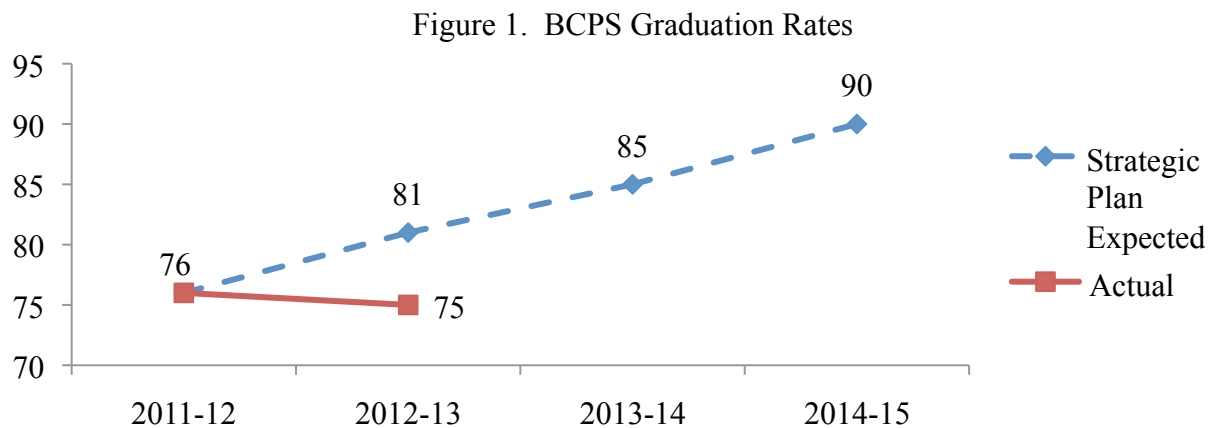
TO: School Board Members  
FROM: Maurice L. Woods  
Chief Strategy & Operations Officer  
VIA: Robert W. Runcie  
Superintendent of Schools

**SUBJECT: HIGH SCHOOL GRADUATION RATES AND DROPOUT RATES, 2012-13**

Today, the Florida Department of Education (FDOE) released federal graduation and dropout rates for Florida and the 67 individual Florida school districts. State and district data are located online at the FDOE Education Information & Accountability Services Website (<http://www.fldoe.org/eias/eiaspubs/pubstudent.asp>).<sup>1</sup>

- Broward County Public Schools' (BCPS) graduation rate was 75.3%
- Florida's graduation rate was 75.6%
- BCPS' dropout rate was 2.1%
- Florida's dropout rate was 2.0%

The Broward County Public Schools Strategic Plan calls for the four-year graduation rate to reach 90% by 2015. Figure 1 shows that the overall BCPS graduation rate was stable from 2011-12 to 2012-13 and was below the Strategic Plan expected graduation rate of 81% for 2012-13.



<sup>1</sup> Graduation and drop-out rates are calculated independently. While graduation rates are determined by a four-year cohort of students, dropout rates are determined based on a single year's enrollment in grades 9-12.

# HIGH SCHOOL GRADUATION RATES AND DROPOUT RATES, 2012-13

December 11, 2013

Page 2

The Strategic Plan also specifies that the gaps in achievement between groups will be reduced or eliminated. Table 1 shows the graduation rates for the major ethnic groups served in BCPS. The gap between Black and White students increased by 1.4 points and the gap between Hispanic and White students decreased by 0.5 points.

Table 1

*Graduation Rates and Gaps by Major Demographic Group, 2011-12 and 2012-13*

	2011-12		2012-13		Change
	Graduation		Graduation		
	Rate	Gap	Rate	Gap	
White, Non-Hispanic	83.6	--	83.0	--	--
Black, Non-Hispanic	68.2	15.4	66.2	16.8	1.4
Hispanic	78.4	5.2	78.3	4.7	-0.5

For a historical perspective, Figure 2 illustrates the graduations rates for BCPS and Florida for the past seven years. Historically, BCPS has registered higher graduation rates than the state overall; in 2012-13 the BCPS and Florida graduation rates were nearly identical.

Figure 2. Historical Trends in Graduation Rates

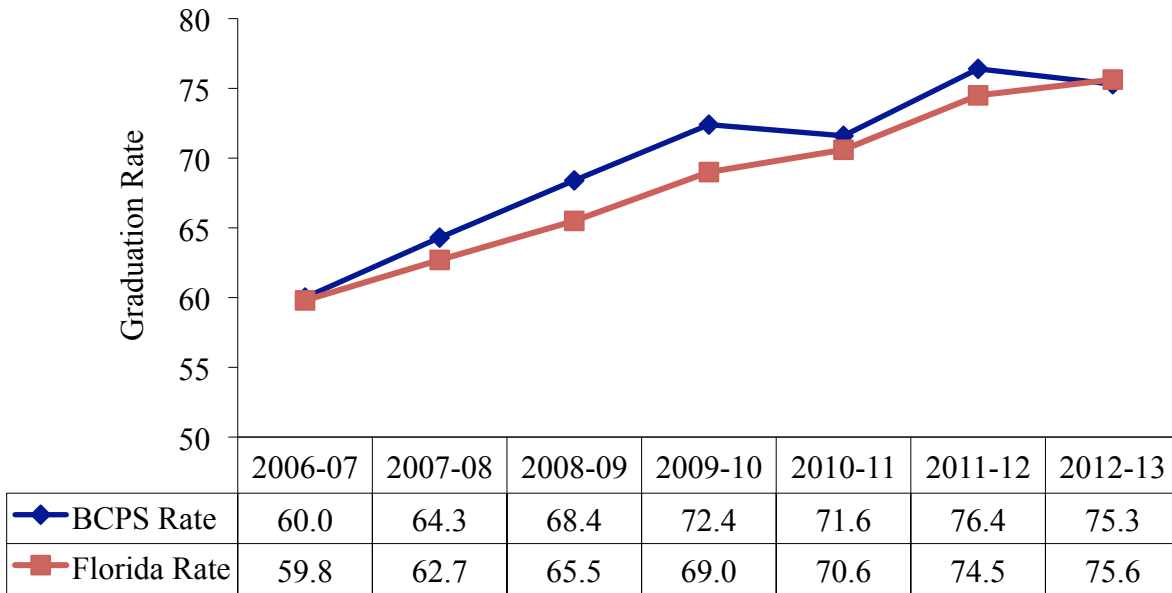


Table 2 displays the historical graduation rates for Florida’s five largest districts and the state overall. In 2012-13, three of the big-five districts (Miami-Dade, Orange, and Palm Beach) had higher graduation rates than did Broward. Three districts (Hillsborough, Miami-Dade, and Orange) tended to increase graduation rates as did Florida overall.

# HIGH SCHOOL GRADUATION RATES AND DROPOUT RATES, 2012-13

December 11, 2013

Page 3

Table 2

*Comparison of BCPS Federal Graduation Rates with Other Large Florida School Districts, 2006-07 through 2012-13*

	2006-07	2007-08	2008-09	2009-10	2010-11	2011-12	2012-13	Change 2011-12 to 2012-13
<b>Broward</b>	<b>60.0</b>	<b>64.3</b>	<b>68.4</b>	<b>72.4</b>	<b>71.6</b>	<b>76.4</b>	<b>75.3</b>	<b>-1.1</b>
Hillsborough	62.1	63.9	66.1	66.7	69.3	72.6	74.1	1.5
Miami-Dade	58.7	60.5	62.0	68.3	71.3	76.0	77.2	1.2
Orange	57.1	61.9	67.4	71.8	71.4	73.9	75.9	2.0
Palm Beach	61.8	65.5	70.1	74.8	74.3	77.0	76.3	-0.7
Florida	59.8	62.7	65.5	69.0	70.6	74.5	75.6	1.1

Two summary appendices (Appendix A and B) are attached. Appendix A shows the graduation rates for Broward schools in 2011-12 and 2012-13. Appendix B shows a comparison of school dropout rates from 2009-10 through 2012-13.

**Review of Appendix A shows that 7 of the 33 (21%) traditional District high schools met or exceeded their Strategic Plan goals.** An additional 12 traditional high schools met the District-wide Strategic Plan goal of 90% or more. In total, 18 (55%) traditional District high schools registered graduation rates in alignment with Strategic Plan expectations.

This memorandum may be accessed via the Research Services Web site (<http://www.broward.k12.fl.us/sar/Releases.htm>). If you have any comments concerning this memorandum, please contact **Director Richard Baum or Research Specialist Russell Clement, Ph.D., with Student Assessment and Research at 754-321-2500.**

RWR/MLW/NB/RGB:rwc

Attachments

cc: Senior Leadership Team  
Sharon Airaghi, Chief Service Quality Officer  
Directors, School Performance & Accountability  
Jodi Perry, Director, Charter Schools Support  
Principals  
Jodi Klein, Chairperson, District Advisory Council  
Maxine Lewers, President, Broward County Council of PTA

## References

Florida Department of Education. (2013). *Florida's Federal High School Graduation Rates and Dropout Rates, 2012-13*. Tallahassee, FL: Florida Department of Education. Retrieved December 5, 2013, from [http://www.fldoe.org/eias/eiaspubs/word/FedGradRate\\_1213.doc](http://www.fldoe.org/eias/eiaspubs/word/FedGradRate_1213.doc)

**HIGH SCHOOL GRADUATION RATES AND DROPOUT RATES, 2012-13**

December 11, 2013

Page 4

## APPENDIX A

*High School Graduation Rates 2011-12, 2012-13*

School	Actual Graduation Rate		Strategic Plan Expectation	Strategic Plan Status
	2011-12	2012-13	2012-13	
District Total	76	75	81	Not Met
District High Schools				
Anderson, Boyd H. High	78	84	83	School Goal Met
Atlantic Technical High School	97	98	99	District Goal Met
Broward Virtual Education	85	92	91	School Goal Met
Coconut Creek High	76	69	81	Not Met
College Academy @ BCC Central	100	100	100	School Goal Met
Cooper City High	95	95	97	District Goal Met
Coral Glades High	84	85	87	Not Met
Coral Springs High	87	90	90	School Goal Met
Cypress Bay High	97	95	98	District Goal Met
Deerfield Beach High	79	86	83	School Goal Met
Dillard High	91	91	94	District Goal Met
Ely, Blanche High	87	84	90	Not Met
Everglades High	87	88	90	Not Met
Flanagan, Charles W. High	94	92	96	District Goal Met
Fort Lauderdale High	85	92	89	School Goal Met
Hallandale High	90	89	94	Not Met
Hollywood Hills High	78	76	82	Not Met
McArthur High	90	89	93	Not Met
McFatter, William Technical High	98	95	100	District Goal Met
Miramar High	90	90	93	District Goal Met
Monarch High	88	88	94	Not Met
Northeast High	93	92	95	District Goal Met
Nova High	95	94	97	District Goal Met
Piper High	82	85	86	Not Met
Plantation High	89	85	92	Not Met
Pompano Beach Instit. of Int'l. Studies	100	99	100	District Goal Met
South Broward High	84	81	88	Not Met
South Plantation High	78	87	87	School Goal Met
Stoneman Douglas, M. High	95	94	99	District Goal Met
Stranahan High	84	87	88	Not Met
Taravella, J. P. High	88	88	94	Not Met
West Broward High	96	96	100	District Goal Met
Western High	90	89	92	Not Met

# HIGH SCHOOL GRADUATION RATES AND DROPOUT RATES, 2012-13

December 11, 2013

Page 5

## High School Graduation Rates 2011-12, 2012-13 (Continued)

School	Actual Graduation Rate		Strategic Plan Expectation	Strategic Plan Status
	2011-12	2012-13	2012-13	
Center Schools				
Bright Horizons School	--	0	--	--
Cross Creek School	17	27	30	Not Met
Cypress Run Education Center	0	*	--	--
Dave Thomas Education Center	8	12	10	School Goal Met
Hallandale Adult & Community Center	2	2	7	Not Met
Lanier-James Education Center	14	11	26	Not Met
Off Campus Learning Centers	1	2	--	--
Pine Ridge Education Center	7	8	32	Not Met
Quest Center, The	0	*	--	--
Seagull School	11	14	15	Not Met
Sheridan Technical Center	--	0	--	--
Sunset School	12	31	40	Not Met
Whiddon-Rogers Education Center	13	16	14	School Goal Met
Whispering Pines School	4	16	25	Not Met
Wingate Oaks Center	0	*	--	--
Charter High Schools				
Coral Springs Charter School High	97	98	99	District Goal Met
Dolphin Park High Charter	8	9	12	Not Met
Eagle Academy	47	*	--	--
International School Broward High	46	63	96	Not Met
Lauderhill High Charter	11	11	14	Not Met
Life Skills High	8	2	10	Not Met
Maverick's High - Central Broward	11	7	20	Not Met
Maverick's High - North Broward	9	11	13	Not Met
North University High Charter	20	9	24	Not Met
Pembroke Pines Charter School - High	96	99	100	District Goal Met
Somerset Academy High	95	96	98	District Goal Met
Somerset Academy High Miramar	92	76	99	Not Met
Somerset Conservatory High	100	100	100	School Goal Met
SunEd High	--	1	--	--

Note. '--' or '\*' indicates that graduation data were removed for schools with less than 10 students in the cohort.

# HIGH SCHOOL GRADUATION RATES AND DROPOUT RATES, 2012-13

December 11, 2013

Page 6

## APPENDIX B

### *Comparison of Dropout Rates by School, 2009-10 through 2012-13*

School	Dropout	Dropout	Dropout	Dropout	Change in Dropout Rate 2011-12 to 2012- 13
	Rate 2009-10 %	Rate 2010-11 %	Rate 2011-12 %	Rate 2012-13 %	
District High Schools					
Anderson, Boyd H. High	2.5	1.1	1.9	0.2	-1.7
Atlantic Technical High School	0.0	0.0	0.0	0.0	0.0
Broward Virtual Education	0.3	1.1	0.7	0.8	0.1
Coconut Creek High	0.1	0.0	0.2	0.8	0.6
College Academy @ BCC	0.0	0.0	0.0	0.0	0.0
Cooper City High	0.0	0.1	0.3	0.2	-0.1
Coral Glades High	0.1	0.0	0.2	0.4	0.2
Coral Springs High	0.6	0.2	0.5	0.5	0.0
Cypress Bay High	0.1	0.0	0.0	0.0	0.0
Deerfield Beach High	1.0	0.5	0.2	0.2	0.0
Dillard High	0.2	0.0	0.3	0.0	-0.3
Ely, Blanche High	1.5	0.6	0.3	0.2	-0.1
Everglades High	1.0	0.5	0.0	0.6	0.6
Flanagan, Charles W. High	0.0	0.0	0.0	0.3	0.3
Fort Lauderdale High	0.3	0.4	0.0	0.0	0.0
Hallandale High	0.4	0.1	0.1	1.0	0.9
Hollywood Hills High	0.1	0.1	0.0	0.3	0.3
McArthur High	0.4	0.2	0.4	0.1	-0.3
McFatter, William T. High	0.2	0.5	0.2	0.0	-0.2
Miramar High	0.2	0.1	0.3	0.1	-0.2
Monarch High	0.4	0.0	0.0	0.2	0.2
Northeast High	0.7	0.0	0.0	0.0	0.0
Nova High	0.6	0.0	0.2	0.1	-0.1
Piper High	1.6	1.1	0.5	0.6	0.1
Plantation High	0.1	1.0	0.7	0.9	0.2
Pompano Beach Instit. of Int'l. Studies	0.0	0.0	0.0	0.0	0.0
South Broward High	0.2	0.1	0.0	0.0	0.0
South Plantation High	1.1	2.2	0.5	1.3	0.8
Stoneman Douglas, M. High	0.0	0.1	0.0	0.1	0.1
Stranahan High	0.5	0.2	0.6	0.5	-0.1
Taravella, J. P. High	0.1	0.1	0.0	0.0	0.0
West Broward High	0.1	0.0	0.2	0.1	-0.1
Western High	0.2	0.4	1.7	0.0	-1.7

# HIGH SCHOOL GRADUATION RATES AND DROPOUT RATES, 2012-13

December 11, 2013

Page 7

## *Comparison of Dropout Rates by School, 2009-10 through 2012-13 (Continued)*

School	Dropout Rate 2009-10 %	Dropout Rate 2010-11 %	Dropout Rate 2011-12 %	Dropout Rate 2012-13 %	Change in Dropout Rate 2011-12 to 2012-13
Center Schools					
Bright Horizons School	4.7	0.0	0.0	2.5	2.5
Cross Creek School	7.5	5.4	14.1	6.7	-7.4
Cypress Run Education Center	8.4	7.2	2.2	7.7	5.5
Dave Thomas Education Center	16.2	14.4	16.1	5.5	-10.6
Hallandale Adult & Community Center	15.3	5.0	19.9	12.7	-7.2
Lanier-James Education Center	6.7	13.3	8.9	7.2	-1.7
Off Campus Learning Centers	13.0	2.3	34.1	22.3	-11.8
Pine Ridge Education Center	0.0	2.4	1.9	4.4	2.5
Quest Center, The	5.0	1.4	0.0	3.6	3.6
Seagull School	22.8	34.5	25.1	14.4	-10.7
Sheridan Technical Center	5.1	8.2	0.0	7.5	7.5
Sunset School	3.5	10.8	6.2	1.5	-4.7
Whiddon-Rogers Education Center	7.8	4.1	25.1	23.6	-1.5
Whispering Pines School	6.4	12.0	7.3	4.2	-3.1
Wingate Oaks Center	0.0	5.0	1.8	0.0	-1.8
Charter Schools					
Ben Gamla Charter High School	--	--	4.0	5.0	1.0
Coral Springs Charter School High	0.1	0.0	0.2	0.0	-0.2
Dolphin Park High Charter	7.8	2.3	0.1	0.0	-0.1
Eagle Academy	0.0	0.4	0.4	53.3	52.9
International School of Broward	0.8	11.7	1.1	7.4	6.3
Lauderhill High Charter	3.3	0.0	0.0	0.4	0.4
Life Skills High	24.4	33.7	16.3	10.2	-6.1
Mavericks High Of Central Broward County	--	--	1.5	48.4	46.9
Mavericks High Of North Broward County	--	--	1.2	14.0	12.8
North University High Charter	0.6	0.5	0.2	8.9	8.7
Parkway Academy - High	0.5	0.8	0.8	--	--
Pembroke Pines Charter School - High	0.0	0.0	0.0	0.1	0.1
Somerset Academy Charter High School Miramar Campus	--	--	1.3	0.0	-1.3
Somerset Academy High	0.2	1.0	0.3	0.0	-0.3
Somerset Conservatory High	0.0	0.0	0.0	0.0	0.0
Somerset Preparatory Academy					
Charter High At North Lauderdale	--	--	0.8	3.9	3.1
SunEd High School	--	--	--	15.2	--

**HIGH SCHOOL GRADUATION RATES AND DROPOUT RATES, 2012-13**

December 11, 2013

Page 8

*Comparison of Dropout Rates by School, 2009-10 through 2012-13 (Continued)*

School	Dropout Rate 2009-10 %	Dropout Rate 2010-11 %	Dropout Rate 2011-12 %	Dropout Rate 2012-13 %	Change in Dropout Rate 2011-12 to 2012-13
DJJ Sites					
Broward Detention Center	6.3	19.0	10.8	13.3	2.5
Broward Youth Treatment Center	--	--	--	0	--
Thompson Academy	0.0	3.6	1.3	0.0	-1.3
South Pines Academy	*	*	--	--	--
Broward Girls Academy	3.0	2.0	3.6	2.2	-1.4
Pompano Substance Abuse	0.0	2.1	0.0	4.5	4.5
AMI kids of Greater Fort Laud.	11.0	20.0	6.9	4.3	-2.6
PACE	9.8	5.6	11.6	2.4	-9.2

Note. '--' or '\*' indicates that dropout data were removed for schools with less than 10 students in the cohort.